

## User Manual

➤ **Details to be provided by Members for connecting Online trade file application with BSE Trading System:-**

Trading member/ Clearing member to provide following details on email :- bsehelp@bseindia.com

Trading member code : For example 9018

Trading member type : For example TM/ CM/ PCM / TCM (For Equity Segment value to be provided as TM)

IP address of machine connected to BSE Exchange : For example IP address in range of 10.xxx.xxx.xxx

Segment : Equity/ Derivatives /Currency Derivatives

Exchange will map the details and provide confirmation to Trading members / Clearing members.

➤ **Installation Steps of Online Trade file application**

PREREQUISITES:-

.Net Frame Work 4.0.

Lease Line connectivity on the machine

STEPS:-

Download the Online trade file application available on following link :-

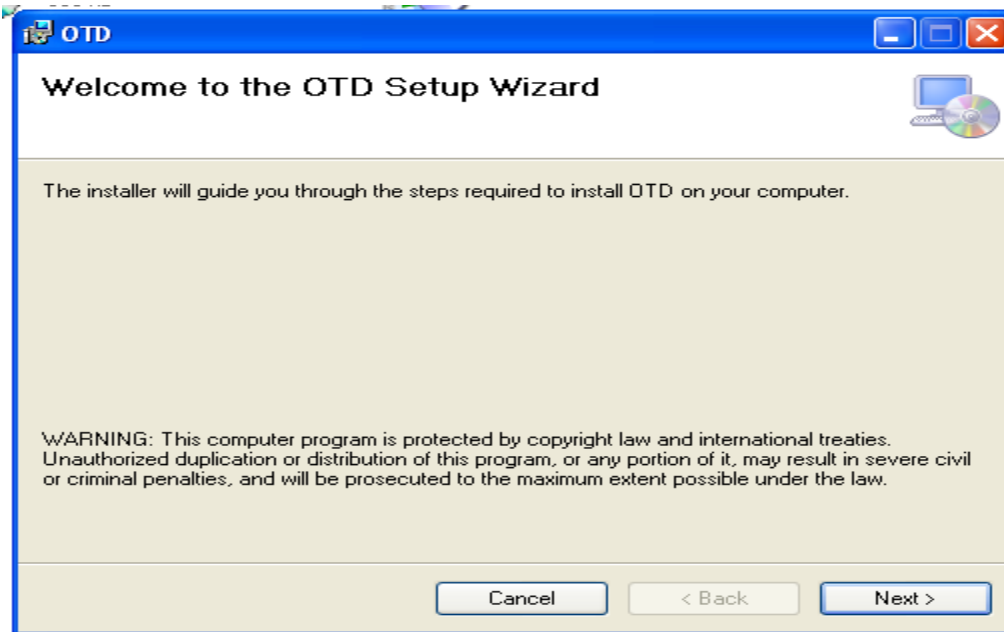
Double click on set up.exe (otd->otd->release->setup)

Click on next button during the installation process

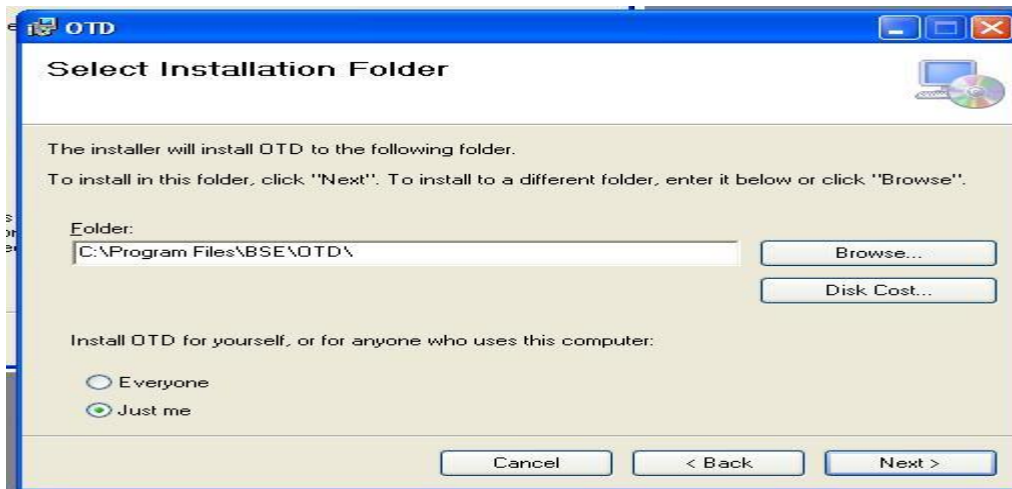
Exe will be installed on default path c:\program files\bse\otd\otd.exe or provided path during installation\

On clicking upon "Release" folder, setup.exe would be seen.

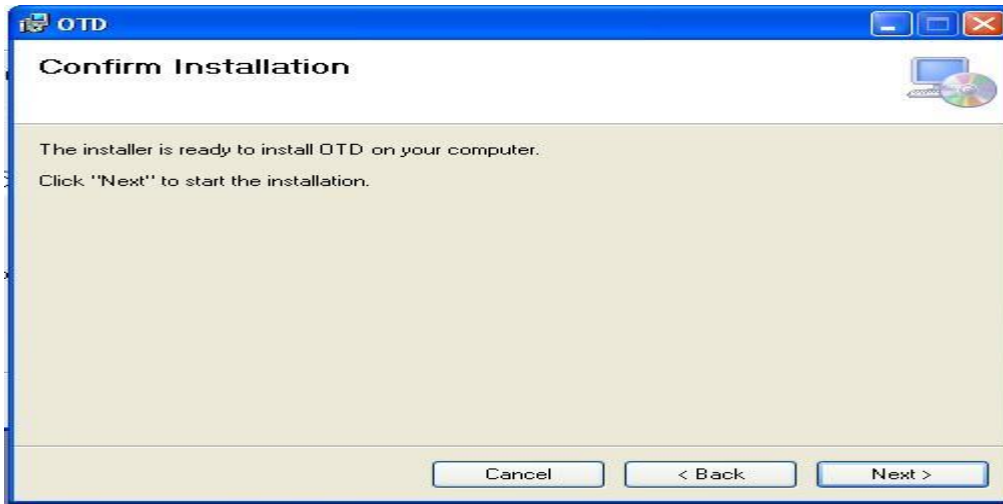
Double click on setup.exe and complete the steps as mentioned in the set-up wizard window.



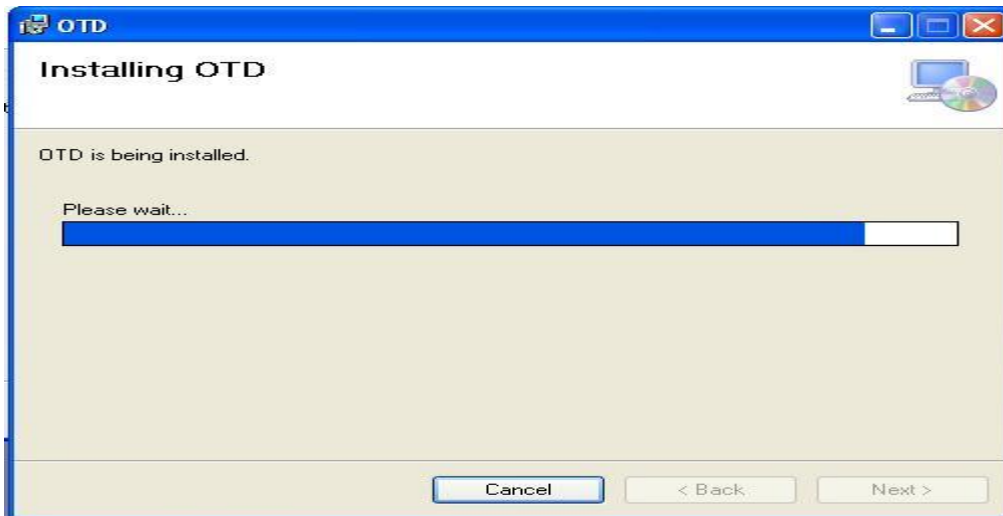
- Click on "next" to install the application on the machine. Is shown below.



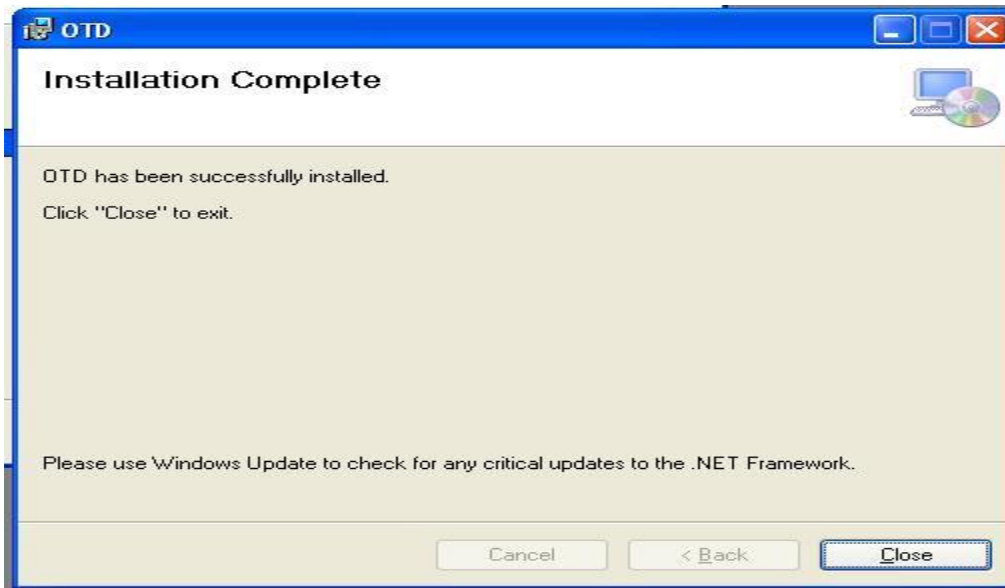
- On clicking on "Next" the following screen is displayed.



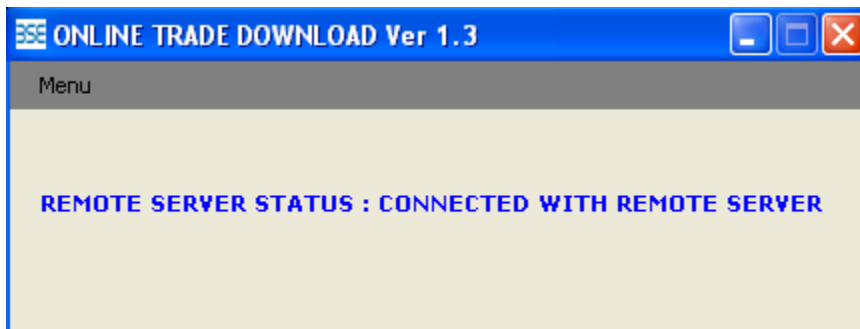
- Click "Next"
- The next screen available to the member states that "OTD" is being installed as shown below



- Once "OTD" has been successfully installed into the system, the following screen appears



- Click on "close"
- The member can view a quick icon "OTD.exe" on desktop.  
For delta download of trades, allow trade download flag in setting.ini file should be "Y". This file will be available in the application folder.
- If User Credentials are matched then following screen will be displayed indicating that connectivity has been established.



- In case of incorrect user credentials, following screen will appear.

