

Annexure

Contents

Cautionary Messages for additional Surveillance Indicators/Other Indicators in Equity Segment.....	3
--	---

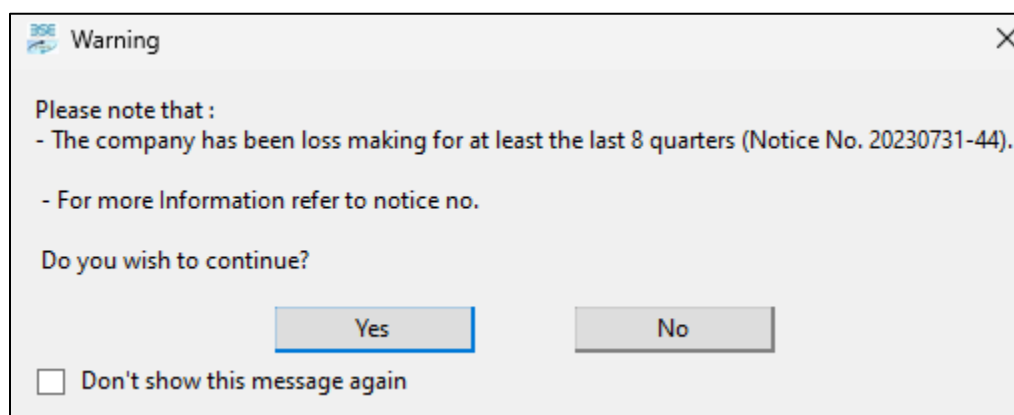
Cautionary Messages for additional Surveillance Indicators/Other Indicators in Equity Segment

Cautionary Messages for additional Surveillance Indicators/Other Indicators have been introduced so that the person is aware of such new alerts on the security before placing the order.

Following are the Indicators for which the Cautionary Messages will be displayed:

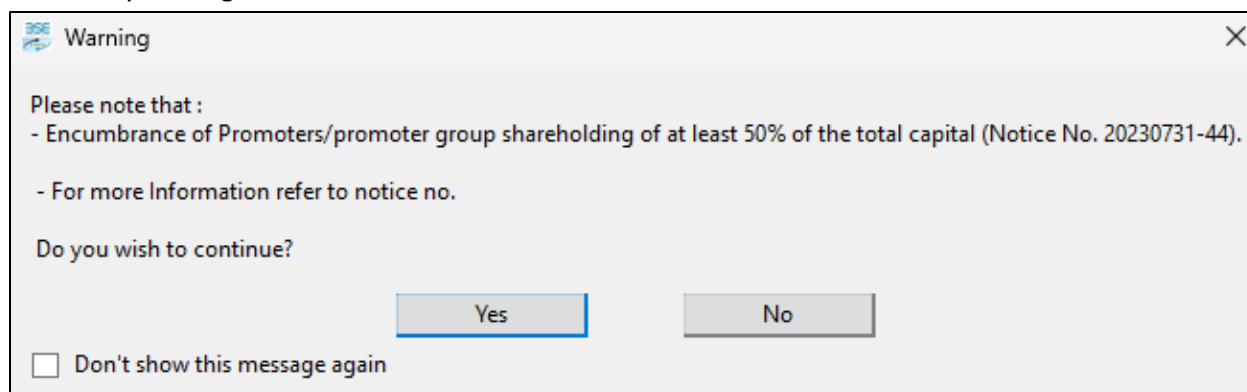
1. The company has been loss-making for at least the last 8 quarters for the main board and last 2 years for SME companies on consolidated basis. Where only standalone results are applicable to the companies, the same will be considered instead of consolidated basis.

Cautionary Message:



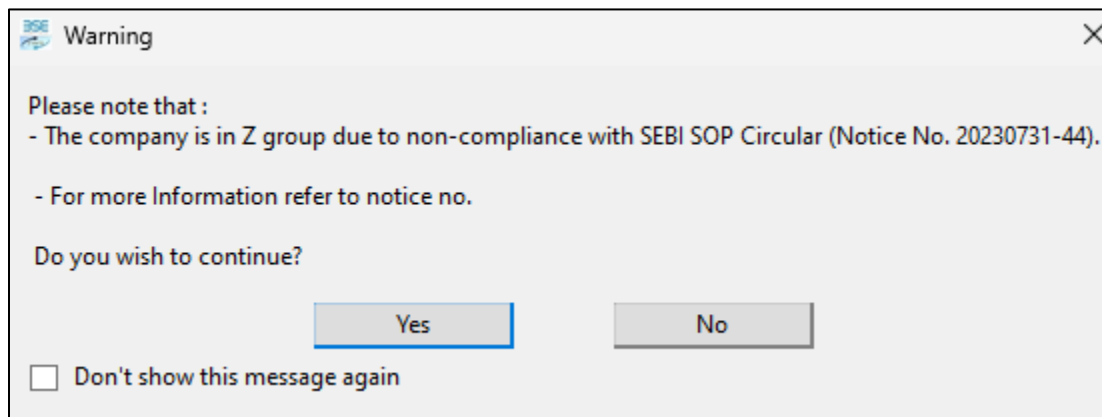
2. Encumbrance of Promoters/ promoter group shareholding is at least 50% of the total capital.

Cautionary Message:



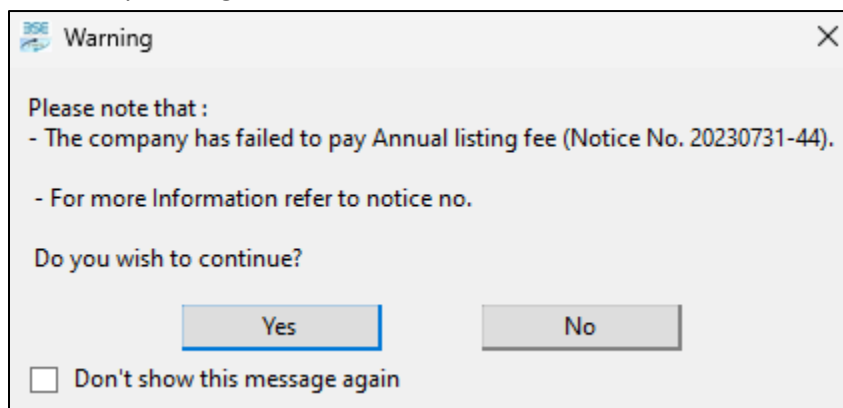
3. The company is in Z Group due to non-compliance with SEBI SOP Circular.

Cautionary Message:



4. The company has failed to pay Annual listing fee.

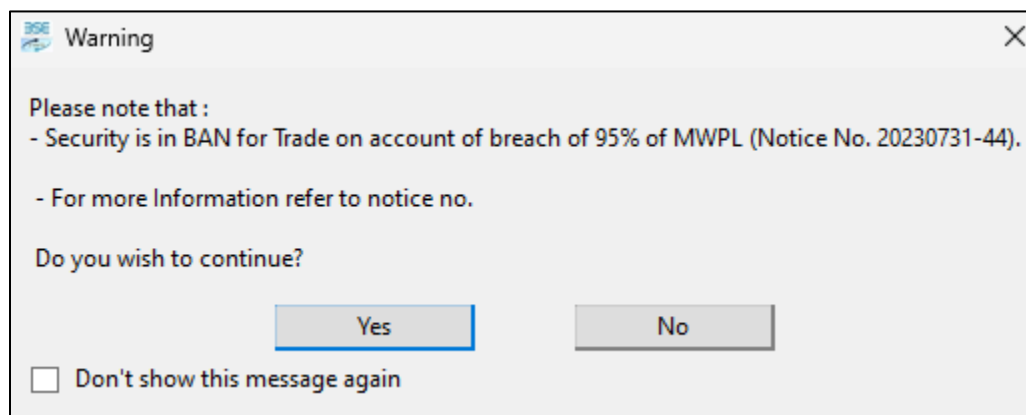
Cautionary Message:



Release of BOLTpro 9.73

5. The security is scheduled to move out of derivatives. No fresh far month contracts shall be issued.

Cautionary Message:



6. Security is in BAN for Trade on account of breach of 95% of MWPL (i.e.20% of Non-promoter holding)

Cautionary Message:

