

CON/FA SEC/C.No.4003/Note#293/  
Date:- 15.01.2025

1. The Bombay Stock Exchange Ltd., Mumbai (Through BSE Listing Centre)  
Phiroze Jeejeebhoy Towers, Dalal Street  
Mumbai-400001
2. National Stock Exchange of India Ltd. (Through NEAPS)  
Exchange Plaza, 5th Floor, Plot No. C/1,G Block  
Bandra-Kurla Complex, Bandra (E)  
Mumbai-400 051

Dear Sir/Madam,

**Sub: Disclosure under SEBI (Listing Obligation & Disclosure Requirements) Regulations, 2015**

Pursuant to applicable provisions of SEBI (LODR) Regulations, 2015, please find enclosed copy of the updated presentation of the Company, which is also being placed on the Company's website.

This is for your kind information and record.

धन्यवाद।

भवदीय,  
कृते भारतीय कंटेनर निगम लिमिटेड,

(हरीश चन्द्रा)  
कार्यकारी निदेशक (वित्त) एवं क. स.  
तथा मुख्य वित्त अधिकारी

पंजीकृत कार्यालय: कॉनकॉर भवन, सी-3, मथुरा रोड, नई दिल्ली-110076  
Regd. Office : CONCOR Bhawan, C-3, Mathura Road, New Delhi-110076

# CONTAINER CORPORATION OF INDIA LTD. (CONCOR)

THINK LOGISTICS, THINK CONCOR



## Corporate Presentation

**TOTAL BUSINESS SOLUTION UNDER ONE ROOF**

Single Window System

- Fast evacuation at port
- Rail Transportation between Port & CONCOR's Terminals
- Value added Services at CONCOR terminals
  - Container Clearance
  - Container Repair Services
  - Container Stacking
  - Container Palletization
- 1st/Last Mile Service between CONCOR Terminals & Customer premises

**THINK LOGISTICS, THINK CONCOR**

Concor India | www.concorindia.co.in | @concor\_india



Visit Our Website  
[concorindia.co.in](http://concorindia.co.in)



# THE COMPANY



## Incorporated

March 1988

## Operational

November 1989

## Authorised Capital

Original Rs.100cr;  
Now Rs.400cr

## Paid-up Capital

Original Rs.64.99cr;  
Now Rs.304.65cr  
(Due to Bonus Issues)

## Holding Pattern

Govt.: 54.80%;  
Public (incl. FII):  
45.20%

## Listed

Price Rs 882.10  
per share on NSE as  
on 31.03.2024

## Status

Upgraded as  
"NAVRATNA" on 23<sup>rd</sup>  
July, 2014

## Market Cap

Rs 53,746 Cr.  
NSE 31.03.2024  
closing

## Dividend

Rs.7,120.99 Cr.  
including  
Final Dividend  
during FY 2023-24

# PERFORMANCE HIGHLIGHTS : 2023 – 2024

## Highest ever Turnover

**₹9010.76cr**

## Highest ever PAT

**₹1230.79 cr**

### Ever highest Throughput :

4.72mn TEUs, 8.25% growth over 2022-23  
( Last Year 4.36 mn TEUs)

### CONCOR Ranked 248th

Among the top 500 companies in the coveted list of Fortune 500 companies of India.

### Containerized Cargo Movement:

Ever Highest (51.67 MT) Loaded & Moved

### Time Tabled Freight Express Train

Commenced Double Stack train operations from MMLP Dadri to Mundra Port

### 5540 Double stack Trains Moved

32.78% growth over Last Yr (Last year - 4097)

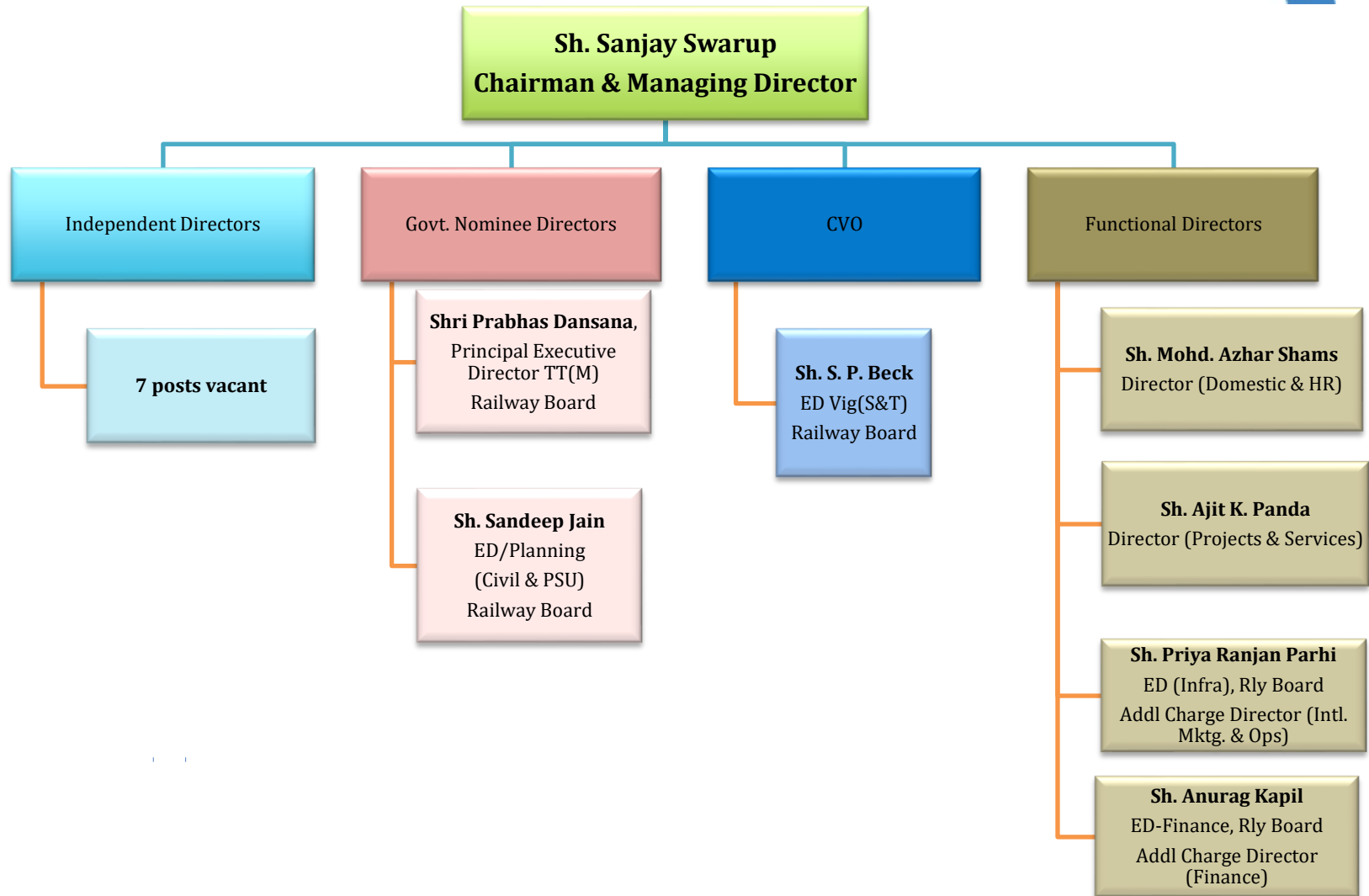
### Deployed 90 LNG Trucks

Going for 200 more trucks in near Future

## Infrastructure Additions

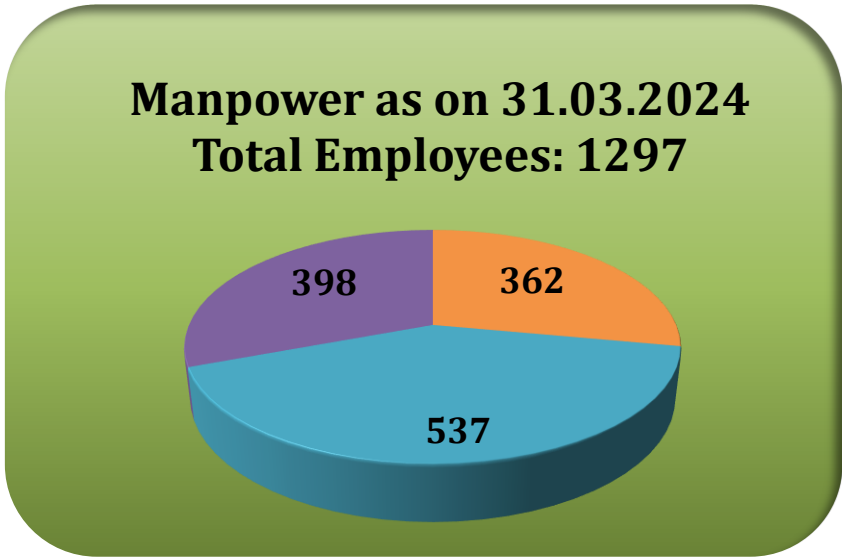
- Commissioned 14 New High Speed heavy capacity rakes (Total 377 Rakes)
- Procured 7,653 New Indigenously manufactured Containers - Boost for 'Atma-Nirbhar Bharat' Mission (Total fleet of 44,378 Containers)
- New Terminals - Jajpur, Kadakola and Paradeep

# ORGANIZATION STRUCTURE (as on 13.01.2025)



# THE ORGANIZATION

Financial Year	No. of Employees	Total Income	Employee Cost	PBT
2023-24	<b>1297</b>	Rs.9010.76 Crores	Rs.462.82 Crores	Rs.1634.48 Crores
		Total Income Per Employee	Employee Cost to Total Income	PBT Per Employee
		Rs.6.95 Crores	5.14%	Rs.1.26 Crores



# TERMINAL NETWORK

## State wise breakup :

STATE	Nos.	STATE	Nos.
Andhra Pradesh	4	Maharashtra	5
Assam	1	Madhya Pradesh	4
Bihar	1	Odisha	4
Chhattisgarh	1	Punjab	6
Delhi	1	Rajasthan	6
Gujarat	8	Tamil Nadu	5
Goa	1	Telangana	2
Haryana	1	Uttar Pradesh	5
Himachal Pradesh	1	Uttarakhand	1
Karnataka	3	West Bengal	4
Kerala	1	Tripura	1
		<b>Total</b>	<b>66</b>



## Strong Network of 66 Terminals At Strategic Locations in the Country

- PURE EXIM : 4
- PURE DOMESTIC : 24
- STRATEGIC TIE-UPS : 3
- COMBINED TERMINALS: 35

# CONTAINER TERMINALS

ADMINISTRATIVE OFFICE	EXIM TERMINALS (4)	MIXED EXIM+DOMESTIC TERMINALS (35)	DOMESTIC TERMINALS (24)	STRATEGIC TIE-UP (3)	TOTAL
<b>AREA-I (NORTH)</b> (Serves Delhi-NCR, Haryana, Himachal Pradesh, Madhya Pradesh, Punjab, Rajasthan, UP & Uttarakhand)	1. Dhandharikalan (Ludhiana) 2. Baddi	1. Tughlakabad(Delhi) 2. Ahmedgarh - JVC -PLIL*** (MMLP) 3. MMLP, Barhi*** 4. Moradabad 5. Kanakpura(Jaipur) 6. Bhagat ki Kothi (Jodhpur) 7. Kathuwas (Neemrana)*** (MMLP) 8. Dadri (Greater Noida)*** (MMLP) 9. Pantnagar - JVC- SCICL*** (MMLP) 10. Malanpur (Gwalior) 11. Agra East Bank (Agra) 12. Kanpur 13. Ravtha Road (Kota)	1. Phillaur (Ludhiana) 2. Khemli (Udaipur) 3. Suranassi 4. Dhappar 5. Nautanwa	1. PSWC Dhappar	21
<b>AREA-II (WEST)</b> (Serves Maharashtra, Gujrat, MP & Goa)		14. MMLP Balli 15. Mihan - Nagpur*** (MMLP) 16. Daulatabad (Aurangabad) 17. Mandideep (Bhopal) 18. Dronagiri Node (Mumbai) 19. Tihi*** (MMLP) 20. GCT Varnama 21. Khodiyar (Ahmedabad) 22. Ankleshwar 23. MMLP Mundra 24. Swarupganj (RTH)	6. Pithampur (Indore) 7. Turbhe (Mumbai) 8. Chhanni (Vadodara) 9. Gandhidham 10. GCT Jalna	2. Sukhpur(PFT) 3. GCT Dahej	18
<b>AREA-III (SOUTH)</b> (Serves Andhra Pradesh, Tamil Nadu, Karnataka, Chattisgarh, Kerala & Telangana)	3. Milavattan (Tuticorin) 4. Harbour of Madras (Chennai)	25. Whitefield (Bangalore) 26. Irugur (Coimbatore)*** (MMLP) 27. Tondiarpet (Chennai) 28. Vallarpadam 29. Naya Raipur*** (MMLP) 30. Guntur 31. Sanathnagar (Hyderabad) 32. Vishakhapatnam (MMLP)***	11. New Mangalore Port (NMPT) 12. Nagulapally (Hyderabad)*** (MMLP) 13. Krishnapatnam MMLP 14. Kakinada 15. Sriperumbadur 16. GCT Kadakola		16
<b>AREA-IV (EAST)</b> (Serves West Bengal, Odisha, Bihar, Assam & Tripura)		33. Majerhat (Kolkata) 34. Amingaon (Guwahati) 35. Jharsuguda*** (MMLP)	17. Fatuha (Patna) 18. Shalimar (Kolkata) 19. Durgapur*** (MMLP) 20. Haldia 21. Balasore 22. GCT Paradip 23. Bodhjungle 24. GCT Jaipur		11
<b>GRAND TOTAL</b>					<b>66</b>

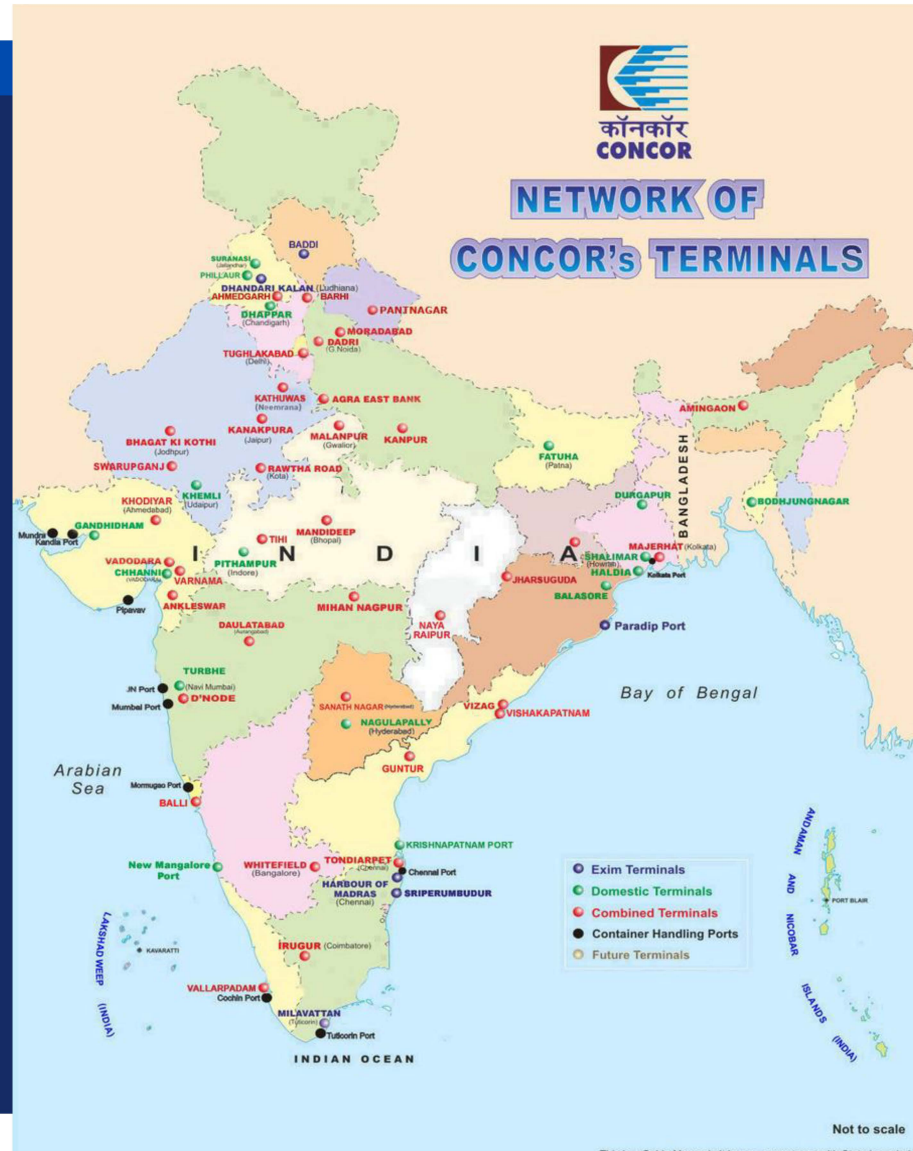
\* In additions to above, CONCOR is also providing services to trade from CRT's on pan India basis.

\*\* CONCOR also has offices for service facilitation at the Ports - JNPT, Mundra, Pipavav, Cochin , Kolkata etc.

\*\*\* All are MMLPs & having Private Freight Terminals (PFTs) as per IR policy



# MAP OF CONCOR'S TERMINALS



# COLLABORATIONS & DIVERSIFICATION :

(SUBSIDIARIES , JVs & JWGs)



## SUBSIDIARIES

Sr No	Name of Company	Partner	% Share	Category
01	Punjab Logistics Infrastructure Limited	Punjab State Container and Warehousing Corporation Limited (CONWARE)	51	MMLP
02	SIDCUL CONCOR Infra Company Limited	State Infrastructure & Industrial Development Corporation of Uttarakhand Ltd	74	MMLP
03	FRESH & HEALTHY ENTERPRISES LTD.	WHOLLY OWNED	100	COLD CHAIN
04	CONCOR AIR LTD.	WHOLLY OWNED	100	AIR CARGO OPERATION

## JWGs

Sr No	Name of Company	Associate	% Share	Category
01	HALCON	Hindustan Aeronautics Ltd	50	AIR CARGO OPERATION
02	ANOTHER JWG (GICON) HAS BEEN FORMED WITH M/s GUJARAT INDUSTRIAL CORPORATION FOR OPERATION OF MMLP AT DAHEJ.			

# COLLABORATIONS & DIVERSIFICATION :

## (SUBSIDIARIES , JVs & JWGs)

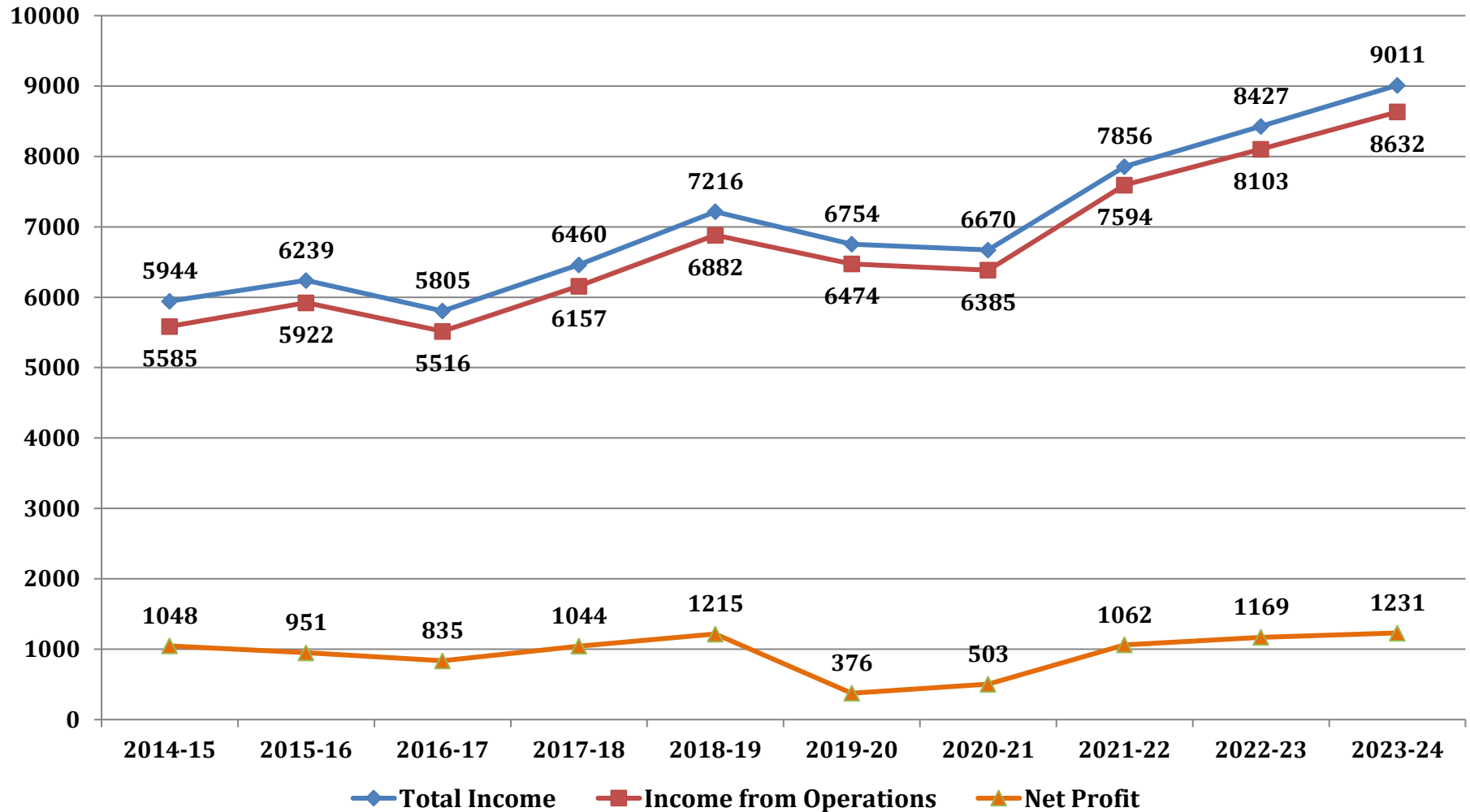


### JVs

Sr No	Name of Company	Partner	% Share	Category
01	Star Track Terminals Pvt Ltd	M/s APM Terminals India Pvt Limited.	49	CFS Operation
02	Transworld Terminals Dadri Pvt	M/s Transworld Terminals Pvt. Ltd.	49	CFS Operation
03	CMA CGM Logistics Park Pvt Ltd:	M/s CMA CGM Agencies India Pvt Ltd.	49	CFS Operation
04	All Cargo Logistics Park Pvt Ltd:	M/s AllCargo Logistics Ltd.	49	CFS Operation
05	Gateway Terminals India Pvt Ltd	M/s APMT terminals (AP Moller – Maersk)	26	Port Operation
06	India Gateway Terminals Pvt Ltd	M/s Hindustan Ports Pvt Ltd, M/s Chakiat Infrastructure & Investment Pvt Ltd & M/s Transworld Shipping Services Pvt Ltd	11.87	Port Operation
07	TCI- CONCOR Multimodal Solutions Pvt Ltd	M/s Transport Corporation of India Ltd.	49	End to End Logistics
08	Angul Sukinda Railway Ltd:	M/s Rail Vikas Nigam Ltd, M/s Jindal Steel & Power Ltd., Odisha Industrial Infrastructure Development Corporation, Govt of Odisha & Odisha Mining Corporation Ltd.	26	Rail connectivity
09	Himalayan Terminals Pvt. Ltd. (HTPL)	Interstate Multimodal Transport Pvt Ltd Nepal & Nepal Transit & Warehouse Co. Ltd.	40	ICD Operation at Nepal
10	Container Gateway Ltd	M/s Gateway Distriparks Ltd.	49	ICD Operation

# YEARLY PERFORMANCE (Rs. In Crore)

## FINANCIAL



# DIVIDEND

YEAR	14-15	15-16	16-17	17-18	18-19	19-20	20-21	21-22	22-23	23-24
DIVIDEND PAID # (Rs. In Crore)	261.27	263.21	369.97	416.76	520.95	219.35	304.65	548.36	670.22	700.69
DIVIDEND AS A % OF EQUITY	134%	135%	152% \$	171%	171% @	72%	100%	180%	220%	230%
DIVIDEND # AS A % OF NET PROFIT	25%	33%	43%	39%	43%	58.37%	60.53%	51.62%	57.33%	56.93%

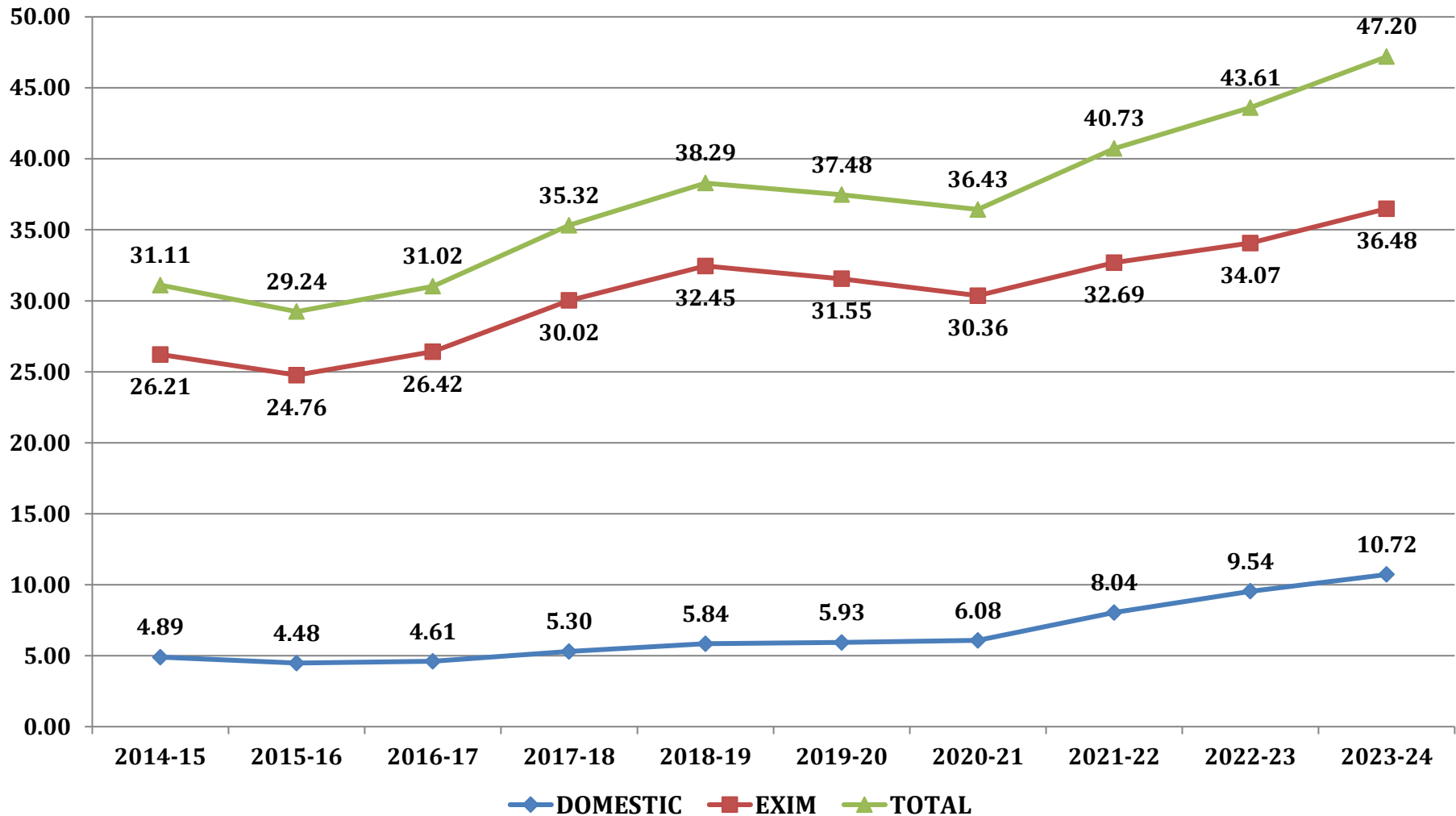
# Excluding Dividend Distribution Tax.

\$ POST ISSUE OF BONUS SHARES IN THE RATIO OF 1:4

@ POST ISSUE OF BONUS SHARES IN THE RATIO OF 1:4

# PERFORMANCE (TEUs in Lakh)

## PHYSICAL

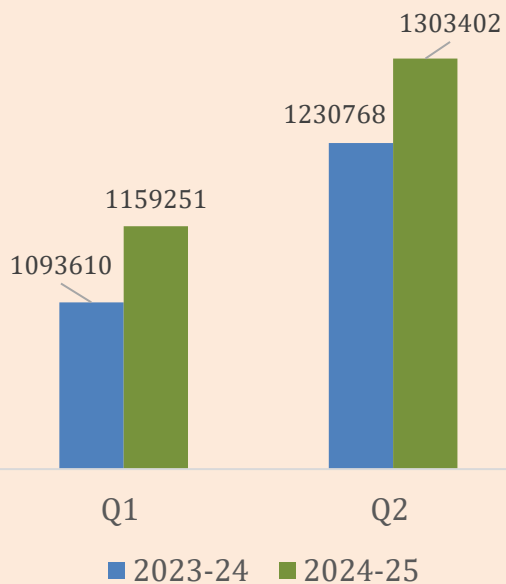


# KEY PERFORMANCE PARAMETERS

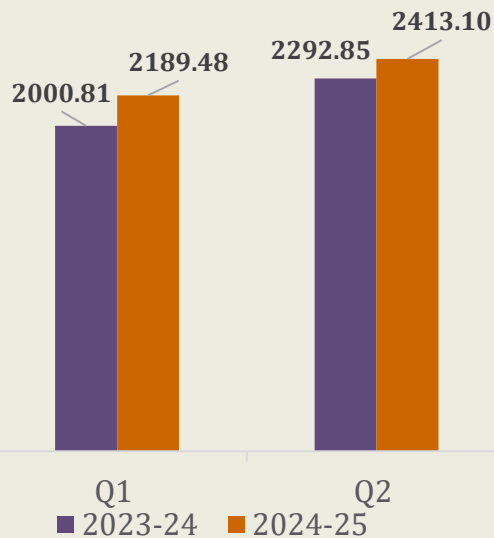
Head	FY'	FY'	FY'
	2021-22	2022-23	2023-24
EXIM HDLG (TEUs)	32,69,026	34,06,864	36,48,076
Domestic Hdlg (TEUs)	8,03,899	9,54,267	10,71,908
Total Hdlg (TEUs)	40,72,925	43,61,131	47,19,984
Optg Income (Rs. Cr.)	7594.45	8103.4	8632.49
Total Income (Rs. Cr.)	7857.58	8427.42	9010.76
Profit After Tax (Rs. Cr.)	1062.34	1169.08	1230.79
NSE Market Cap as on 31 <sup>st</sup> March (Rs. Cr.)	40,954 as on 31-03-2022	35,354 as on 31-03-2023	53,746 as on 31-03-2024
Tonnage Mn MT(tfc. by Rail)	47.69	48.99	49.11
Net Worth (Rs. Cr.)	10,777.30	11,244.98	11,812.34
Capital employed (Rs. Cr.)	9,251.18	9,722.52	10,406.46
Dividend (Rs. Cr.)	548.36	670.22	700.69
Bonus Shares Issued	Apr '08- 1:1, Sep '13-1:2, Apr '17- 1:4, Feb'19 -1:4		

# QUARTERLY PERFORMANCE

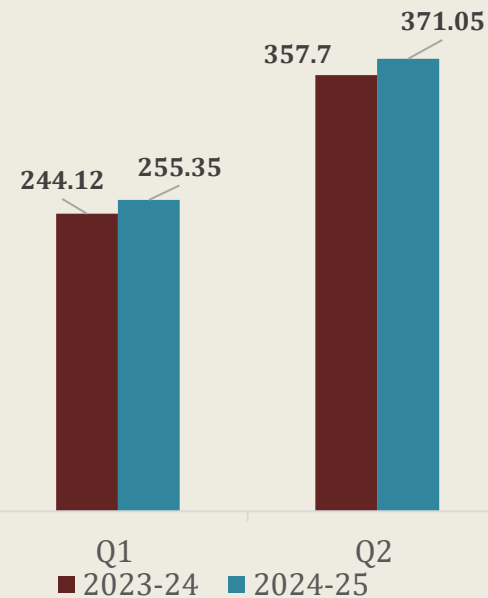
### PHYSICAL (in TEUs)



### Total Income (Rs. In Crore)



### PAT (Rs. In Crore)





# CONCOR INFRASTRUCTURE IN THE SERVICE OF NATION: A QUICK SNAPSHOT OF MOVABLE ASSETS (as on 31/03/2024)



**1,6692  
Container  
Wagons**



**10 Gantry  
Cranes**



**43,368  
Containers**



**20 Fork Lifts**



**108 Reach  
Stackers  
(RST)**



**24 Shunting  
Engines**



**75 LNG  
Trucks**

# CUSTOMER-CENTRIC FOCUS AREAS



**TOTAL BUSINESS SOLUTION UNDER ONE ROOF**

Single Window System

- Fast evacuation at port
- Rail Transportation between Port & CONCOR's Terminals
- Value added Services at CONCOR terminals
  - Custom Clearance
  - Palletization
  - Cont. Repair Services
  - Fumigation
- 1st/Last Mile Service between CONCOR Terminals & Customer premises

**THINK LOGISTICS, THINK CONCOR**

Concor India | www.concorindia.co.in | @concor\_india



**Total Logistics solutions**

**Green & Sustainable Logistics: LNG/Solar/ Rail/ Paper Less Working**



**CONCOR Signs a MOU with PSA MESA**

Aims to leverage the strengths of both organizations respective infrastructure and experience to enhance the ease of doing Business"

**CONCOR and Indian Oil Sign MOU for Green Logistics Innovation**

**CONCOR and Schenker India Private Limited (DB Schenker) sign MoU to collaborate for EXIM & Domestic Business**

**Collaboration with Market Leaders**

# TOTAL LOGISTICS SOLUTION

## A BOUQUET OF SERVICES UNDER A SINGLE WINDOW

**Rail  
Transportation**



95%  
Movement by  
Rail , 4 MMLPs  
connected on  
DFC

**1<sup>st</sup>/Last  
Mile Service**



Providing end to  
end logistics  
service through  
Mobile App

**Warehousing**



4 mn sqft  
warehouse  
space across  
the country

**Stevedoring**



**Other Value added services**

**Customs**  
Facilitation/  
Documentation



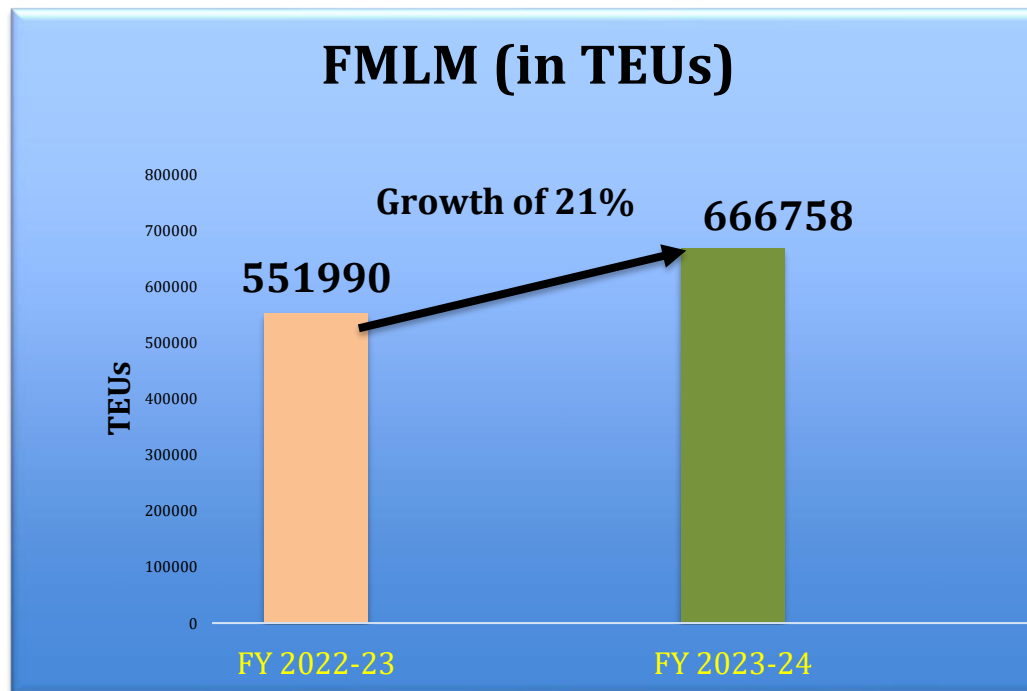
**Palletization**  
/Lashing/Choking/  
Fumigation



# FIRST MILE LAST MILE (FMLM) SERVICES

- At present CONCOR's share in total 1<sup>st</sup>/Last mile transportation at our terminals is 25%.
- Our target is to increase this share to 50% by the end of 2024 -25

## Achievements



# WAREHOUSING

Total warehouse space : 4 mn sqft

Types of warehouses:  
Transit , Bonded ,  
Cold Chain , Domestic

Value added services  
being provided in the  
warehouses



2440 MT  
**Temperature  
Controlled  
Warehouse**  
ICD Dadri



# OTHER VALUE ADDED SERVICES

- CONCOR provides several Value Added Services such as Customs facilitation , Fumigation , Palletization , Lashing, Stevedoring , Metal scanning etc to the customers under single window



Customs Clearance/ Border Clearance / TP Processing

14005

Volume in 2023-24 in TUEs



Fumigation services

4815



Palletization Services

1436



Stevedore Services

1800

Volume in 2023-24 in TUEs



Metal Scanning

4156



Lashing Services

520

# GREEN & SUSTAINABLE LOGISTICS



Deployed 130 LNG fueled trucks for road transportation services for customers. 7865 TEUs moved in FY 23-24. Another 100 such trucks likely to be inducted soon.

Signed MoU with M/s IGL & M/s IOCL for setting up of LNG infrastructure at **CONCOR's terminals**. Solar Panels already installed at ICD Dadri as a pilot project.

Signed MoU with M/s NVVN for creation of infrastructure to generate solar power at CONCOR's terminals.



**95 % Cargo moved by Train** (less emission of CO2)  
**100% paper less work** ( e-office solutions )



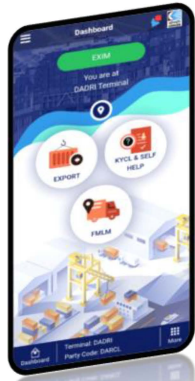
# COLLABORATION WITH MARKET LEADERS



- Signed MoUs with leading freight forwarders - M/s DB Schenker and M/s PSA MESA for bringing greater supply chain efficiency & bringing down the Logistics cost .
- In order to leverage infrastructure strength of both PSUs, CONCOR and CWC have signed MoU to collaborate in areas of mutual interest.



# USE OF CUTTING-EDGE INFORMATION TECHNOLOGY



**MOBILE APP BASED  
SEAMLESS 1ST /LAST MILE SERVICE**



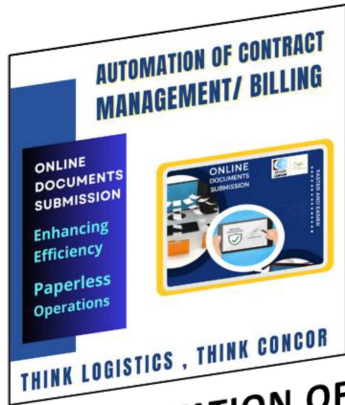
**AI BASED TERMINAL  
MANAGEMENT SYSTEM**



**KNOW YOUR CONTAINER  
LOCATION (KYCL)**



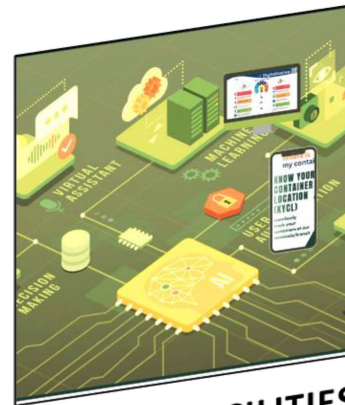
**eOFFICE: DIGITAL  
WORKPLACE SOLUTION**



**AUTOMATION OF  
CONTRACT MANAGEMENT/BILLING**



**e FORWARDING  
NOTE**



**e FILING FACILITIES  
FOR CUSTOMERS**



**EMPLOYEE SELF SERVICE PORTAL  
HRMS**

# e-LOGISTICS MOBILE APP

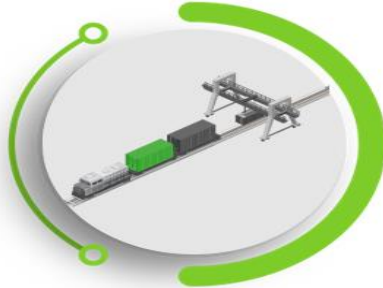
- ★ Mobile app for First Mile & Last Mile Services that offers a unified digital platform for both service providers and customers, enhancing 'Customer Value Creation' across various transportation services.
- ★ Fully automated and paperless operations save valuable time and reduce costs.
- ★ Container Movement through Mobile App – 1426 TEUs in FY 23-24



# AI BASED TERMINAL MANAGEMENT SYSTEM



Automated gate solutions



AI-powered rail and wagon mapping



Real-time container location and job tracking



AI-driven warehouse operations management

## GATE

- Container number, ISO code
- Hazard classification
- Damage and deformities
- Seal count
- Truck license plate number

## RAIL

- Wagon number & position
- Container number, ISO code
- Hazard classification
- Damage and deformities
- Seal count

## YARD

- Accurate container location tracking
- Accurate event capture
- CHE & ITV identity and tracking
- Yard job assignment

## WAREHOUSE

- Cargo loading /unloading count
- Inbound/outbound cargo tracking
- Space allocation
- Equipment utilization

### AUTOMATED

Data collection to Decision making

### INTEGRATED

Operational task to Business process

### INSIGHTS

Management insights to Operational analytics

# TERMINAL AUTOMATION BY AI/ML

Increased  
Data Accuracy

Increased  
Traceability

60%  
Reduction in  
emissions

Enabling  
swift  
informed  
decisions

Improved  
customer  
service  
level



Ease of doing  
business

Better  
Safety  
for  
Cargo

Higher  
security  
and safety

Improved  
transparency

Ease of  
data  
analysis

# KNOW YOUR CONTAINER LOCATION (KYCL)

- **Know Your Container Location** system provides location of a container lying at any of the CONCOR terminals to the customer.
- To capture container locations online in the yard, Wireless Hand held RDT's (Radio Data Terminals) have been provided at all major terminals.
- Locations are captured as and when a container is moved from one location to other within the terminal right from arrival to departure.
- Facilitates customer round the clock to track their containers through CONCOR's website.



# DIGITAL WORKSPACE SOLUTION : eOffice



- ★ CONCOR is among the pioneer PSU's for implementation of e-Office System.
- ★ This has facilitated paperless office by replacing physical file movement/approval in electronic mode.
- ★ Enhanced/Increased transparency, efficiency productivity and decision making.
- ★ Effective utilization of resources, space, efforts, cost and also environment friendly.



# AUTOMATION OF CONTRACT MANAGEMENT BILLING

- Online Submission of Invoices by Contractors through Digital Signatures round the clock through CONCOR's integrated digital platform (<https://ebillingconcorindia.com/emb>)
- Integrated with Financial Accounting System(ERP).
- Integrated with GeM Portal
- Online Payments are being processed/ paid to Contractors.



# e-FORWARDING NOTE FOR STAKEHOLDERS



भारतीय कंटेनर निगम लिमिटेड  
Container Corporation of India Limited  
(भारत सरकार का उपक्रम)  
(A Govt. of India Undertaking)



Menu



CPDA

CENTRAL PRE DEPOSIT ACCOUNT

CPDA



Pending Task

0

View Details




Circular Notice

3

View All Circular Notice

CRN No: F04021004	CRN Date: 2024-02-12 11:40:19.0	PORT Location: MCPT Modified Port Cd: MCPT	FRT: No	HND: No	TIC: No	EIC: No	DCH: No	DAC: No	IDF: No
No. of Container: 1									
CRN No: F04021008	CRN Date: 2024-02-14 10:59:02.0	PORT Location: MCPT Modified Port Cd: MCPT	FRT: No	HND: No	TIC: No	EIC: No	DCH: No	DAC: No	IDF: No
No. of Container: 1									
CRN No: F04021007	CRN Date: 2024-02-14 14:37:54.0	PORT Location: MCPT Modified Port Cd: MCPT	FRT: No	HND: No	TIC: No	EIC: No	DCH: No	DAC: No	IDF: No
No. of Container: 1									
CRN No: F04021007	CRN Date: 2024-02-15 11:06:46.0	PORT Location: MCPT Modified Port Cd: MCPT	FRT: No	HND: No	TIC: No	EIC: No	DCH: No	DAC: No	IDF: No
No. of Container: 1									
CRN No: F04021007	CRN Date: 2024-02-16 11:12:47.0	PORT Location: MCPT Modified Port Cd: MCPT	FRT: No	HND: No	TIC: No	EIC: No	DCH: No	DAC: No	IDF: No
No. of Container: 1									
CRN No: F04021004	CRN Date: 2024-02-16 11:40:21.0	PORT Location: MCPT Modified Port Cd: MCPT	FRT: No	HND: No	TIC: No	EIC: No	DCH: No	DAC: No	IDF: No
No. of Container: 1									

  
eFORWARDING DIGITALLY  
SIGNED & FILED SUCCESSFULLY

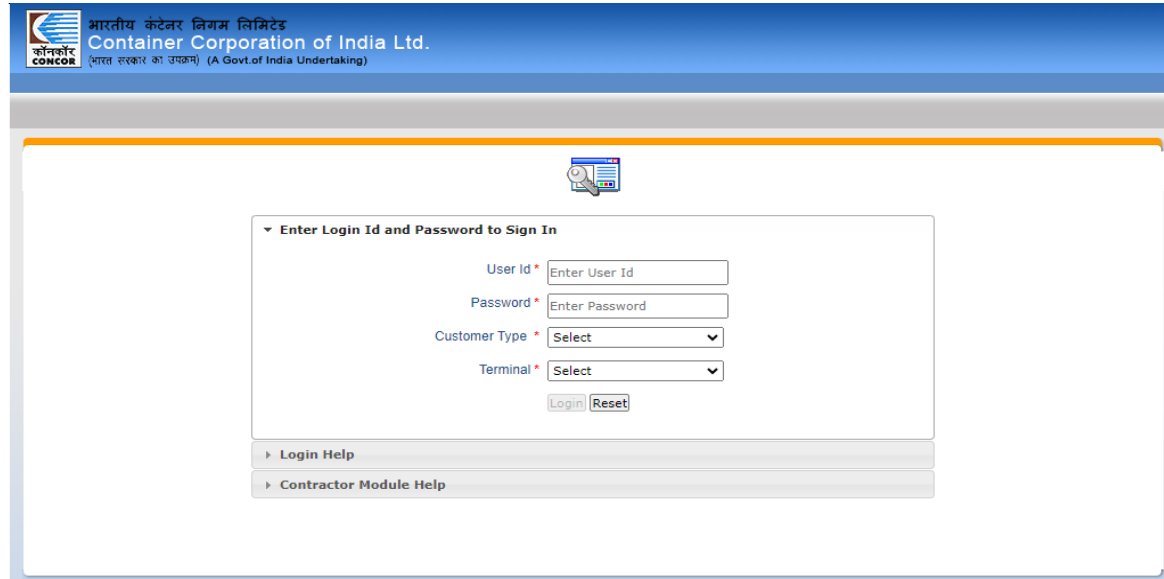




# e-FILING SYSTEM FOR EXIM OPERATIONS

- ★ e-Filing System for EXIM Operations is available round the clock and can be accessed through [www.ccilweb.com](http://www.ccilweb.com) through digital Signatures

- ★ Portal is integrated with Icegate, Railways etc.



भारतीय कंटेनर निगम लिमिटेड  
Container Corporation of India Ltd.  
(भारत सरकार का उपक्रम) (A Govt. of India Undertaking)

Enter Login Id and Password to Sign In

User Id \*

Password \*

Customer Type \*

Terminal \*

[Login Help](#)

[Contractor Module Help](#)

- ★ Stakeholders such as Shipping Lines, Exporters, Importers, CHAs, Freight Forwarders, and Joint Ventures (JVs) are provided with an e-filing option enabled by digital signatures for conducting online transactions.
- ★ Integrated e-filing platform saves time and cost & increase transparency and efficiency

# EMPLOYEE SELF-SERVICE PORTAL (HRMS)

- ★ User-friendly Employee Self-Service Portal
- ★ System based on workflow and pre-validation
- ★ Online application and approval features
- ★ Integrated with centralized facial recognition biometric attendance system at all locations, validated for salary and leave (compensatory off)
- ★ Linked with online vigilance clearance system
- ★ Accessible via web and mobile platforms



# CAPACITY BUILDING & NEW INITIATIVES

**CAPACITY BUILDING THROUGH ADDITION TO WAGONS,  
CONTAINERS, LNG TRAILERS**

**BULK CEMENT MOVEMENT IN TANK CONTAINER**

**INTERNATIONAL NORTH-SOUTH TRANSPORT  
CORRIDOR (INSTC )**

**PASSIVE COOLING TECHNOLOGY THROUGH ICE  
BATTERY**

**INNOVATIVE WAREHOUSING SOLUTIONS**

**COASTAL MOVEMENT/INLAND WATERWAYS**

# CAPACITY BUILDING THROUGH ADDITION TO WAGONS, CONTAINERS, LNG TRAILERS

## A. WAGONS, CONTAINERS, LNG TRAILERS & HANDLING EQUIPMENTS ADDED IN CURRENT FY TILL 31<sup>st</sup> DECEMBER 2024:

- 231 WAGONS (05 CONTAINER RAKES)
- 6830 CONTAINERS
- 55 LNG TRAILERS
- 16 FORKLIFTS

## B. PROCUREMENT IN PIPELINE (AS ON 1<sup>st</sup> JANUARY 2025) :

- 48.4 CONTAINER RAKES (2204 WAGONS)
- 5639 CONTAINERS (INCLUDING *500 x 20FT TANK CONTAINERS FOR HANDLING BULK CEMENT, 104 x12FT HEIGHT AIMED TO TAP LIGHT WEIGHT CARGO*)
- 100 LNG TRAILERS FOR ENVIRONMENT-FRIENDLY 1<sup>ST</sup>/LAST MILE SERVICES

# BULK CEMENT MOVEMENT IN TANK CONTAINER



✓Cement companies can plan loading/unloading of cement either at their production/consumption point or in/out Silos.

✓Pneumatic Loading / Unloading. No pit required

✓Tank can be handled at container siding

✓It will reduce multiple handling and wastage of cement.

✓Entire mode is cost-effective and environment friendly.

# INTERNATIONAL NORTH-SOUTH TRANSPORT CORRIDOR (INSTC)

## Introduction to INSTC (International North-South Transport Corridor)

- INSTC is a 7200km long multi-modal network of sea, rail, and road routes for carrying cargo from India to Russia via Iran, and CIS countries
- The INSTC agreement was signed in the year 2002 by India, Russia and Iran.

## Benefits of INSTC (Subject to lifting of all sanctions)

- Shorter Distance and Faster Deliveries: In Comparison to the existing sea route via the Suez Canal, the INSTC route is shorter and less time-consuming.
- Green Mode of Transportation: The INSTC route consists of Sea cum Rail mode which is greener mode compared to Sea cum Road mode.
- Increased trade volume between member nations: Through the INSTC route, the connectivity with the landlocked Central Asian republics can be improved, thereby increasing the volume of trade.
- Possible synchronization with Baltic, and Nordic corridors: This route can be further extended to the Scandinavian countries like Norway, Finland, Denmark, Sweden etc in future.

## Role of CONCOR

- Signed a Service Agreement with RZD Logistics (Joint Stock Company of Russian Railways) for the movement of containers via INSTC.
- As per the above agreement, CONCOR will deploy its Container in the INSTC route for the movement from Indian Gateway Ports to Russia.
- The mode of transport will be via Sea up to the Iranian Gateway port and move via rail mode from the Iranian port to Moscow



# PASSIVE COOLING TECHNOLOGY THROUGH ICE BATTERY

## Concept/Benefits of ICE BATTERY (IB) Technology

- Developed by M/s INNOVATION THRU ENERGY COMPANY LIMITED (ITE), Japan , IB Technology is an environmentally conscious substitute for Dry Ice and Diesel driven Refrigerated Truck.
- Multi-Temperature controlled system for preservation of Pharma/Agri products and other temperature-sensitive products.
- Technology is compatible with 20ft /40ft containers thus facilitating multi-modal movement through land/sea mode.

## CONCOR'S tie up with M/s ITE, Japan

- MoU signed and 13 containers taken on lease
- Movements carried out in various parts of the country and product being marketed aggressively jointly with team of M/s ITE
- For the 1<sup>st</sup> time, 2 Ice-Battery fitted containers carrying fruit/vegetables were successfully dispatched to Srivijaypuram (erstwhile Port Blair) from Chennai.



## Delivery With IceBattery® 20F/40F Hybrid Container

- Maintain chilled temperature for 48 - 72 Hrs without Electricity
- Does not effect the temperature while loading and un-loading
- Reduce Co2 emission by 70-80 %
- By Managing Humidity, the system helps to prevent dehydration and preserve the freshness of perishables for a longer duration
- Ice Battery Plates are designed to be reusable, offering significant advantage in terms of cost saving



# INNOVATIVE WAREHOUSING SOLUTIONS

- Development of modern warehousing infrastructure to meet the growing demand for storage & distribution space of various industries including e-commerce, FMCG, etc.
- ✓ Facilitating public private partnerships for the development, operation & management of state-of-the-art warehouses through JVs/Concession Agreements on BoT/other suitable models to leverage expertise & investment of private sector.
- ✓ EoI floated in March 2024 for inviting proposals from the stakeholders. More than 30 prominent companies have shown interest.
- Tender floated for selection of Cement manufacturer for rail transportation of bulk cement in CONCOR's train using CONCOR/Customer owned containers and operating Bulk cement storage facility at CONCOR's CFS at Dronagiri, Mumbai.
- CONCOR has already set up a facility for rail transportation, storage and handling of Bulk cement at its Terminal at Irugur.





## COASTAL SHIPPING

- CONCOR's entry in Coastal Shipping eco-system is expected to widen the outreach & help in providing single-window seamless service to customers utilising multiple modes of transport.
- Discussions initiated with major stakeholders for connecting cargo originating in Northern India with Southern parts of the country.

## INLAND WATERWAYS

- As per Maritime Vision 2030 Target of Modal Share of Inland Water Transport (IWT) is 5% for 2030 and 7% for 2047.
- **Increase in traffic handled on National waterways:** 30.41 MMT in FY 2014-15 to 126.15 MMT in FY 2022-23.
- 13.22 Lakhs Tonnes of Foodgrains have been transported in last three years.
- CONCOR is exploring the feasibility of movement of Foodgrain from Varanasi to Tripura through National Waterway 1 & 2.



# LEADING SOCIETAL CHANGE



Health Camps at different locations of CONCOR for stakeholders.



Procurement of medical equipments for PHCs/CHCs etc. at Chandauli, Uttar Pradesh



Development of infrastructure facilities at Ara, Bhojpur Bihar.

# LEADING SOCIETAL CHANGE



Skill training at Tuticorin, TamilNadu and Tughlakabad, New Delhi



Open outdoor GYM machine in Motihari, East Champaran district of Bihar

CONCOR IS LISTED IN

**FORTUNE<sup>®</sup>**  
**500**

**INDIAN COMPANIES**

*“A customer is the most important visitor on our premises. He is not dependent on us. We are dependent on him. He is not an interruption of our work. He is the purpose of it. He is not an outsider of our business. He is part of it. We are not doing him a favour by serving him. He is doing us a favour by giving us the opportunity to do so.”*

*- Mahatma Gandhi*



# THANK YOU



OUR ETHOS

Customer  
Value  
Creation

## CONTACT US

### PHONE

91-11-41673093.49512150/60

### Reg. Office:

CONCOR Bhawan ,  
C3 , Mathura Road  
Opp Apollo Hospital , New Delhi 110076

### E-MAIL

[co.feedback@concorindia.com](mailto:co.feedback@concorindia.com)

### Corporate Office:

NSIC New MDBP Building , 3<sup>rd</sup> Floor,  
Okhla Industrial Estate , New Delhi – 110020  
Ph- 91-11-41222500/600/700

## Follow US

 Concor India

 [www.concorindia.co.in](http://www.concorindia.co.in)

 OfficialCONCOR

 [concor\\_india](https://twitter.com/concor_india)