

WEL/SEC/2024

August 01, 2024

To,

BSE Limited 1 st Floor, Rotunda Bldg, Dalal Street, Fort, Mumbai - 400 001. Scrip Code: 532553	National Stock Exchange of India Limited Exchange Plaza, C-1, Block-G, Bandra Kurla Complex, Bandra (East), Mumbai - 400 051. NSE Symbol: WELENT
--	---

Dear Madam/ Sir,

Subject: Investor Presentation pursuant to Regulation 30 of the SEBI (Listing Obligations and Disclosure Requirements) Regulations, 2015

This is with reference to our letter dated July 26, 2024, and pursuant to Regulation 30 of the SEBI (Listing Obligations and Disclosure Requirements) Regulations, 2015, please find attached the Investor Presentation on the Un-Audited Standalone and Consolidated Financial Results of the Company for the quarter ended on June 30, 2024.

The same is also uploaded on the website of the Company at www.welspunenterprises.com

Please take the same on record.

Thanking you.

For **Welspun Enterprises Limited**

Nidhi Tanna
Company Secretary
ACS – 30465

Encl.: as above

Welspun Enterprises Limited

Welspun House, Kamala City, Senapati Bapat Marg, Lower Parel (W), Mumbai 400013, India
T: +91 22 6613 6000 / 2490 8000 | F: +91 22 2490 8020
E-mail: companysecretary_wel@welspun.com | Website: www.welspunenterprises.com

Registered Address: Welspun City, Village Versamedi, Taluka Anjar, District Kutch, Gujarat 370110. India
T: +91 28 3666 2222 | F: +91 28 3627 9010

Corporate Identity Number: L45201GJ1994PLC023920

WELSPUN ENTERPRISES LIMITED

Q1FY25 Investor Presentation
1st August 2024



BSE: 532553 | NSE: WELENT | ISIN: INE625G01013



The information contained in this presentation is provided by Welspun Enterprises Limited (the "Company"). Although care has been taken to ensure that the information in this presentation is accurate, and that the opinions expressed are fair and reasonable, the information is subject to change without notice, its accuracy, fairness or completeness is not guaranteed and has not been independently verified and no express or implied warranty is made thereto. You must make your own assessment of the relevance, accuracy and adequacy of the information contained in this presentation and must make such independent investigation as you may consider necessary or appropriate for such purpose. Neither the Company nor any of its directors assume any responsibility or liability for, the accuracy or completeness of, or any errors or omissions in, any information or opinions contained herein. Neither the Company nor any of its directors, officers, employees or affiliates nor any other person accepts any liability (in negligence, or otherwise) whatsoever for any loss howsoever arising from any use of this presentation or its contents or otherwise arising in connection therewith.

The statements contained in this document speak only as at the date as of which they are made, and the Company expressly disclaims any obligation or undertaking to supplement, amend or disseminate any updates or revisions to any statements contained herein to reflect any change in events, conditions or circumstances on which any such statements are based. By preparing this presentation, none of the Company, its management, and their respective advisers undertakes any obligation to provide the recipient with access to any additional information or to update this presentation or any additional information or to correct any inaccuracies in any such information which may become apparent. This document is for informational purposes and does not constitute or form part of a prospectus, a statement in lieu of a prospectus, an offering circular, offering memorandum, an advertisement, and should not be construed as an offer to sell or issue or the solicitation of an offer or an offer document to buy or acquire or sell securities of the Company or any of its subsidiaries or affiliates under the Companies Act, 2013, the Securities and Exchange Board of India (Issue of Capital and Disclosure Requirements) Regulations, 2009, both as amended, or any applicable law in India or as an inducement to enter into investment activity. No part of this document should be considered as a recommendation that any investor should subscribe to or purchase securities of the Company or any of its subsidiaries or affiliates and should not form the basis of, or be relied on in connection with, any contract or commitment or investment decision whatsoever. This document is not financial, legal, tax, investment or other product advice.

This presentation contains statements of future expectations and other forward-looking statements which involve risks and uncertainties. These statements include descriptions regarding the intent, belief or current expectations of the Company or its officers with respect to the consolidated results of operations and financial condition, and future events and plans of the Company. These statements can be recognized by the use of words such as "expects," "plans," "will," "estimates," or words of similar meaning. Such forward-looking statements are not guarantees of future performance and actual results, performances or events may differ from those in the forward-looking statements as a result of various factors and assumptions. You are cautioned not to place undue reliance on these forward looking statements, which are based on the current view of the management of the Company on future events. No assurance can be given that future events will occur, or that assumptions are correct. The Company does not assume any responsibility to amend, modify or revise any forward-looking statements, on the basis of any subsequent developments, information or events, or otherwise.

Any reference herein to "the Company" shall mean Welspun Enterprises Limited, together with its consolidated subsidiaries.

Welspun Enterprises At a Glance



FINANCIAL STRENGTH

- **~20% Revenue CAGR (FY2021-24)**
- **₹720 Cr. Cash on Hand**

Well-positioned to capture emerging opportunities in India's Water & Transportation needs

ROBUST ORDER BOOK

- **₹ ~11,600 Cr.*Standalone Order Book**
- Focused on execution
- New order flows to be consistent with premium returns expectations

HEALTHY PROFITABILITY

- **Higher profitability - average PAT margin for last 4 years ~13.3%**
- Returned over ₹ 700 crores by way of dividends & buyback over FY18-FY23

CAPABLE ORGANIZATION

- **Achieved Prestigious Great Place to Work (GPTW) certification – Best in Industry for Construction & Infrastructure**
- Motivated, Experienced & Committed Leadership Team
- Fosters a Culture of Learning, Innovation, Trust, & Endurance

DIVERSIFIED OFFERINGS

- Verticals : Transportation, Water & Wastewater and Niche technologies (Welspun Michigan)
- Delivery Models - HAM, BOT & EPC
- Geographies: Maharashtra, UP, Bihar, Tamil Nadu, Haryana and more...

ASSET LIGHT MODEL

- Focus on operational excellence
- Core project management expertise
- Monetization of completed assets
- Execution through specialized partners

Inside this Presentation



About Welspun World	05
Advantage Welspun Enterprises Ltd.	06
Financials Q1FY25	13
Opportunities Ahead	17
Welspun Michigan Enterprises Ltd.	22
WEL – ESG At the Core	26
Summary Historical Financials	30
Appendix – Project & Investment Details	35



Industrial Water Treatment Plant, Dewas, Madhya Pradesh

Welspun^W WORLD

Global Conglomerate

The USD 3.6 Bn Welspun Group is one of India's fastest growing global conglomerates with business interests in Line Pipes, Home Textiles, Infrastructure, Steel, Advanced Textiles, Warehousing and Flooring solutions.

The group has a strong foothold in 50+ countries and its clientele includes Fortune 500 companies.

USD **3.6** Bn
Revenue

USD **1.8** Bn
Net Fixed Assets

30,000+
Workforce

9
Manufacturing
Facilities in India,
USA, and Saudi
Arabia.



Welspun^W LIVING



Global leader in Home Textiles

Welspun^W CORP



Amongst world's largest Line-Pipe manufacturers

Welspun^W ENTERPRISES



Robust portfolio of Roads & Water Infra projects

Welspun^W ONE



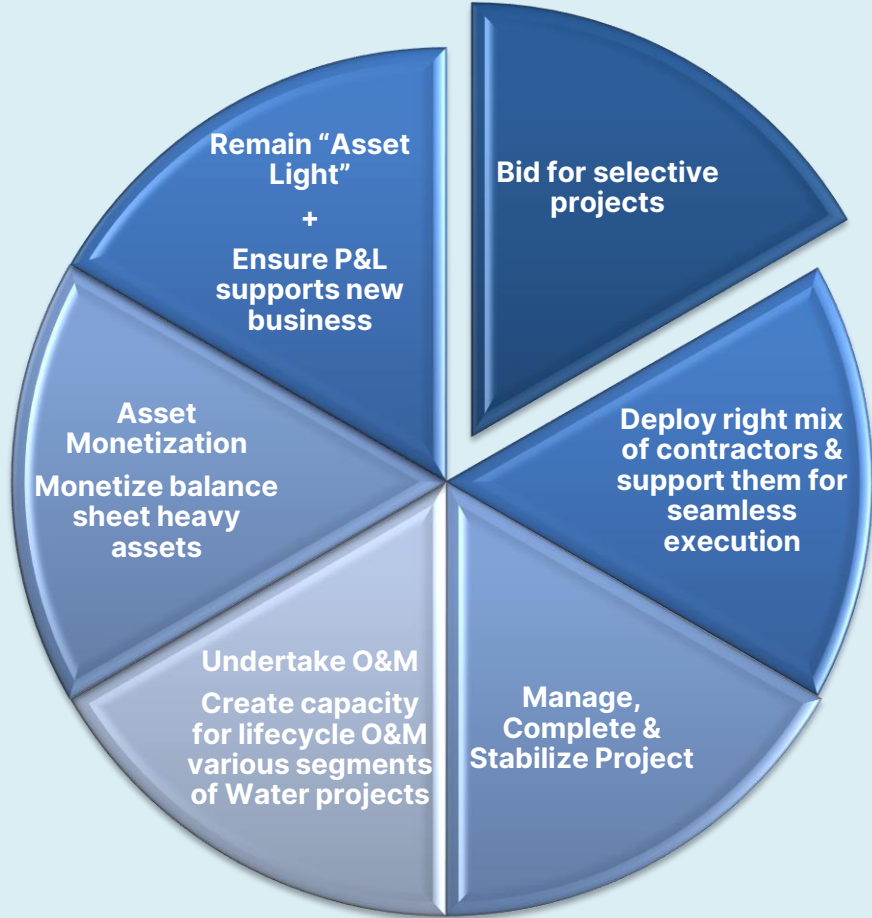
Integrated Grade-A Warehousing Solutions



Advantage Welspun Enterprises

This is a 3-D Render of Dharat WwTF

Creating Value through a Clear Strategy



Municipal Water Treatment

Industrial Water Treatment



Sewerage Treatment

Rural Water Supply



National/State Highways

Niche Tunneling



Through an experienced Management



Sandeep Garg

Managing Director

Harvard Business School and IIT (Roorkee) graduate with ~40 years of experience in diverse management roles in infrastructure and oil & gas sectors

Member of the Board

Saurin Patel

MD – WMEL

Masters in Structural Engineering with ~40 years of experience in niche engineering.

As MD built WMEL into a specialized infrastructure solution provider in tunneling, erecting pumping stations, underwater pipeline laying and rehabilitation

Asim Chakraborty

CEO (Transportation)

Civil Engineer with ~4 decades of experience Civil Construction including Industrial and Road projects.

He has been with Welspun World for the last 20 years and played a pivotal role in the successful delivery of key projects

Yogen Lal

CEO (Water)

Civil engineer with 33+ years experience in infrastructure

Extensive experience across various verticals in the field of infrastructure such as buildings, irrigation, underground metros and water

Lalit Jain

Chief Financial Officer

CA, ICWA: Accounting & Cost Accounting

~30 years experience in Commercial, Accounts, Finance, Direct & Indirect Taxation

Rajesh Jain

Chief Human Resource Officer

MBA (HR) and B.E. (Electronics)

30+ years of diverse experience across sectors such as Infrastructure, Office, Automation, Electrical Service & manufacturing, Renewable Energy, and Financial Services

Proven track record



~570 km

Experience of operating
~570 km of Toll projects

₹ 3,900 cr.

~65 km

Robust road portfolio

Capability to execute complex projects

WEL has demonstrated high level of operational excellence with the execution of several complex projects.

Key projects :

- Mukarba Chowk – Panipat
- Chikhali-Tarsod
- Gagalheri-Saharanpur-Yamunanagar
- Chutmalpur-Ganeshpur & Roorkee-Chutmalpur-Gagalheri
- Maharashtra Amravati - Package no. AM 2



Delhi Meerut Expressway

Welspun Enterprises' completed portfolio includes the Delhi-Meerut Expressway / National Expressway 3 which was featured as an Engineering Marvel of India



- India's FIRST 14-Lane Expressway
- India's FIRST Green Expressway
- Received the "Gold Award" in the excellence in Project Management from MORTH
- India's FIRST HAM project to be awarded AAA (SO) credit rating
- India's FIRST HAM project to receive annuity
- India's FIRST HAM project to be re-financed post completion
- India's FIRST Completed HAM project (332 Days ahead of schedule)

₹ 27 Cr.

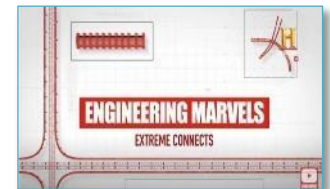
Early completion bonus
from NHAI

19 Months

Record
completion time

**Engineering
Marvel of India**

Featured on History
Channel



[Engineering Marvels:
Extreme Connects
Watch Video](#)

Awards, Accreditation & Accolades



Letter of appreciation by Prime Minister of India Shri Narendra Modi

New Delhi
23 May, 2018

Shri B. K. Goenka Ji,

I am delighted to know of your valuable contribution to the completion of Package I of Delhi-Meerut Expressway, which as you know got completed much before the target date.

We, as a nation, are standing at the cusp of a wave of development that is driven by a young nation with great aspirations. The infrastructure we are building will create new pathways for India's all-inclusive development and open new vistas of opportunity for our people.

It was our former Prime Minister Shri Atal Bihari Vajpayee's vision to connect each and every village and city with all-weather roads. He envisioned India's future built on a firm foundation of enhanced connectivity for people and businesses.

Today, from highways to I-ways, we are ensuring that our nation is ahead of the curve in infrastructural development.

The Delhi-Meerut expressway has showcased India's engineering capabilities that are well integrated with our goal of sustainable development. Also appreciable is the way in which the expressway has been converted into a green belt with initiatives such as drip water irrigation, solar plant and landscape development.

It is a matter of immense joy to see pride in people's eyes when they experience seamless commute through these modern day marvels. The new expressway is one such marvel that will ease the lives of citizens by saving them time and money as well as ensuring that local economy flourishes.

It is my firm belief that the highways built today will become runways for dreams of tomorrow to take flight. I, once again, congratulate everyone associated with this project for achieving a remarkable feat and delivering not just an expressway, but a roadway to progress and prosperity.

I wish you success in all your future endeavours.

Yours Sincerely,

(Narendra Modi)

ASSOCHAM Unique Project of the Year Award presented by Shri Nitin Gadkari



"Gold award" in Excellence in Project Management under PPP mode from MoRTH



15th CIDC Vishwakarma Awards - Construction HSE Award UPJJM & VARP



Strong platform set for future growth



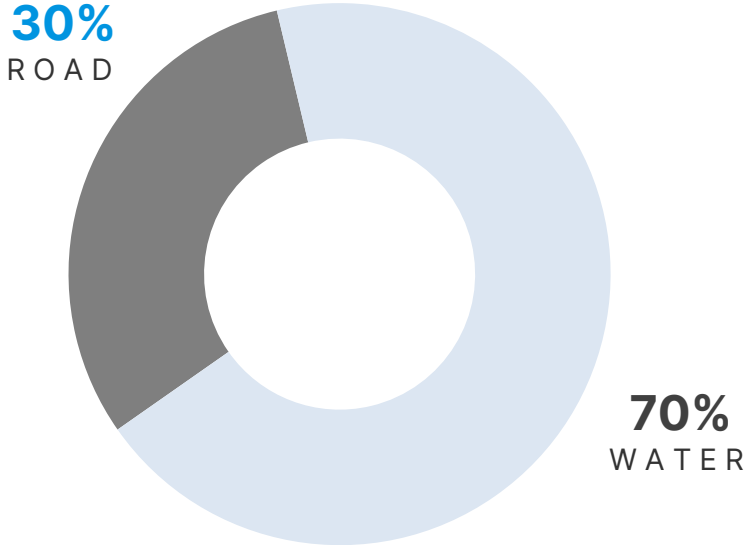
Robust portfolio of Road and Water projects



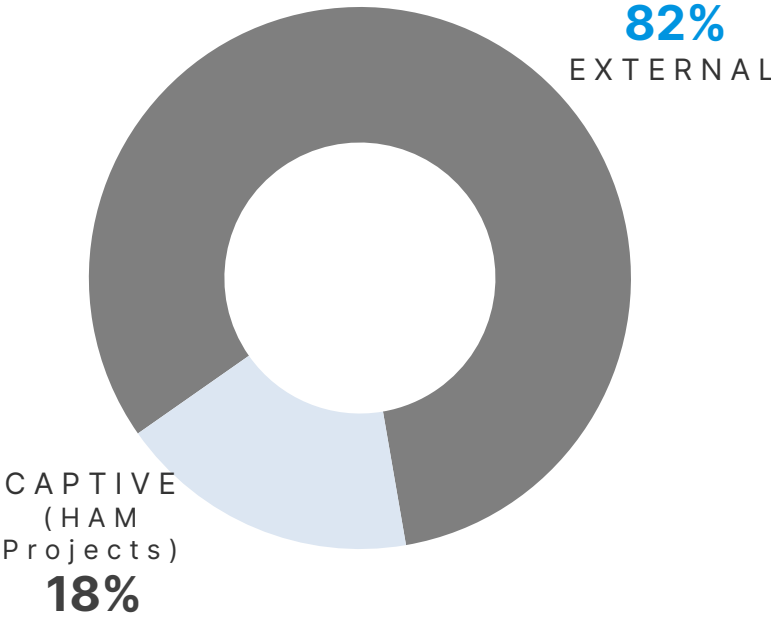
Current order book at

₹ 11,600 Cr.*
(excluding GST)

Segment Break-up



Order Book By Source



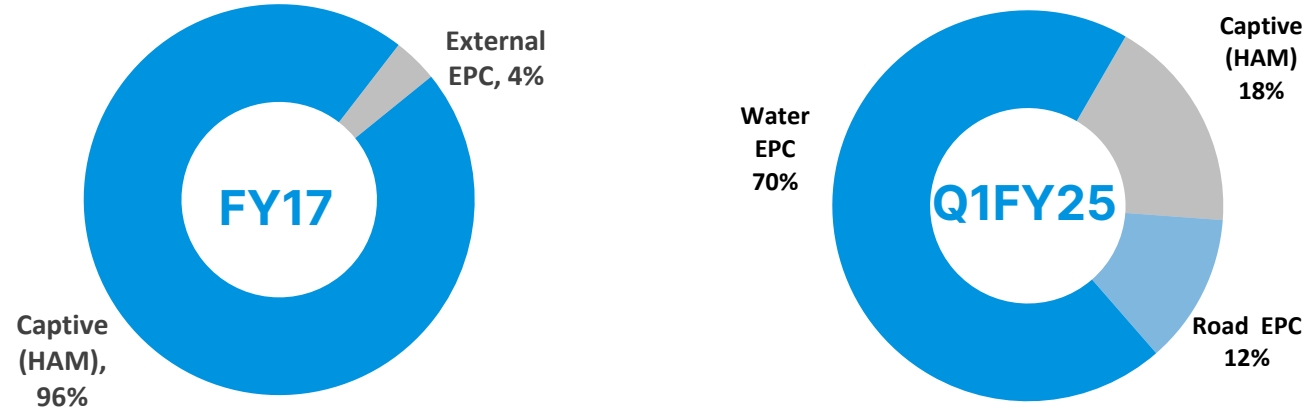
Current Order Book provides strong revenue growth visibility

* Standalone order book as on June 30th 2024 and incl. ~₹ 3,700 cr. for O&M & asset replacement in MCGM STP project & Bhandup WTP project. WMEL has ~₹ 1,500 cr. of order book book.

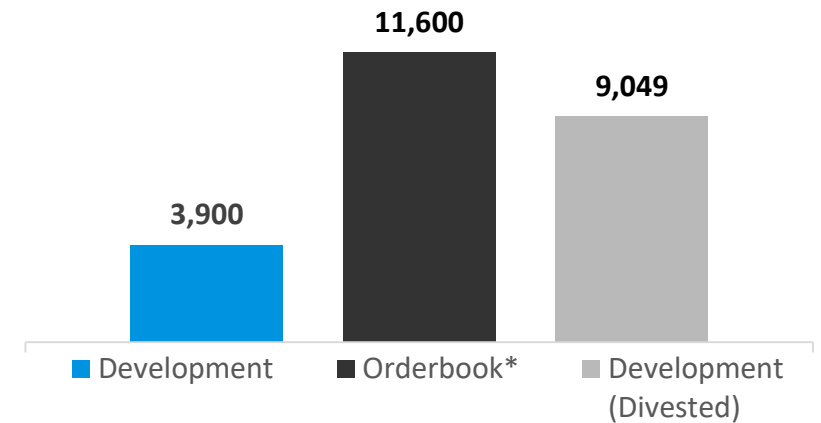


Trends towards Diversification

Trend in Order Book By Source



WEL Portfolio (in ₹ Cr.)



Way forward

Continuous focus on both development and EPC projects



Continue approach of prudent bid strategy to strengthen portfolio

Strategic positioning towards BOT and EPC projects

Water & Wastewater to be the key growth driver and focus area

Apart from NHAI, evaluate road projects of select State and local agencies

* Standalone order book as on June 30th 2024 and incl. ~₹ 3,700 cr. for O&M & asset replacement in MCGM STP project & Bhandup WTP project. WMEL has ~₹ 1,500 cr. of order book book.

04

Financials



Income Statement Snapshot - Standalone



Particulars (₹ Cr.)	Q1 FY25	Q1 FY24	YoY %	FY24	Q4FY24	YoY %
Revenue from Operations	747	681	10%	2,450	644	16%
Other Income	30	29	4%	102	22	38%
Total Income	776	709	9%	2,553	665	17%
EBITDA	129	132	-2%	439	97	34%
EBITDA margin	16.6%	18.6%	-197 bps	17.2%	14.5%	210 bps
PBT Before Exceptional Item	119	120	-1%	396	87	36%
Exceptional Item*	0	0		0	0	
PBT	119	120	-1%	396	87	36%
PAT	89	90	-1%	285	64	39%
PAT margin	11.5%	12.6%	-118 bps	11.2%	9.6%	181 bps
Cash PAT	91	91	0%	298	64	43%

~20% Revenue CAGR over last 4 years

~30% EBITDA CAGR over last 4 years

Average PAT margin of 13.3% over last 4 years

Note: Cash PAT = PBT before Exceptional Item + Depreciation + Non-cash ESOP expenses – Current tax | Prior figures have been restated wherever necessary.

Income Statement Snapshot - Consolidated



Particulars (₹ Cr.)	Q1 FY25	Q1 FY24	YoY %	FY24	Q4FY24	YoY %
Total Income	960	750	28%	3,063	867	11%
EBITDA	193	157	23%	616	157	23%
EBITDA margin	20.1%	20.9%	-80 bps	20.1%	18.1%	200 bps
PBT Before Exceptional Item	154	127	22%	479	120	29%
Exceptional Item*	0	0		0	0	
PBT	154	127	22%	479	120	29%
Profit from discontinuing operations*	-6	-1		-29	-8	
PAT	110	93	18%	319	78	41%
Cash PAT	121	98	24%	347	84	44%

~23% Revenue CAGR over last 4 years

~25% EBITDA CAGR over last 4 years

Average PAT margin of 14% over last 4 years

Note: Cash PAT = PBT before Exceptional Item + Depreciation + Non-cash ESOP expenses – Current tax | Prior figures have been restated wherever necessary.

Balance Sheet Snapshot - Standalone



Balance Sheet Snapshot (₹ Cr.)	30 th June 2024	31 st March 2024
Net worth	2,511	2,422
Gross Debt	79	0
- Long Term Debt	-	-
- Short Term Debt (Working Capital Loan)	79	0
Cash & Cash Equivalents[#]	720	923
Net Debt / (Cash)	-640	-923
Other Long-Term Liabilities	8	8
Total Net Fixed Assets (incl. CWIP)	14	16
Net Current Assets (Excl. Cash & Cash Equivalents) (adj.) [*]	668	297
Other Long-Term Investments and assets (adj.)	1,197	1,194

[#] Includes Fixed Deposits kept with banks & investments

^{*} Mobilization advance has been included into Net Current Assets

Change in Net Debt by ~₹ 283 Cr. Is largely on account of increase in working capital

Returned ~INR 700 crores through buyback & dividends over FY18-FY23

Grew Networth at ~10% CAGR over 4 years, post paybacks

02

Opportunities Ahead



Water Opportunity – Targeted for Growth



₹ 3.6 tn Across Focus Segments

India's water challenge catering to ~18% of world population with ~4% of world's fresh water resources.

India's Waste Water treatment plants treat only 1/3rd of the waste water generated daily according to CPCB

Urgent need to rejuvenate Urban Water Bodies



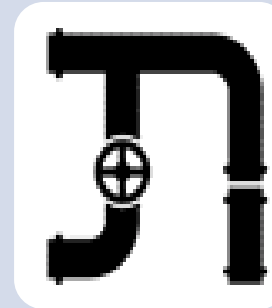
Transmission

Lift Irrigation
River Linking
Water Grid
Management



Treatment

WTP/STP
River
Rejuvenation
Desalination



Distribution

Industrial
Area
Waste water
Handling
NRW
reduction

- Identified clear segmented opportunities at nascent stage
- Curating solutions leveraging group synergies.
- Cultivate and develop projects to target high conversion probability.
- Create platform with global technology partners to tap emerging opportunities such as One City One Operator, Recycle-Reuse etc.
- Financial partnerships for competitive pricing by leveraging Group's Global credentials

Retain Focus on Selected States: Across Identified Segments

Industry dynamics - Water Sector



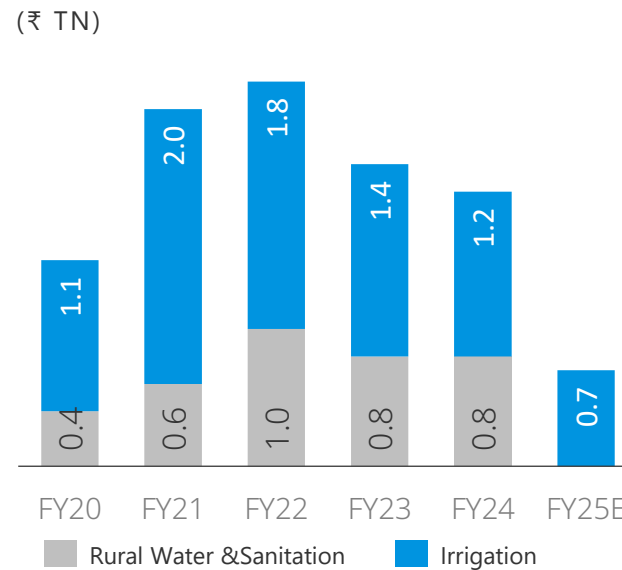
~₹ 699 bn

Allocated for piped water mission to extend tapped water coverage in recent Budget

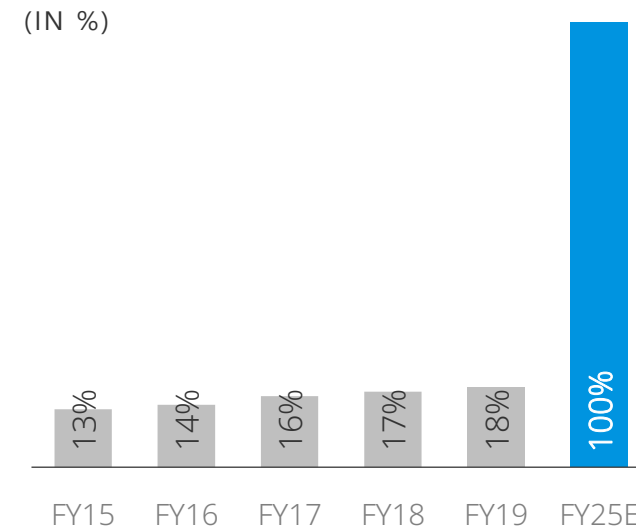
Wastewater treatment

India's Waste Water treatment plants treat only 1/3rd of the waste water generated daily according to Central Pollution Control Board

₹ 12.6 tn capital expenditure to be spent in building Water Infrastructure



Govt targets households with piped-water supply in rural areas



Government's Mission: 'Har Ghar Nal Se Jal'



With India's water crisis nearing a tipping point, the government announced the Jal Jeevan Mission to provide potable water to every rural household by 2024.

Urban Water & Sanitation - Additional

₹ 3.3 tn

Will be spent in building Urban Water Infrastructure

Vision 2025 for Water Infrastructure



~100%

Of urban and rural households connected to piped-water supply



Interlinking

Of rivers to increase area under irrigation, domestic & industrial water supply

Transport Opportunities – Targeted for Growth



₹ 3.0 tn Across Focus Segments

India's length of NH will double from 146,145 over the next 5 years

Public Private Partnerships is the way forward to achieve GoI goals

Roads constitute amongst the largest backlog of pending projects

Transport constitutes ~ ₹ 18 Tn of EPC opportunities under NIP



Roads

BOT
EPC



Tunnelling

Synergistic
Opportunities
WEL + WMEL

- Target projects that meet internal return threshold
- Ensure selection of projects with higher complexity & engineering solutions
- Strategic acquisition of WMEL to explore wide adjacencies in targeted manner
- Retain core "Asset Light" model

Retain Focus on Selected States: Across Identified Segments

Industry dynamics - Roads Sector



Attractive Opportunities & Strong Policy support

12,349 Km

National Highways has expanded by 12,349 km in 2023-24

18%

18% of projected infrastructure investment of ₹111 trillion in NIP is in the Roads sector

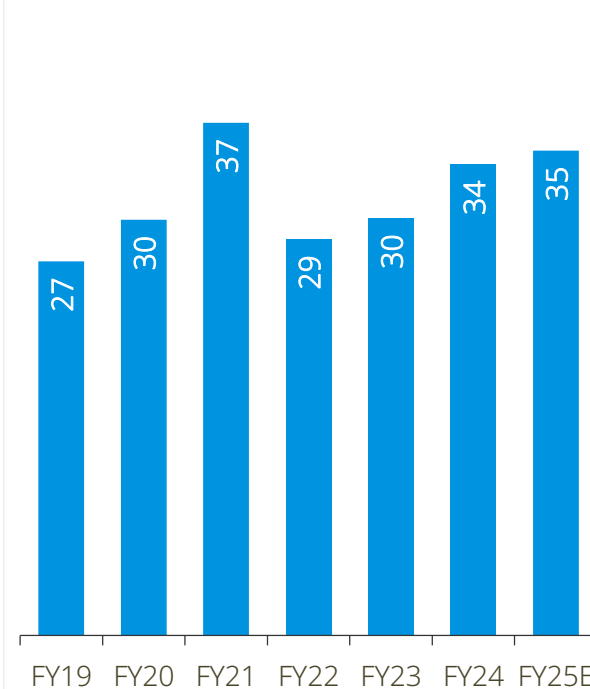
Vision 2047

Vision 2047 - MoRTH Access Controlled Highway

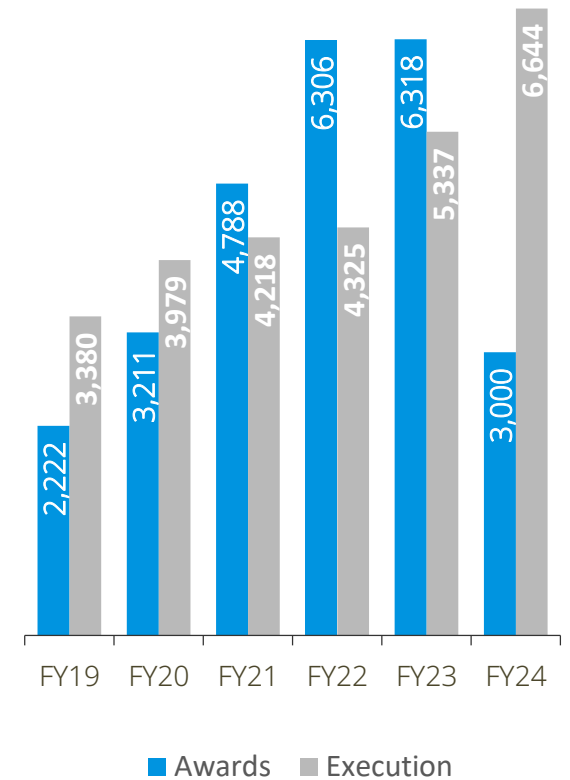
BOT Toll – 5,200 km

NHAI has Identified 2.1 lacs Cr worth of BOT Toll Highway Projects of ~ 5200 km length

Road Construction Per Day (km)



NHAI Awards and Execution (km)*



Data As on 30th June, 2024

*Source: MoRTH (The Ministry of Road Transport and Highways) Annual Report FY 2022-23, Construction World.in & various media articles 21



Welspun Michigan Engineers Ltd. (WMEL)*

*(Formerly known as Michigan Engineers Private Limited)

About Welspun Michigan Engineers Ltd. (WMEL)

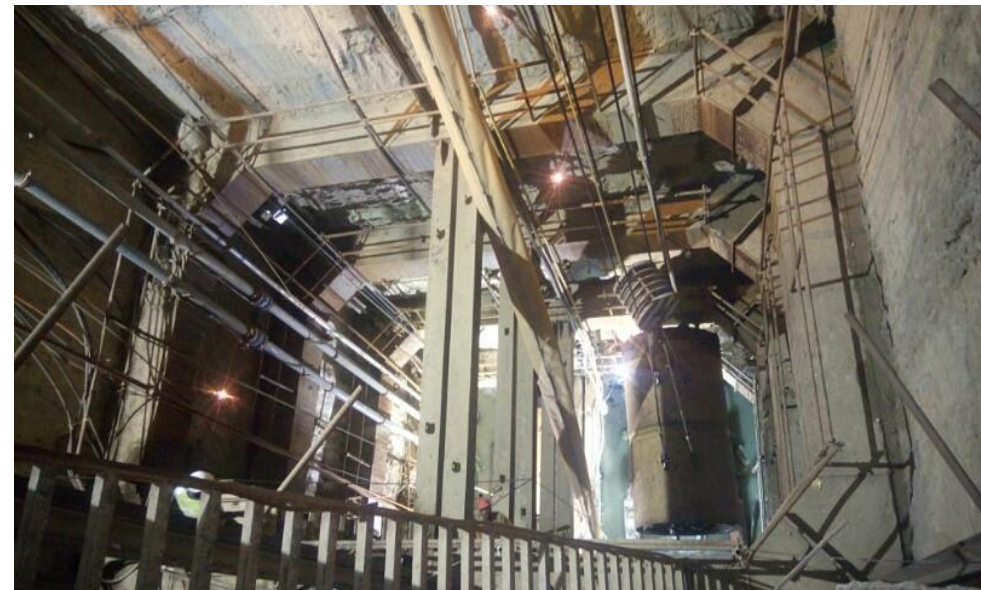


WMEL, now part of Welspun World was established in 1973. WMEL is positioned as a prominent EPC company in India with specialisation in niche business of Tunnelling and Pipeline Rehabilitation in the water & waste water segment.

Pioneer and leader in the niche segment of Trenchless Technology in India, with projects in Mumbai, Delhi, Kolkata, Gujarat & Odisha

Strong working relationships with Municipal Corporations which are responsible for development and maintenance of Urban infrastructure in Indian cities

An integral aspect of our operations is vertical integration, which includes the presence of an in-house manufacturing and fabrication facility. This strategic setup allows us to maintain a high degree of control and quality assurance throughout the production



Proven track record (WMEL)

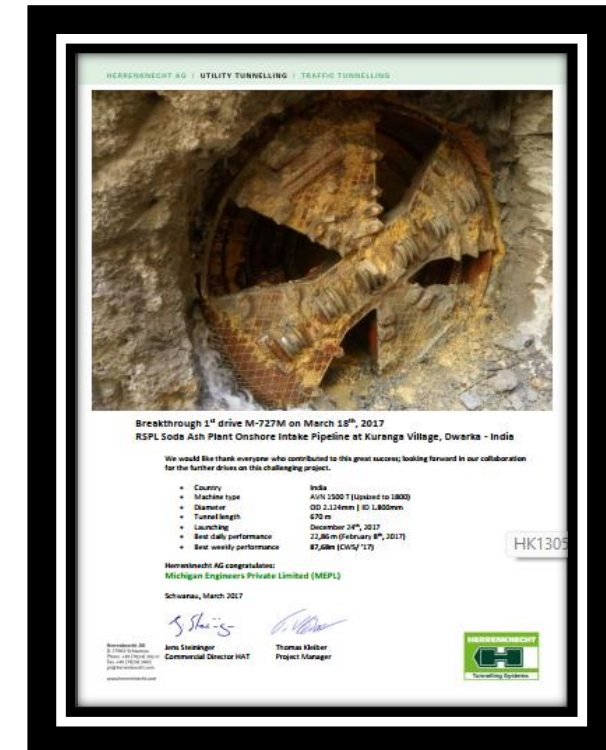


- Tunneling teams can execute projects requiring pipes ranging from 450 mm diameter to 3850 mm diameter.
- Marine teams can execute dredging using drill blast to lay pipelines underwater.
- Urban teams can build deep excavation pumping stations upto 36 cusecs handling capacities.

- Successful track record of executing numerous projects across India's largest Metropolitan cities including Mumbai and New Delhi.
- Executed variety of urban specialty infrastructure projects including Marine, Bridges, Sewage and Drainage involving mechanized tunnelling solutions, pumping stations, lake taps etc.

- Strong vertical integration with in-house engineering, fabrication and assembling capabilities.
- In house manufacturing of all the RCC pipes and segments required for the micro tunneling and segment lining projects.
- Company also manufactures the GRP and CIPP liners for rehabilitation jobs

Capability to execute complex projects



Flood mitigation in Mumbai City
[Watch Video](#)

Welspun Michigan Engineers (WMEL) - Snapshot



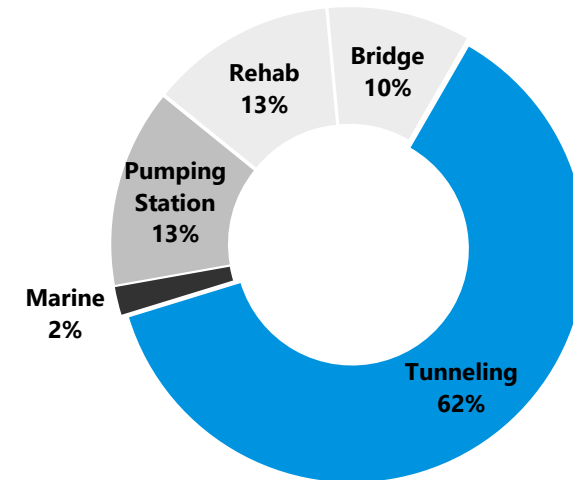
Acquisition by Welspun Enterprises in August 2023 – Expertise and reach of Welspun Group to transform Growth Trajectory

Mr. Saurin Patel has led WMEL into New Segments to cater to Emerging Needs in India

Financial Snapshot

Unexecuted Order book of ~ 1,500cr. Excluding of L1 projects worth 160 cr.

Financial Year (₹. Cr.)	FY21	FY22	FY23	FY24	CAGR
Revenue	209	293	320	412	25%
EBITDA	39	57	69	99	36%
EBITDA Margin	19%	20%	22%	24%	-



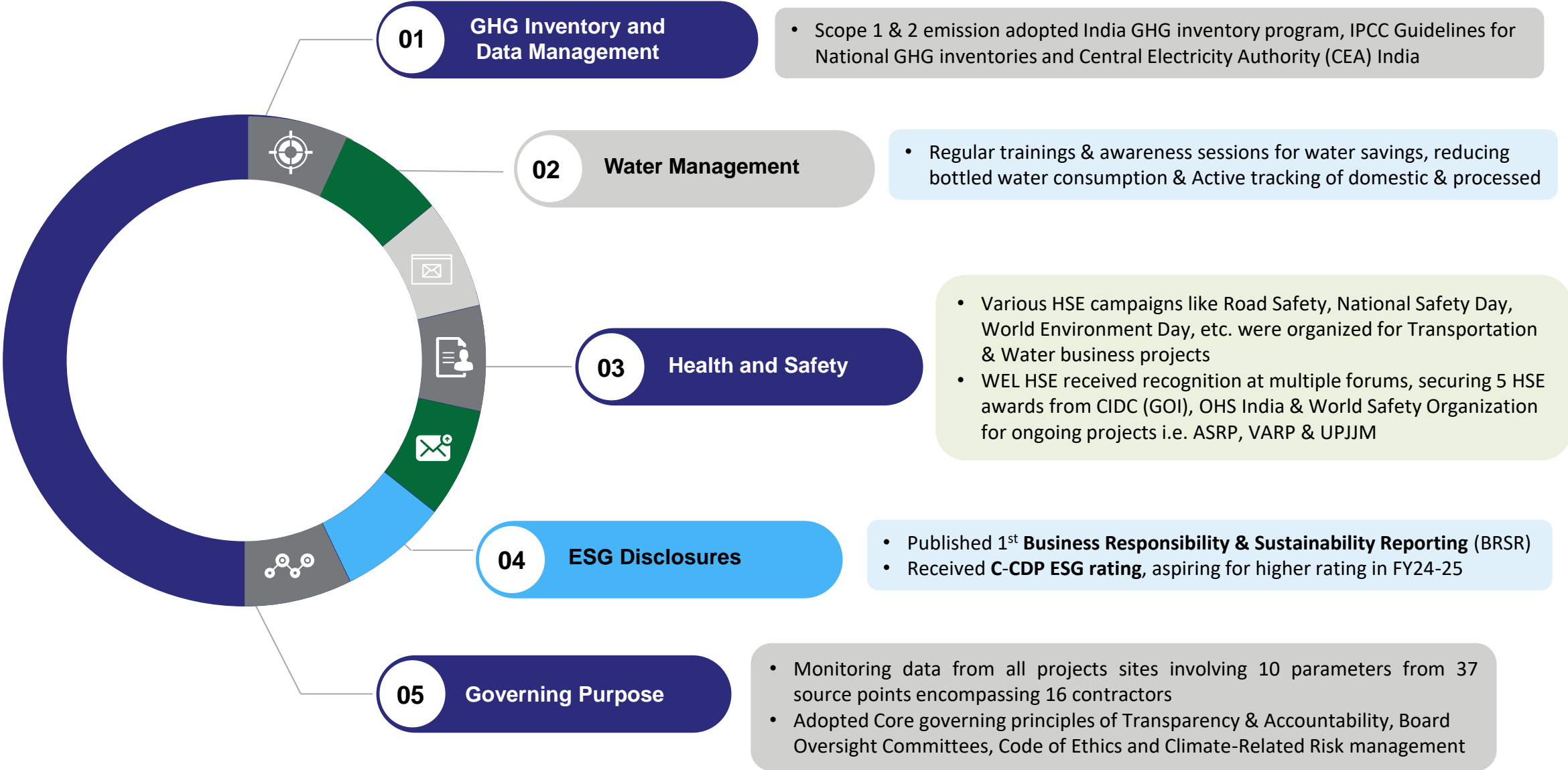
- Segment tunneling
- Micro tunneling
- Rehabilitation of Underground pipelines
- Deep Storm water pumping stations
- Underwater, Drilling, Blasting, Dredging
- Bridges, Subways

05

WEL - ESG At The Core



Leading Practices - Environment, Health & Safety



Leading Practise – CSR initiatives 3Es



EDUCATION

Wel-Shiksha enhances education by modernizing govt classrooms, fostering enhanced learning experiences. With commitment to providing enjoyable and enriching educational journeys, WFHK aims to unlock children's full potential. Their schools prioritize academic excellence and holistic development through a blend of curricular and co-curricular activities



ENVIRONMENT

Welspun's green initiatives are integrated into the WelPrakruti program, encompassing all activities centered on nature conservation. By incorporating sustainable practices and promoting biodiversity, we aim to mitigate environmental impact and promote eco-conscious living.



EMPOWERMENT

To empower athlete from challenging backgrounds to realize their ambitions and become catalysts for positive change. By providing support and opportunities, we aim to nurture their talents and help them overcome obstacles on their journey to success. Through mentorship and resources,



HEALTH

Our initiative aims to empower women in rural areas by enhancing health practices. Focusing on preventive and curative measures, our program targets adolescent girls and women, addressing their specific health needs. By fostering awareness and providing support, we strive to uplift communities by promoting healthy lifestyles and addressing healthcare challenges.

WFHK Presence

8 States

23 Districts

755 Villages

8Lacs + Beneficiaries

WelShiksha
(1,61,813)

WelNetrutva
(69,648)

WelSwashthya
(3,17,899)

WelSurakhsha
(1,38,382)

WSSW (17)

WelPrakruti
(20,517 Plants)

WelKrishi
(1,19,674)

We Volunteering
(9,264 Hours)

WelDisha
(260)

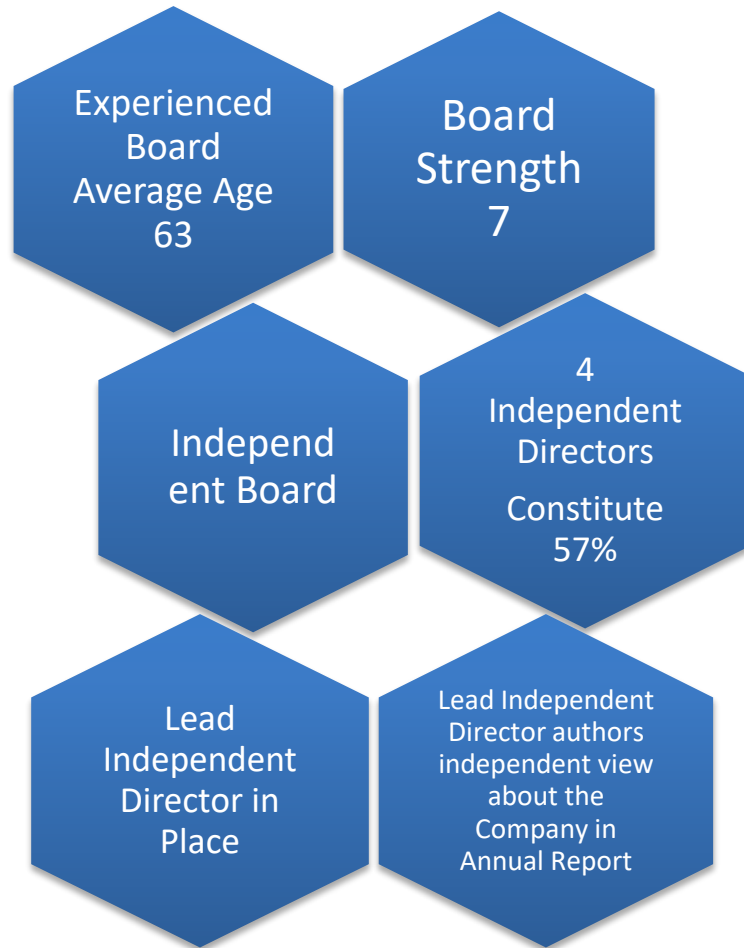
Convergence
(9,933)

Total Project Beneficiary
8,17,626²⁸

Leading Practice – Governance and Oversight



Independent & Experienced Board



Board Committees

Audit Committee

- 3 Members - all Independent Directors

NRC*

- 3 Members - all Independent Directors

STIGSR*

- 3 Members - all Independent Directors

Risk Management

- 3 Independent Directors & Managing Director

ESG & CSR*

- 3 Independent Directors

Project Review

- 2 Independent Directors & Managing Director



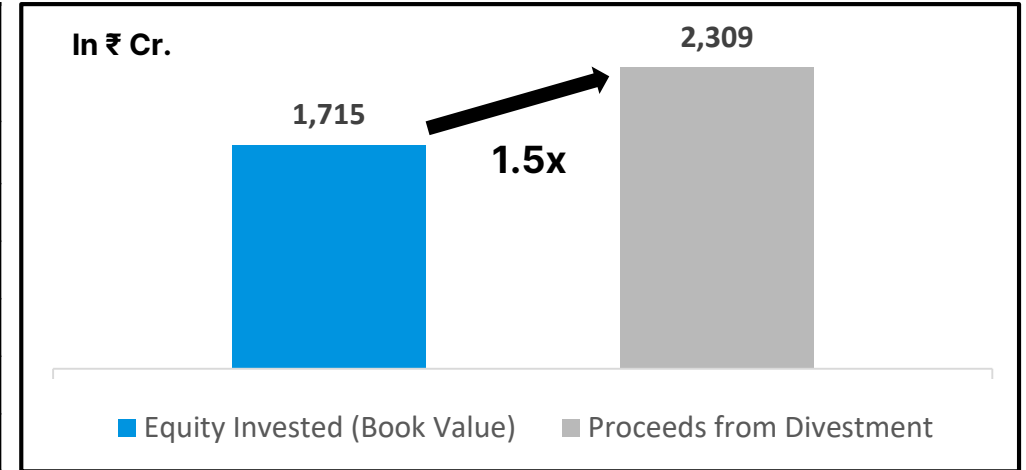
06

Summary Historical Financials

Highway Portfolio Monetization - Actis Deal



Project Name	Contract Type	Authority /Client	Status
Delhi-Meerut Expressway (Pkg 1)	HAM	NHAI	COD achieved
Chutmalpur-Ganeshpur	HAM	NHAI	COD achieved
Gagalheri-Saharanpur-Yamuna nagar	HAM	NHAI	COD achieved
Chikhali-Tarsod	HAM	NHAI	COD achieved
Maharashtra Amravati (Pkg AM 2)	HAM	MH PWD	COD achieved
Mukarba Chowk – Panipat	BOT (Toll)	NHAI	PCOD achieved



Obtained all necessary regulatory and statutory approvals for **First Closing and divestment of 100% stake in HAM assets and 49% stake in BOT toll assets** from NHAI, PWD and lenders.

Expected Receivables

Received ₹ 244.5 cr. against total receivable of ₹ 259.5 cr.

₹ 269 cr. to be disbursed after achieving balance 51% equity approval from NHAI with respect to Mukarba highway project

**~₹ 6,000 Cr.
Enterprise Value**

Excl. ~₹ 3,000 Cr.
Construction linked milestone / grant payments received/receivable from NHAI and PWD - Government of Maharashtra

**~₹ 3,544 Cr.
Debt***

As on the date of First Closing

*includes the undisbursed portion of ₹ 92 cr.

Summary Standalone Financial Highlights



Particulars (₹ Cr.)	FY-21	FY-22	FY-23	FY-24
Revenue	1,410	1,307	2,676	2,450
Operating EBITDA	169	144	237	337
Other Income	29	38	99	102
Exceptional income	0	0	510	-
Finance Cost	45	53	76	33
Depreciation	12	12	10	10
Tax	34	23	47	111
PAT (With Exceptional)	108	95	710	285
PAT Margin	7.5%	7.1%	25.6%	11%

Steady & Prudent Growth

- ❖ Revenue CAGR of ~20% delivered over 4 years from FY21 to FY24
- ❖ Average PAT margin of ~13% over a 4 years period encapsulates our strategy of Value Creation through monetization of project portfolio
- ❖ Early and successful creation of Water vertical, to accelerate growth

Balance Sheet Summary



Particulars (₹ Cr.)	FY-21	FY-22	FY-23	FY-24
Gross Debt	602	502	292	-
Cash & Cash Equivalent	381	194	1,842	923
Net Cash	-221	-307	1,549	923
Net Worth	1,819	1,894	2,465	2,422
Core Investments	1,622	1,812	488	751
Long Term Investments	320	393	424	448
Payback to Investors	30	22	135	42*

Value Creation at its Core

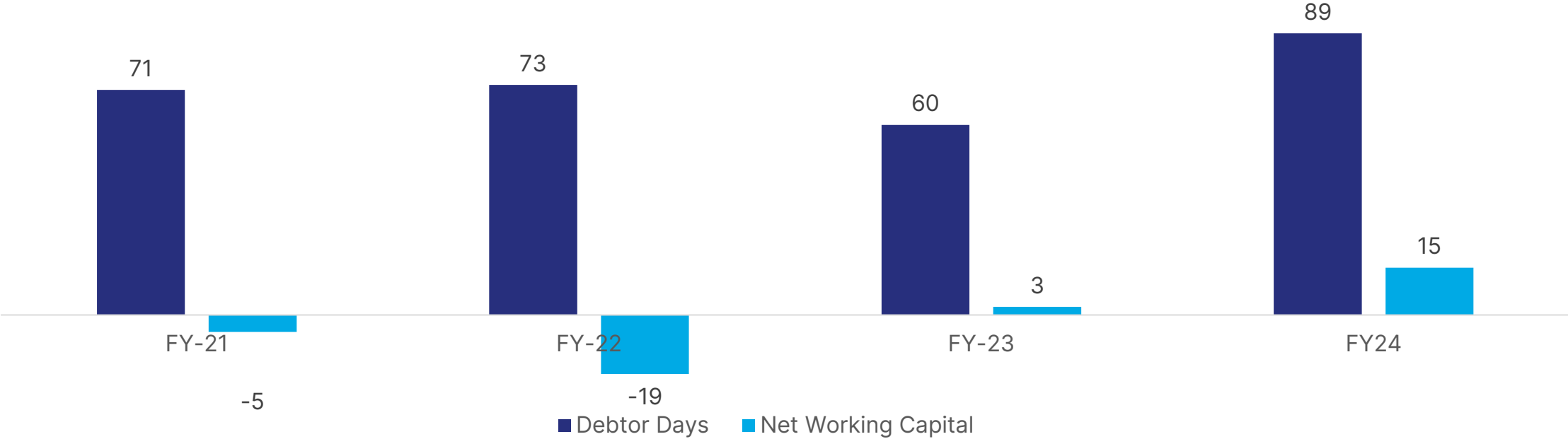
- ❖ Returned over ₹ 700 crores by way of dividends & buyback over FY18-FY23
- ❖ Net worth increased from ~ ₹ 1350 crores in FY17 to ~ ₹ 2400 crores in FY24
- ❖ Well placed for next leg of growth

* Subject to shareholder's approval in AGM

Consistently Light on Working Capital



Net Working Capital (Days)



Key Highlight of WEL Model

- WEL Consistently operates with near negative working capital
- Selective sourcing of inventory to ensure quality & timely work progress

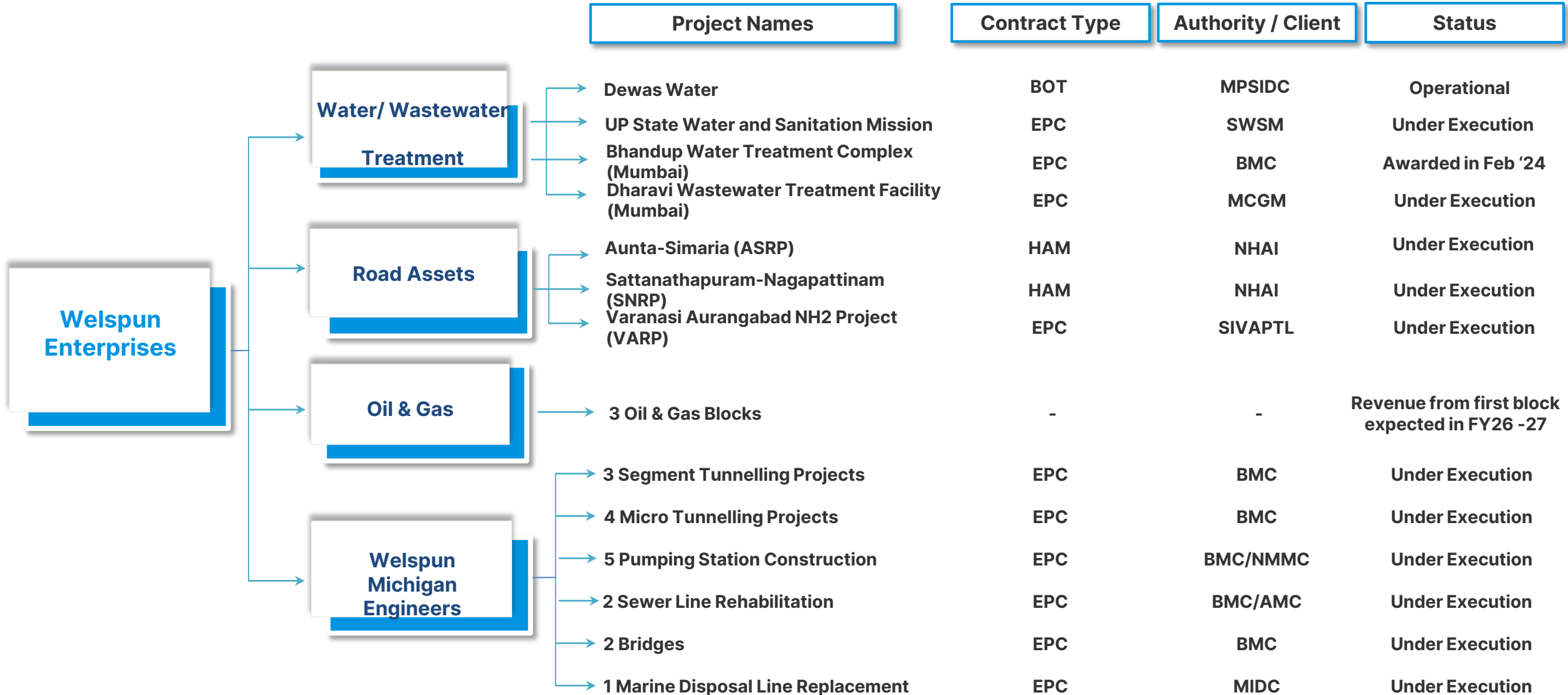


APPENDIX

Existing Portfolio of Projects

- 1 HAM: Aunta - Simaria (Ganga Bridge with Approach Roads)
- 2 HAM: Sattanathapuram – Nagapattinam
- 3 EPC: Varanasi Aurangabad NH2 Project
- 4 EPC: UP State Water and Sanitation Mission
- 5 EPC: Dharavi Wastewater Treatment Facility (Mumbai)
- 6 EPC: Bhandup Water Treatment Complex (Mumbai)
- 7 BOT: Dewas Water
- 8 Investment in oil & gas blocks: potential value accretion
- 9 Portfolio of Welspun Michigan Engineers Projects

Diversified Infrastructure Portfolio





HAM

Aunta-Simaria (Ganga Bridge with Approach Roads)

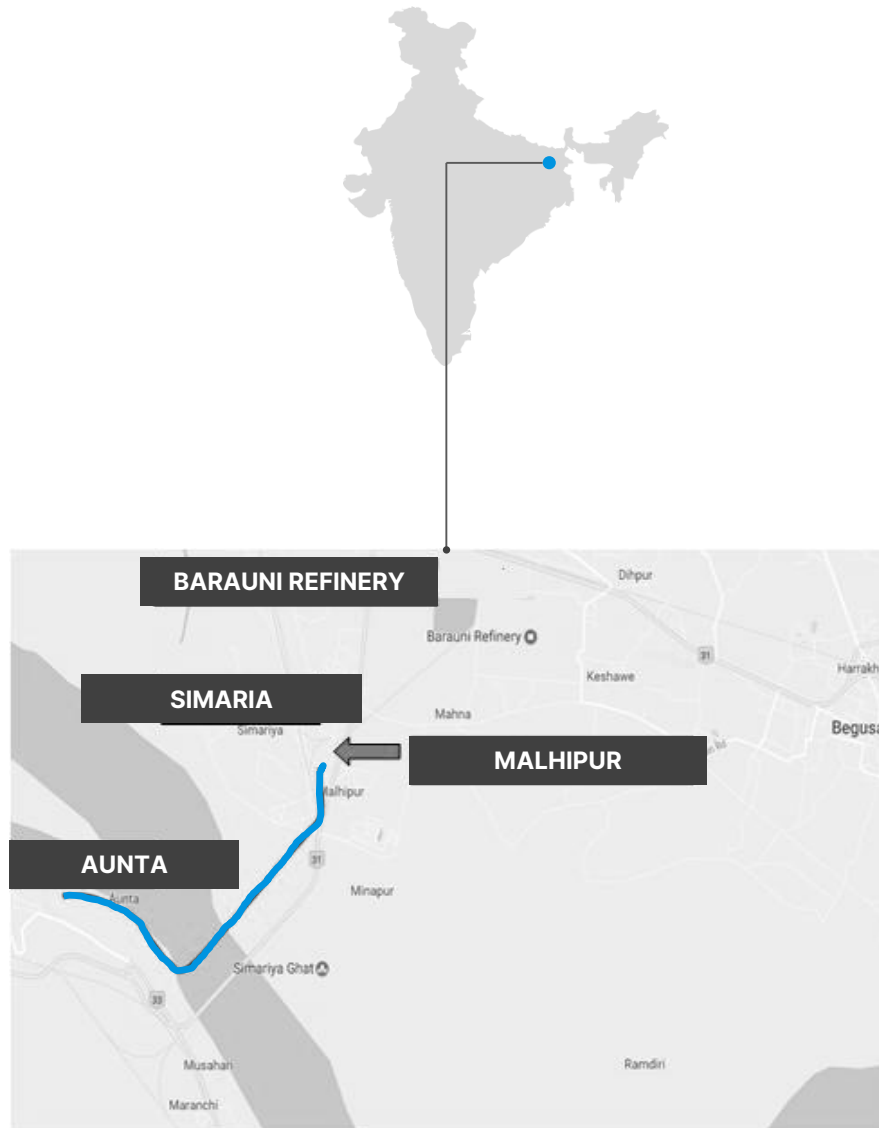
SCOPE

Six- Laning from Aunta-Simaria (Ganga Bridge with Approach Roads) Section from km 197.9 to km 206.1 of NH-31 in Bihar. **Includes widest extradosed bridge on Ganga river**

STATUS

NHAI declared the Appointed Date as 30th August 2018

The project is under execution



Project details

Project Length (Kms)	08.15 Km
Acquisition Date	Aug 2018
Financial Closure	Achieved
Appointed Date	30 th Aug 2018
Scheduled Construction Period	42 Months [^]
Concession Period after COD	15 Years

[^] EOT up to 29th October 2024 approved by NHAI

Project cost & financing * (₹ Cr.)

Bid Project Cost (with forecasted escalation)	1,568.0
Means of Finance	
NHAI	627.2
Debt	648.0
Sponsor's Commitment	156.0
O&M Payment (First Year)	
	9.9

* Forecasted figures

HAM

Sattanathapuram- Nagapattinam (SNRP)

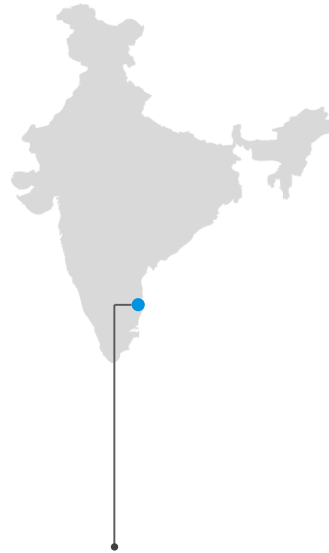
SCOPE

4 laning of Sattanathapuram to Nagapattinam (Design Ch Km 123.8 to Km 179.6) section of NH-45A (New NH -332) in Tamil Nadu

STATUS

Received Appointed Date on 5th October 2020 with 4 lane road & 4 lane structures as against 4 lane road & 6 lane structures specified in the Concession Agreement

The project is under execution.



Project details

Project Length (Kms)	55.755 Km
Award Date	July 2018
Financial Closure	Achieved
Appointed Date	5 th Oct 2020
Scheduled Construction Period	24 months [^]
Concession Period after COD	15 Years

[^] EOT up to 17th January 2025 approved by NHAI

Project cost & financing * (₹ Cr.)

Bid Project Cost (with forecasted escalation)	2,511.0
Means of Finance	
NHAI	1,000.9
Debt	1,057.0
Sponsor's Commitment	265.0
O&M Payment (First Year)	5.0

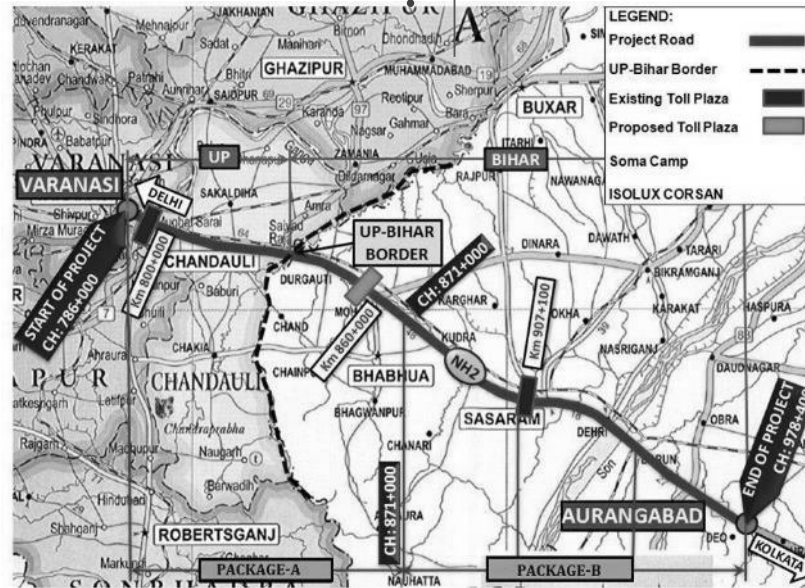
* Forecasted figures

EPC

Varanasi Aurangabad NH2 Project (VARP)

SCOPE

Six laning of Varanasi – Aurangabad section of NH-2 from km 786.00 to km 978.00 (length 192.400 km) in the state of Uttar Pradesh & Bihar



Project details

Project Length (Kms)	192.4
Original Contract	
Commencement Date	30th Sep 2021
Construction Period	24 Months
Additional Contract	
Construction Start Date	May 2022
Construction End Date	Nov 2023*

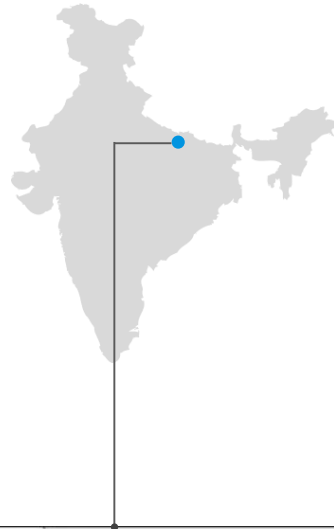
- Sought EOT till 31st March 2025

Status

- Total contract value of ~₹ 3,266 Cr. (excluding GST) comprising original scope and order for additional scope

EPC

UP State Water and Sanitation Mission



SCOPE

Rural Water Supply project under Jal Jeevan Mission by State Water Sanitation Mission UP, scope includes Survey, Design, Preparation of DPR, Construction, Commissioning and O&M for 10 years of various Rural Water Supply Projects in the State of Uttar Pradesh



Project details

Project Scope	Water Supply to Villages
Est aggregate contract value (excluding O&M value and GST)	₹ 2,900 Cr.

S No.	Revenue Division	District	No of Villages
1	Varanasi	Jaunpur	747
2	Varanasi	Sant Ravidas Nagar	877
3	Ayodhya	Ambedkar Nagar	241
4	Ayodhya	Amethi	240
5	Meerut	Bulandshahr	439
Total No of Villages			2,544

EPC

Wastewater Treatment Facility - Mumbai Sewage Disposal Project, Dharavi



SCOPE

Design, Build, Operation and Maintenance of 418 MLD Dharavi Wastewater Treatment Facility including 209 MLD Tertiary treatment facility under Mumbai Sewage Disposal Project, Stage II (Priority Works)



Above is a 3-D model

Project details

Contract period	60 Months for Design Build, 15 years of operation and maintenance
Welspun Enterprises share in JV	80%

Status

LOA received on May 27, 2022
 Project Commencement date – July 4, 2022
 Total consideration of ~₹ 4,636 Cr. (inclusive of GST)

EPC

Dharavi Project - India's First Multi-Storeyed Wastewater Treatment Facility

- A first-of-its-kind project in the country, this facility is being constructed vertically, due to the space constraints at the project site.
- Being built on just 12.7 acres of land, it has one of the lowest footprint per MLD
- Capable of treating sewage generated by a population of nearly 3.5 million people
- 50% of this treated wastewater will be tertiary treated



Above is a 3-D render

EPC

Water Treatment Plant – Bhandup Complex, Mumbai



SCOPE

Design, Build, Operation and Maintenance of 2,000 MLD Water Treatment Plant at Bhandup Complex, Mumbai.



Above is an illustrative image

Project details

Contract period	48 Months for Design Build, 15 years of operation and maintenance
Welspun Enterprises	100%

Status

LOA received on Feb 29, 2024

Received Notice to Commence effective July 23rd, 2024

Total consideration of ~₹ 4,123.8 Cr. (inclusive of GST)



BOT Dewas Water

Sector	Project Name	Location	COD	Concession End
Water Supply	Dewas Water*	MP	Apr-20	Jun-37

*Dewas Water – Modified Project

- Modified project involves the supply of treated water of up to 23 MLD to industrial customers in Dewas
- FY24 revenue stands at ₹ 12.37 Cr. with EBITDA of ₹ 6.27 Cr.

Investment in Oil & Gas blocks:

Potential value accretion

Adani Welspun
Exploration Ltd
(AWEL), a 65:35 JV
between Adani Group
& WEL, is the key
investment vehicle

Block Name	Location	AWEL Stake	WEL Effective Stake	Status
MB-OSN-2005/2	Mumbai Offshore	100.0%	35.0%	AWEL drilled a well and had made a hydrocarbon discovery wherein three layers have proven to be gas bearing, two layers have flown good amount of gas to surface. A discovery has been declared and plans are on for early monetization though development. The field development plan is currently being finalized. Estimated resources and reserves are under finalization. We have submitted our EDP for this block.
GK-OSN-2009/1	Kutch Offshore	25.0%	8.75%	FDP (Field Development Program) is under revision and finalization by the Operator ONGC based on which the commercial viability will be decided.
B9 Cluster (DSF)	Mumbai Offshore	100.0%	35.0%	Field Development Plan (FDP) has been approved by Directorate General of Hydrocarbons (DGH)

Revenue from first block expected in FY26-27

Thank You

For further details please contact

investorrelations_WEL@welspun.com/Siddharth_Bharadwaj@welspun.com

Mr. Siddharth Bharadwaj, Lead - Investor Relations

Mr Salil Bawa, Head – Group Investor Relations

CORPORATE OFFICE

WELSPUN ENTERPRISES LIMITED

CIN: L45201GJ1994PLC023920

C/8, BKT House, Trade World, Kamala City,

Senapati Bapat Marg, Lower Parel,

Mumbai - 400 013, India

Connect with us:

