



Technocraft Industries (India) Limited

Regd. Office: Technocraft House, A-25, Road No. 03, MIDC Industrial Estate,
Andheri (East), Mumbai - 400093, Maharashtra, India

Tel: 022-4098 2222; Fax No. 2836 7037; CIN No. L28120MH1992PLC069252

E-mail: investor@technocraftgroup.com ; website: www.technocraftgroup.com

November 12, 2024

To,
National Stock Exchange of India Ltd.
Exchange Plaza,
Bandra Kurla Complex,
Bandra (E),
Mumbai- 400051
Ref: Script Name: TIIL

BSE Limited
Listing Department
P.J. Towers, 1st Floor,
Dalal Street, Fort,
Mumbai – 400 001
Script Code: 532804

Dear Sir / Madam,

Sub: Investor Presentation

Pursuant to regulation 30 of SEBI (Listing Obligation and Disclosure Requirement) Regulation, 2015, please find enclosed herewith Investor Presentation for the quarter/period ended September 30, 2024.

Thanking You,

Yours truly,

For Technocraft Industries (India) Limited

Sharad Kumar Saraf
Chairman & Managing Director
[DIN: 00035843]
Encl. as above



TECHNOCRAFT
INDUSTRIES (INDIA) LTD.

Where The Best Is Yet To Come ...

INVESTOR PRESENTATION Q2 FY25

Technocraft Industries (India) Ltd. | www.technocraftgroup.com



DISCLAIMER

This presentation and the following discussion may contain “forward looking statements” by Technocraft Industries (India) Ltd. (“TIIL” or “the company”) that are not historical in nature. These forward looking statements, which may include statements relating to future state of affairs, results of operations, financial condition, business prospects, plans and objectives, are based on the current beliefs, assumptions, expectations, estimates, and projections of the management of TIIL about the business, industry and markets in which TIIL operates.

These statements are not guarantees of future performance, and are subject to known and unknown risks, uncertainties, and other factors, some of which are beyond TIIL’s control and difficult to predict, that could cause actual results, performance or achievements to differ materially from those in the forward looking statements.

Such statements are not, and should not be construed, as a representation as to future performance or achievements of TIIL. In particular, such statements should not be regarded as a projection of future performance of TIIL. It should be noted that the actual performance or achievements of TIIL may vary significantly from such statements.

TECHNOCRAFT INDUSTRIES (INDIA) LTD.

- A leading and well diversified Industrial Group.

- A Government recognized International Trading House accredited with National Award Trophy for outstanding export performance.

- Exports to more than 80 countries worldwide.

- Manufactures and exports multiple products like Drum Closures, Scaffolding Systems, Textiles and Engineering & Designing services.

- Listed on Bombay Stock Exchange (BSE) and National Stock Exchange of India.

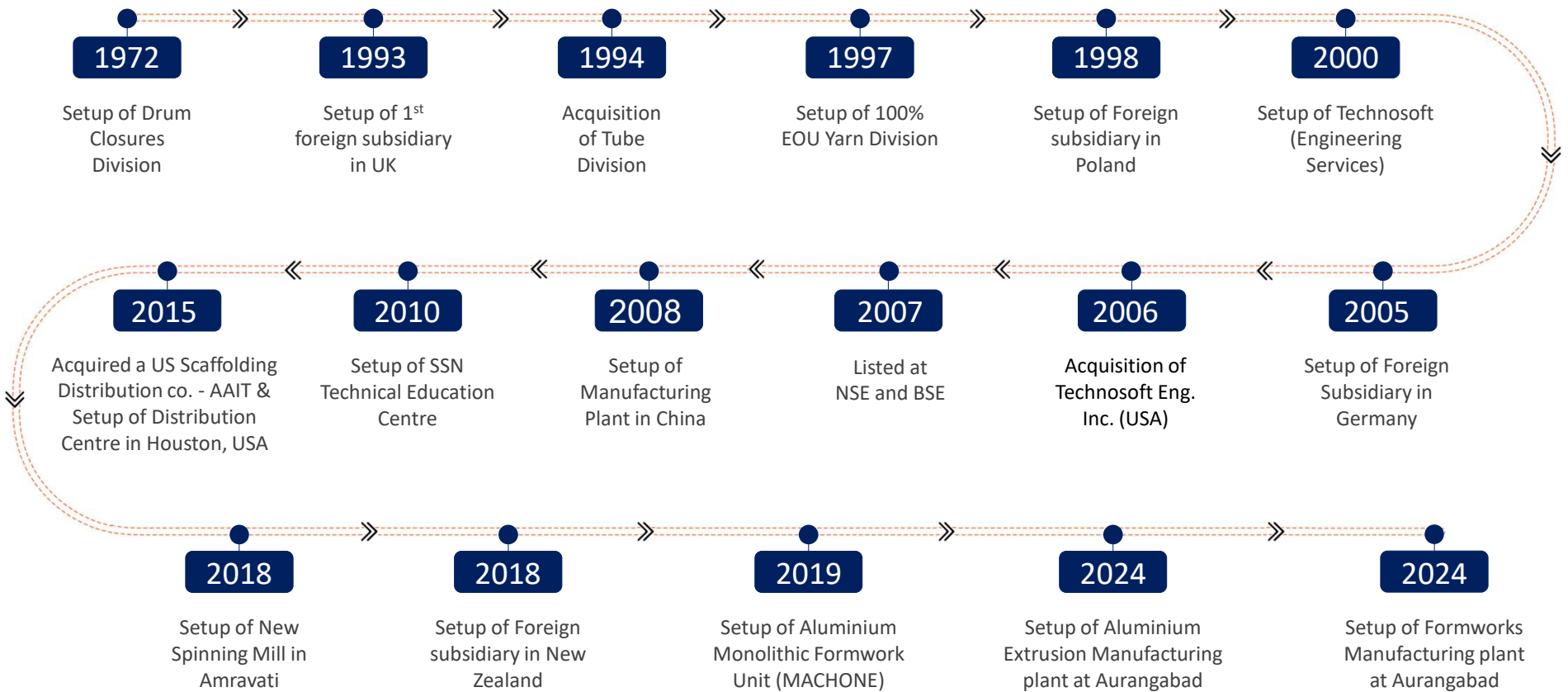
- Has its own marketing offices & warehouses in U.S.A, Canada, U.K, Poland, New Zealand, UAE, Germany and China.



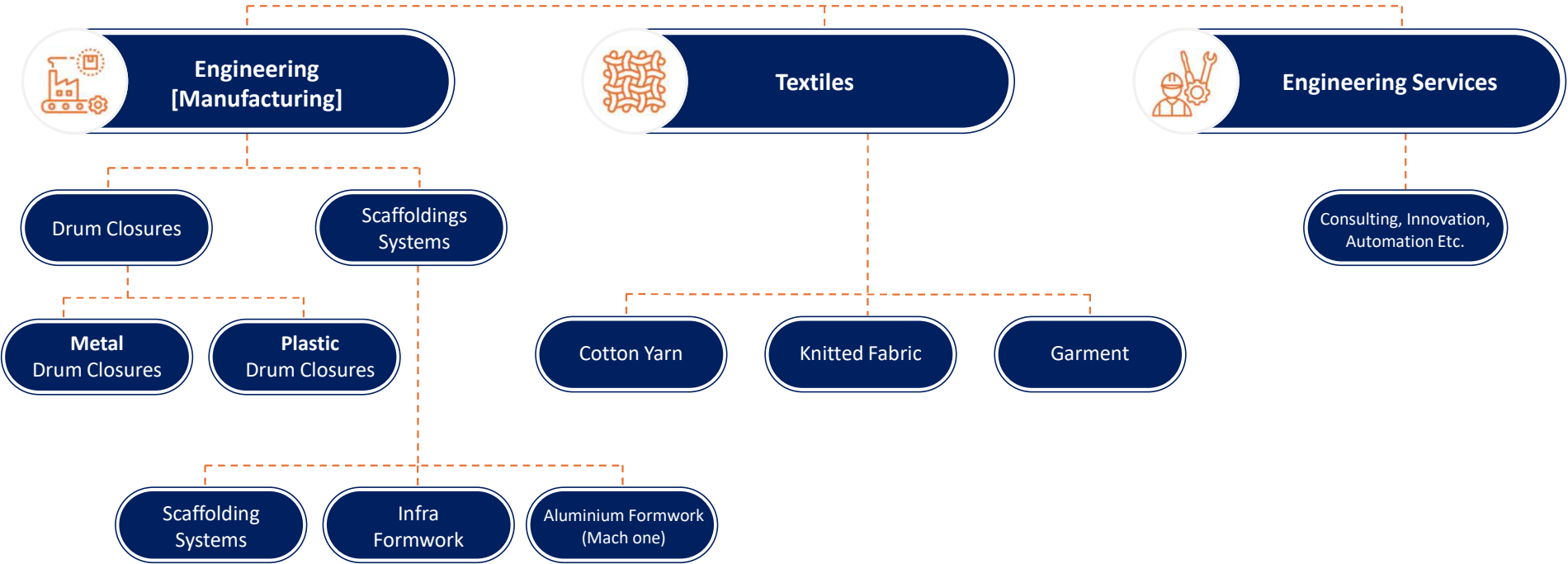
- Technocraft was established in Year 1972 with manufacturing of Steel Drum Closures and with constant innovation and expansion today it is the largest producer and exporter of Drum Closures in the world.
- In 1994 it diversified into manufacturing and exports of Steel Tubes which was later forward integrated into manufacturing of Scaffolding Systems and Formworks.
- In 1997, it further diversified into manufacturing of premium quality Cotton Yarn, Fabric & Garment. The unit was accorded 100% EOU status.
- In 2004, it went for major expansion and forward integration drive to become A Fully Vertically Integrated Textile Mill comprising Knitting, Dyeing, Finishing and Sewing operations for production of high-quality Knitted Fabrics & knitwear.
- The Company believes in constant expansion by providing most consistent and impeccable quality and services to their valuable clients worldwide.
- Technocraft is committed to ensure steady growth of the organization by determining and meeting requirements and enhancing satisfaction of internal and external customers & stakeholders.



THE JOURNEY



GROUP CHART



GEOGRAPHICAL PRESENCE



- Shivale Infraproducts Pvt. Ltd.
- Techno Defence Pvt. Ltd.
- Technocraft Fashions Ltd.
- Technocraft Textiles Ltd.
- Technocraft Formworks Pvt. Ltd.
- Technocraft Extrusions Pvt. Ltd.
- BMS Industries Pvt. Ltd.
- Technosoft Engineering Projects Ltd



- AAIT/Technocraft Scaffold Distribution LLC
- Technosoft Engineering, Inc.
- Technosoft Innovations Inc.
- Technosoft Services Inc.



- Technosoft APS



- Technosoft Integrated Solutions Inc



- Anhui Reliable Steel Technology Co. Ltd.



- Technosoft Engineering Solutions



- Technocraft International Limited
- Technosoft Engineering UK Ltd



- Technocraft NZ Ltd



- Technosoft GmbH



- Highmark International Trading F.Z.E



- Technocraft Trading Spolka, Z.O.O

DRUM CLOSURES – OVERVIEW

The company specializes in manufacturing and supply of Steel Drum Closure. Manufacturing facilities are supplemented with good Research and Development facilities and facilities for Quality Control, Testing and Packaging. The Company is the largest manufacturer of steel drum closures having worldwide market share of approximately 36%. Company produces wide variety of closures ranging from fully automatic flange insertion system to cap-sealing tools. The Company has manufacturing facilities in India as well as in China.



Drum Closures



Nylon & Plastic Plugs



Capseal Closures



Canseal Closures



Insertion Dies



Clamps

DRUM CLOSURES – STRENGTH

01

Complete product portfolio

- Flanges, Gaskets, Epoxy and Phenolic Lacquered Closures
- Stainless Steel Closures
- Lever Latches for Fibre and Metal Drum Locking Rings

02

Relationships

- Marketing & Distribution setup spreads to over 80 countries
- Largest market share globally (ex- China)
- Longstanding relationships ensures higher repeat and referral orders

03

Innovation

- Designed & developed the next generation patented technology for manufacturing of drum closures
- Three global patent products for manufacturing of GRT Flanges, Octagonal
- Clinched and Drum Top
- In-house facility for Tool & Die manufacturing & designing



DRUM CLOSURES – PRODUCT RANGE

Steel Drum Flanges & Plugs	Gaskets for Flanges & Plugs	Stainless Steel Closures System	Lacquered Closures System	Metal Cap-seal	Aluminum Flanges & Cap-seal
Leak lock plugs for reconditioning of drums	Paint Plugs	Metal & SS Tag Ring	Hybrid Plugs	Vent Plugs	Lever Latches for Locking Rings (Clamps)
Flange Insertion Dies with Automation	44 MM & 56 MM Light Closure	Can Seal Closures (Plastic Pull-up Spouts 42, 57, 61 & 63 mm)	Nylon Plugs for Metal Drums	Polypropylene Plugs for Metal Drums	Buttress Plug for Plastic Drums
Plastic Capseals with Metal Ring	E-Z Capseals	57mm Short Height Closures	¾" Plastic Push in Flange	¾" Polypropylene Plug – Short Length	Dust Cap / Paint cap for 63mm Canseal Closure

SCAFFOLDING SYSTEMS – OVERVIEW

The Company is into manufacturing of high quality and high-performance engineering modular panel shoring system which is used in residential and commercial building constructions, Industries, and Infrastructure.

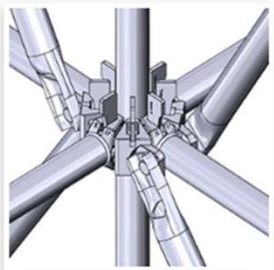
Company manufactures high quality steel tubes in-house which is one of the major components of Scaffolding Systems. Scaffolding system has been designed keeping in mind the ease of erection, health and safety regulations & without loose fitting and hardware. Company is present in premium segment of scaffolding business.

The company is a leading manufacturer and supplier of Formwork for the Buildings and Infrastructure projects. It is in this business since 2010 and is currently producing multiple type of formwork systems for different requirements in construction.

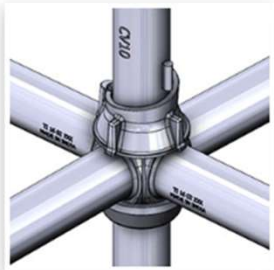


- **New product** - Manto panels For Global markets, Mach Alu ply system For Wall form , 10K Shoring Systems for USA, Tech Euro- 3 props.
- **New facilities** - Powder Coating systems, Aluminum Fabrication.
- **New processes** - Robotic welding & Material Handling cells for Mild steel as well Aluminum.
- **Development in plants** - Establishment of in house six axes Robot Integration for steel & Aluminum welding with additional external axes & **Material handling with offline programming of Robots** – Resulting into effective utilization of manpower & improved Reliability & on time Delivery.
- **New facilities in progress** - Installation of Roof top Solar power Panels for Green Power generation.
- **New Products in pipeline** - Self Climbing Screen system, Suspended scaffold access system, Heavy Duty Post, Heavy Duty frames for Retaining wall.

SCAFFOLDING SYSTEMS – PRODUCTS



TECHRING



TECHLOK



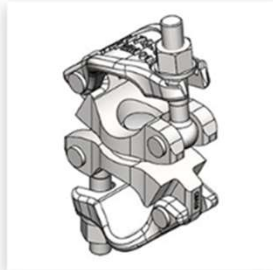
TECH STAGE



MACH PLUS



ACCESS FRAMES



COUPLERS



SHORING PROPS



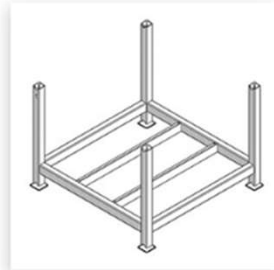
SCAFFOLDING ACCESSORIES



PLANKS AND WALKWAYS

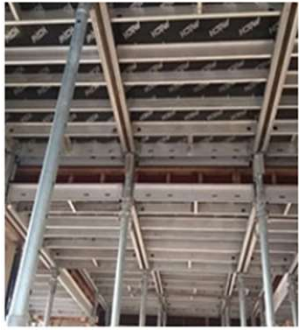


STAIR & LADDER SYSTEM



SYSTEM RACK AND BASKET

SCAFFOLDING SYSTEMS – PRODUCTS



MACH DECK



MACH ONE - MONOLITHIC



MACH INFRA



MACH ALUPLY



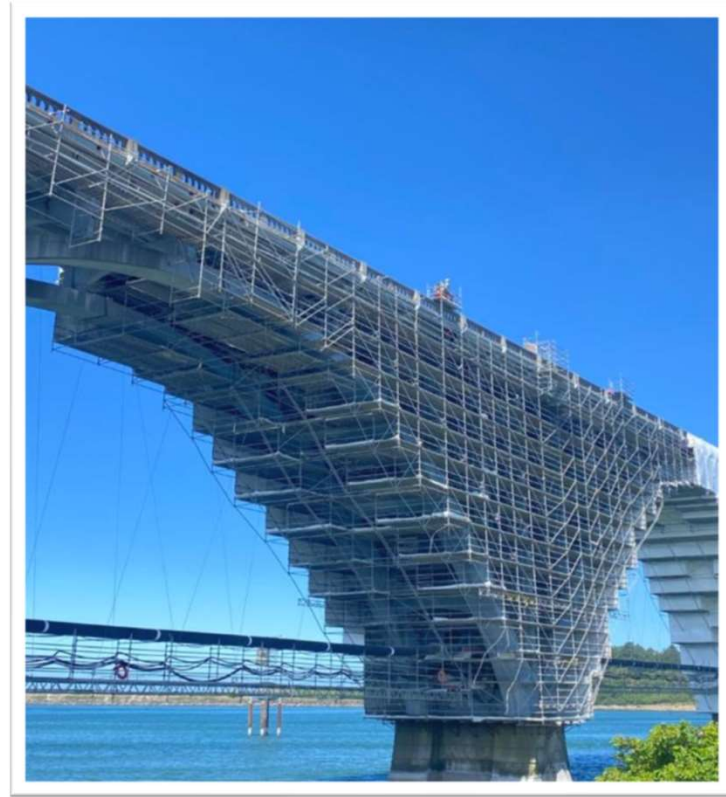
SHORING FRAMES



SPECIAL PROFILES

SCAFFOLDING SYSTEMS – PROJECTS SNAP SHOTS

Ringlock System used for Washington, USA Bridge repair



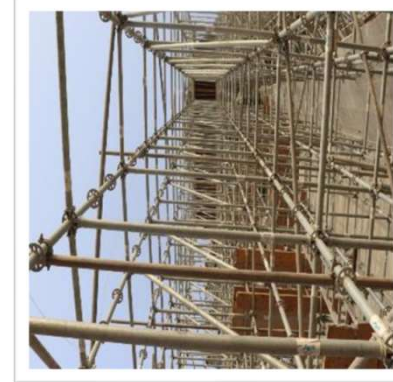
SCAFFOLDING SYSTEMS – PROJECTS SNAP SHOTS

Cuplock and Ringlock System used in Multiple projects at North and South America



SCAFFOLDING SYSTEMS – PROJECTS SNAP SHOTS

Ringlock + Machplus System used for Over head water tank construction at Qatar



SCAFFOLDING SYSTEMS – USE OF LATEST TECHNOLOGY



**Robot welding at
Scaffolding Dept.**

Pick & Place Robot



**Robot at Mach one
(Aluminium Welding)**

TECHNOCRAFT EXTRUSIONS PVT LTD & TECHNOCRAFT FORMWORKS PVT LTD - ARTISTIC VIEW OF FACTORY BUILDING (NEW PROJECT)



Technocraft invests ₹350 cr in Bidkin

Global industrial and construction products manufacturer expands presence

LOKMAT NEWS NETWORK
CHHATRAPATI SAMBHAJINAGAR

Technocraft Group, a renowned global manufacturer of industrial and construction products, has made a significant investment of Rs 350 crore for the establishment of a new manufacturing plant in Bidkin phase of the Delhi-Mumbai Industrial Corridor (DMIC).

The Chamber of Marathwada Industries and Agriculture (CMIA) had pursued this investment. Dignitaries, government officials, CMIA office-bearers, prominent local entrepreneurs, and professionals from the construction sector were present at the event.

Technocraft Group CEO



CEO and director of Technocraft Group Navneet Saraf being felicitated by CMIA's immediate past president Nitin Gupta in the presence of secretary Utsav Machhar, treasurer Atharveshraj Nandawat, and member Vaibhav Malpani during the bhoomipujan programme held in Chhatrapati Sambhajinagar on Monday.

and director Navneet Saraf, vice-president Deepak Mishra, CMIA's immediate past president Nitin Gupta, secretary Utsav Machhar, treasurer Atharveshraj Nandawat, and Vaibhav Malpani were present during the

bhoomi puja programme.

Commercial production to start by March 2024

CEO Saraf said that the new Technocraft plant will be spanning an area of

Efforts made by dignitaries instrumental

Senior CMIA member Rajendra Darda, former president Narendra Gupta, Ravi Machhar, and Nandkishore Kagliwal were instrumental in securing this significant investment for Chhatrapati Sambhajinagar. CMIA president Dushyant Patil expressed his gratitude for support of seniors and highlighted the chamber's commitment to attracting further substantial investments in the region in the future.

3,00,000 square feet in Bidkin. This expansion aligns with the company's strategic objectives of augmenting manufacturing capacity and improving customer service. Construction of the plant is expected to conclude by February 2024, with commercial production slated to commence in March 2024.

SCAFFOLDING SYSTEMS – NEW PROJECT – TECHNOCRAFT EXTRUSIONS PVT LTD

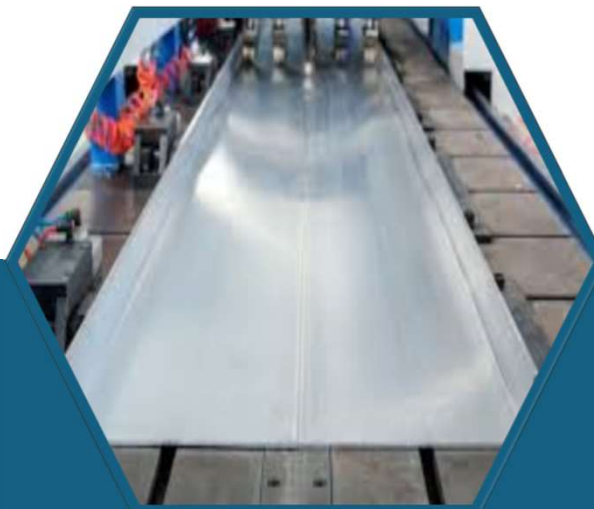
The Company through its wholly owned subsidiary - Technocraft Extrusions Pvt. Ltd. (TEPL) has setup a state of Art Aluminum Extrusion manufacturing unit at Bidkin region of Aurangabad in Maharashtra. TIIL is already having Aluminum Fabrication activity at Murbad (Maharashtra) and Extrusion being an additional activity.

➤ **Capacity: 1500 MT per month**

➤ **Extrusion size: Up to 300mm C channel**

➤ **Extrusion lines: 2 lines - 7" line and 9" line**

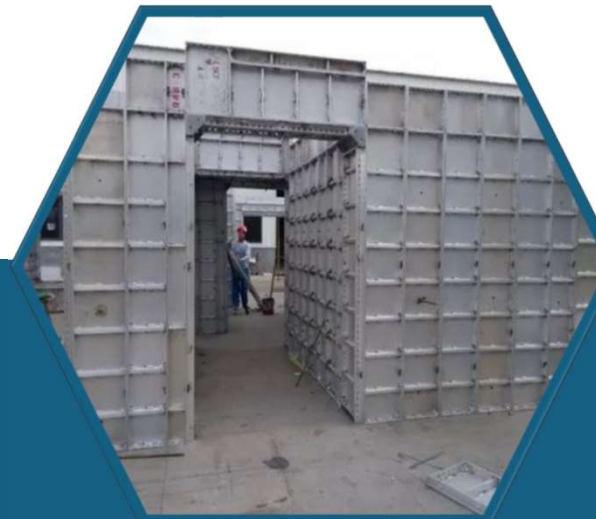
➤ **Ingot manufacturing: In-house**



SCAFFOLDING SYSTEMS – NEW PROJECT – TECHNOCRAFT FORMWORKS PVT LTD

The Company through its wholly owned subsidiary - Technocraft Formworks Pvt. Ltd. (TFPL) has setup a state of Art Aluminum Fabrication and Steel Fabrication manufacturing unit at Bidkin region of Aurangabad in Maharashtra. TIIL is already having Steel Fabrication manufacturing and Aluminum Fabrication activity at Murbad and Shivale (Maharashtra).

- Capacity: 60,000 sqm per month
- Automatic panel welding on Robots
- Conveyor based Auto lacquering line
- ERP driven packaging and dispatch





Mach Deck



Mach One



Pier Head Segment

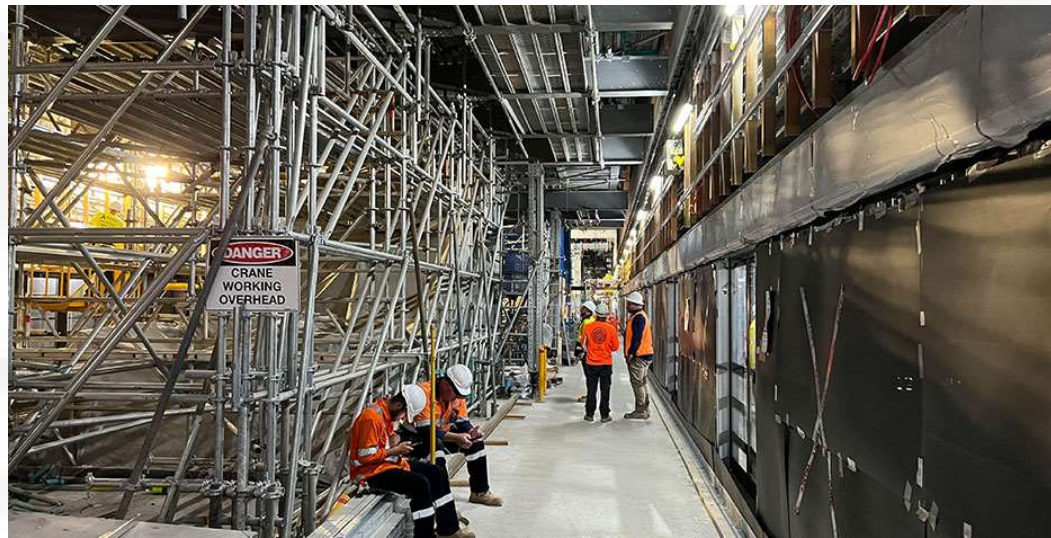


Mach AluPly

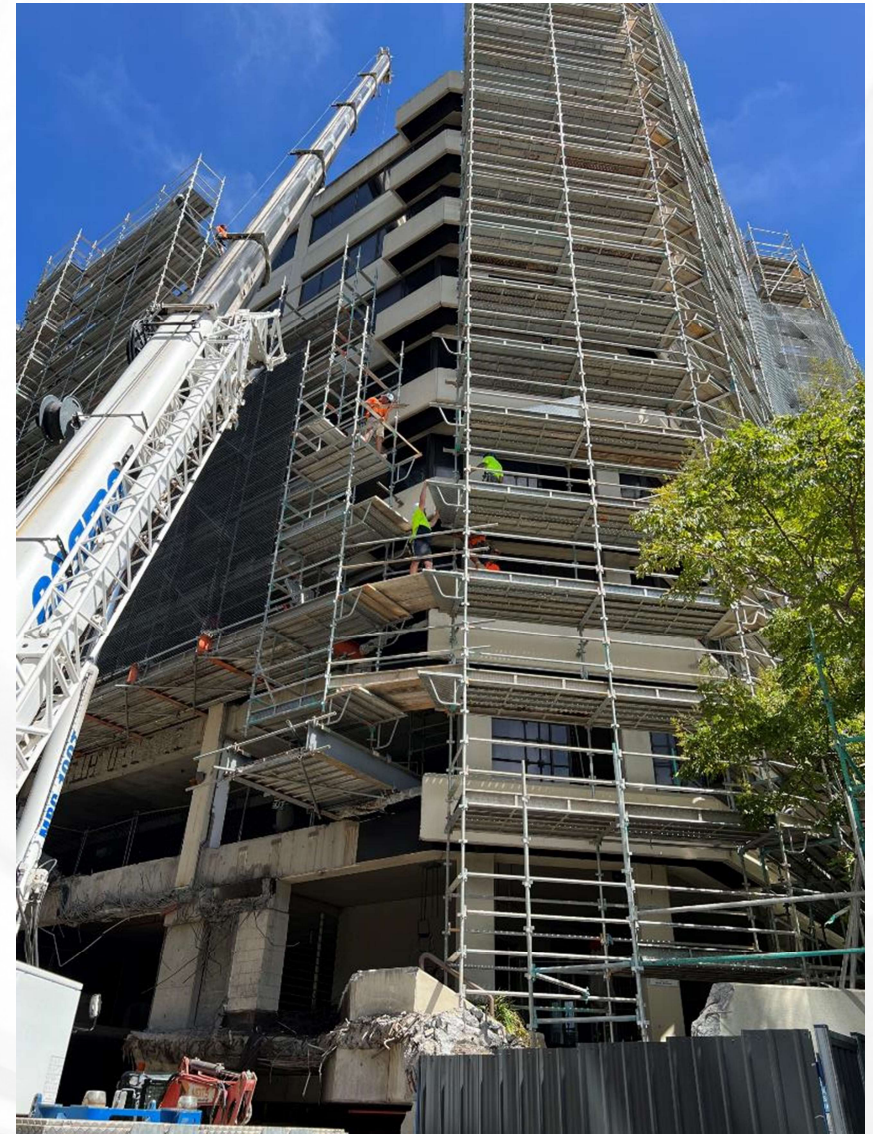




USA : Casino in Oklahoma



Australia : Underground Railway station Project



New Zealand : Building Project

TEXTILE – OVERVIEW

Company has integrated Textile plant for manufacturing Cotton Yarn, Fabric (Greige & Dyed) and Garments in India.

A. Spinning – Cotton Yarn

Company has units for Manufacturing of cotton Greige yarn at Amravati (Maharashtra).

"**TECHNOCRAFT**" is an internationally renowned brand name due to its most consistent and premium quality Yarns. The Company has won number of awards for export excellence, including Best Export Performance by hands of Prime Minister of India.

No of Spindles: 62,000
Capacity: Greige Yarn 14,400 MT/ Annum

B. Knitted Fabric and Dyed Yarn

Company is Manufacturing & Exporting Cotton and Synthetic Blended fabric and Fabric made from Dyed Yarn. Due to in-house spinning, company is able to offer a strategic advantage to its customers in terms of better-quality products at a shorter lead-time.

Capacity: Greige Fabric 8000 MT/ Annum

C. Dyeing & Finishing

Equipped with Fabric dyeing facility with computerized color matching on Data Color Spectrophotometer SF 600 to get accurate 'lab to bulk' matching and consistent dyeing lots continuity.

Capacity: Dyed Fabric 4800 MT/ Annum

D. Garments

Technocraft is one of the premier, wholly integrated manufacturer of premium quality knitwear which makes it one of the leading textile and apparel manufacturer in India. It has two units - one at Amravati (Maharashtra) and another one at Betul (MP).

Capacity at Amravati Unit – 60 Lacs Pcs/ Annum and **Betul (MP) Unit –** 24 Lacs Pcs/ Annum

TEXTILE – PRODUCTS



TEXTILES – NEW PROJECT – TECHNOCRAFT TEXTILES LTD

The Company through its wholly owned subsidiary - Technocraft Textiles Ltd. (TTL) has setup a state of Art cotton Yarn manufacturing unit at Amravati region of Maharashtra. Capacity for the project: Spinning 7300 Tons p.a. from 31,000 spindles

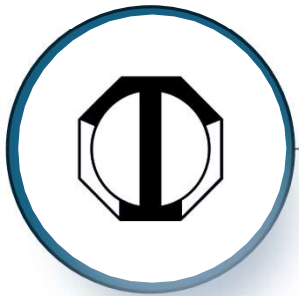
The New Plant at Amravati has locational advantage of nearness to market, low cost of man power and electricity and latest technology.



EXHIBITIONS & CUSTOMER VISIT



TECHNOFT ENGINEERING PROJECTS LTD. – OVERVIEW



Technosoft Engineering Projects Limited is a subsidiary of Technocraft Industries (India) Ltd.



It is a global technology services company offering broad-based engineering, designing and IT services using a variety of client-partnership models for delivery.



It's client base spans various industry verticals including heavy machinery, automotive, aerospace, manufacturing, oil & gas, high-tech, telecom, healthcare and financial services. The client base is widely spread globally including many clients from US, Canada, UK and Germany.



It has a strong team of 800 plus Engineers and designers located worldwide. Its engineers and designers are equipped with state-of-the-art hardware and software tools, including tools for 3-D modeling, Finite Element Analysis and process simulation.



Technosoft Engineering

Innovation ★ Reliability ★ Flexibility

TECHNOSOFT ENGINEERING PROJECTS LTD. – INDUSTRY VERTICALS

Empowering Industries Through Innovative Solutions

Transportation



- Utility Vehicle
- Trucks & Trailers
- Off-Highway
- Agriculture
- Earth Moving
- Construction
- Locomotive
- EV & Micro Mobility
- Small Vehicles

Industrial Products & Machinery



- Machinery
- Test & Measurement Equipment
- White Goods
- Appliances
- Home & Office Products
- Lightings
- Switchgear
- Control Devices
- Electronics
- Robots

Plant Engineering



- CPG
- Pharma
- Chemical
- Oil & Gas
- Food Processing
- Beverages
- Digital Manufacturing
- Water Treatment

Energy



- Energy Management Systems
- Energy Generation
- Transmission, Distribution & Utilities
- Renewable

Hi-Tech



- Semiconductor
- Satellite
- Micro Mobility
- Cyber Security
- AR/VR
- Consumer Electronics

Medical



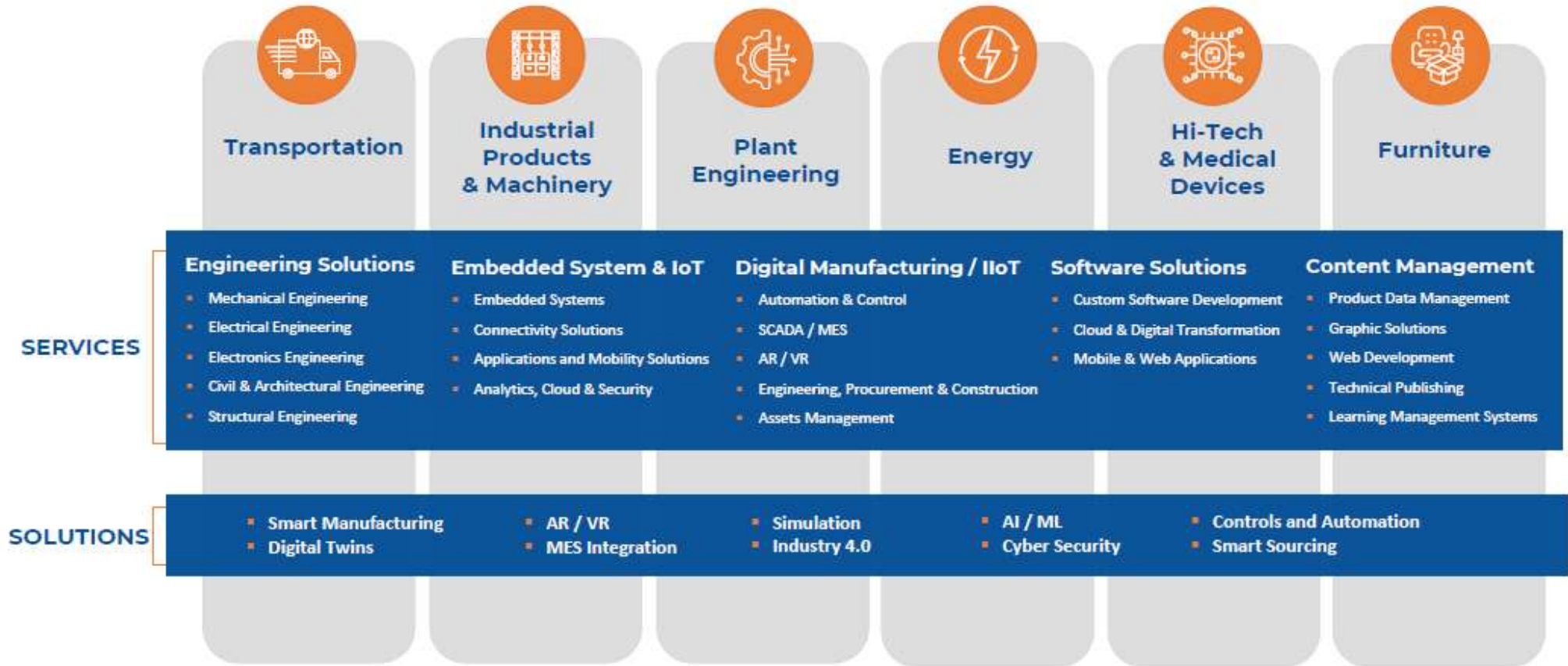
- Wearable Devices
- Hospital Equipment
- Automation Devices

Furniture



- Architecture
- Retail
- Offices & Institutions
- Hospitality
- Material Handling

TECHNOFT ENGINEERING PROJECTS LTD. – INDUSTRY FOCUS



NEW TECHNOLOGY - AI BASED VISUAL DEFECT DETECTION SYSTEM

Development of AI/ML-Based Vision Defect Detection System

Technosoft is developing an advanced AI-powered Visual Defect Detection System designed to revolutionize the inspection process of various parts and products. By leveraging AI algorithms for image processing and deep learning techniques, this system automates quality control in manufacturing, ensuring the detection of defects such as cuts, foreign particles, color deformation, wrinkles, and thickness variations.

The system can employ various types of cameras to continuously capture images of products on a manufacturing line. These images are then sent to a controller, which uses AI algorithms to compare each frame against reference images, detecting any abnormalities. When a defect is identified, the system generates an alert or removes the defective part from the line.

A key feature of this system is its self-learning capability, allowing it to improve its accuracy over time by analyzing more frames.

Technosoft is developing this innovative AI/ML solution in the Technocraft factory, setting a new standard for quality control in manufacturing.

Key Features:

- Advanced Image Processing
- Real-Time Inspection & Feedback
- Comprehensive Analytics
- High-Resolution Imaging
- Seamless Integration
- Adaptability
- Deep Learning Integration
- Enhanced Quality Control
- AI Analysis
- Data-Driven Improvements

EXHIBITIONS – ASOD MEET – SOUTH KOREA, APRIL 24



EXHIBITIONS - CHEMEXPO 2024 IN MUMBAI

Participation in Chemexpo/Chemprotech, 2024 exhibition held in April 24 in Mumbai, showcasing our entire product range of Drum Closures, getting good response from new end users.



CORPORATE SOCIAL RESPONSIBILITY



Shanti Seva Nidhi



Shanti Seva Nidhi (SSN), a public charitable Trust, is a CSR activity of Technocraft.

It was established in 1994 with the view to develop technology in the region and with objectives of running Educational Institutes, providing Medical Assistance, arranging Social and Cultural events, helping and supporting measures for total uplift of Human personality Physical, Mental and Spiritual.

The initiatives span over issues like Education, Skill Development, Water Conservation, Environment Protection, Public Health and Woman and Youth Welfare.

In 2010 SSN tied up with Nettur Technical Training Foundation (NTTF), Bengaluru to bring the esteemed Institute in Maharashtra for the first time and aimed at promoting purposeful Technical Education for the youth of India. With vision and mission to transforming the life of youth, SSN started various programs in Murbad region, which is comparatively a backward region.

It has setup a state of art Technical Education Centre at Murbad Taluka. The campus is 10 acres of lush green landscaped plot with academia, hostels and staff quarters. Apart from the Main Building which is used as Study and Training center for the students, it also has facility of Students' Hostel, Canteen, Staff Quarters, Library, computer lab, workshop hall for practical experience and open area for Sports and recreational activities.

QUALITY, ENVIRONMENT, OCCUPATIONAL HEALTH AND SAFETY MANAGEMENT SYSTEM POLICY

Technocraft Industries (India) Limited understands that even if one piece of drum closure is wrongly employed or bad in one million sets, for the end user, it is going to be one defective assembly that may spill hazardous material at a wrong Time in a wrong place, causing serious problems to ecology and environment. Hence, everyone in Technocraft Industries (India) Limited is committed to manufacture and supply drum closures of 50 mm (2") & 20 mm (3/4") size and its accessories meeting the requirements of end users ensuring their complete satisfaction and other interested parties through

- Motivating, involving, training the people engaged in our various processes
- Controlling the processes
- Fulfilling all applicable legal requirements related to Environment, Occupational Health & Safety, Quality and other requirements
- Protecting environment, preventing pollution due to our activities
- Protecting environment, preventing pollution due to our activities
- Providing safe and healthy workplace by preventing work related injury & ill health
- Consultation & participation of workers in Environment, Occupational Health & safety matters



CONSOLIDATED PROFIT & LOSS STATEMENT – QUARTERLY FINANCIAL RESULTS

Particulars	Amount in INR Lakhs			% Change
	Jul- Sep 24	Apr- Jun 24	Jul- Sep 23	Y-o-Y
Operating Revenue	62,856	62,040	51,990	21%
Other Income	3,528	3,016	1,692	109%
Total Revenue	66,384	65,056	53,682	24%
Cost of Goods Sold	29,131	29,256	23,005	27%
Employee benefits expense	8,590	7,974	7,370	17%
Finance costs	1,389	1,095	974	43%
Depreciation and amortisation expense *	2,512	2,414	1,659	51%
Other expenses	15,472	13,216	11,425	35%
Total Expenses	57,094	53,954	44,433	28%
* Depreciation increased due to commissioning of two plants at Aurangabad and one plant at Amravati.				
Profit Before Tax & Exceptional Item	9,291	11,102	9,248	0.5%
Profit Before Tax & Exceptional Item as a % of Operating Revenue	15%	18%	18%	
EBITDA (before Exceptional Items)	13,192	14,611	11,881	11%
EBITDA as a % of Operating Revenue	21%	24%	23%	

CONSOLIDATED PROFIT & LOSS STATEMENT – TTM

Particulars	Amount in INR Lakhs		%
	Oct 23 - Sep 24	Oct 22 - Sep 23	Change
Operating Revenue	2,35,419	2,04,591	15%
Other Income	12,403	6,544	90%
Total Revenue	2,47,822	2,11,135	17%
Cost of Goods Sold	1,10,877	85,109	30%
Employee benefits expense	31,328	24,486	28%
Finance costs	4,337	3,688	18%
Depreciation and amortisation expense	8,472	6,572	29%
Other expenses	55,350	51,943	7%
Total Expenses	2,10,365	1,71,797	22%
Profit Before Tax & Exceptional Item	37,457	39,338	-5%
Profit Before Tax & Exceptional Item as a % of Operating Revenue	16%	19%	
EBITDA	50,267	49,598	1%
EBITDA % of Operating Revenue	21%	24%	

RATIOS

Ratios	TTM Oct 23 – Sep 24	TTM Oct 22 – Sep 23	July - Sep 24	July - Sep 23
Operating Margin	18%	21%	17%	20%
Net Profit Margin	12%	15%	11%	13%
Debt Equity Ratio	0.44 Times	0.42 Times	0.44 Times	0.42 Times
Current Ratio	1.80 Times	1.91 Times	1.80 Times	1.91 Times
Debtors (INR Lacs)	50,060	47,973	50,060	47,973
Debtors Days	78 Days	86 Days	72 Days	84 Days
Inventory (INR Lacs)	71,204	75,532	71,204	75,532
Inventory Days	110 Days	135 Days	103 Days	132 Days
Capital Employed (INR Lacs)	1,88,381	1,70,199	1,88,381	1,70,199
ROCE %	22%	25%	23%	24%

CONSOLIDATED SEGMENTAL ANALYSIS – REVENUE (QUARTERLY)

Income from continued operations	Amount in INR Lakhs			% Change Y-o-Y
	Jul- Sep 24	Apr- Jun 24	Jul- Sep 23	
Drum Closure Division	15,726	15,098	13,670	15%
Scaffoldings Division	29,928	33,408	23,495	27%
Textiles Division	13,964	10,420	11,927	17%
Engineering & Designing Services	5,166	4,973	5,242	-1%
Others	-	-	-	
Sub - Total	64,784	63,900	54,333	19%
Less: Inter Unit	-1,928	-1,859	-2,343	
Total	62,856	62,040	51,990	21%

CONSOLIDATED SEGMENTAL ANALYSIS: EBIT (QUARTERLY)

Segment Results	Amount in INR Lakhs			%
	Jul- Sep 24	Apr- Jun 24	Jul- Sep 23	Change
Profit/(Loss) after Depreciation but Before Finance Cost and Tax				Y-o-Y
Drum Closure Division	5,624	5,571	4,811	17%
Scaffoldings Division	3,913	5,301	4,548	-14%
Textiles Division	-1298	-1237	-909	43%
Engineering & Designing Services	837	850	1258	-33%
Others	1	-1	9.27	
Total	9,077	10,485	9,718	-7%

CONSOLIDATED SEGMENTAL ANALYSIS: REVENUE (TTM)

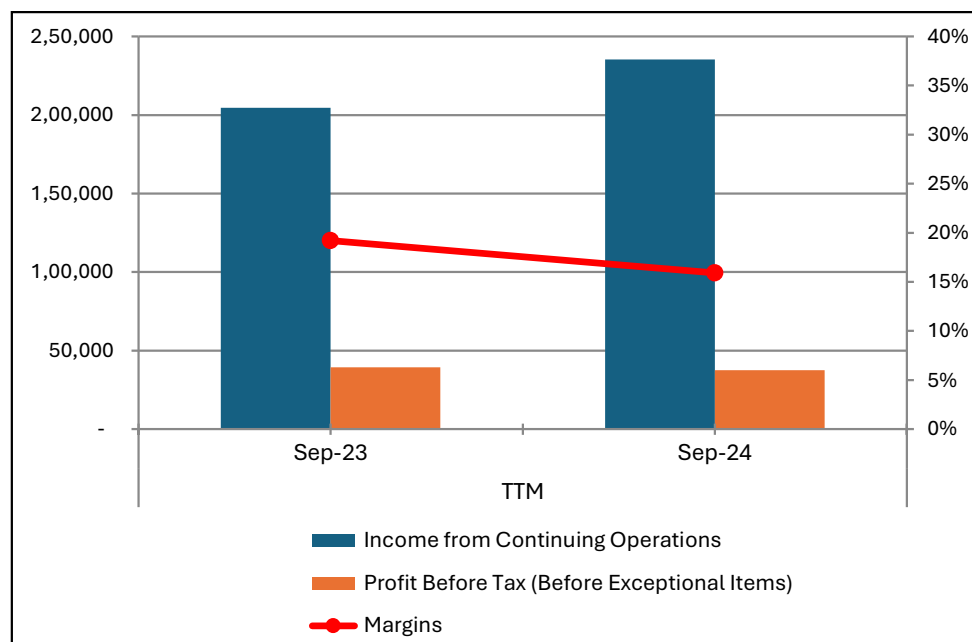
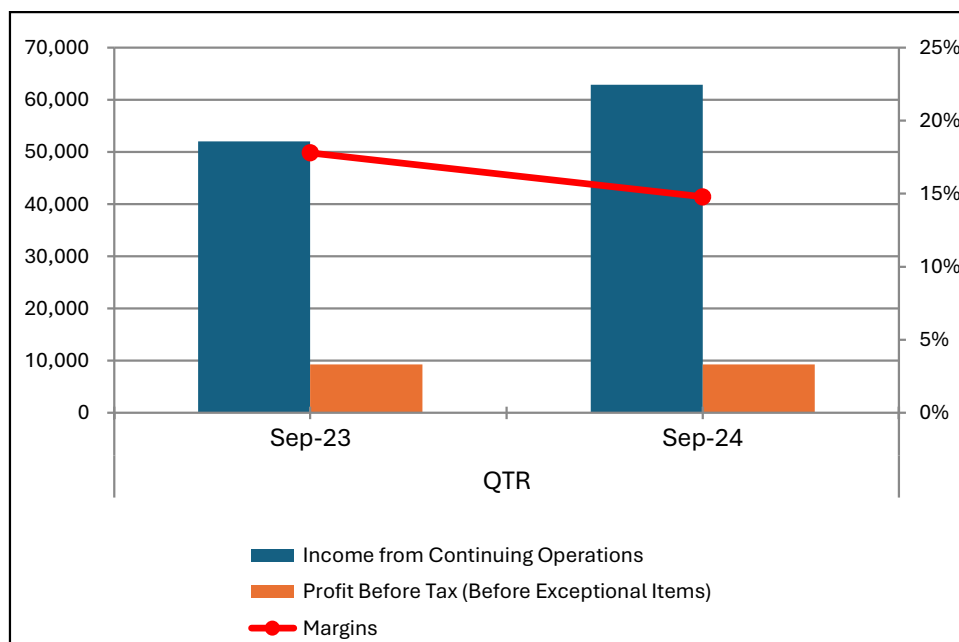
Income from continued operations	Amount in INR Lakhs		%
	Oct 23 - Sep 24	Oct 22- Sep 23	Change
Drum Closure Division	58,675	50,682	16%
Scaffoldings Division	1,15,677	96,460	20%
Textiles Division	47,698	48,844	-2%
Engineering & Designing Services	20,534	16,698	23%
Others	-	22	
Sub - Total	2,42,584	2,12,684	14%
Less: Inter Unit	-7,166	-8,115	
Total	2,35,419	2,04,591	15%

CONSOLIDATED SEGMENTAL ANALYSIS: EBIT (TTM)

Segment Results Profit/(Loss) after Depreciation but Before Finance Cost, Tax	Amount in INR Lakhs		% Change
	Oct 23 - Sep 24	Oct 22- Sep 23	
Drum Closure Division	20,919	16,155	29%
Scaffoldings Division	15,335	24,961	-39%
Textiles Division	-2,863	-3,254	-12%
Engineering & Designing Services	3,281	3,527	-7%
Others	-20	-40	
Total	36,652	41,349	-11%

CONSOLIDATED FINANCIALS REVENUE, PBT & MARGIN

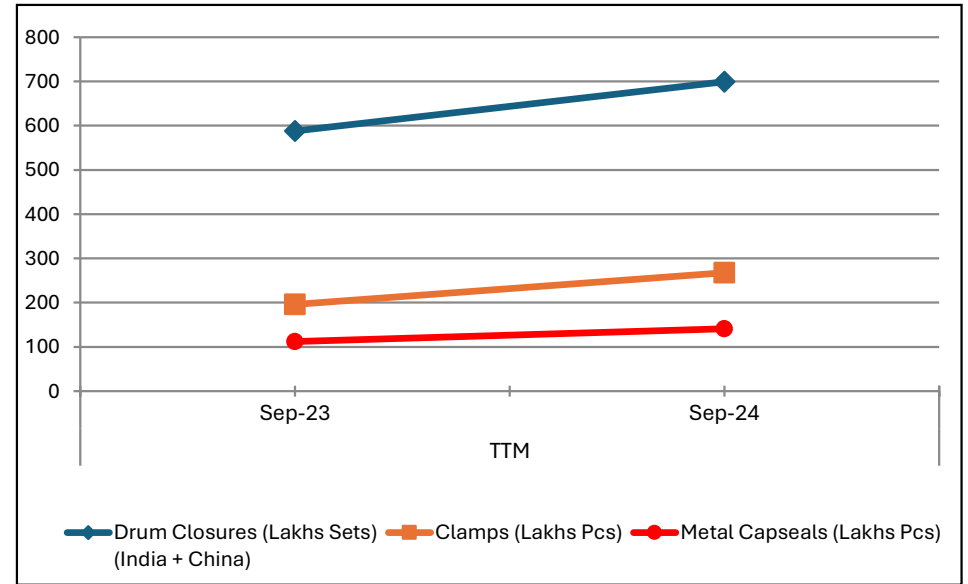
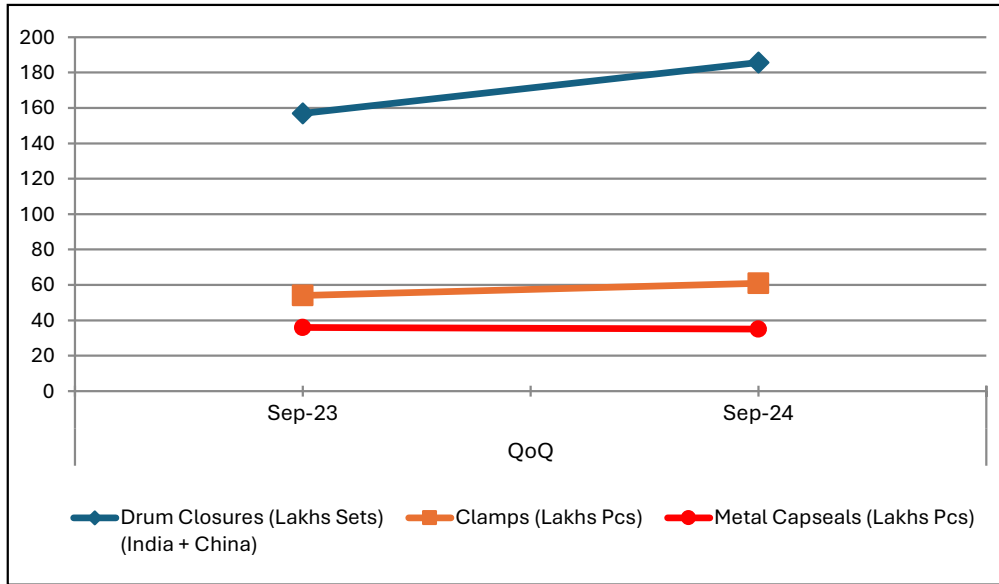
Particulars	Amount in INR Lakhs			
	YoY		TTM	
	Sep-23	Sep-24	Sep-23	Sep-24
Income from Continuing Operations	51,990	62,856	2,04,591	2,35,419
Profit Before Tax (Before Exceptional Items)	9,248	9,291	39,338	37,457
Margins	18%	15%	19%	16%



DRUM CLOSURES BUSINESS – VOLUME

Sales Volume	YoY	
	Sep-23	Sep-24
Drum Closures (Lakhs Sets) (India + China)	157	186
Clamps (Lakhs Pcs)	54	61
Metal Capseals (Lakhs Pcs)	36	35

Sales Volume	TTM	
	Sep-23	Sep-24
Drum Closures (Lakhs Sets) (India + China)	588	699
Clamps (Lakhs Pcs)	196	267
Metal Capseals (Lakhs Pcs)	112	141

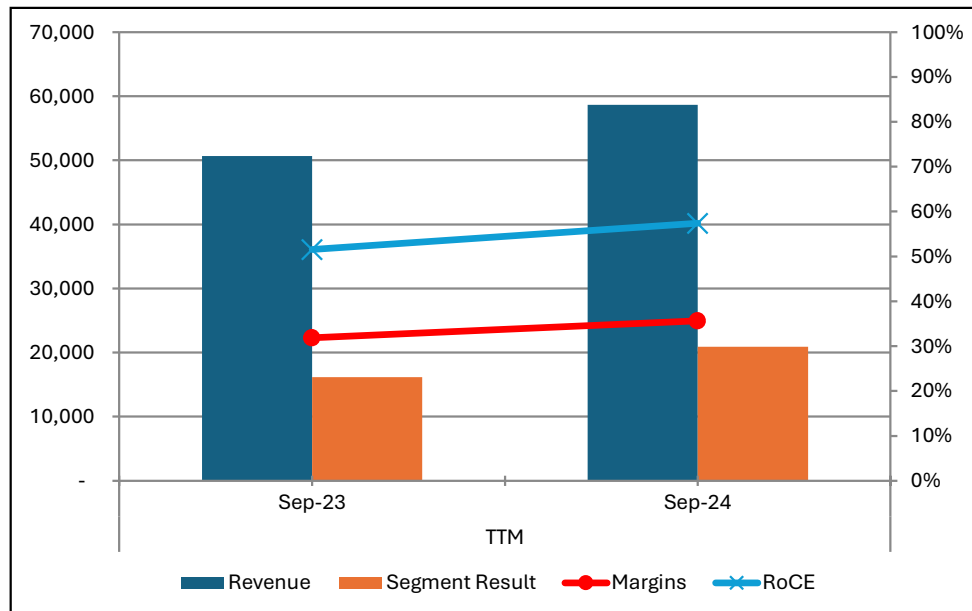
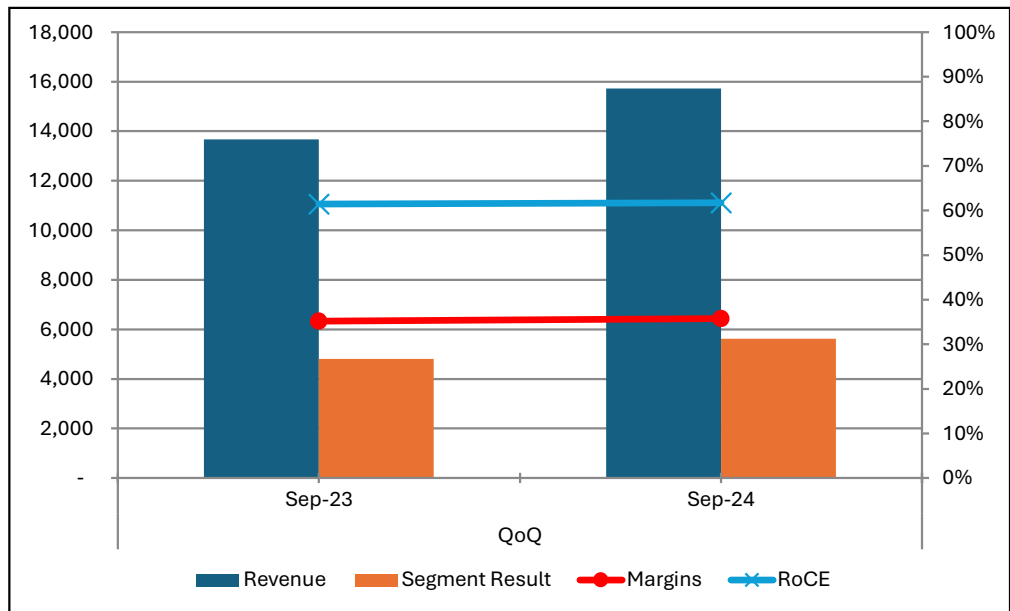


DRUM CLOSURES BUSINESS – FINANCIALS

INR Lakhs

Consolidated Financials%	YoY	
	Sep-23	Sep-24
Revenue	13,670	15,726
Segment Result - EBIT	4,811	5,624
Margins	35%	36%
RoCE	61%	62%

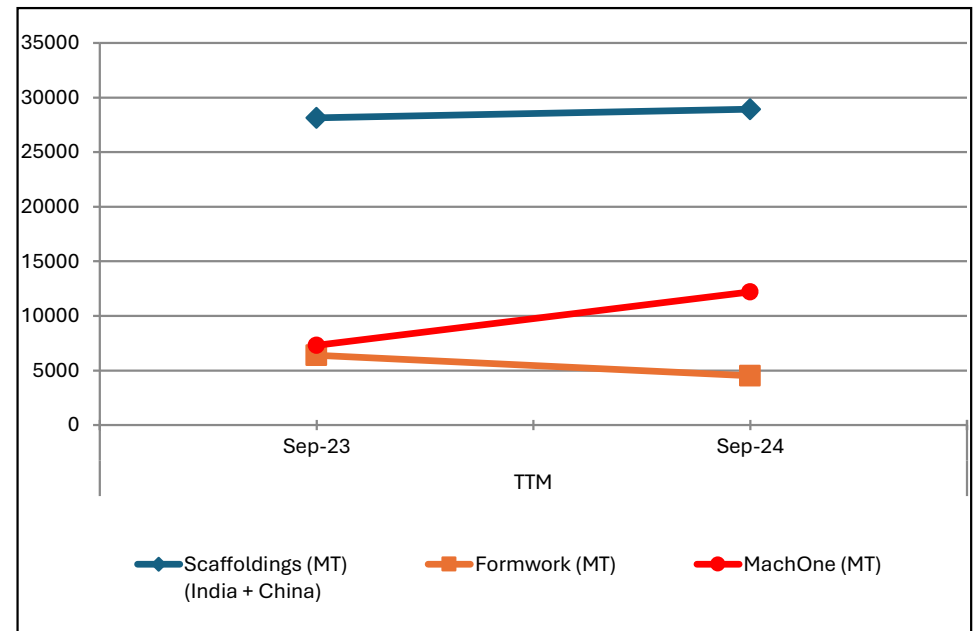
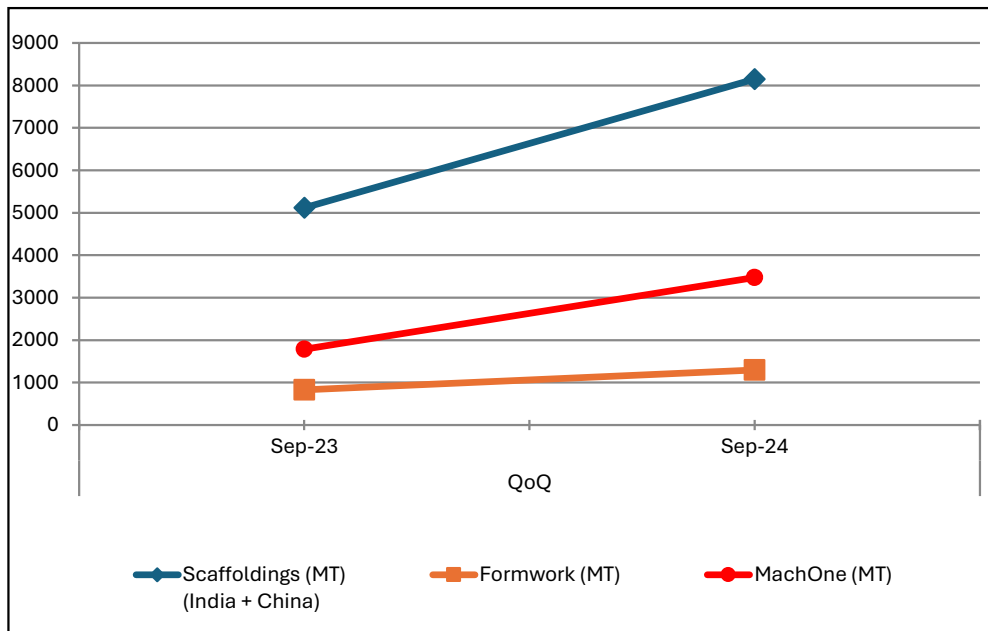
Consolidated Financials	TTM	
	Sep-23	Sep-24
Revenue	50,682	58,675
Segment Result - EBIT	16,155	20,919
Margins	32%	36%
RoCE	52%	57%



SCAFFOLDINGS & FORMWORKS BUSINESS – VOLUME

Sales Volume	YoY	
	Sep-23	Sep-24
Scaffoldings (MT)	5,120	8,151
Formwork (MT)	829	1296
MachOne (MT)	1,791	3,479

Sales Volume	TTM	
	Sep-23	Sep-24
Scaffoldings (MT)	28,150	28,954
Formwork (MT)	6,392	4,528
MachOne (MT)	7,303	12,194

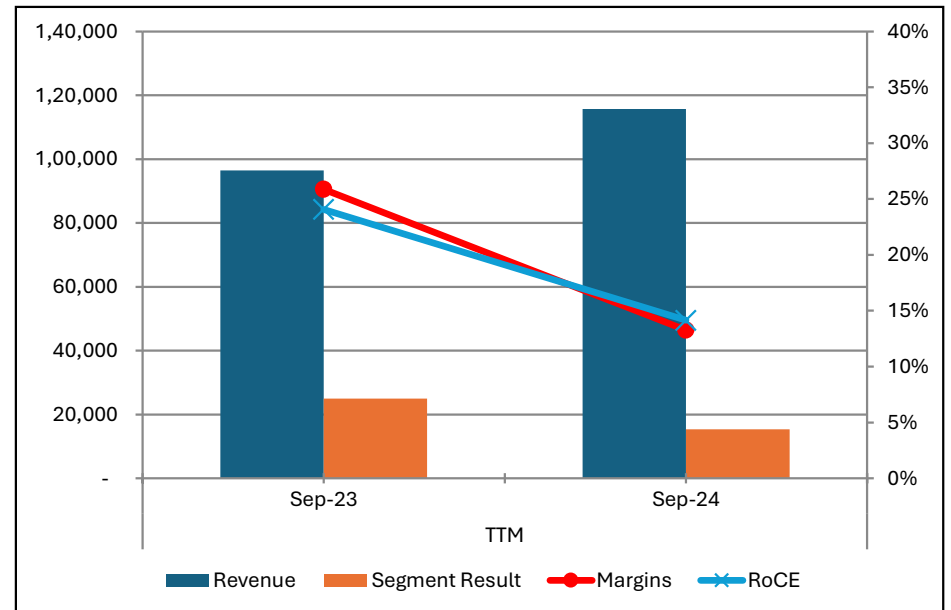
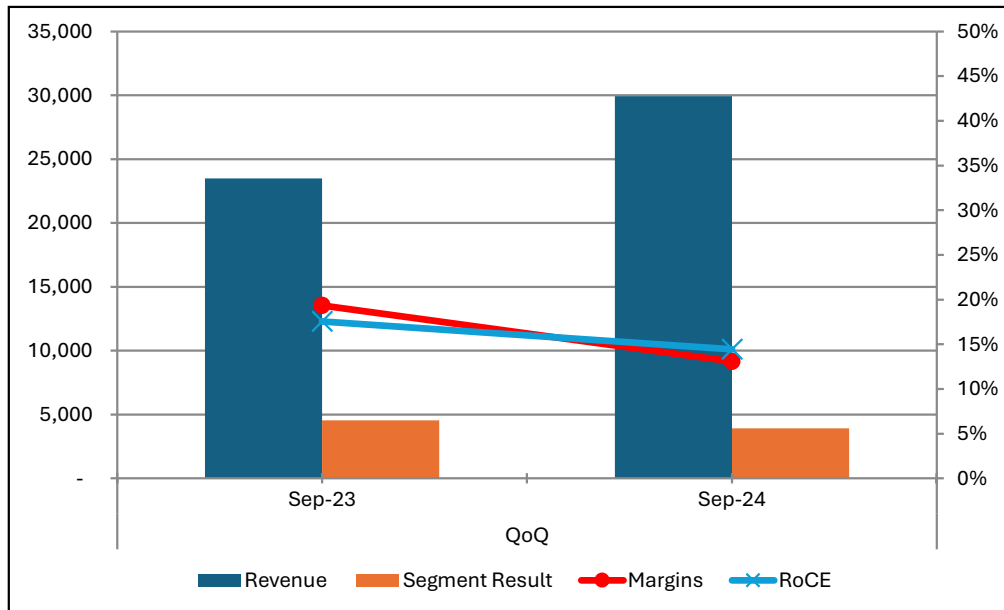


SCAFFOLDINGS & FORMWORK BUSINESS – FINANCIALS

INR Lakhs

Consolidated Financials	YoY	
	Sep-23	Sep-24
Revenue	23,495	29,928
Segment Result - EBIT	4,548	3,913
Margins	19%	13%
RoCE	18%	14%

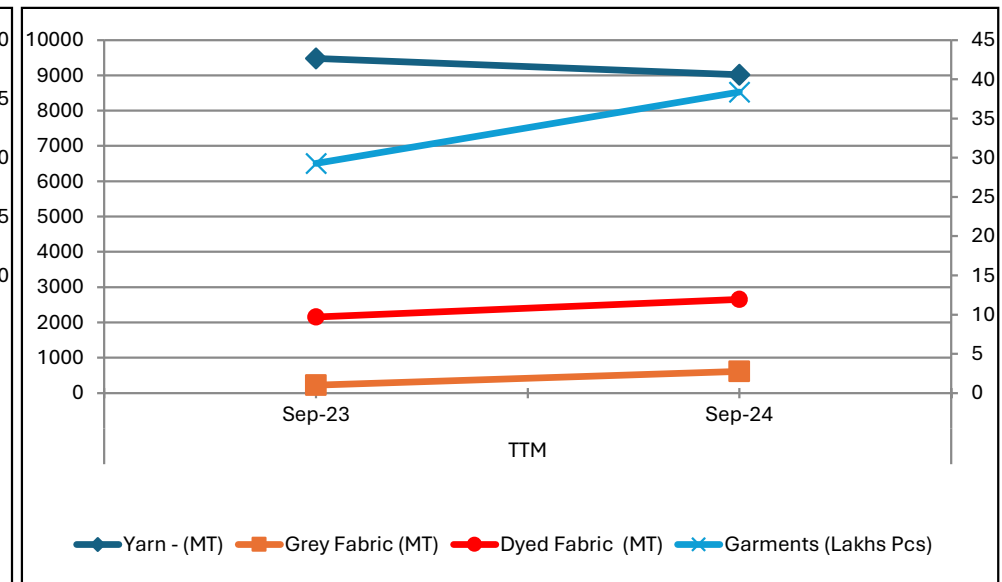
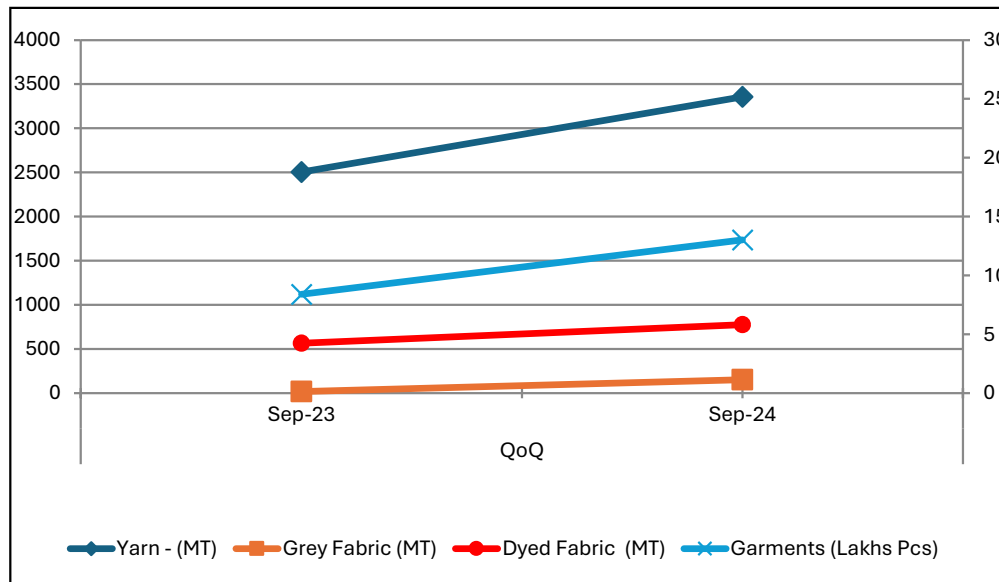
Consolidated Financials	TTM	
	Sep-23	Sep-24
Revenue	96,460	1,15,677
Segment Result - EBIT	24,961	15,335
Margins	26%	13%
RoCE	24%	14%



TEXTILE BUSINESS – VOLUME

Sales Volume	YoY	
	Sep-23	Sep-24
Yarn - (MT)	2503	3356
Grey Fabric (MT)	19	150
Dyed Fabric (MT)	566	776
Garments (Lakhs Pcs)	8	13

Sales Volume	TTM	
	Sep-23	Sep-24
Yarn - (MT)	9479	9017
Grey Fabric (MT)	227	618
Dyed Fabric (MT)	2155	2656
Garments (Lakhs Pcs)	29	38

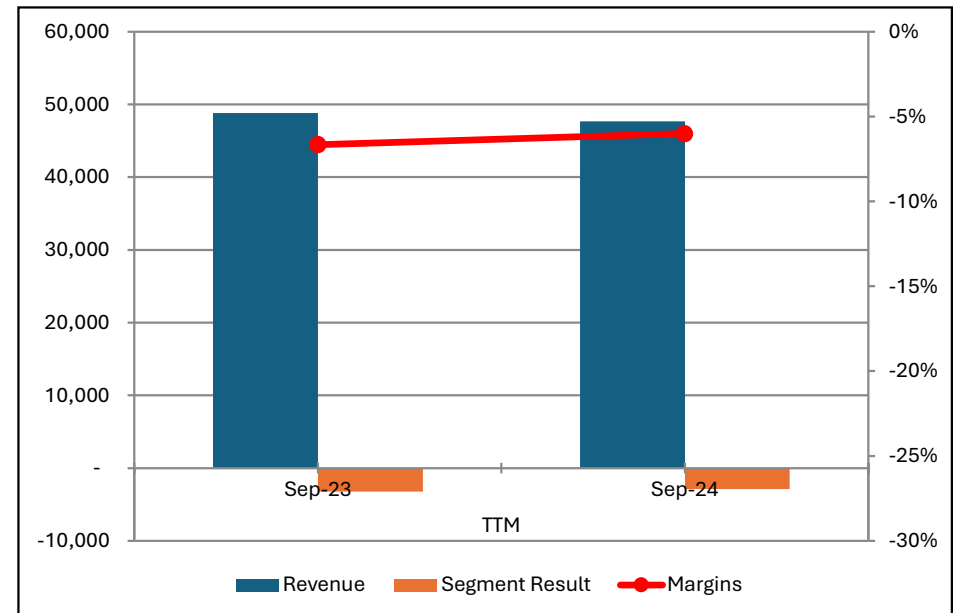
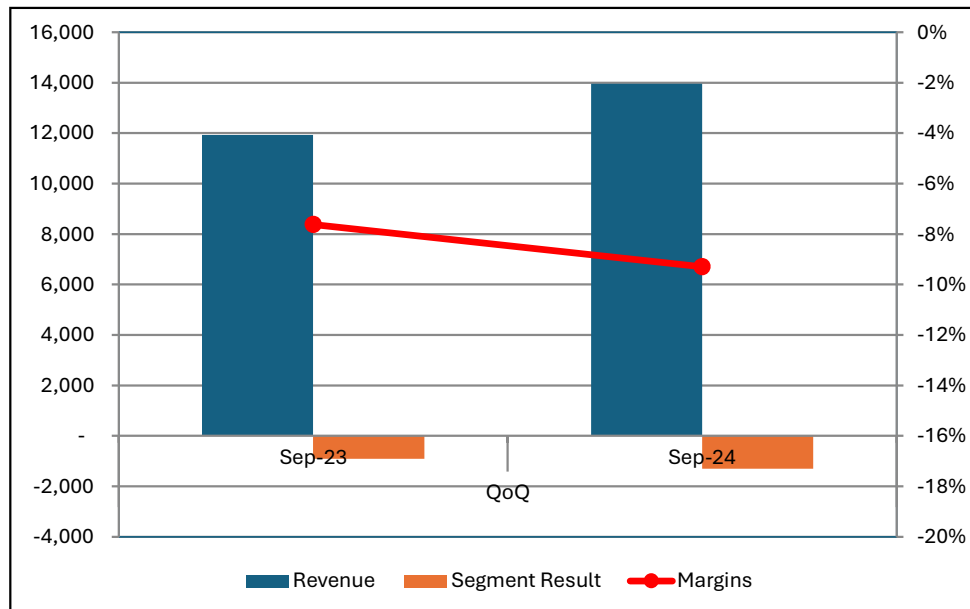


TEXTILE BUSINESS – FINANCIALS

Consolidated Financials	YoY	
	Sep-23	Sep-24
Revenue	11,927	13,964
Segment Result - EBIT	-909	-1298
Margins	-8%	-9%

INR Lakhs

Consolidated Financials	TTM	
	Sep-23	Sep-24
Revenue	48,844	47,698
Segment Result - EBIT	-3254	-2863
Margins	-7%	-6%

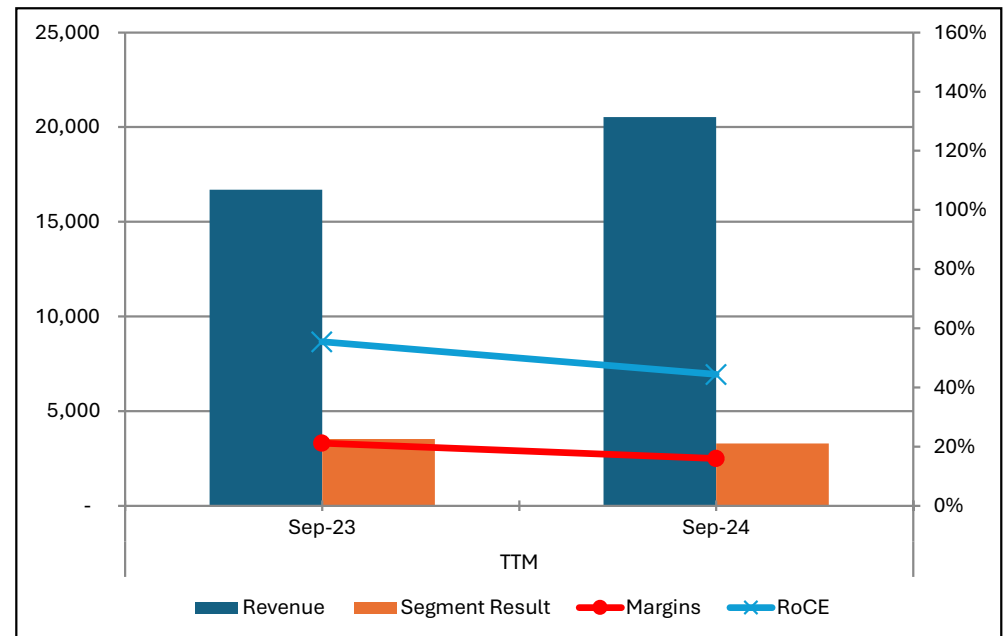
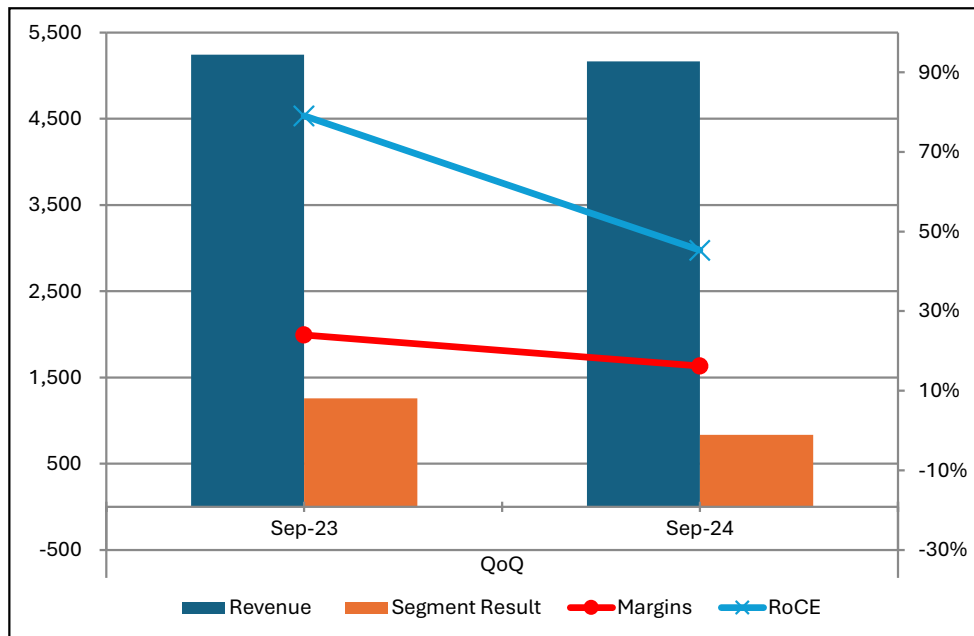


ENGINEERING & DESIGNING SERVICES – FINANCIALS

INR Lakhs

Consolidated Financials	YoY	
	Sep-23	Sep-24
Revenue	5,242	5,166
Segment Result - EBIT	1,258	837
Margins	24%	16%
RoCE	79%	45%

Consolidated Financials	TTM	
	Sep-23	Sep-24
Revenue	16,698	20,354
Segment Result - EBIT	3,527	3,281
Margin	21%	16%
RoCE	55%	44%



DRUM CLOSURES – SEGMENT OUTLOOK

- Revenue from Operations increased from ₹ 137 Crores to ₹ 158 Crores in Q2 on YoY basis. EBIT increased by 17% from ₹ 48 crores to ₹ 56 crores, supported by margin improvement and continuous process improvement.
- In-spite of disturbances caused by global geo-political disturbances, the Revenue as well as EBIT have increased by about 15% and 17% respectively in Q2 on YoY basis. Company continues to be optimistic on this business, which gives regular cash profit and also hopes for improved performance going forward.
- No major capex is planned for this division other than maintenance capex in near future.



SCAFFOLDINGS & FORMWORKS – SEGMENT OUTLOOK

- Revenue from Operations increased from ₹ 235 Crores to ₹ 299 Crores in Q2 on YoY basis. However, EBIT reduced from ₹ 45 Crores to ₹ 39 Crores.
- Scaffolding business's EBIT is reduced in Q2 on YoY Basis, due to pressure on margins caused by geo-political disturbances, slow-down in USA and Europe. Company is optimistic on this business and feels that this is not a permanent feature.
- Company is confident of strong prospects of this division due to anticipated growth in infrastructure and affordable housing construction demand in India as well as globally.
- The company's Aluminum Extrusion and Fabrication plant in Aurangabad to manufacture 17,500 MT p.a. of Aluminum Extrusion and 6,00,000 Sq. mts. p.a. of Aluminum Fabrication has commenced production in March 2024 which will be ramped up over a period of time in FY25.



TEXTILE – SEGMENT OUTLOOK

- Revenue from Operations of Textile (Fabric, Garment and Yarn) Division increased from ₹ 119 Crores to ₹ 140 Crores in Q2 on YOY Basis despite challenging environment in Textile Segment.
- The Textile segment of the Company has been observing pressure from market forces from quite some time. Demand of finished products in both domestic & International markets had come down which has affected overall performance of the division.
- Amravati Spinning plants of the Company continue to give reasonable cash profit in spite of adverse market conditions. Company expects to generate cash profit from this unit as well going forward.
- Company is hopeful that market condition for Cotton Yarn, Fabric and Garments will improve in future.



ENGINEERING DESIGNING SERVICES – SEGMENT OUTLOOK

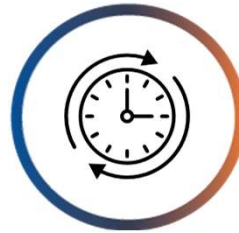
- Revenue from Operations remains constant at ₹ 52 Crores Q2 on YOY Basis. EBIT have reduced from ₹12 Crores to ₹ 8 Crores mainly due to additional cost incurred on operational as well as marketing resources and expenses related there to for tapping new markets and growth, results of which will be seen in the coming quarters.
- Engineering Division of the Company has been growing steadily & the same is expected to continue.
- Going forward, Company expects the demand for its services in this division to significantly increase due to strong acceptance of company's offshore global delivery model.



CREDIT RATING



**Total Bank Loan
Facilities Rated :
Rs. 976 crore**

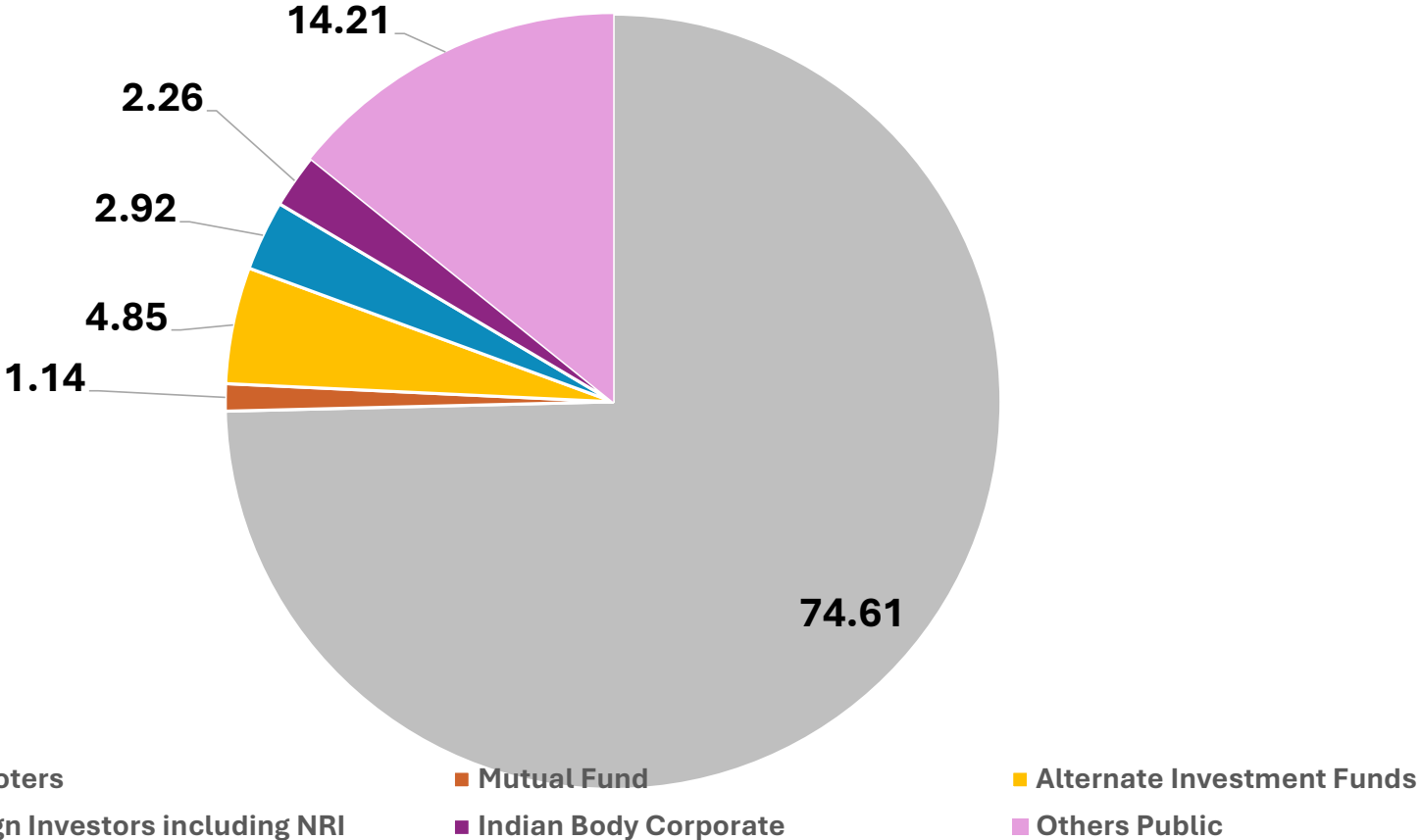


**Long Term Rating :
CRISIL AA-/ Stable**

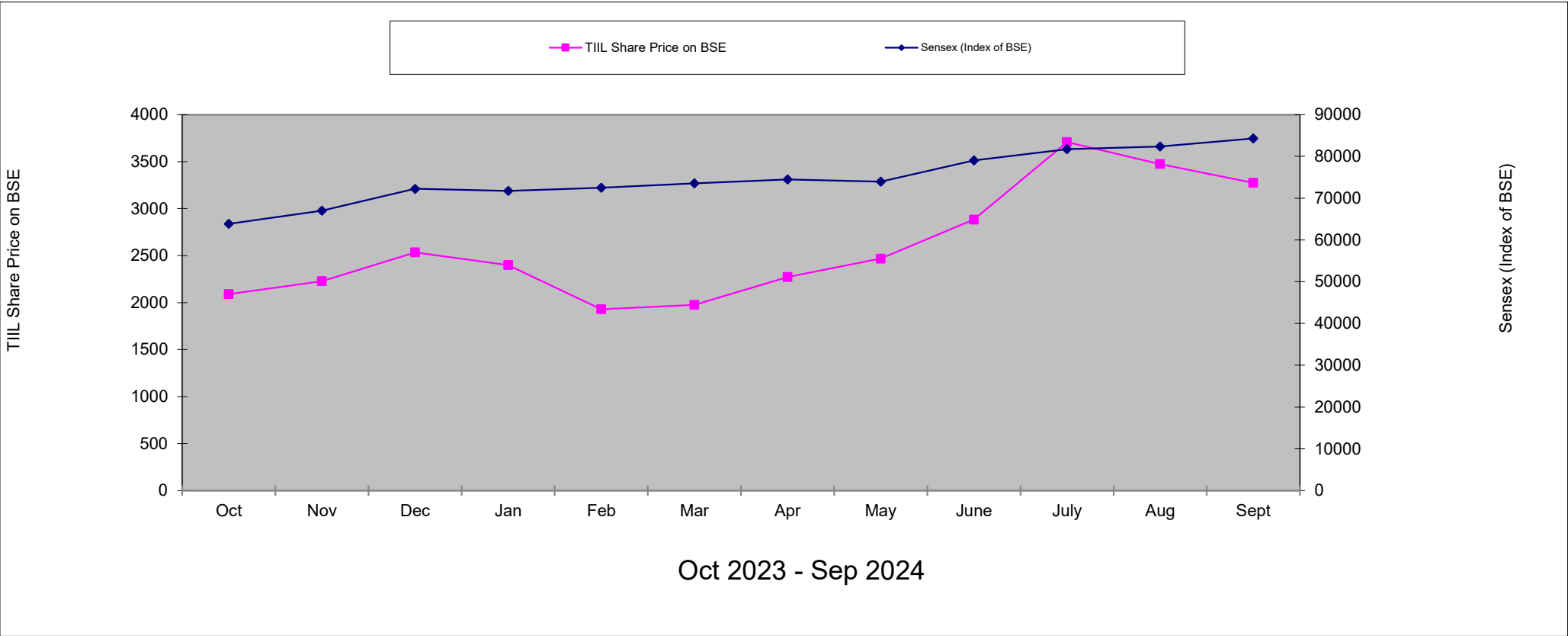


**Short Term Rating :
CRISIL A1+**

SHAREHOLDING & EQUITY STRUCTURE (as on 30.09.2024)



SHARE PRICE ON BSE



THANK YOU

For any clarifications, pls contact:

Mr. Anil Gadodia. Head – Finance. **anil.gadodia@technocraftgroup.com**