

14th May, 2024

National Stock Exchange of India Limited

Exchange Plaza, 5th Floor,
Plot No. C/1, G Block,
Bandra Kurla Complex,
Bandra (East), Mumbai - 400 051
Fax: 022-26598237/38

BSE Limited

Corporate Relationship Department
1st Floor, New Trading Ring,
PJ Towers, Dalal Street,
Fort, Mumbai - 400 001
Fax: 022-22723121/1278

Company Code: PVRINOX/532689

Sub: Quarter 4 & 12 Month FY 24– Investor Presentation

Dear Sir / Madam,

Please find attached presentation on Investor update for 04th quarter and 12 Month financial year 2023-24.

This is for your information and records.

Thanking You.

Yours faithfully,

For PVR INOX Limited

Mukesh Kumar
SVP - Company Secretary
& Compliance Officer

Encl: A/a

PVR INOX LIMITED (Formerly known as PVR Limited)



PVR INOX

MAY 14th, 2024

**INVESTOR UPDATE :
Q4 & 12M FY'24**

This presentation has been prepared for general information purposes in respect of PVR INOX Limited (“Company”) together with its subsidiaries and joint venture (together, with the “Company”, the “Group”) only, without regard to any specific objectives, suitability, financial situations and needs of any particular person and does not constitute any recommendation or form part of any offer or invitation, directly or indirectly, in any manner, or inducement to sell or issue, or any solicitation of any offer to purchase or subscribe for, any securities of the Company in any jurisdiction, nor shall it or any part of it or the fact of its distribution form the basis of, or be relied on in connection with, any contract or commitment therefor. This presentation does not solicit any action based on the material contained herein. Nothing in this presentation is intended by the Group to be construed as legal, accounting or tax advice.

This presentation has not been approved and will not or may not be reviewed or approved by any statutory or regulatory authority in India or by any Stock Exchange in India.

This presentation contains certain forward-looking statements relating to the business, financial performance, strategy and results of the Group and/ or the industry in which it operates. Forward-looking statements are statements concerning future circumstances and results, and any other statements that are not historical facts, sometimes identified by the words including, without limitation “believes”, “expects”, “predicts”, “intends”, “projects”, “plans”, “estimates”, “aims”, “foresees”, “anticipates”, “targets”, and similar expressions. The forward-looking statements, including those cited from third party sources, contained in this presentation are based on numerous assumptions and are uncertain and subject to risks. A multitude of factors including, but not limited to, changes in demand, competition and technology, can cause actual events, performance or results to differ significantly from any anticipated development. Neither the Group nor its affiliates or advisors or representatives nor any of its or their parent or subsidiary undertakings or any such person's officers or employees guarantees that the assumptions underlying such forward-looking statements are free from errors nor does either accept any responsibility for the future accuracy of the forward-looking statements contained in this presentation or the actual occurrence of the forecasted developments. Forward-looking statements speak only as of the date of this presentation and are not guarantees of future performance. As a result, the Group expressly disclaims any obligation or undertaking to release any update or revisions to any forward-looking statements in this presentation as a result of any change in expectations or any change in events, conditions, assumptions or circumstances on which these forward looking statements are based. Given these uncertainties and other factors, viewers of this presentation are cautioned not to place undue reliance on these forward-looking statements. Certain numbers in these presentations and materials have been subject to routine rounding off and accordingly figures shown as total in tables and diagrams may not be an arithmetic aggregation of the figures that precede them.

The information contained in these presentations and materials are only current as of the dates specified herein and have not been independently verified. None of the Group, its directors, promoters or affiliates, nor any of its or their respective employees, advisers or representatives or any other person accepts any responsibility or liability whatsoever, whether arising in tort, contract or otherwise, for any errors, omissions or inaccuracies in such information or opinions or for any loss, cost or damage suffered or incurred howsoever arising, directly or indirectly, from any use of this presentation or its contents or otherwise in connection with this presentation, and makes no representation or warranty, express or implied, for the contents of this presentation including its accuracy, fairness, completeness or verification or for any other statement made or purported to be made by any of them, or on behalf of them, and nothing in this presentation or at this presentation shall be relied upon as a promise or representation in this respect, whether as to the past or the future. Past performance is not a guide for future performance. The information contained in this presentation is current, and if not stated otherwise, made as of the date of this presentation. The Group undertakes no obligation to update or revise any information in this presentation as a result of new information, future events or otherwise. Any person/ party intending to provide finance/ invest in the shares/ businesses of the Group shall do so after seeking their own professional advice and after carrying out their own due diligence procedure to ensure that they are making an informed decision.

This presentation is not a prospectus, a statement in lieu of a prospectus, an offering circular, an advertisement or an offer document under the Companies Act, 2013, as amended, the Securities and Exchange Board of India (Issue of Capital and Disclosure Requirements) Regulations, 2018, as amended, or any other applicable law in India.

This presentation is strictly confidential and may not be copied or disseminated, reproduced, re-circulated, re-distributed, published or advertised in any media, website or otherwise, in whole or in part, and in any manner or for any purpose. Any unauthorized use, disclosure or public dissemination of information contained herein is prohibited. No person is authorized to give any information or to make any representation not contained in or inconsistent with this presentation and if given or made, such information or representation must not be relied upon as having been authorized by any person. Failure to comply with this restriction may constitute a violation of the applicable securities laws. Accordingly, any persons in possession of the aforesaid should inform themselves about and observe any such restrictions. By reviewing this presentation, you agree to be bound by the foregoing limitations. You may not repackage or sell the presentation. Information contained in a presentation hosted or promoted by the Group is provided “as is” without warranty of any kind, either expressed or implied, including any warranty of fitness for a particular purpose.

By accessing this presentation, you accept this disclaimer and any claims arising out of or in connection with this presentation shall be governed by the laws of India and only the courts in Gurugram, India, and no other courts shall have jurisdiction over the same.

Particulars	Slide No.
Key Highlights	6
Box Office Update	8
Result Summary	10
Progress on Merger Synergy	16
Key Strategic Priorities	24
Growth Update	27
Content Pipeline	29

- PVR INOX merger became effective from 6th February 2023 vide order of NCLT Mumbai.
- For a like to like comparison of 12M FY'24 financials, previous year numbers are being presented on a Proforma basis for PVR + INOX.
- Previous period figures have been regrouped and rearranged wherever necessary.
- All financials are presented after excluding the impact of IndAS-116 - 'Leases'.

Key Financial Highlights

(in INR Mn)

TOTAL INCOME

EBITDA &

EBITDA MARGIN

PAT

Q4, FY'24

Q4, FY'23

12,904
11,647 (+11%)

352 2.7%
269 2.3% (+31%)

-901
-2,857

12M, FY'24

12M, FY'23 (1)

62,037
53,105 (+17%)

8,087 13.0%
6,093 11.5% (+33%)

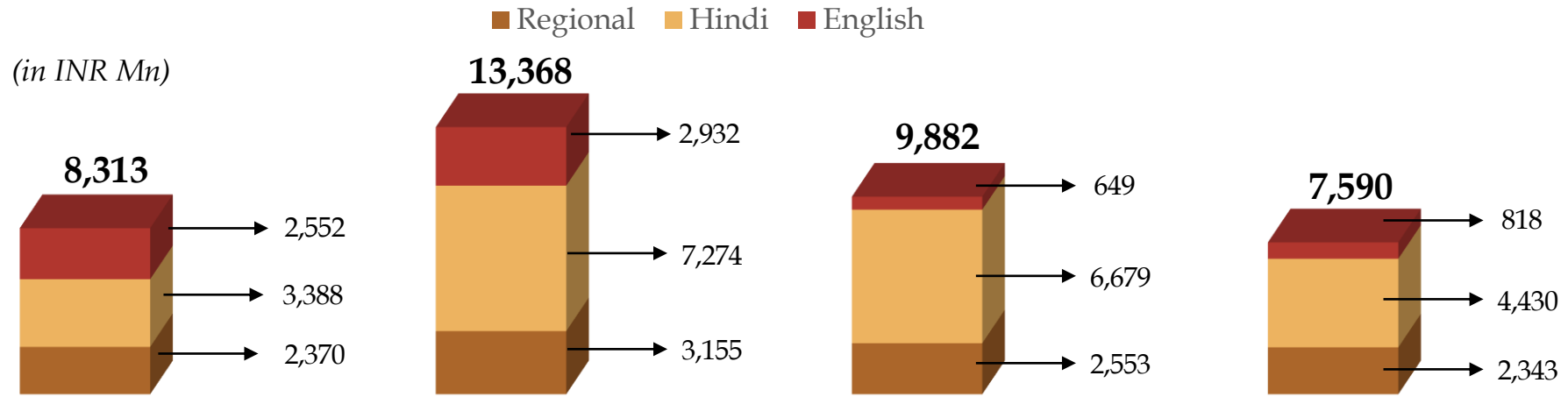
1,143
-2,122

(1) FY'23 numbers are Proforma for the combined entity PVR INOX

	ADMITS (Mn)	ATP (INR)	SPH (INR)
Q4, FY'24 <hr/> Q4, FY'23	32.6 (+6.9%) <hr/> 30.5	233 (-2.4%) <hr/> 239	129 (+8.4%) <hr/> 119
12M, FY'24 <hr/> 12M, FY'23 ⁽¹⁾	151.4 (+7.8%) <hr/> 140.4	259 (+9.5%) <hr/> 236	132 (+10.6%) <hr/> 120

(1) FY'23 numbers are Proforma for the combined entity PVR INOX

Significant volatility observed in the Quarterly Box Office Collections

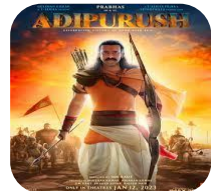


TOP 3 MOVIES IN THE QUARTER*

Q1 FY'24



The Kerala Story
(Hindi)
1,032 mn



Adipurush
(Hindi / Telugu)
801 mn

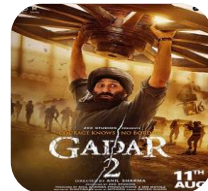


Fast X
(English)
628 mn

Q2 FY'24



Jawan
(Hindi)
2,454 mn



Gadar 2
(Hindi)
1,858 mn



Rocky Aur Rani Ki Prem Kahani
(Hindi)
1,014 mn

Q3 FY'24



Animal
(Hindi)
2,259 mn



Tiger 3
(Hindi)
1,008 mn



Salaar
(Telugu)
961 mn

Q4 FY'24



Fighter
(Hindi)
1,095 mn

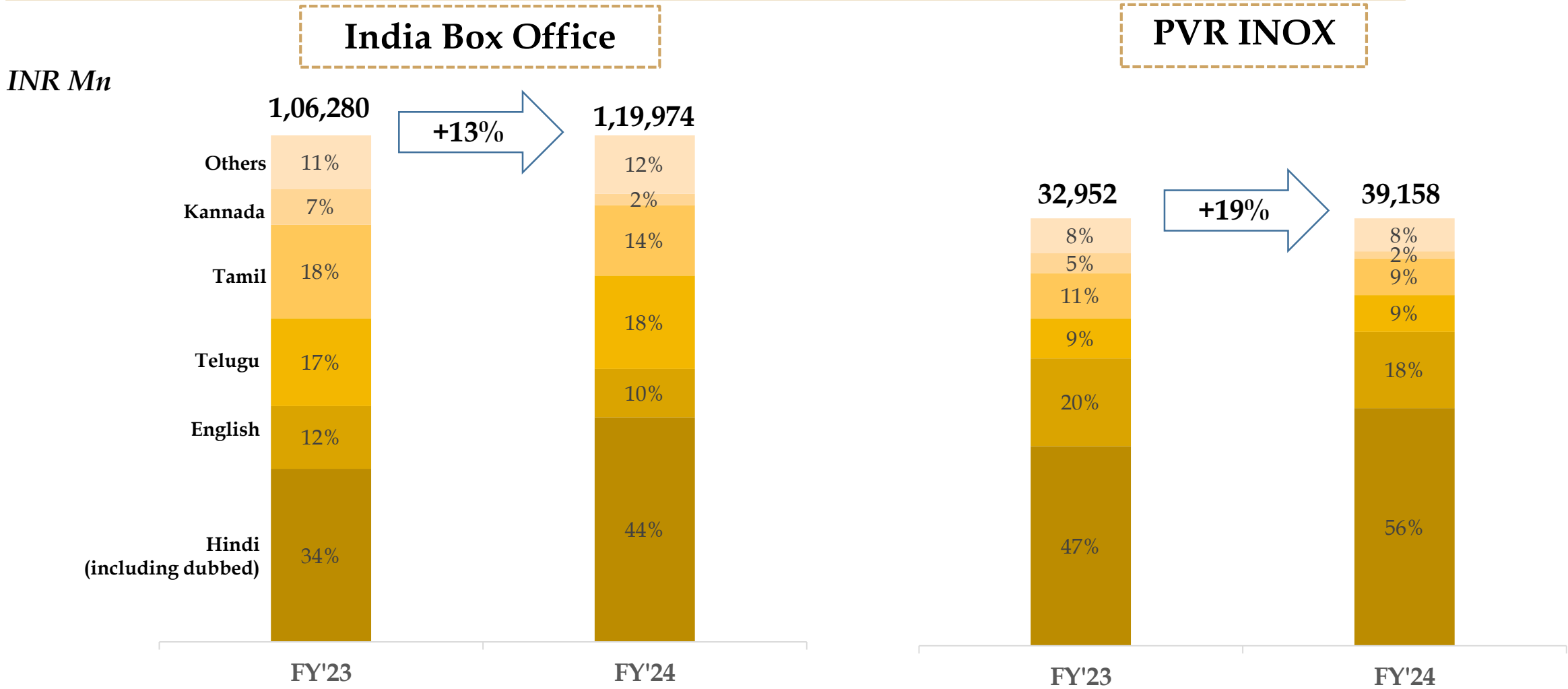


Shaitaan
(Hindi)
712 mn



Hanuman
(Hindi / Telugu)
525 mn

Language wise mix (FY'24 vs FY'23)



- PVR INOX box office has grown by 19% as compared to 13% growth of India Box Office
- Share of Hindi Box Office increased significantly from FY'23 to FY'24

Result Summary (Consolidated) - Q4, FY'24 vs Q4, FY'23

Particulars (INR Mn)	Q4, FY'24			Q4, FY'23		
	Reported	Ind-AS 116 Impact	Ind-AS 116 Adjusted	Proforma	Ind-AS 116 Impact	Ind-AS 116 Adjusted
Total Income	13,055	151	12,904	11,649	2	11,647
Expenses	9,780	-2,772	12,552	8,793	-2,585	11,378
EBITDA	3,275	2,923	352	2,856	2,587	269
EBITDA Margin	25.1%		2.7%	24.5%		2.3%
Depreciation & Amortization	3,028	1,906	1,122	2,962	1,765	1,197
EBIT	247	1,017	-770	-106	822	-928
Finance Costs	1,999	1,546	453	1,886	1,467	419
PBT before Exceptional item	-1,752	-529	-1,223	-1,992	-646	-1,346
Exceptional Item	-		-	-108		-108
PBT after Exceptional item	-1,752	-529	-1,223	-2,100	-646	-1,454
Corporate Tax	-455	-133	-322	1,240	-162	1,402
PAT	-1,297	-396	-901	-3,340	-483	-2,857
PAT Margin	-9.9%		-7.0%	-28.7%		-24.5%
EPS - Basic (INR)	-13.21		-9.18	-		-
EPS - Diluted (INR)	-13.12		-9.12	-		-

Result Summary (Consolidated) - 12M, FY'24 vs 12M, FY'23

Particulars (INR Mn)	12M, FY'24			12M, FY'23 ⁽¹⁾		
	Reported	Ind-AS 116 Impact	Ind-AS 116 Adjusted	Proforma	Ind-AS 116 Impact	Ind-AS 116 Adjusted
Total Income	62,637	600	62,037	53,212	107	53,105
Expenses	42,970	-10,980	53,950	37,090	-9,923	47,013
EBITDA	19,667	11,580	8,087	16,122	10,030	6,092
EBITDA Margin	31.4%		13.0%	30.3%		11.5%
Depreciation & Amortization	12,193	7,486	4,707	9,847	5,932	3,915
EBIT	7,474	4,094	3,380	6,275	4,097	2,177
Finance Costs	7,913	6,059	1,854	7,741	6,072	1,668
PBT before Exceptional item	-439	-1,965	1,526	-1,466	-1,975	509
Exceptional Item	-		-	-352		-352
PBT after Exceptional item	-439	-1,965	1,526	-1,818	-1,975	157
Corporate Tax	-112	-495	383	1,783	-497	2,280
PAT	-327	-1,470	1,143	-3,600	-1,478	-2,122
PAT Margin	-0.5%		1.8%	-6.8%		-4.0%
EPS - Basic (INR)	-3.26		11.41	-		-
EPS - Diluted (INR)	-3.24		11.34	-		-

(1) FY'23 numbers are Proforma for the combined entity PVR INOX

Key Operating Numbers

For the purpose of comparing 12M FY'24 operating & financial numbers, proforma PVR INOX numbers have been presented for the corresponding period in FY'23

Particulars	Units	Q4, FY'24			Q4, FY'23			12M, FY'24			12M, FY'23		
		Reported (A)	Reported (B)	YoY Change (%) (A/B-1)	Reported (A)	Reported (B)	YoY Change (%) (A/B-1)	Reported (A)	PVR + INOX Proforma (B)	YoY Change (%) (A/B-1)	Reported (A)	PVR + INOX Proforma (B)	YoY Change (%) (A/B-1)
Operating Numbers													
Closing Cinemas Count ⁽¹⁾		359	359	0%	359	359	0%	359	359	0%	359	359	0%
Closing Screens Count ⁽¹⁾		1,718	1,680	2%	1,718	1,680	2%	1,718	1,680	2%	1,718	1,680	2%
Weighted Average Screens ⁽²⁾		1,674	1,605	4%	1,674	1,605	4%	1,668	1,542	8%	1,668	1,542	8%
Admits	Mns	32.6	30.5	7%	32.6	30.5	7%	151.4	140.4	8%	151.4	140.4	8%
Occupancy	%	22.6%	22.2%	37 bps	22.6%	22.2%	37 bps	25.6%	25.2%	41 bps	25.6%	25.2%	41 bps
Avg. Ticket Price (ATP)	INR	233	239	-2%	233	239	-2%	259	236	10%	259	236	10%
F&B Spend per Head (SPH)	INR	129	119	8%	129	119	8%	132	120	11%	132	120	11%

(1) Includes 42 management screens across 12 cinemas which are managed under a 'Management fee' model. The above table excludes Operating KPIs of management properties

(2) Weighted average screens has been calculated basis the actual no. of days of operations of each cinema in an year excluding 42 management screens across 12 cinemas

Particulars (INR Mn)	Q4, FY'24			Q4, FY'23		
	Reported (A)	Reported (B)	YoY Change (%) (A/B-1)	Reported (A)	PVR + INOX Proforma (B)	YoY Change (%) (A/B-1)
Weighted Average Screens ⁽¹⁾	1,674	1,605	4%	1,668	1,542	8%
Financials						
Sale of Movie Tickets	6,353	6,016	6%	32,799	27,514	19%
Sale of Food & Beverages	4,132	3,520	17%	19,584	16,180	21%
Advertisement Income	1,045	907	15%	4,519	3,818	18%
Convenience Fees	437	591	-26%	2,181	2,470	-12%
Other Operating Income	597	398	50%	1,988	2,244	-11%
Other Income	340	215	58%	966	880	10%
Total Income	12,904	11,647	11%	62,037	53,105	17%

(1) Weighted average screens has been calculated basis the actual no. of days of operations of each cinema in an year excluding 42 management screens across 12 cinemas

Expense Analysis

Particulars (INR Mn)	Q4, FY'24		Q4, FY'23		12M, FY'24		12M, FY'23	
Weighted Average Screens ⁽¹⁾	1,674	1,605	4%		1,668	1,542	8%	
Variable Cost	Reported (A)	Reported (B)	YoY Change (%) (A/B-1)		Reported (A)	PVR + INOX Proforma (B)	YoY Change (%) (A/B-1)	
FHC (%)	44.4%	46.9%	-248 bps		46.0%	45.5%	49 bps	
COGS (%)	27.4%	26.0%	148 bps		25.2%	24.8%	36 bps	
Fixed Cost								
Rent	2,993	2,674	12%		11,928	10,426	14%	
CAM	832	733	14%		3,296	2,869	15%	
Personnel	1,706	1,514	13%		6,573	5,788	14%	
Electricity & Water / Utilities	758	761	0%		3,853	3,364	15%	
Other Expenses ex Movie Dist., Print	2,025	1,903	6%		7,347	6,890	7%	
Total Fixed Expenses ex Movie Dist.	8,314	7,585	10%		32,997	29,337	12%	
Movie Dist., Print charges ⁽²⁾	638	266	140%		1,846	1,563	18%	
Total Fixed Expenses incl. Movie Dist.	8,952	7,851	14%		34,843	30,900	13%	

(1) Weighted average screens has been calculated basis the actual no. of days of operations of each cinema in an year excluding 42 management screens across 12 cinemas

(2) Expenses relating to Distribution of movies

Significant Fixed Cost Control over the last 4 years

		FY'20	4 Year CAGR	FY'24
		<i>PVR + INOX Proforma</i>		<i>PVR + INOX</i>
On per screen basis (INR mn)				
Occupancy Cost	Weighted Average Screens ⁽¹⁾	1,371	5%	1,668
	Rent	6.2	4% ⁽²⁾	7.2
	CAM	1.6	6% ⁽²⁾	2.0
Manpower	Manpower Cost	5.5	- 3%	4.9
	Total Headcount	24,285	- 12% reduction over 4 years	21,458
	Total Headcount per screen	17.7	- 27% reduction over 4 years	12.9
Other Fixed Costs	Utilities (Electricity & Water)	2.3	- 0.3%	2.3
	Other Overheads	3.8	- 3%	3.4
Total Fixed Cost⁽³⁾ / Screen		19.4	0.5%	19.8

(1) Weighted average screens has been calculated basis the actual no. of days of operations of each cinema in an year.

(2) In line with contractual Rent & CAM escalation terms

(3) excluding Movie Distribution and Print charges

Significant cost reduction measures resulted in near zero growth in fixed cost per screen over 4 years, despite of 25% growth in CPI Index



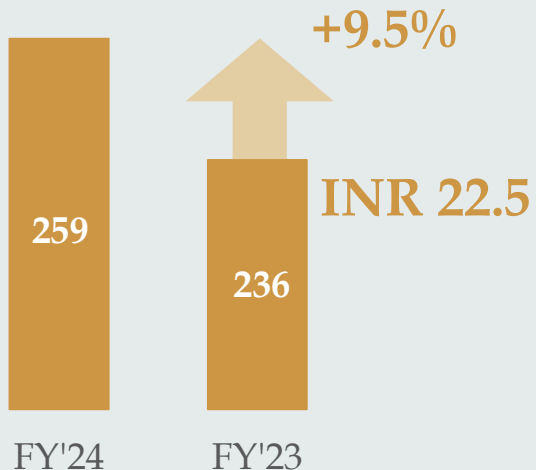
Progress on Merger Synergies

- In February 2023, post merger completion, the company had guided for annual EBITDA level synergies of INR 2,250 mn expected over 12-24 months from the core Exhibition business
- Synergy numbers are presented for the core Exhibition business financials.

Box Office Revenue Synergy

ATP Growth FY'23 to FY'24

A



Organic Y-o-Y ATP Growth

B

3.5% - 4.0%

INR 8.3 to 9.4

Implied Synergy Growth

A-B

5.5% - 6.0%

INR 13.1 to 14.2

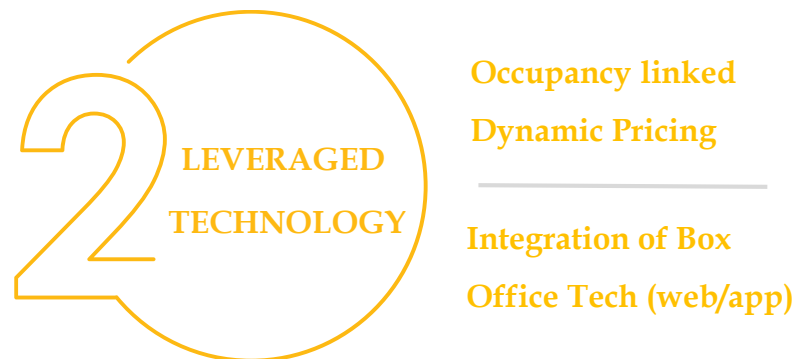
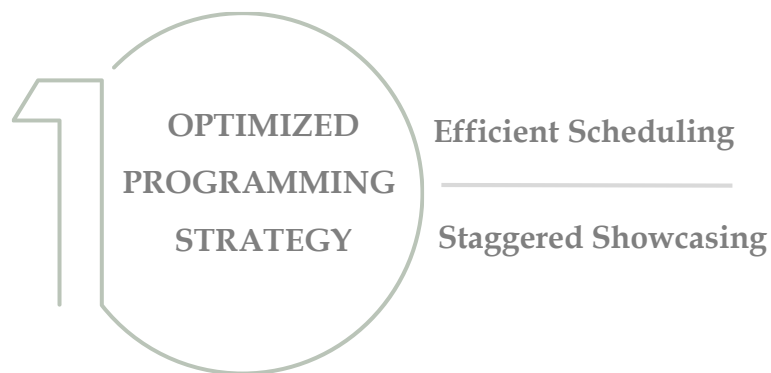
X 151.4 mn admits
In FY'24

Box Office Synergy FY'24

~INR 890 mn to
970 mn

Box Office
EBITDA Synergy*

*Net of GST and
Distributor share

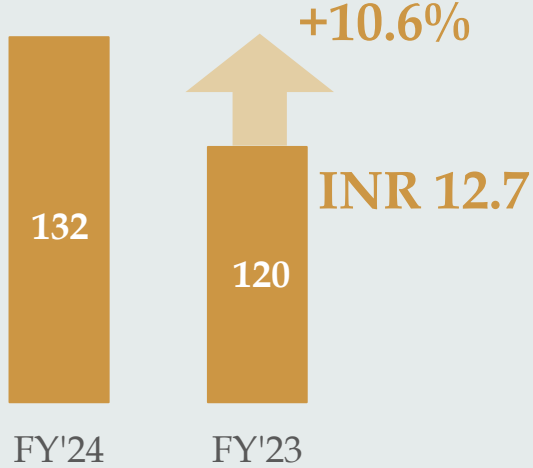


F&B Revenue Synergy

PVR INOX

SPH Growth
FY'23 to FY'24

A



Organic Y-o-Y
SPH Growth

B

7.5% - 8.0%
INR 9.0 to 9.6

Implied Synergy
Growth

A-B

2.6% - 3.1%
INR 3.1 to 3.7
X 151.4 mn admits
In FY'24

F&B Synergy
In FY'24

~INR 340 mn to
400 mn

F&B
EBITDA Synergy*

*Net of GST and F&B COGS

Weekday Offer

BESTSELLERS
STARTING AT
₹99 ONLY
MON TO THU
9AM TO 6PM

- SANDWICH + PEPSI (100% Veg)
- SAMOSAS (110g, 220cal)
- BURGER (110g, 157cal)

Weekend Offer

UNLIMITED REFILL OFFER
FRIDAY TO SUNDAY

Get Unlimited Popcorn Refills (210 gm)
Get Unlimited Pepsi Refills (210 ml)

Introduction of Non Veg at INOX

INOX
A PVR INOX EXPERIENCE

WE ARE NOW SERVING
NON VEG
FOOD PRODUCTS IN THIS CINEMA

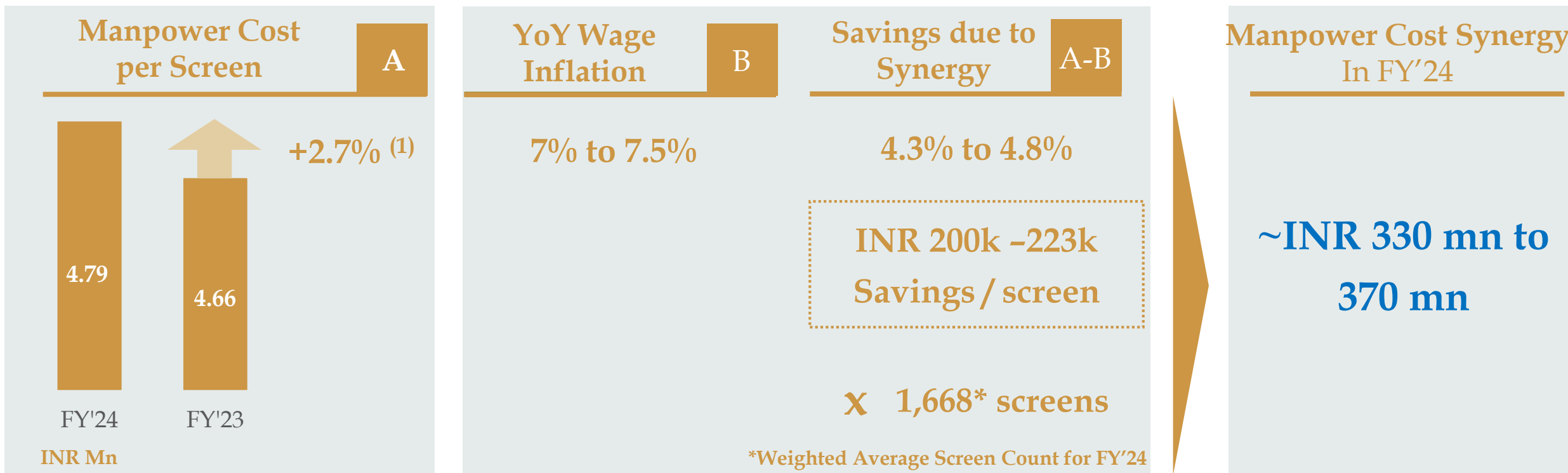
SANDWICH BURGER PIZZA HOT DOG ROLLS

SKU Standardization

PVR			
	Combo 18g	Combo 35g	Small 50g
INOX			
		Large 30g	Large 50g
PVR INOX			
	Discontinued	Discontinued	Standard 50g

Plus similar other initiatives

Manpower Cost Synergy (Personnel, House Keeping, Security)



(1) 2.7% increase comprises of:

- 3.8% reduction in head count / screen
- 6.7% increase in Cost / employee



Efficient Manpower planning

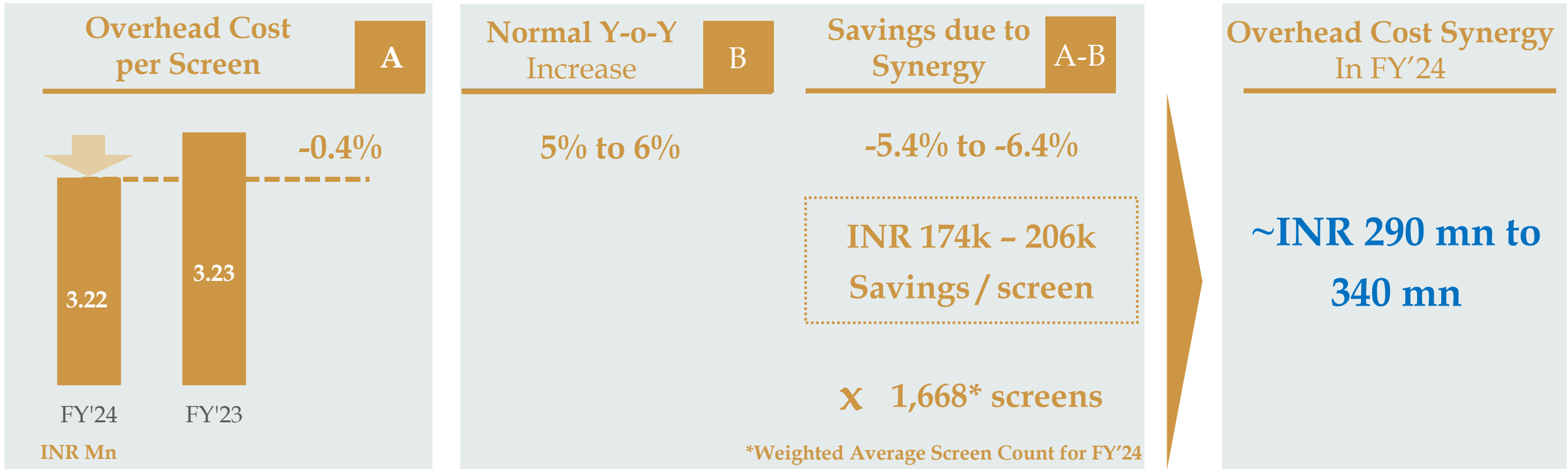


Renegotiation of Contracts



Standardizing SOPs across PVR INOX

Other Overhead Synergy



Other Overheads include all fixed costs excluding Rent, CAM, Utilities, Personnel, Housekeeping & Security



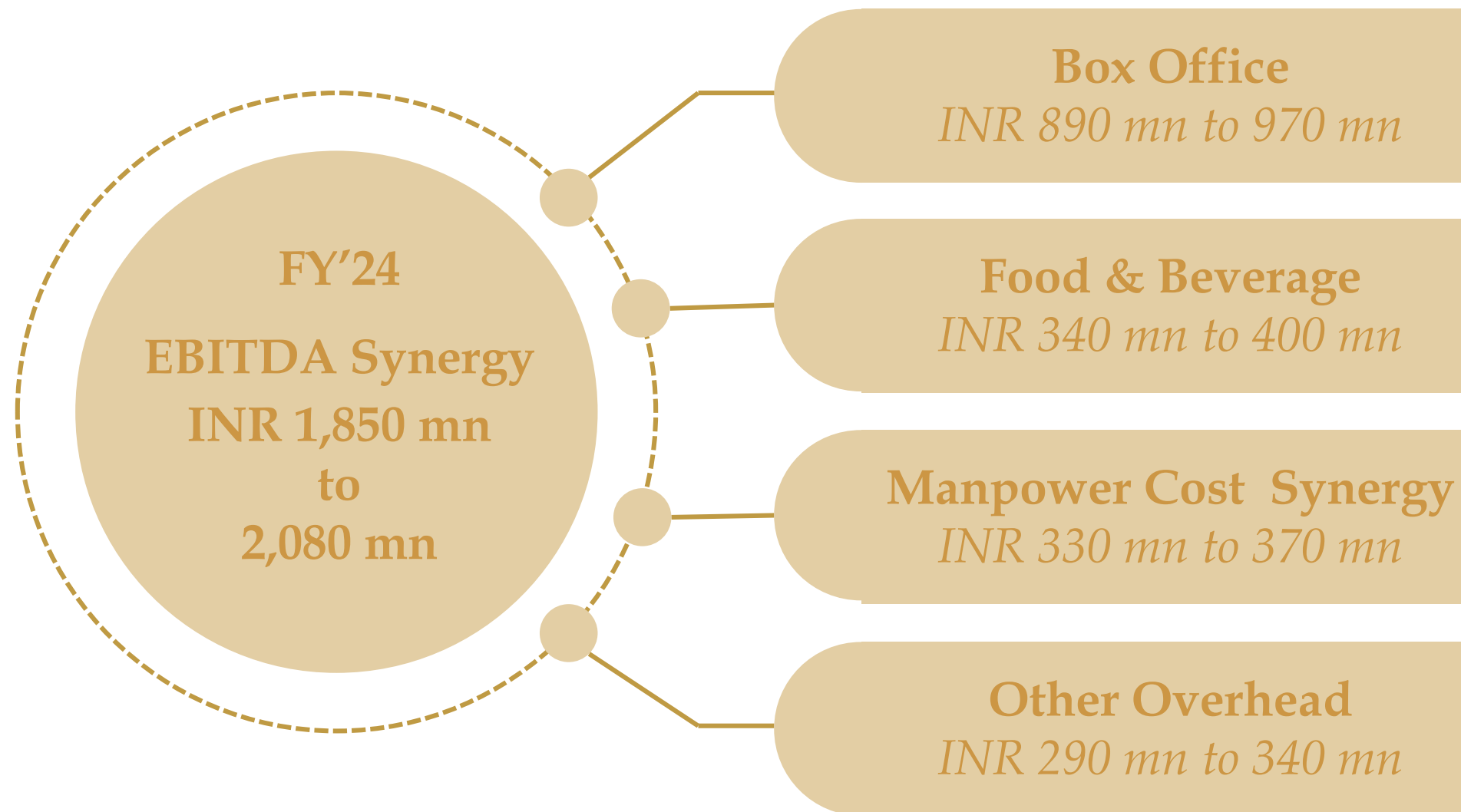
Renegotiation of Contracts



Economies of Scale



Moving to common vendors



**Significant merger synergies realized within 12 months of merger completion.
Full impact of synergies would be visible as occupancies improve.**

Balance Sheet

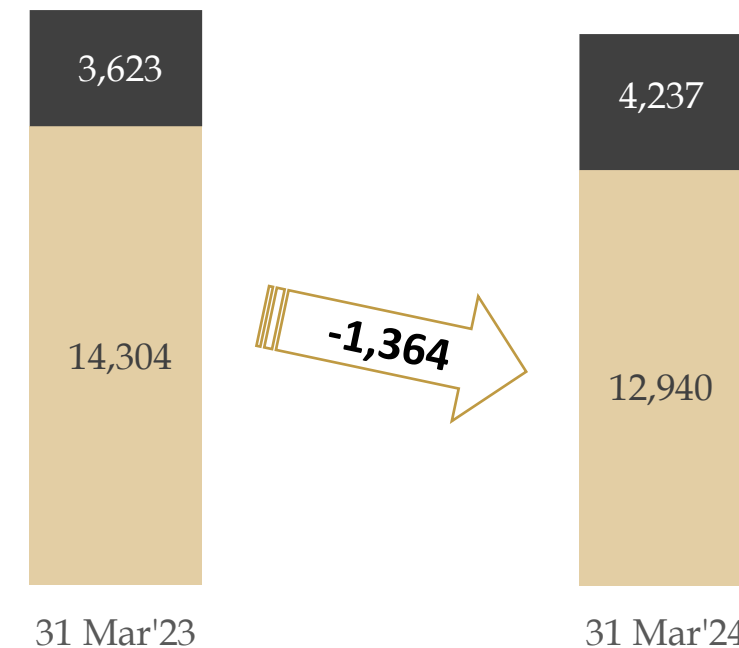
INR Mn

17,177

Particulars (INR Mn)	Consolidated	
	March 31, 2024	March 31, 2023
Total Shareholder funds	73,232	73,295
Equity Share Capital	981	980
Other Equity	72,254	72,322
Non-Controlling Interest	-3	-7
Total Debt	17,177	17,927
Long Term Borrowings	10,474	12,723
Short Term Borrowings	6,703	5,204
Lease Liability	65,858	62,592
Other Non Current Liabilities	930	396
Total Sources of Funds	1,57,197	1,54,210
Net Fixed Assets Incl. CWIP	34,897	33,384
Goodwill	57,431	57,431
Right of Use assets (ROU)	54,917	53,746
Other Non Current Assets	11,010	11,703
Cash & Cash Equivalents ⁽¹⁾	4,237	3,623
Current Assets	5,712	4,880
Less: Current Liabilities	11,007	10,557
Net Current Assets	-5,295	-5,677
Total Assets	1,57,197	1,54,210

Gross Debt

17,927



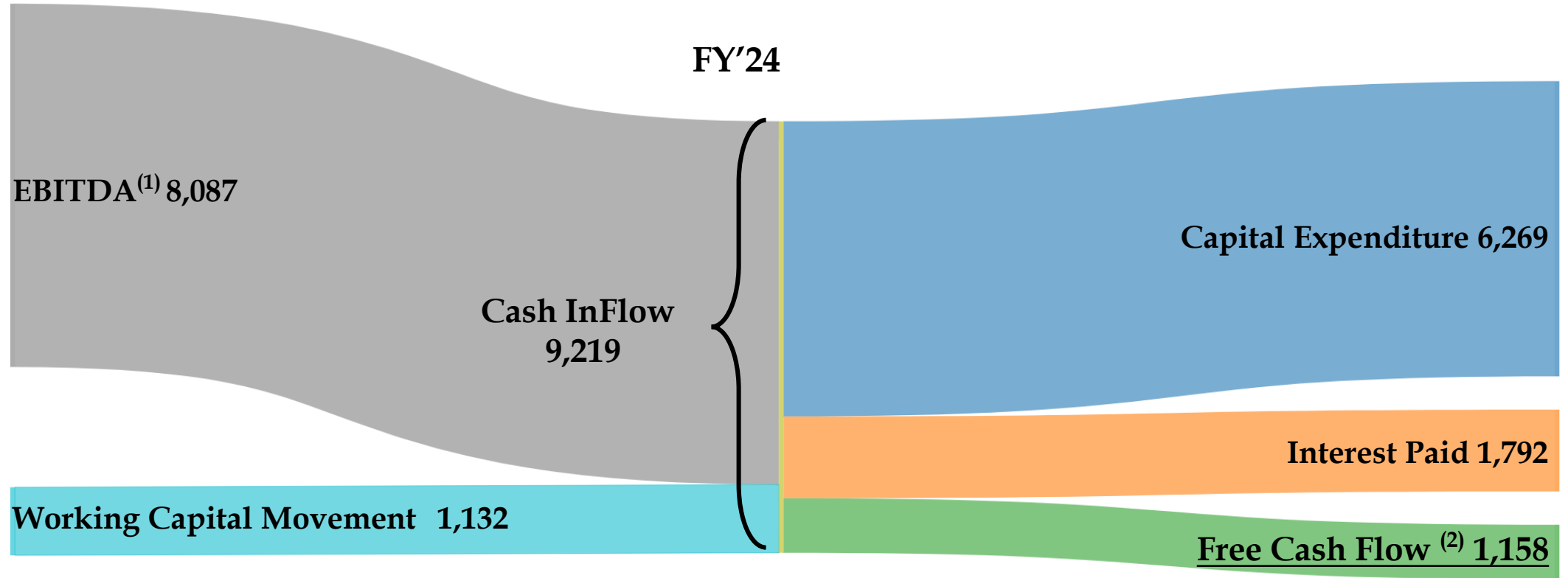
31 Mar'23

31 Mar'24

■ Net Debt ■ Cash & Cash Equivalents

Reduced Net Debt by INR 1,364 mn in FY'24

(1) Includes Investments, Other Bank balances and Bank deposits (under 'Other Financials Assets')



(1) Pre-IndAS 116 EBITDA

(2) Free Cash Flow has been calculated before changes in debt & equity

Generated free cash flow of INR 1,158 mn in a volatile year



Key Strategic Priorities

Sharp Focus on enhancing return on capital and driving free cash flow generation

**Enhance
Revenue
Through
Innovations**

Customer Acquisition and Retention Initiatives

- **Passport program:** Driving cinema visitation and consumption behavior
- **Cinema Lovers Day:** Flash sales at frequent intervals
- **Alternate Content:** Film festivals and special event screening
- **F&B Promotions:** Unlimited pop-corn & cola on weekends; discounted pricing on weekdays

Reduce Cost

Renegotiation of cinema rentals

Closed 85 underperforming screens in FY'24 and ~70 screens expected to be closed in FY'25

Leaner organization structure: Re-aligned the company leadership structure

Other overhead cost control

Transition
towards 'Capital-
light' growth
model

Change Growth Model by reducing capex intensity

- Reduce overall capex in FY'25 by ~25% over FY'24
- Partner with developers to jointly invest in new screen capex
- Very selective in new screen additions - plan to open about 120 new screens in FY'25, prioritizing expansion efforts in South India

Reduce Debt

Key priority is to become net-debt free

Evaluating monetization of owned real estate assets (*likely value of INR 3,000 to 4,000 mn*)

Leverage 'Scale', 'Market Leadership' and 'Brand Equity' to redefine the Growth Strategy

Screen Growth Update

#	Property name	Opening Date	Screens
1.	INOX NCS Square, Guwahati	16-Apr-23	3
2.	INOX Vishal Cinemas, Delhi	1-May-23	6
3.	PVR Global Mall, Bengaluru	4-June-23	7
4.	INOX Pacific Mall, Jasola, Delhi	30-June-23	10
5.	PVR Satyamev Emporio, Ahmedabad	30-June-23	5
New Screens Opened in Q1			31

6.	PVR Forum Kanakapura Bengaluru	20-Jul-23	12
7.	PVR Plutone, Rourkela	28-Jul-23	5
8.	INOX KP Mall, Patna	1-Aug-23	3
9.	INOX Paras Cinema, Delhi	7-Sep-23	1
10.	INOX Smart City Mall, Dharwad	10-Sep-23	4
11.	INOX Himalaya Mall, Ahmedabad	16-Sep-23	5
12.	PVR CP 67Mall, Mohali	29-Sep-23	7
New Screens Opened in Q2			37

#	Property name	Opening Date	Screens
13.	PVR Elan Mercado, Gurgaon	27-Oct-23	5
14.	PVR Utkal Galleria Mall, Bhubaneswar	12-Nov-23	4
15.	INOX Maison, BKC, Mumbai	11-Nov-23	6
16.	PVR Keshar Mall, Gwalior	6-Dec-23	4
17.	PVR V Square Mall, Cuddalore	17-Dec-23	3
18.	INOX IRIS Broadway, Sector 85, Gurgaon	21-Dec-23	3
19.	INOX Indiabulls Mega mall, Jodhpur	31-Dec-23	4
New Screens Opened in Q3			29

20.	PVR Mittal Mall, Ajmer	28-Jan-24	4
21.	INOX EROS, Mumbai	9-Feb-24	1
22.	PVR Sangam, Mumbai	27-Feb-24	4
23.	INOX Ambuja, Patna	1-Mar-24	4
24.	INOX PMC, Wakad, Pune	1-Mar-24	14
25.	PVR Pacific Mall, Faridabad	4-Mar-24	6
New Screens Opened in Q4			33

FY'24

130

-

85

=

45

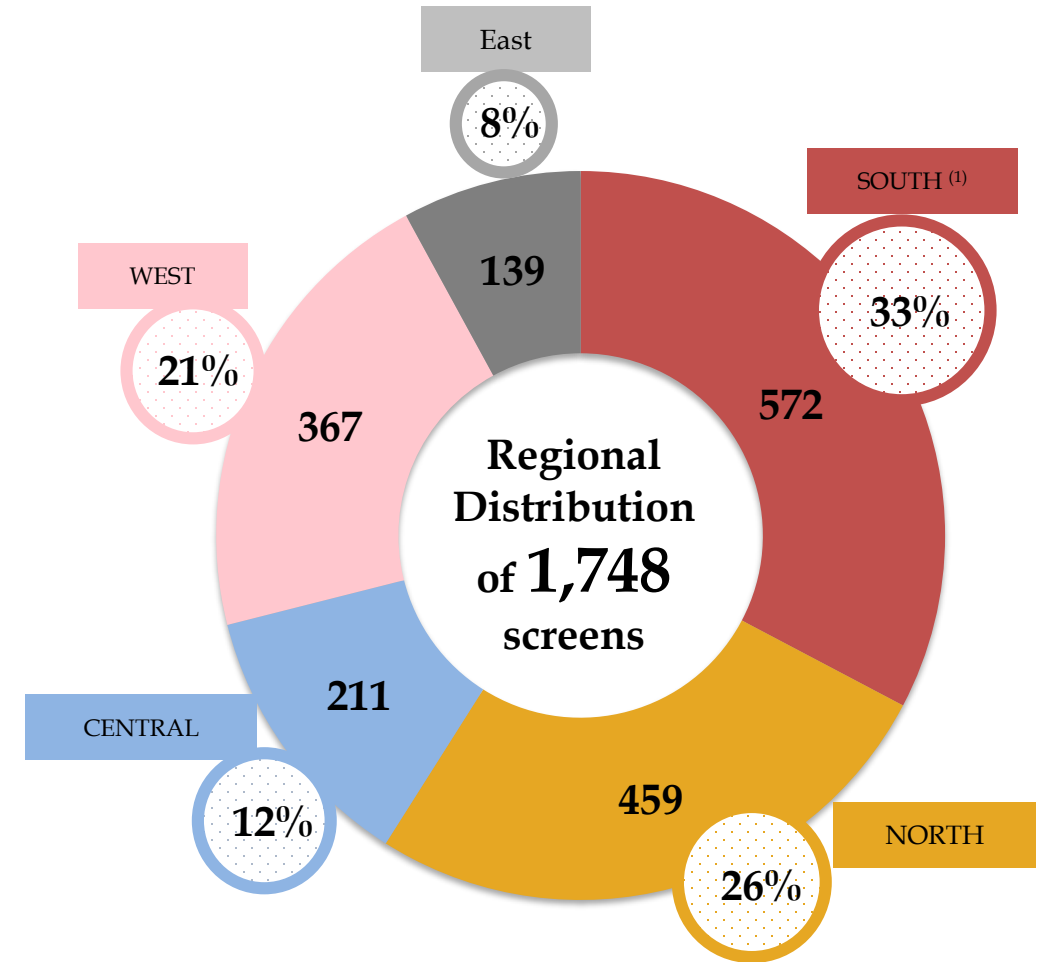
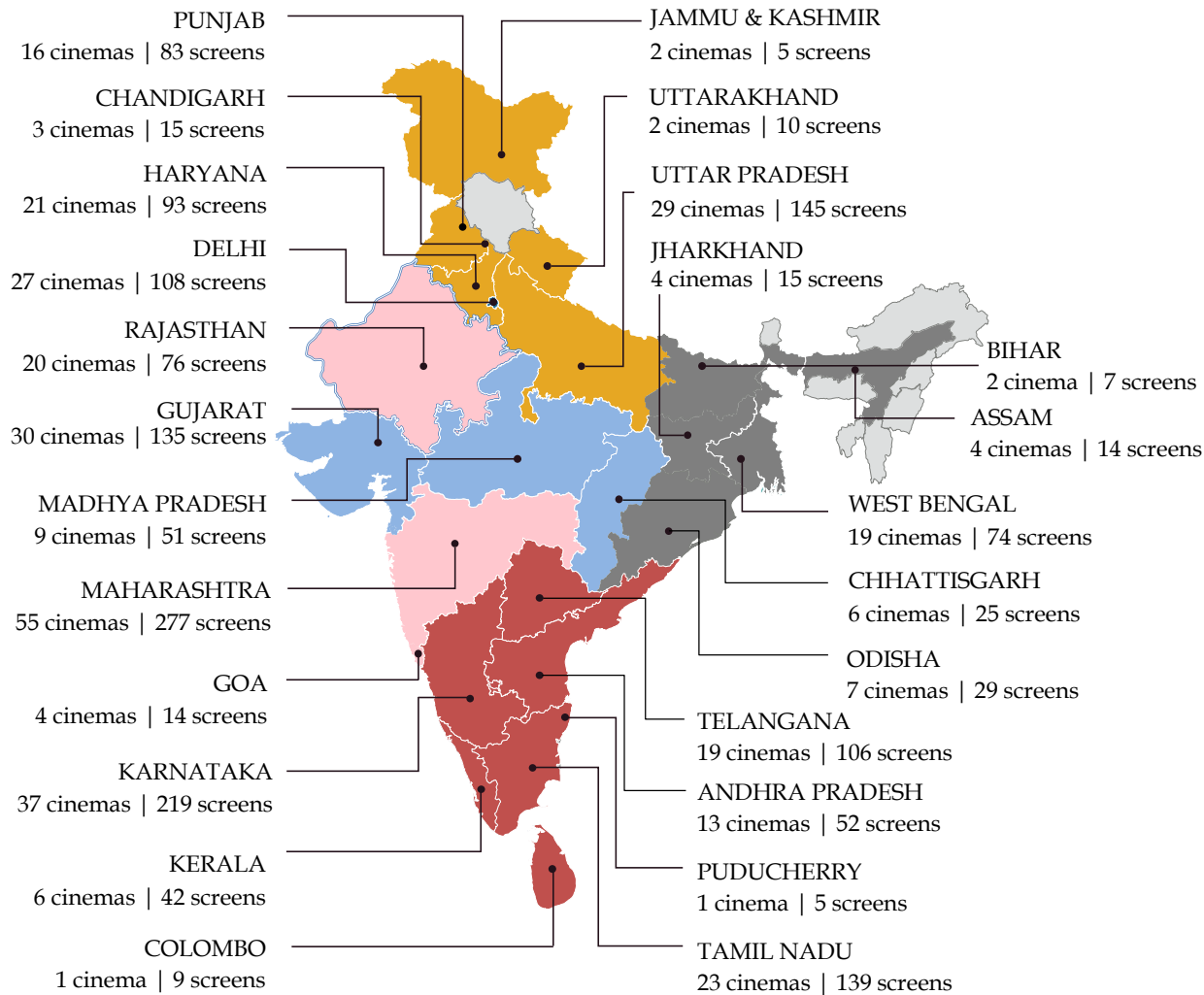
New Screens Opened

Screens Closed

Net Screen addition

Expect to open ~120 new screens in FY'25. Net screen addition of 50-60 screens

Diversified Screen Network of 1,748 Screens across 112 Cities



Note : Includes 12 Management Properties with 42 screens
Map not to scale, Screen Portfolio as on date

(1) South includes Sri Lanka



CONTENT LINEUP



IF: IMAGINARY FRIENDS

CAST
RYAN REYNOLDS,
JOHN KRASINSKI,
CAILEY FLEMING

DIRECTOR
JOHN KRASINSKI

ENGLISH

17TH MAY 2024



THE GARFIELD MOVIE - 3D/4DX

CAST
HANNAH
WADDINGHAM,
CHRIS PATT,
SAMUEL L JACKSON

DIRECTOR
MARK DINDAL

ENGLISH, HINDI

17TH MAY 2024



FURIOSA: A MAD MAX SAGA - IMAX/4DX/SCREEN-X/ICE

CAST
ANYA TAYLOR JOY ,
CHRIS HEMSWORTH

DIRECTOR
GEORGE MILLER

**ENGLISH, HINDI,
TAMIL, TELUGU**

23RD MAY 2024



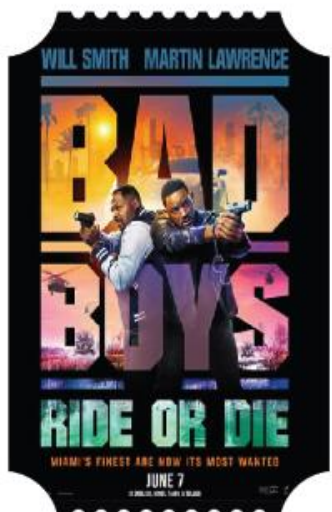
MR AND MRS MAHI

CAST
RAJKUMMAR RAO,
JANHVI KAPOOR

DIRECTOR
SHARAN SHARMA

HINDI

31ST MAY 2024



BAD BOYS: RIDE OR DIE - IMAX, 4DX, ICE, SCREEN-X

CAST
WILL SMITH,
MARTIN LAWRENCE,
VANESSA HUDGENS

DIRECTOR
ADIL, BILALL

**ENGLISH, HINDI,
TAMIL, TELUGU**

7TH JUN 2024



INSIDE OUT 2 - ICE, IMAX, DBOX, 4DX

CAST
DIANE LANE,
AMY POEHLER

DIRECTOR
KELSEY MANN

ENGLISH

14TH JUN 2024



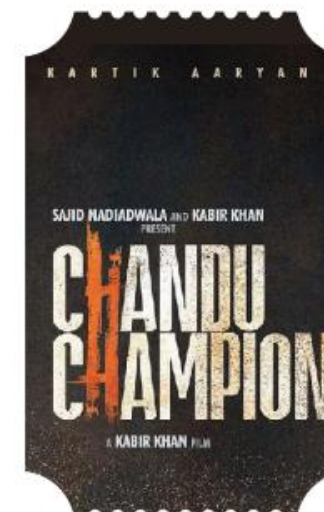
EMERGENCY

CAST
KANGANA RANAUT,
ANUPAM KHER,
SHREYAS TALPADE

DIRECTOR
KANGANA RANAUT

HINDI

14TH JUN 2024



CHANDU CHAMPION

CAST
KARTIK AARYAN ,
SHRADDHA KAPOOR

DIRECTOR
KABIR KHAN

HINDI

14TH JUN 2024

The latest content lineup can also be accessed at : <https://www.pvrcinemas.com/coming-soon-movie-calender>



KUDI HARYANE VAL DI

CAST
AMMY VIRK,
SONAM BAJWA

DIRECTOR
RAKESH DHAWAN

PUNJABI

14TH JUN'2024



THE EXORCISM

CAST
RUSSELL CROWE,
CHLOE BAILEY,
LISA BAKER,
MIRANDA BEAUDRY

DIRECTOR
M.A FORTIN,
JOSHUA JOHN
MILLER

ENGLISH

21ST JUN'2024



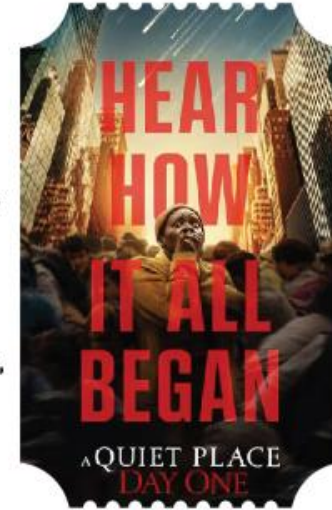
KALKI 2898 AD - IMAX

CAST
PRABHAS,
AMITABH BACHCHAN,
DEEPIKA PADUKONE

DIRECTOR
NAG ASHWIN

**TELUGU, HINDI,
TAMIL, MALAYALAM,
KANNADA**

27TH JUN'2024



A QUIET PLACE : DAY ONE - IMAX, 4DX

CAST
LUPITA NYONG'O,
JOSEPH QUINN

DIRECTOR
MICHAEL SAMOSKI

ENGLISH

28TH JUN'2024



JATT & JULIET 3

CAST
DILJIT DOSANJH,
NEERU BAJWA

DIRECTOR
JAGDEEP SIDHU

PUNJABI

28TH JUN'2024



DESPICABLE ME 4 IMAX, 4DX, SCREEN- X, ICE

CAST
STEVE CARELL,
KRISTEN WIIG

DIRECTOR
CHRIS RENAUD

ENGLISH

5TH JUL'2024



FLY ME TO THE MOON

CAST
SCARLETT JOHANSSON,
CHANNIING TATUM

DIRECTOR
GREG BERLANTI

ENGLISH

12TH JUL'2024



SARFIRA

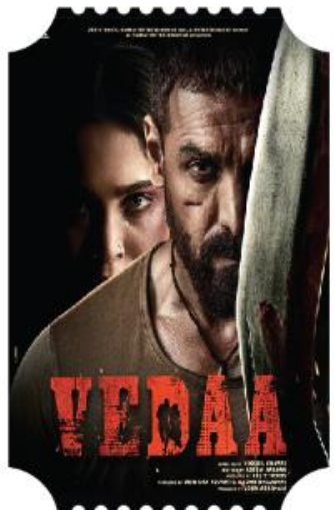
CAST
AKSHAY KUMAR,
RADHIKA MADAN,
PARESH RAWAL

DIRECTOR
SUDHA KONGARA

HINDI

12TH JUL'2024

The latest content lineup can also be accessed at : <https://www.pvrcinemas.com/coming-soon-movie-calender>



VEDAA

CAST
JOHN ABRAHAM,
SHARVARI WAGH

DIRECTOR
NIKKHIL ADVANI

HINDI

12TH JUL'2024



DEADPOOL & WOLVERINE - IMAX, 4DX, SCREEN-X, ICE

CAST
RYAN REYNOLDS,
HUGH JACKMAN,
LESLIE UGGAMS

DIRECTOR
SHAWN LEVY

ENGLISH

26TH JUL'2024



THE SABARMATI REPORT

CAST
VIKRANT MASSEY,
RAASHI KHANNA,
RIDHI DOGRA

DIRECTOR
RANJAN CHANDEL

HINDI

2ND AUG'2024



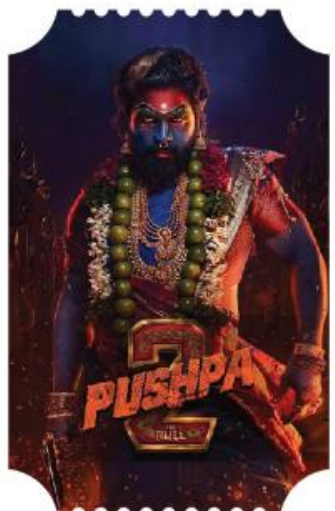
BORDERLANDS-IMAX

CAST
CATE BLANCHETT,
KEVIN HART,
JACK BLACK,
JAMIE LEE CURTIS,
EDGAR RAMIREZ

DIRECTOR
ELI ROTH

ENGLISH

9TH AUG'2024



PUSHPA 2: THE RULE - IMAX

CAST
ALLU ARJUN,
RASHMIKA MANDANNA,
FAHADH FAASIL

DIRECTOR
SUKUMAR

**TELUGU, HINDI,
TAMIL, KANNADA,
MALAYALAM**

15TH AUG'2024



ALIEN ROMULUS - IMAX, ICE

CAST
CAILEE SPANEY,
ISABELA,
ARCHIE RENAUX,
DAVID JONSSON,
SPIKE FEARN

DIRECTOR
FEDE ALVAREZ

ENGLISH

16TH AUG'2024



KRAVEN THE HUNTER - IMAX, 4DX, MX4D, SCREEN X

CAST
AARON TAYLOR,
JOHNSON

DIRECTOR
J.C CHANDOR

**ENGLISH, HINDI,
TAMIL, TELUGU**

30TH AUG'2024



STREE 2

CAST
SHRADDHA KAPOOR,
RAJKUMMAR RAO,
PANKAJ TRIPATHI,
ABHISHEK BANERJEE,
APARSHAKTI
KHURANA

DIRECTOR
AMAR KAUSHIK

HINDI

30TH AUG'2024

The latest content lineup can also be accessed at : <https://www.pvrcinemas.com/coming-soon-movie-calender>

A dimly lit cinema lobby with a bar and seating area. The bar has signs for 'CHAAT' and 'POPCORNI'. The floor has a black and white zigzag pattern. There are red armchairs and a long red sofa. The ceiling has a grid pattern and several chandeliers. The text 'PVR INOX' is in orange and 'THANK YOU' is in white with a gold outline.

PVR INOX
THANK YOU