

CIN: - L45208GJ1983PLC006056

GST NO: [REDACTED] 24AAACG5585F1ZO

Date: 03.01.2024

To,

Department of Corporate Services
The Bombay Stock Exchange Ltd.
P.J. Towers,
Dalal Street, Fort,
Mumbai- 400 001

Scrip Code — GUJTLRM / 513337
ISIN: INE145J01032

Dear Sir/Madam,

SUB: GTL UNVEILS INVESTOR PRESENTATION: ANTICIPATES REVENUE SURGE OF INR 700 TO 1000 CRORES FROM ZAMBIA MINING VENTURE:

We are thrilled to share a major development at Gujarat Toolroom Limited (GTL). In our upcoming investor presentation, we will spotlight our ground breaking mining operation in Zambia, poised to yield an estimated revenue range of INR 700 to 1000 crores.

Join us as we unveil the details of this strategic venture, showcasing our commitment to diversification, sustainable growth, and substantial returns. Stay tuned for insights into how this mining operation is set to contribute significantly to GTL's overall revenue.

Catch the latest updates on our promising venture – don't miss out on this exciting presentation!

Thanking you,

Yours Faithfully,

For Gujarat Toolroom Limited



Narendra Sharma
Managing Director
DIN: 10295571



GUJARAT TOOLROOM ZAMBIA LIMITED

Path to ₹700 Crore
Annual Revenue!

TABLE OF CONTENT

01

About Company

02

Vision & Mission

03

Core Values

04

Key Operations

05

Processing Facilities

06

Environmental
Responsibility

07

Safety Standards

08

Community
Development

09

Corporate Social
Investment - CSI



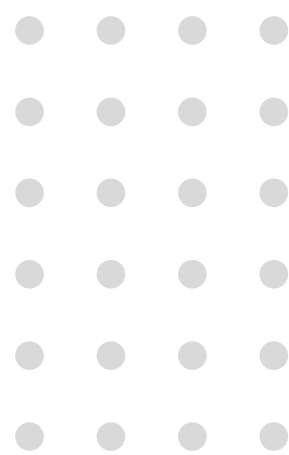


ABOUT OUR COMPANY

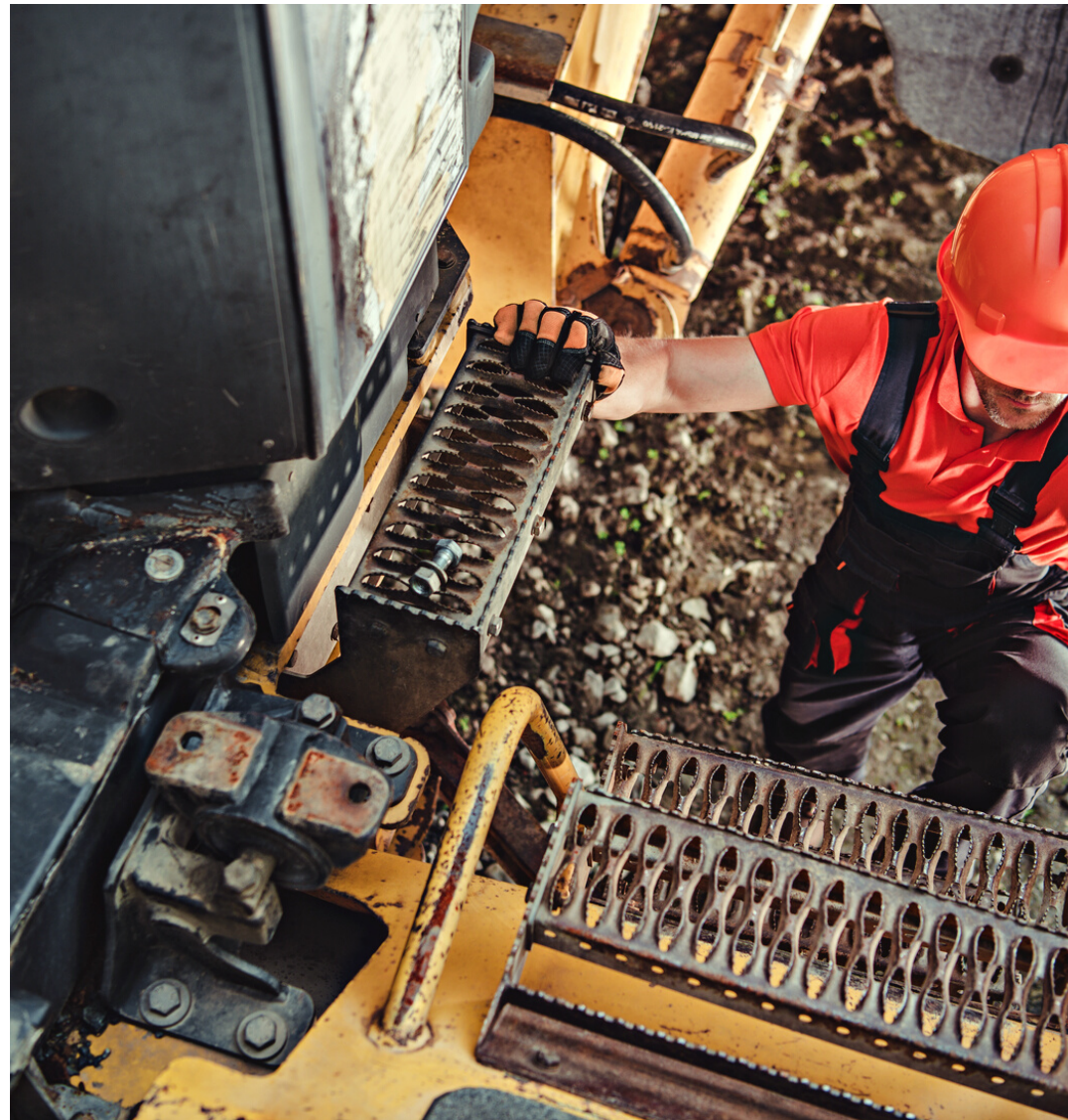
Gujarat Toolroom Zambia Ltd. aspires to become a leading export-focused company in gold exploration, mining, extraction, and jewelry processing, adhering to responsible and environmentally friendly practices. With TPIN No. 2002150331, our team of international and local experts is dedicated to positioning our company as a significant contributor to the global gold supply chain. We strive to establish benchmarks for ethical practices, safety, and innovation, consistently delivering high-quality gold products in local, regional, and global markets.

\$250K

expected daily turnover



VISION AND MISSION



Core Values

Integrity - Conducting business honestly, transparently, and with ethical standards.

Safety - Maintaining a safe working environment and prioritising the well-being of our employees at all times.

Sustainability - Balancing economic success with environmental and social responsibility.

Innovation - Embracing technological advancements to enhance efficiency and reduce adverse environmental impact.

Vision

To become a prominent producer, refiner and processor of high-quality gold in Zambia and the region

Mission

To responsibly extract, process and refine gold, ensuring strict adherence to industrial standards, environment, community engagement and consistently delivering value to our stakeholders



OUR MINING PROCESS

No.01 Product
Quality GOLD



Gold Testing, Refinery, and Storm Room:

These three facilities will be housed in a single building with concrete walls. The layout includes a 500-square-meter Gold Testing area, a 1000-square-meter Gold Refinery, and a 50-square-meter Storm Room, totaling 1550 square meters. Gujarat Toolroom Zambia Limited is positioned to be a leading gold refining plant in Zambia, processing pure gold to international standards.



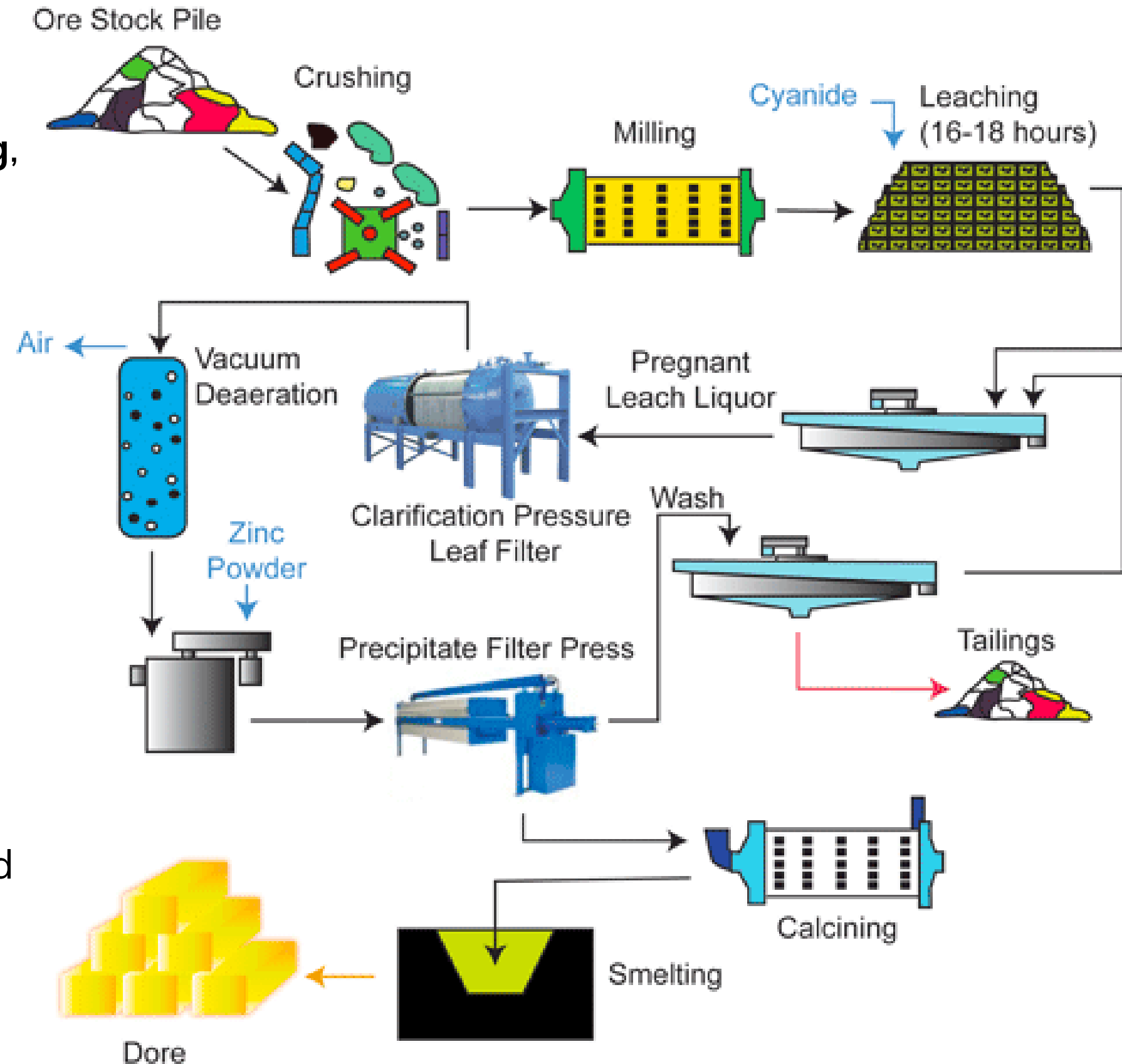
OUR MINING PROCESS

In our Gold Processing Overview, ore arrives at the **crushing** plant via rail or truck. The 350-ton live capacity coarse ore bin stores ore efficiently for a single haulage shift.

The ore undergoes **primary** and **secondary crushing, screening,** and is **stored** in a 500-ton live capacity fine ore bin. Further processing includes a single-stage overflow ball mill and leaching in the grinding circuit with recycled barren solution.

The leached slurry undergoes **two-stage drum filtration,** with clarified filtrate directed to pregnant solution tanks. The flotation conditioning circuit facilitates effective **flotation recovery,** and the **three-stage flotation circuit** recovers floatable silver minerals. The cleaned concentrate enters the Argentite leach circuit.

The **Merrill Crowe precipitation** process involves **deaeration,** followed by gold and silver precipitation with zinc dust and lead nitrate. The resulting precipitate is filtered, yielding approximately 4000 troy ounces of combined gold and silver per day in 8-1000 troy ounce dore bars.



OUR INCOME STATISTIC

Each Hectare of mine can produce

750-1000gms/day

Our 6 Hectares of mine can produce

4.5 - 6 KG Gold/day

In 12 Months our mines can produce

1.7 - 2.2 Tons of Gold / Year

Current Price of Gold :

\$66,000 or ₹ 55,00,000 per KG

Daily Revenue:

₹ 2.5 Crores - ₹ 3.3 Crores

Yearly Revenue (300 Days Cycle):

₹ 750 Crores - ₹ 990 Crores

Expected Figures based on the ideal conditions which may or may not change in the future!



KEY OPERATIONS



Mineral & Gemstone Mining



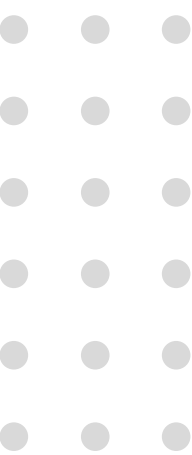
Extraction & Refinement



Exports & Sales



**Gujarat
Toolroom Ltd.**



KEY OPERATIONS

Gujarat Toolroom Zambia Ltd. will conduct efficient and environmentally responsible gold mining operations in Mumbwa District, Central Province. Leveraging the local community's familiarity with gold mining, our focus is on strict safety standards. We prioritize employing qualified Zambians, emphasizing knowledge transfer by working closely with expatriates. Our goal is to generate over 500 direct jobs and nearly 1,000 indirect jobs in Mumbwa District.



PROCESSING FACILITIES



Technology

Our cutting-edge processing facilities ensure efficient gold extraction with minimal environmental impact, setting Gujarat Toolroom Zambia Limited as the first of its kind in Zambia and the region. We handle all operations—from exploration to production—under one roof.



Sustainability

Gujarat Toolroom Zambia Limited is committed to sustainability throughout the processing chain. From ore extraction to the production of gold bars and jewelry, we prioritize responsible and eco-friendly practices.



Eco-Friendly

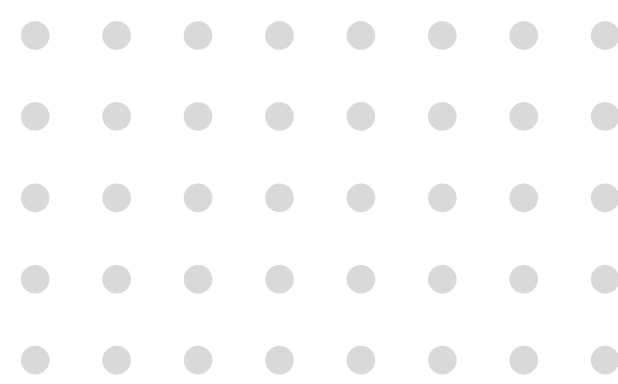
With advanced technology and a strong sustainability commitment, Gujarat Toolroom Zambia Limited aims to pioneer the gold mining industry, setting new standards for efficiency, environmental responsibility, and the seamless production of high-quality gold products.



ENVIRONMENTAL RESPONSIBILITY

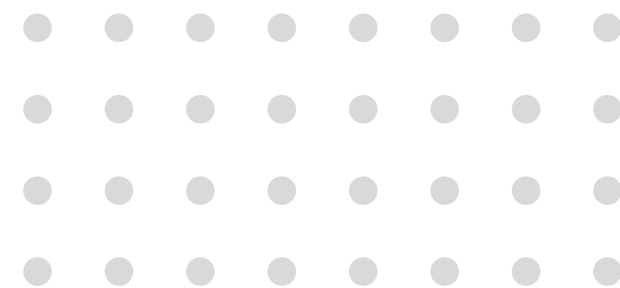
We emphasize sustainable mining through a robust environmental management system to reduce our ecological impact. Gujarat Toolroom Zambia Limited is committed to land reclamation, biodiversity conservation, and responsible utilization of national resources. In addition to exploration and mining, we encourage local communities to adopt conservation farming practices that contribute to the food value chain for our mining workforce.





COMMUNITY DEVELOPMENT

Gujarat Toolroom Zambia Limited is dedicated to cultivating positive connections with local communities. In collaboration with the Ministry of Community Development and Social Welfare, our company will support community development activities. This includes involvement in education, healthcare, water and sanitation, agriculture, and infrastructure projects. We also aim to promote local culture and traditional practices, aiming to enhance the well-being and prosperity of the areas where we operate.



CORPORATE SOCIAL INVESTMENT (CSI)

Our commitment to responsible business practices extends beyond compliance, addressing the broader needs of the communities we serve.



Collaborating with the Ministry of Health, our company will build advanced health facilities staffed with qualified professionals to cater to both our employees and neighboring communities.

Healthcare



In partnership with the Ministry of Education, our company is committed to contributing to education at all levels—pre-school, primary, secondary, tertiary, and adult literacy. This aims to empower the local community to effectively participate in mining operations.

Education



Prioritizing a disease-free environment, Gujarat Toolroom Zambia Limited will ensure the provision of safe, clean water to employees and local communities. The company will also promote standard sanitation practices for the well-being of both groups.

Water & Sanitation



Recognizing the importance of agriculture in Mumbwa, our company will encourage horticulture, poultry, and small livestock rearing by local communities. This initiative aims to contribute to the food supply of the mining community and its surrounding areas.

Agricultural Development



GET CONNECTED WITH US



Gtzi2023@gmail.com
zambai@gujarattoolroom.com



+ 260 776 991 950
+ 260 972 961 422



www.gujarattoolroom.com



PLOT NO. 48 CHURCH ROAD, RHODESPARK, LUSAKA - ZAMBIA

