

MTL/SEC/2022-23/20

Date: 05.08.2022

To,
The Secretary,
Bombay Stock Exchange Limited,
Floor 25, P. J. Towers
Dalal Street
Mumbai- 400001 (MH)

Dear Sir/Madam,

SCRIP Code No.: 511768 (MASTERTR)


Subject: **GLIMPSE OF FINANCIAL PERFORMANCE AND HIGHLIGHTS FOR THE QUARTER ENDED JUNE 30, 2022.**

In pursuance to the provisions of Regulations 30 of SEBI (Listing Obligations and Disclosure Requirements) Regulations, 2015, please find attached herewith Glimpse of Financial Performance and highlights for the Quarter ended June 30, 2022.

You are requested to take the above mentioned information on your records.

Thanking You

Yours Faithfully
For Master Trust Limited
For MASTER TRUST LIMITED


Vikas Gupta
Company Secretary
Company Secretary and Compliance Officer

Encl.: as above

Highlights

Q1 FY2022-2023

INDEX

➤ **About mastertrust**

Snapshot

Wide range of Trading & Investment Solutions

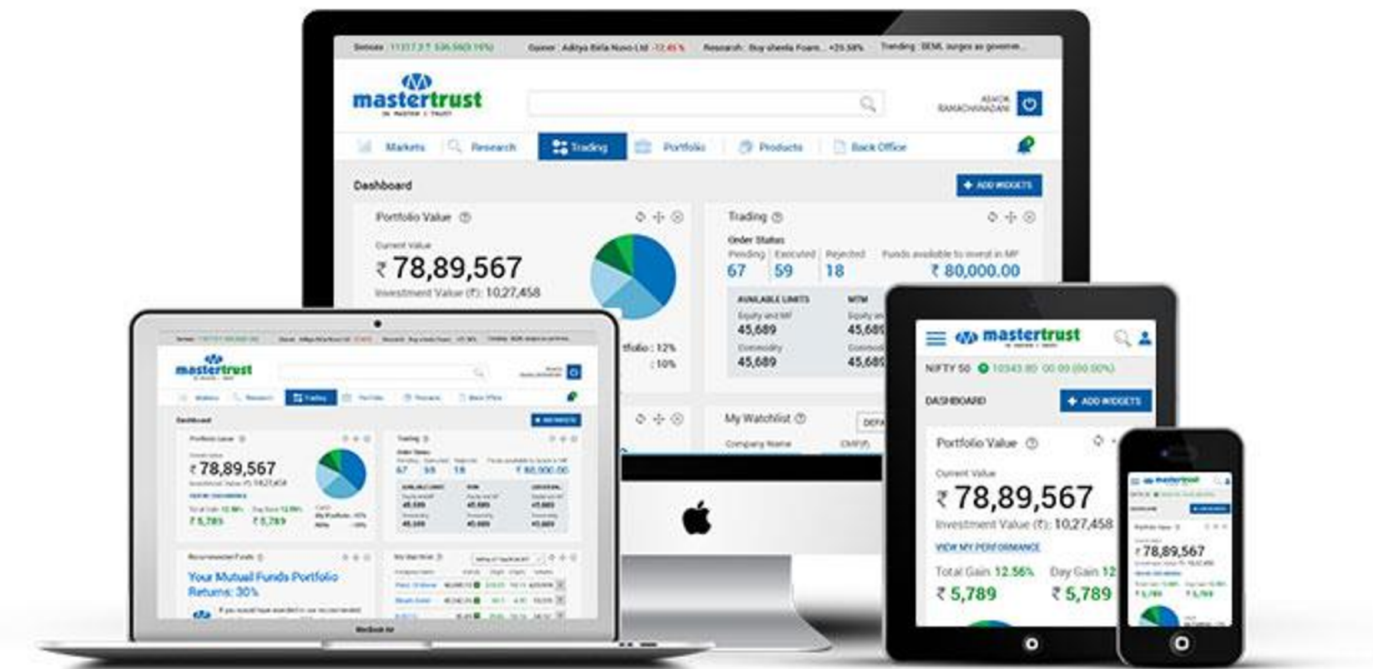
Presence Across India

Online & Offline Broking Share Ratio

Financial Highlights

ABOUT US

mastertrust Group is one of India's leading diversified financial services conglomerate. It provides a broad range of financial products and services to individuals and corporates. Established in 1985, mastertrust Group has been driven by a vision to be a well-diversified financial shop for wealth creation and to be an ideal service provider in the domain of business.



INDEX

About mastertrust

➤ **Snapshot**

Wide range of Trading & Investment Solutions

Presence Across India

Online & Offline Broking Share Ratio

Financial Highlights

SNAPSHOT



One of the leading
Brokers in Indian
Market



700+
Employees



Offer Opportunities
in wide range of
Asset Classes



37 Years of
Professional
Services



1700+ Business
Partners



2,70,000 +
Customers

INDEX

About mastertrust

Snapshot

➤ **Wide range of Trading & Investment Solutions**

Presence Across India

Online & Offline Broking Share Ratio

Financial Highlights

WIDE RANGE OF TRADING & INVESTMENT SOLUTIONS

mastertrust offers a wide range of Wealth Products & Trading Solutions.

Online Trading

- Instant Trading & Demat Account
- Trading in Equity, Currency & Commodity
- Personalised Pricing Plans
- Reports & Analysis

Fixed Income Securities

- Tax Free bonds, PSU & Corporate Bonds, Sovereign Gold Bonds & Corporate FDs

Mutual Funds

- Access to Top Mutual Funds
- Expert Assistance
- Reports & Analysis

PMS

- Personalised Assistance
- In-House & Outsourced products
- Market & research based products

Insurance

- Compare & Buy from the bucket of the leading Insurance products
- Life, Health & General Insurance

Structured Products

- Real estate funds & private equity

INDEX

About mastertrust

Snapshot

Wide range of Trading & Investment Solutions

➤ **Presence Across India**

Online & Offline Broking Share Ratio

Financial Highlights

PRESENCE ACROSS INDIA

Andhra Pradesh	Karnataka
Assam	Madhya Pradesh
Bihar	Maharashtra
Chandigarh	Orissa
Chhattisgarh	Punjab
Delhi	Rajasthan
Gujarat	Tamil Nadu
Haryana	Telangana
Himachal Pradesh	Uttar Pradesh
Jammu and Kashmir	Uttarakhand
Jharkhand	West Bengal



INDEX

About mastertrust

Snapshot

Wide range of Trading & Investment Solutions

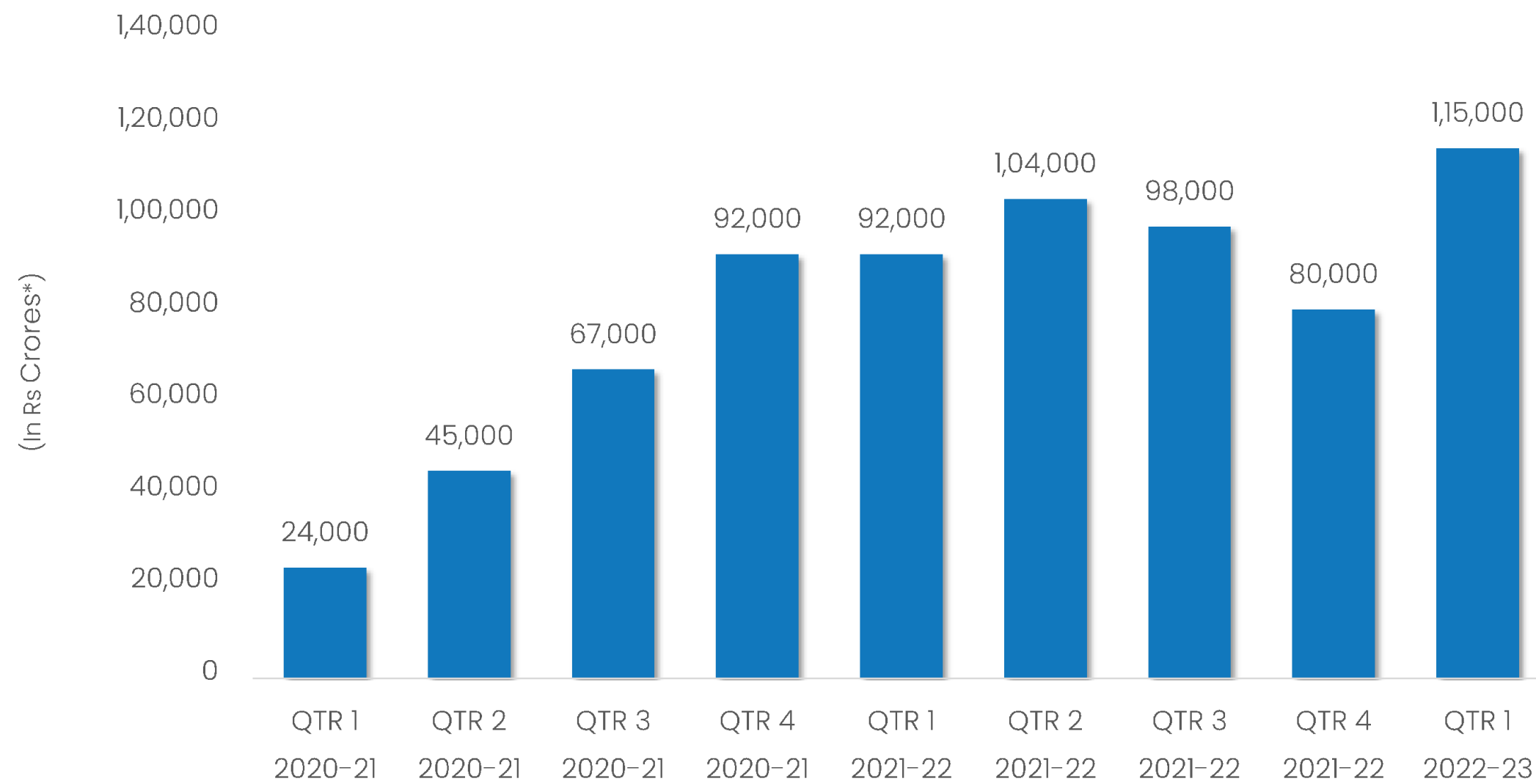
Presence Across India

➤ **Daily Average Trading Turnover**

Online & Offline Broking Share Ratio

Financial Highlights

DAILY AVERAGE TRADING TURNOVER (QOQ)



INDEX

About mastertrust

Snapshot

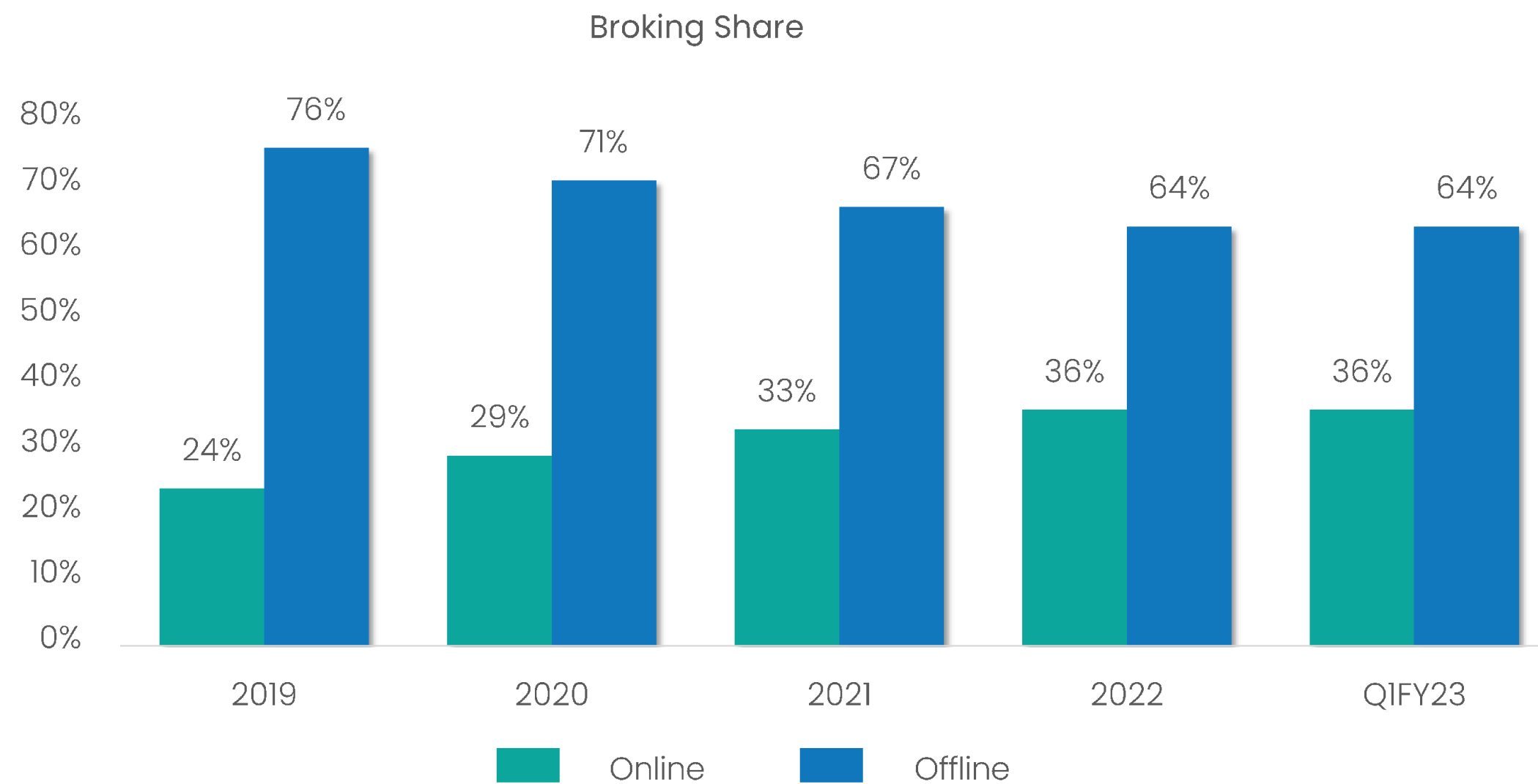
Wide range of Trading & Investment Solutions

Presence Across India

➤ **Online & Offline Broking Share Ratio**

Financial Highlights

ONLINE & OFFLINE BROKING SHARE RATIO



INDEX

About mastertrust

Snapshot

Wide range of Trading & Investment Solutions

Presence Across India

Online & Offline Broking Share Ratio

➤ **Financial Highlights**

CONSOLIDATED FINANCIAL HIGHLIGHTS

(In Rs. Millions)

Particulars	Quarter Ended 30th June, 2022	Quarter Ended 30th June, 2021	Quarter Ended 31st March, 2022	Year Ended 31st March, 2022
Total Income	794.4	732.3	810.9	3313.7
EBITDA	247.6	224.5	265.8	1090.6
Profit Before Tax	178.4	146.9	187.7	719.3
Profit After Tax	134.4	120.0	141.2	551.8
EPS	6.2	5.5	6.5	25.4

*EPS is calculated on Face Value of Rs. 5 each per share.

CONSOLIDATED GROWTH NUMBERS

From QIFY22
to QIFY23



Total Income
increased by

8.5%



EBITDA
Increased by

10.3%



PBT
increased by

21.4%



PAT
increased by

12.0%

DISCLAIMER

This information may contain certain forward-looking statements/details in the current scenario and contains selected information about the activities of “Master Trust Limited” (the “Company”) and its subsidiaries (the “Group”) as at the date of the presentation. It does not purport to present a comprehensive overview of the Group or contain all the information necessary to evaluate an investment in the Company. This is for information purposes only and is not a prospectus, disclosure document or other offering document under any law, nor does it form part of any present or future invitation, recommendation or offer to purchase or sell securities of the Group in any jurisdiction. No part of this information, nor the fact of its distribution, should form the basis of, or be relied on in connection with any contract or commitment or investment decision whatsoever. In addition, as this contains general, summary and selected information about the Group, it may omit material information about the Group and is not a complete description of the Group’s business and the risks relating to it. Therefore, this information should not form the basis of any investment decision to purchase or sell the Group’s securities. The Company under takes no obligation to publicly update or revise any of the opinions or forward looking statements expressed in this section, consequent to new information, future events or otherwise.



Call us :
0120-6223333

Write to us :
helpdesk@mastertrust.co.in

Website :
www.mastertrust.co.in

Registered Office :
Master Trust Ltd.
Master Chambers, SCO-19,
Feroze Gandhi Market, Ludhiana-141001