

MTL/SEC/2022-23/50

Date: 03.02.2023

To,  
The Secretary,  
Bombay Stock Exchange Limited,  
Floor 25, P. J. Towers  
Dalal Street  
Mumbai- 400001 (MH)

Dear Sir/Madam,  
**SCRIP Code No.: 511768 (MASTERTR)**

Subject: **GLIMPSE OF FINANCIAL PERFORMANCE AND HIGHLIGHTS FOR THE QUARTER AND NINE MONTHS ENDED DECEMBER 31, 2022.**

In pursuance to the provisions of Regulations 30 of SEBI (Listing Obligations and Disclosure Requirements) Regulations, 2015, please find attached herewith Glimpse of Financial Performance and highlights for the Quarter and nine months ended December 31, 2022.

You are requested to take the above information on your records.

Thanking You

Yours Faithfully  
For Master Trust Limited

VIKAS  
GUPTA

Vikas Gupta  
Company Secretary and Compliance Officer

Digitally signed by VIKAS GUPTA  
DN: cn=Vikas Gupta, o=Master Trust Limited, email=vikas.gupta@mastertrust.co.in, c=IN  
c=IN, o=Master Trust Limited, email=vikas.gupta@mastertrust.co.in, c=IN  
6623118111020220203172156+05'50'  
Reason: I am the signer of this document.  
Date: 2023.02.03 17:21:56 +05'50'

Encl.: as above

**MASTER TRUST LTD**

CIN: L65991PB1985PLC006414

Regd. Office: Master Chambers, 19 Feroze Gandhi Market, Ludhiana-141001 • Tel.: 0161-3911500 • Fax: 0161-2402963

Corporate Office: 1012, 10th Floor, Arunachal Building, 19, Barakhamba Road, New Delhi-110001 • Tel.: 011-42111000 • Fax: 011-42111040

Email: [secretarial@mastertrust.co.in](mailto:secretarial@mastertrust.co.in) • Website: [www.mastertrust.co.in](http://www.mastertrust.co.in)

# Highlights

Q3 FY2022-2023



# Index

## ➤ About mastertrust

Snapshot

Wide range of Trading & Investment Solutions

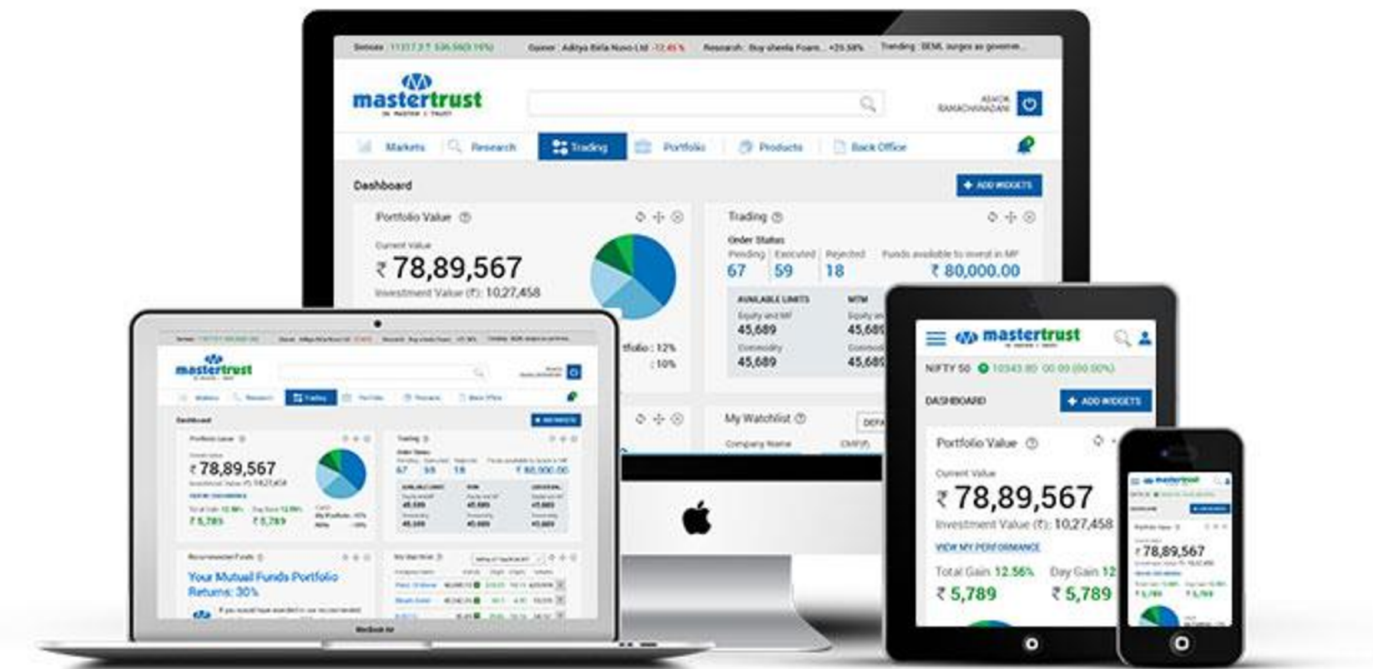
Presence Across India

Online & Offline Broking Share Ratio

Financial Highlights

# About us

mastertrust Group is one of India's leading diversified financial services conglomerate. It provides a broad range of financial products and services to individuals and corporates. Established in 1985, mastertrust Group has been driven by a vision to be a well-diversified financial shop for wealth creation and to be an ideal service provider in the domain of business.



# Index

About mastertrust

## ➤ Snapshot

Wide range of Trading & Investment Solutions

Presence Across India

Online & Offline Broking Share Ratio

Financial Highlights

# Snapshot



One of the leading Brokers in Indian Market



1000+ Employees



Offer Opportunities in wide range of Asset Classes



37 Years of Professional Services



1700+ Business Partners



3,00,000 + Customers

# Index

About mastertrust

Snapshot

➤ **Wide range of Trading & Investment Solutions**

Presence Across India

Online & Offline Broking Share Ratio

Financial Highlights

# Wide Range of Trading & Investment Solutions

mastertrust offers a wide range of Wealth Products & Trading Solutions.

## Online Trading

- Instant Trading & Demat Account
- Trading in Equity, Currency & Commodity
- Personalised Pricing Plans
- Reports & Analysis

## Fixed Income Securities

- Tax Free bonds, PSU & Corporate Bonds, Sovereign Gold Bonds & Corporate FDs

## Mutual Funds

- Access to Top Mutual Funds
- Expert Assistance
- Reports & Analysis

## PMS

- Personalised Assistance
- In-House & Outsourced products
- Market & Research based products

## Insurance

- Compare & Buy from the bucket of the leading Insurance products
- Life, Health & General Insurance

## Structured Products

- Real estate funds & private equity



# Index

About mastertrust

Snapshot

Wide range of Trading & Investment Solutions

➤ **Presence Across India**

Online & Offline Broking Share Ratio

Financial Highlights

# Presence Across India

|                   |                |
|-------------------|----------------|
| Andhra Pradesh    | Karnataka      |
| Assam             | Madhya Pradesh |
| Bihar             | Maharashtra    |
| Chandigarh        | Orissa         |
| Chhattisgarh      | Punjab         |
| Delhi             | Rajasthan      |
| Gujarat           | Tamil Nadu     |
| Haryana           | Telangana      |
| Himachal Pradesh  | Uttar Pradesh  |
| Jammu and Kashmir | Uttarakhand    |
| Jharkhand         | West Bengal    |



# Index

About mastertrust

Snapshot

Wide range of Trading & Investment Solutions

Presence Across India

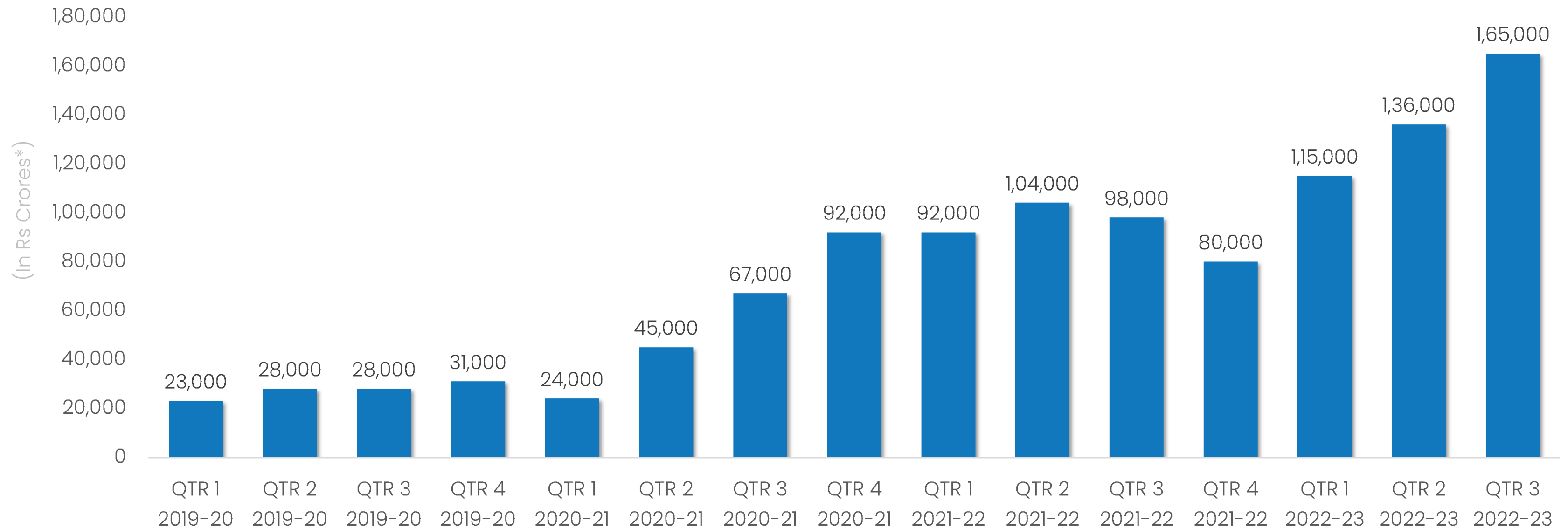
➤ **Daily Average Trading Turnover**

Online & Offline Broking Share Ratio

Financial Highlights

# Daily Average Trading Turnover (QOQ)

In Daily Average Trading Turnover, the options turnover is based on Strike plus Premium basis



\*Gross Value rounded off to '000

# Index

About mastertrust

Snapshot

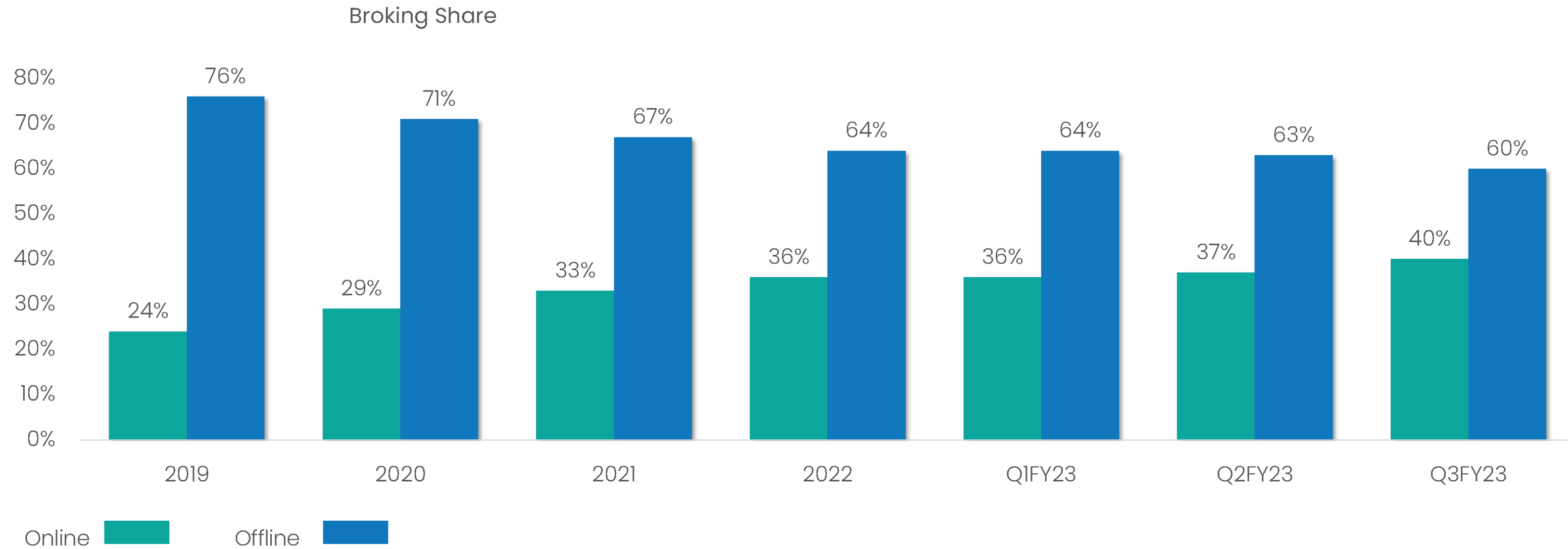
Wide range of Trading & Investment Solutions

Presence Across India

➤ **Online & Offline Broking Share Ratio**

Financial Highlights

# Online & Offline Broking Share Ratio



# Index

About mastertrust

Snapshot

Wide range of Trading & Investment Solutions

Presence Across India

Online & Offline Broking Share Ratio

➤ **Financial Highlights**

# Consolidated Financial Highlights

(In Rs. Millions)

| Particulars       | Quarter Ended<br>31st Dec,2022 | Quarter Ended<br>31st Dec,2021 | Nine Months Ended<br>31st Dec,2022 | Nine Months Ended<br>31st Dec,2021 |
|-------------------|--------------------------------|--------------------------------|------------------------------------|------------------------------------|
| Total Income      | 871.2                          | 844.3                          | 2482.4                             | 2502.8                             |
| EBITDA            | 321.3                          | 266.7                          | 873.7                              | 824.8                              |
| Profit Before Tax | 231.1                          | 173.0                          | 631.1                              | 531.6                              |
| Profit After Tax  | 187.5                          | 132.3                          | 492.4                              | 410.6                              |
| EPS               | 8.6                            | 6.1                            | 22.6                               | 18.9                               |

\*EPS is calculated on Face Value of Rs. 5 each per share.



# Consolidated Growth Numbers

From Q3FY22  
to Q3FY23



Total Income  
increased by

3.2%



EBITDA  
Increased by

20.5%



PBT  
increased by

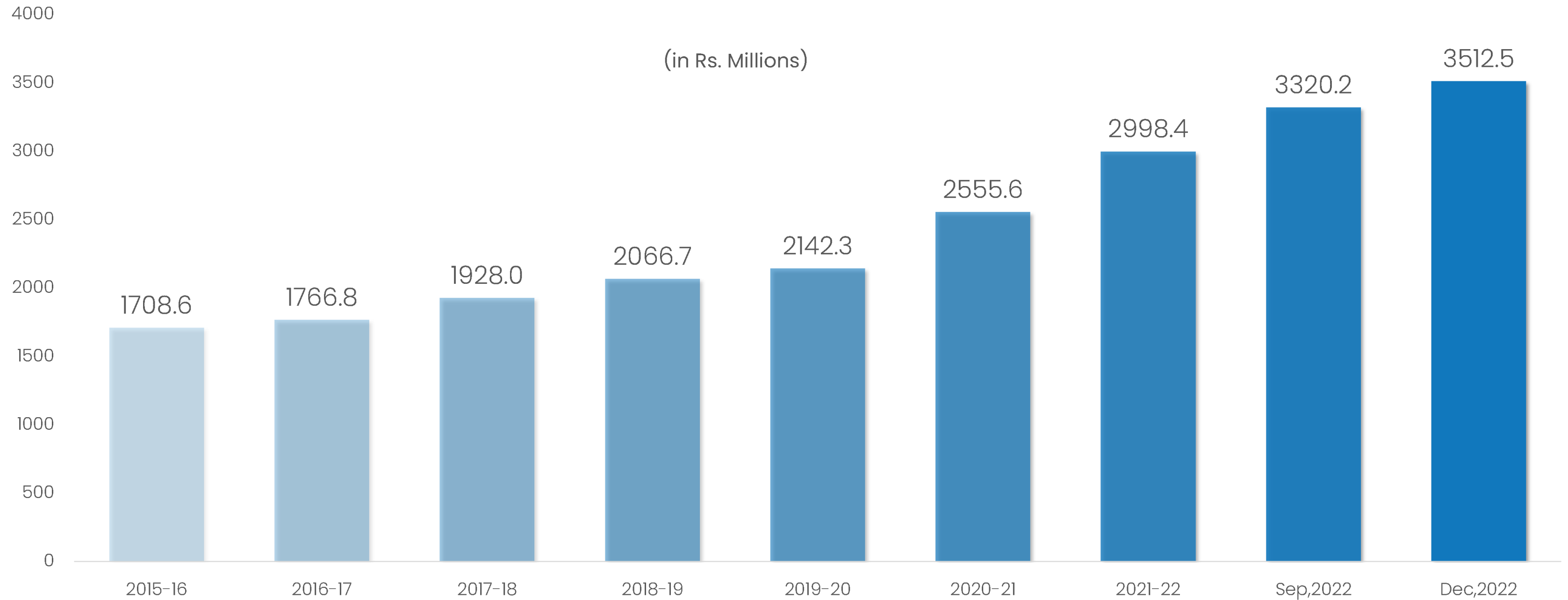
33.6%



PAT  
increased by

41.7%

# Net Worth



# Disclaimer

This information may contain certain forward-looking statements/details in the current scenario and contains selected information about the activities of “Master Trust Limited” (the “Company”) and its subsidiaries (the “Group”) as at the date of the presentation. It does not purport to present a comprehensive overview of the Group or contain all the information necessary to evaluate an investment in the Company. This is for information purposes only and is not a prospectus, disclosure document or other offering document under any law, nor does it form part of any present or future invitation, recommendation or offer to purchase or sell securities of the Group in any jurisdiction. No part of this information, nor the fact of its distribution, should form the basis of, or be relied on in connection with any contract or commitment or investment decision whatsoever. In addition, as this contains general, summary and selected information about the Group, it may omit material information about the Group and is not a complete description of the Group’s business and the risks relating to it. Therefore, this information should not form the basis of any investment decision to purchase or sell the Group’s securities. The Company under takes no obligation to publicly update or revise any of the opinions or forward looking statements expressed in this section, consequent to new information, future events or otherwise.



**Call us**  
0120-6223333

**Write to us**  
[helpdesk@mastertrust.co.in](mailto:helpdesk@mastertrust.co.in)

**Website**  
[www.mastertrust.co.in](http://www.mastertrust.co.in)

**Registered Office**  
Master Trust Ltd.  
Master Chambers, SCO-19, Feroze  
Gandhi Market, Ludhiana-141001