



APL/SECT/DLH/SE: 2021-22

13th September 2021

Electronic Filing

National Stock Exchange of India Limited
"Exchange Plaza" Bandra-Kurla Complex,
Bandra (E),
Mumbai-400051

Department of Corporate Services/Listing
BSE Limited
Phiroze Jeejeebhoy Tower,
Dalal Street, Fort,
Mumbai-400001

NSE Symbol : APLAPOLLO

Scrip Code : 533758

Dear Sir/Madam,

Re: Stock Exchange Release

Enclosed herewith please find copy of Exchange Release being made by the Company today titled "Patent Office grants registrations to 6 innovative products of APL Apollo Tubes Limited".

We request you to kindly take the above information on your record.

Thanking you

Yours faithfully
For APL Apollo Tubes Limited

Deepak C S
Company Secretary

Encl: a/a

APL Apollo Tubes Limited (CIN-L74899 DL 1986PLC023443)

Regd. Office : 37, Hargovind Enclave, Vikas Marg, Delhi - 110092, India Tel: +91-11-2237 3437 | Fax : +91-11-2237 3537

Corp. Office : 36, Kaushambi, Near Anand Vihar Terminal, Delhi (NCR) -201010, India Tel: +91-120-4041 400/401/402 | Fax : +91-120-4041 444

Corp. Office : Tapasya Corp. Heights, 4th Floor, Tower-A, Sector-126, Noida, Uttar Pradesh - 201303, India Tel: +91-120 4742 700/701

Unit - 1: A-19, Industrial Area, Sikandrabad, Distt. Bulandshahar, U.P.-203205, India, Unit-2 : 332-338, Alur Village, Perandapolli, Hosur, Tamilnadu-635109, India

Unit - 3 : Plot No. M-1, Additional M.I.D.C. Area, Kudavali, Murbad, Maharashtra, Thane-421401, India, Unit-4 : Village Bendri Near Urla Indl. Area Raipur, Chhattisgarh-493661, India

E-mail : info@aplapollo.com Web : www.aplapollo.com

Media Release

Patent Office grants registrations to 6 innovative products of APL Apollo Tubes Limited

New Delhi, September 13, 2021: The Office of the Controller General of Patents, Designs & Trademarks has recently granted six registrations to the innovative products of APL Apollo Tubes Limited. With these fresh registrations, the overall portfolio of these registrations for APL Apollo Tubes has risen to 15.

This is an affirmation of our innovative aspiration to redefine how infrastructure development is planned in India. Structural Tubes provide the ability to design with flexibility, without compromising on the durability and strength of the structure. In addition to this, construction with Tubular Steel Structures is faster with better seismic resistance and the resultant structure has higher carpet area, all at substantially lesser costs than conventional construction models, including RCC structures. Moreover, Tubular constructions are more sustainable and environment friendly, without any water or air pollution emanating due to the construction process, thus aligning well with the Ministry of Steel's rallying call of *#SteelForGreen*. The National Infrastructure Pipeline along with the recently announced National Monetization Pipeline place us at the cusp of history where we reimagine infrastructure development for a self-reliant India, an *Atmanirbhar Bharat* with designs specifically catering to its rapid growth potential.

With more than 50% market share and production capacity of 2.6 MT, APL Apollo is very excited to play its part in the process.

New Registrations & their Uses



Roadside Reflectors



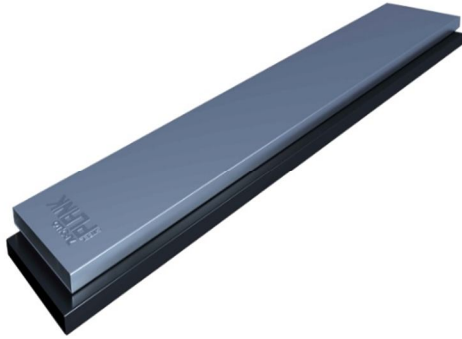
Fence



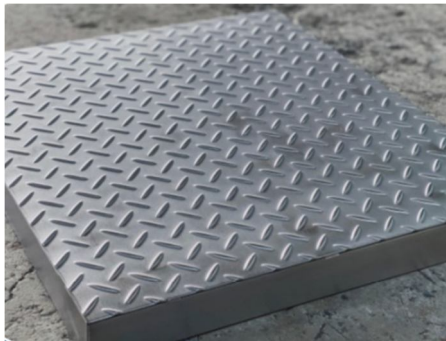
Oval



Octagon



Plank



Chequered