

MSIL: COS: NSE&BSE: 2023/07_03

5th July, 2023

Vice President
National Stock Exchange of India Limited
“Exchange Plaza”, Bandra – Kurla Complex
Bandra (E)
Mumbai – 400 051

General Manager
Department of Corporate Services
BSE Limited
Phiroze Jeejeebhoy Towers
Dalal Street, Mumbai – 400 001

Sub: Press Release

Dear Sirs,

Please find enclosed herewith as Annexure -"A", a copy of the press release being issued today.

Kindly take the same on record.

Thanking you,

Yours truly,

For Maruti Suzuki India Limited

Sanjeev Grover
Executive Vice President
& Company Secretary

MARUTI SUZUKI INDIA LIMITED

Head Office:

Maruti Suzuki India Limited,
1, Nelson Mandela Road, Vasant Kunj,
New Delhi - 110070, India.

Tel: 011- 46781000, Fax: 011-46150275/46150276

E-mail id: contact@maruti.co.in, www.marutisuzuki.com

Gurgaon Plant:

Maruti Suzuki India Limited,
Old Palam Gurgaon Road,
Gurgaon - 122015, Haryana, India.

Tel: 0124-2346721, Fax: 0124-2341304

Manesar Plant:

Maruti Suzuki India Limited,
Plot No.1, Phase - 3A, IMT Manesar,
Gurgaon - 122051, Haryana, India.

Tel: 0124-4884000, Fax: 0124-4884199

Press Release

Maruti Suzuki Launches the INVICTO: A New Era of Luxury, Starting at Rs. 24.79 lakh

- *Premium three-row UV with bold impression of an SUV with 7 & 8-seater configuration.*
- *Crafted with NEXA's design philosophy of Crafted Futurism.*
- *Revolutionary Intelligent Electric Hybrid powertrain with 2.0L engine and e-CVT transmission for an exceptional fuel-efficiency of 23.24 km/l.**
- *Advanced Safety: 6 SRS Airbags, 3-point ELR Seatbelts, 360 View Camera, Suzuki Connect with e-Call functionality, All Disc Brakes, Tyre Pressure Monitoring System (TPMS) and more.*
- *Enhanced comfort and convenience through an array of utility features such as Powered Driver Seat with Memory Function, Power Tailgate, Electronic Parking Brake, etc.*



New Delhi, 5th July, 2023: Maruti Suzuki's premium channel - NEXA expands its horizons with the launch of the INVICTO, a premium three row UV with **the bold impressions of an SUV**. The INVICTO is tailored to NEXA's standards of premiumness and raises the bar for automotive opulence with its bold exteriors and upscale interior.

Drawing from the philosophy of being a 'Symbol of Prestige', the INVICTO presents an attractive exterior design that brings design unification to our recent and highly successful line of NEXA vehicles. Its strong appearance conveys a distinct visual language, elevating its exceptional road presence. On the inside, the vehicle immerses you in a world of luxury and refinement. It offers superlative space and comfort and comes equipped with a revolutionary self-charging hybrid electric powertrain for lower emissions, delivering an exceptional fuel-efficiency. With its incredible cabin space and creature comforts, the INVICTO is designed to pamper even the most discerning customers and offers them the flexibility of serving as a luxurious escort, as well as a perfect companion for weekend getaways. The luxurious INVICTO harmoniously integrates NEXA's signature design philosophy of 'Crafted Futurism', encapsulating **NEXpression, NEXtech, and NEXperience**, a fusion of sophisticated design, advanced technology, and practical utility to ensure seamless convenience for our valued customers.

Speaking on this momentous occasion, **Mr. Hisashi Takeuchi, Managing Director & CEO, Maruti Suzuki India Limited**, said *"Our entry into the premium three row UV segment with the launch of the INVICTO adds a new dimension to NEXA's portfolio and to Maruti Suzuki as a brand. With its SUV-like character, our*

new INVICTO delivers a combination of premium design, intelligent packaging, and an abundance of safety features and innovation. With its revolutionary Intelligent Electric Hybrid System, INVICTO will further MSIL's vision of a cleaner, greener, sustainable and carbon neutral world. The INVICTO's impeccable craftsmanship and versatility will indeed set a new benchmark and further fortify NEXA's positioning."

Exuding NEXpression through artfully designed interiors and exteriors, crafted to perfection



Bold and Striking

INVICTO exudes the robust appeal of a Modern SUV with its strong, rugged and upright stance accentuated with dynamic character lines. The strong presence is further amplified by its striking front fascia featuring distinctive NEXA signature elements including the NEXwave front grille with a sweeping cross bar that seamlessly connects the twin LED headlamps, which are integrated with NEXTre' LED DRLs. Further, the NEXTre' LED tail lamps in the rear make a bold statement of NEXA's design identity. The commanding road presence and the SUV-inspired stance is

enhanced by its squared wheel arches housing the R17 (17-inch) precision cut alloy wheels.



Indulge in Opulence

The INVICTO is conceptualized to offer high quality interior space and comfort, akin to an MPV. The wide sweeping instrument panel is accentuated with rich detailing, exuding a sense of string luxury. The sophisticated all-black interiors with rich Champagne Gold accents offer a contemporary look and further elevates elegance. The premium hand-crafted look is amplified by adding soft touch leatherette material and with premium stitch lines across high touch areas, adding to the sophistication in every detail. The seats are adorned with textured plush covers. A dual-zone climate control for front & rear rows delivers personalised comfort.

Driven by NEXtech Technologies



Revolutionary Intelligent Electric Hybrid Powertrain

In-line with Suzuki's global vision of carbon footprint reduction and also to meet the needs of evolving Indian customers, INVICTO features the revolutionary "Intelligent Electric Hybrid" system with a 2.0L engine coupled with an e-CVT transmission. This innovative self-charging Strong Hybrid system incorporates a sophisticated Dual Powertrain System, combining an electric motor and a petrol engine. The instant torque from the self-charging Intelligent Electric

Hybrid system offers superior responsiveness and acceleration while delivering an exceptional fuel-efficiency of 23.24km/l*.

With its eco-friendly and reliable nature, the Strong Hybrid system offers multiple drive modes (EV, Normal, Eco, and Power) that allows seamless transition between the engine, hybrid and electric drive modes. The setup can also harness the combined power of both sources depending on the driving situation. Moreover, the hybrid system continuously monitors driving conditions to intelligently coordinate with both the power sources as and when required for a spirited yet sustainable drive.

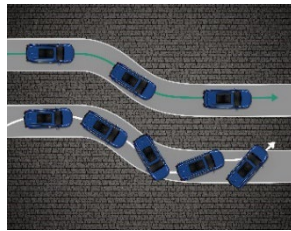
The INVICTO's Intelligent Electric Hybrid battery comes with a standard warranty of 8 years/1,60,000 Kms on the NiMH (Nickel-Metal Hydride) battery pack.

Setting New Standards for Safety



INVICTO prioritizes customer safety by incorporating a comprehensive range of active and passive safety features as part of the **NEXA Safety Shield**.

- 6 Airbags as standard (Front, Side and Curtain)
- Suzuki Connect with Advanced Features and e-Call Functionality[^]
- Front and Rear Disc brakes
- Electronic Parking Brake with Auto Hold
- ABS with EBD
- Vehicle Stability Control with Hill Hold Assist
- 3-point ELR Seatbelts[#]
- ISOFIX child seat anchorages



Apart from this, the 360 view camera with dynamic guidelines ensures peace of mind while maneuvering in tight conditions. Additionally, the vehicle is equipped with a Tyre Pressure Monitoring System

(TPMS) to enhance safety and enable an optimum drive experience. With its revolutionary powertrain and new standards of safety, INVICTO is the latest revolutionary of NEXtech.

Revolutionizing Customer Experiences with NEXperience

The INVICTO offers a wide range of features to indulge customers in NEXperience like never before:

- **Offers Premium and Up-market Ambience:** Panoramic sunroof with ambient lighting, soft touch on instrument panel with premium stitching, plush leatherette seats, champagne gold accents in the cabin.
- **Provide Superlative Comfort and Convenience:** 7 and 8-seater configuration, 8-way powered driver seat with memory function, ventilated front seats, dual-zone AC, rear door sunshade⁺, IR cut windshields, powered tailgate, 360 view monitor, rear door sunshade and more.

- **New-Age Connectivity with Next-Gen Multimedia and Infotainment:** 25.65cm (10.1-inch) touchscreen infotainment systems, 6-speaker audio, in-built Suzuki Connect Technology with remote functionalities and 50+ connected features such as e-Care, remote power window close, remote seat ventilation, e-call, etc. Alexa connectivity with 30+ features, smartwatch connectivity, 17.78cm (7-inch) colored multi-information display with drive mode themes and Eco Score indicator in the instrument cluster.



- **Design Focused on Practical Utility by Offering:**

Versatile cabin with flexible seating, multiple storage spaces such as bottle holders in each row, retractable cooled cupholders on the dashboard, illuminated cup holders, illuminated storage spaces, folding side table in second row captain seats, multiple charging ports along with accessory sockets, personal reading lamps and more.

Exclusive Accessory Collection

The all-new Maruti Suzuki INVICTO is complimented by a range of exclusive accessories that enable customers to personalise this premium UV to their tastes. The new range of **Genuine NEXA Accessories** are available for both Alpha+ and Zeta+ variants of the INVICTO in new **Signature Collection**.



Furthering the level of personalisation are a wide range of individual exterior and interior accessories that include Premium Body Cover, ORVM Garnish, Exhaust Garnish, Premium Back Door Garnish, Wheel Arch Moulding, Rear Skid Plate, Seat Covers and All-Weather Mats that will make the INVICTO stand out from the crowd with its unique presence. Lending a touch of technology to the accessory range are the Wireless Phone Charger, Digital Video Recorder and Car Air Purifier.

Also available is the standard NEXA **Comfort Collection** range of accessories that include Seat Belt Cushions, PUROGANIK™ Perfume made from natural extracts and more.

Customers can check out and buy accessories with one-click convenience from the Maruti Suzuki Genuine Accessories website - <https://www.marutisuzuki.com/genuine-accessories>

Array of Sophisticated Colors

NEXA Blue, Mystic White, Majestic Silver and Stellar Bronze.

The ex-showroom prices are as follows:

INVICTO Prices (Ex-showroom in INR)	
Variant	Price
Zeta+ 7-seater	24 79 000
Zeta+ 8-seater	24 84 000
Alpha+ 7-seater	28 42 000

The INVICTO can also be owned through Maruti Suzuki Subscribe at an all-inclusive monthly subscription fee starting from INR 61 860/-. [Click here to subscribe to the Maruti Suzuki INVICTO.](#)

Customers can know more about INVICTO by logging on to <https://www.nexaexperience.com/INVICTO>

[Click here for high resolution images of INVICTO.](#)

Technical Specifications: INVICTO Intelligent Electric Hybrid

INVICTO Technical Specifications				
Overall Length (mm)	4,755	Power	Total System Power	137 kW
			Engine Power	112kW @ 6000 rpm
			Motor Power	83.73kW @ 4000 rpm
Overall Width (mm)	1,845 (Zeta+) 1,850 (Alpha+)	Torque	Engine torque	188Nm @ 4400-5200 rpm
			Motor Torque	206 Nm
Overall Height (mm)	1,795 (Zeta+) 1,790 (Alpha+)	Fuel Efficiency		23.24 km/l*
Wheelbase (mm)	2,850	Fuel Tank Capacity		52 litres
Tyre Size	215/60R17 (Spare: 205/65R16)	Suspension		Front: Macpherson Strut Rear: Torsion Beam

*Fuel-efficiency as certified by test agency under Rule 115 of CMVR, 1989 (CMVR is an acronym for Central Motor Vehicles Rules, 1989).

^For details of functioning and limitation of E-Call functionality, kindly refer to terms and condition of Suzuki Connect application.

^Rear Seat Belt Reminder (RSBR) on select variants.

*Should be used in compliance with the applicable rules/acts.

For details on functioning of safety features, including airbag, Intelligent Electric Hybrid Li-ion kindly refer to the Owner's Manual.

Images used are for illustration purposes only. The accessories and features mentioned may be applicable for specific models/variants only. Colors may vary from actual body color due to printing on paper.