

SYLPH EDUCATION SOLUTIONS LIMITED

Regd. Off: Second Floor, 448-D, Scheme No.51,
Sangam Nagar, Indore, (M.P.)-452006
E-mail: sylphedu@gmail.com; mhfl@bsnl.in;
info@sylphedu.com URL: www.sylphedu.ltd
CIN: L80302MP2010PLC023011



Date: 31/12/2021

To,
Listing Department,
BSE Limited,
P J Tower, Dalal Street
Mumbai-400001

Dear Sir/Madam,

Sub: Kindly update the website of the company on Corporate Information on BSE Portal.

With reference to the captioned subject we want to update the following details:

- 1.) The website of the company is <http://www.sylphedu.ltd>

Date: 31/12/2021

This is for your information and record

Listing Department

Thanking You,

P J Tower, Dalal Street

Yours Faithfully

FOR, SYLPH EDUCATION SOLUTIONS LTD



DIRECTOR/AUTHORISED SIGNATORY

The website of the company is <http://www.sylphedu.ltd>

Date: 31/12/2021

This is for your information and record

Listing Department

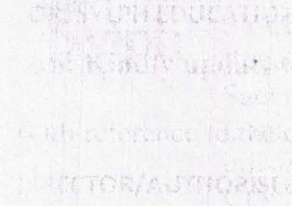
Thanking You,

P J Tower, Dalal Street

Mumbai-400001

Yours Faithfully

FOR, SYLPH EDUCATION SOLUTIONS LTD



DIRECTOR/AUTHORISED SIGNATORY

The website of the company is <http://www.sylphedu.ltd>