

BOMBAY STOCK EXCHANGE LIMITED PHIROZE JEEJEEBHAY TOWERS DALAL STREET MUMBAI - 400001	NATIONAL STOCK EXCHANGE OF INDIA LIMITED "EXCHANGE PLAZA" BANDRA KURLA COMPLEX BANDRA (E) MUMBAI - 400051
Scrip Code: 522074	Scrip Code: ELGIEQUIP

E:SEC: 1028

DATE: 28/02/2019

Dear Sirs

Sub: Submission of presentation made at the Analysts / Investors Meet on 28/02/2019 as per Regulation 30 of SEBI (Listing Obligations and Disclosure Requirements) Regulation - 2015 - reg.

The presentation made at the Analysts / Investors Meet on 28/02/2019.

Kindly acknowledge the receipt and do the needful to update your records.

Thanking you,

Yours faithfully,
For ELGI EQUIPMENTS LIMITED



VAISHNAVI.P.M
COMPANY SECRETARY

Encl: As above.



Analysts and Investors Meet

Thursday
28 February, 2019

ELGITM
Always Better.

Group History

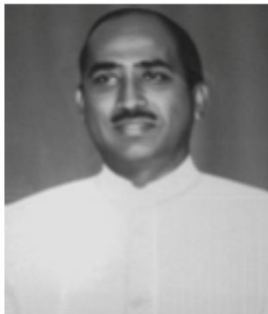


LRG Naidu

Founder

- Born in 1894
- Worked as a ticket collector
- Started a bus company in 1918
- Built a fleet of 300 buses
- Started two airline companies in 1946
- All the businesses were nationalized between 1948 and 1960

The Next Generation



LG Balakrishnan



LG Varadaraj



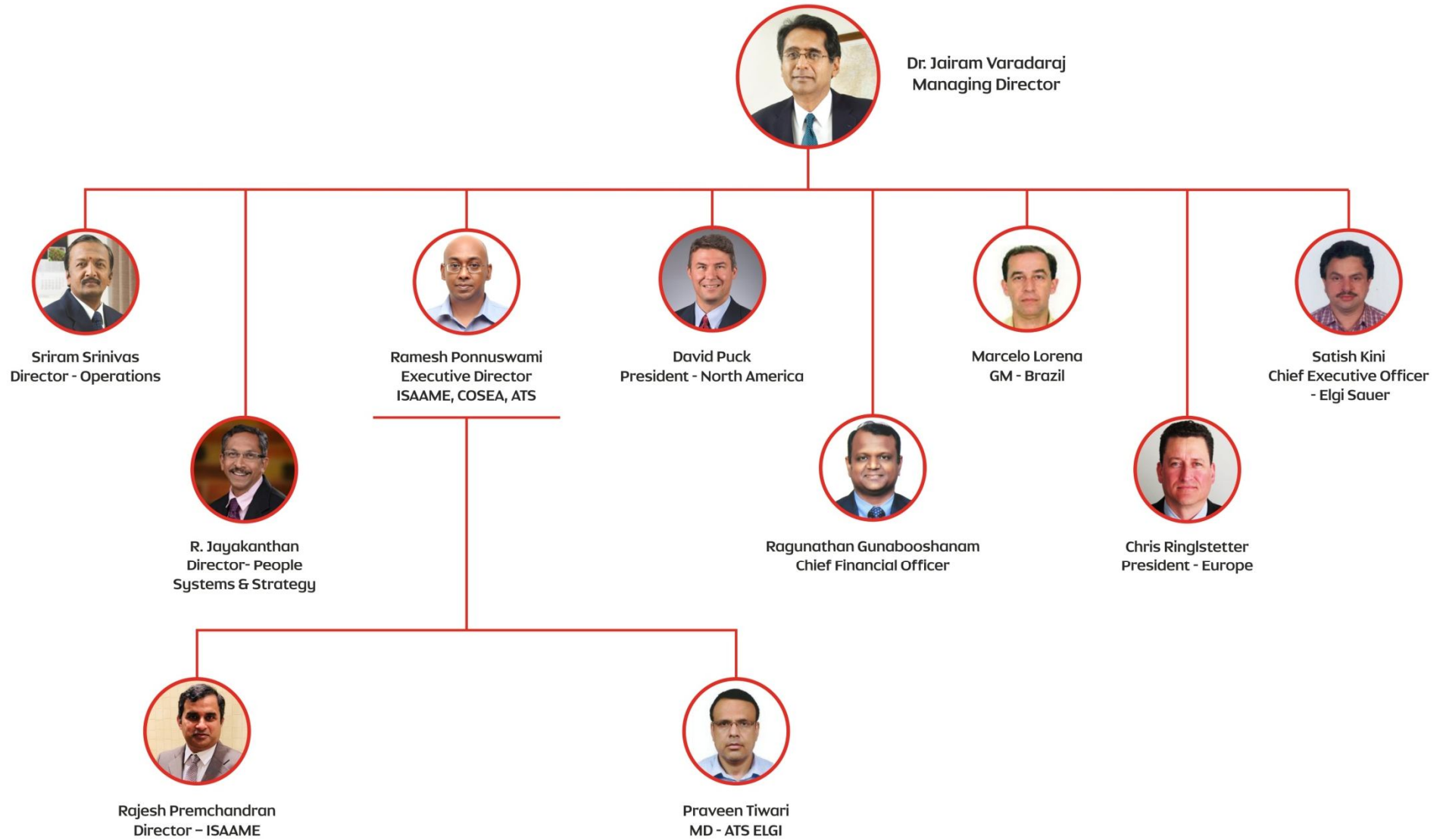
LG Ramamurthi



LG Nityanand

Sons of LRG Naidu who moved the business from services into manufacturing in 1959 and built a group that is today over \$500 Million in revenue

ELGi Leadership



Global Presence

100+

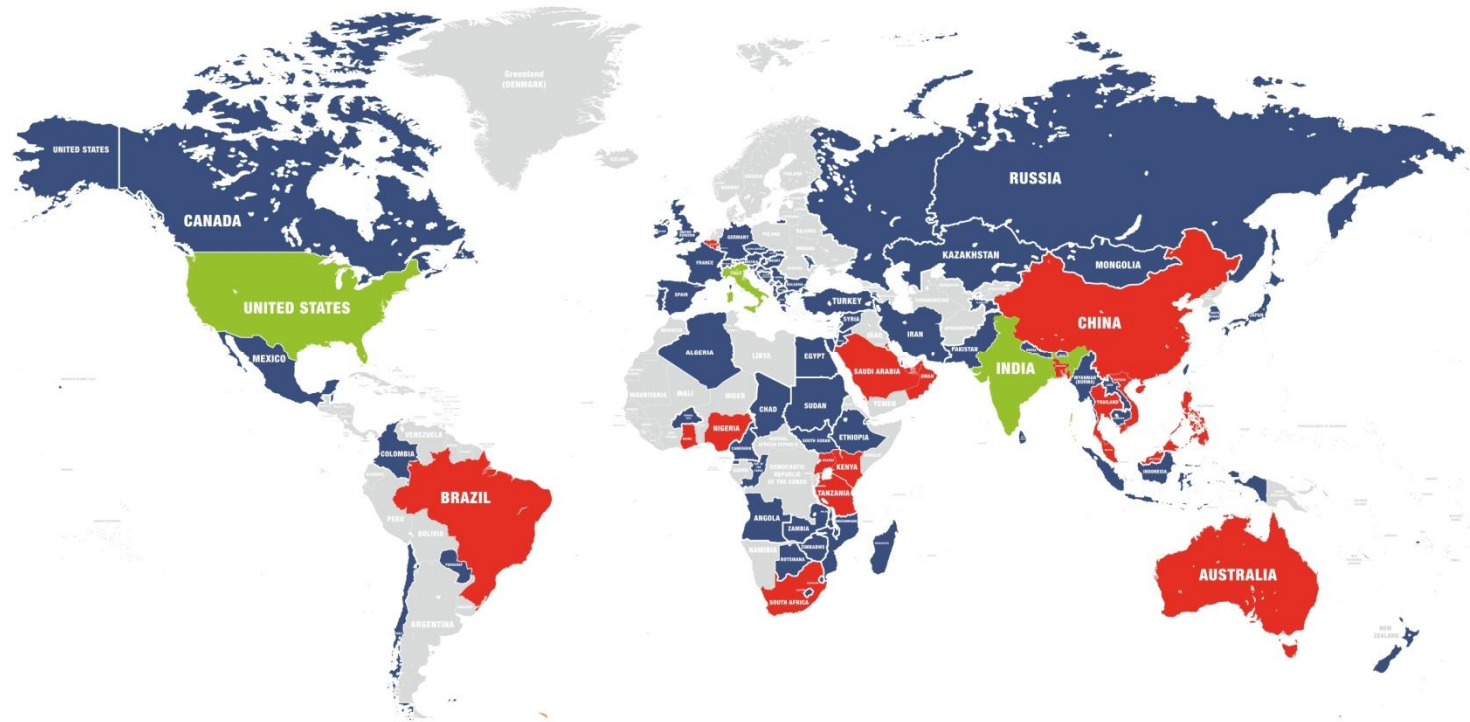
Countries where ELGi does business

20

Countries with direct presence

03

Manufacturing countries



Presence

200

Distributors worldwide

800

Sales people worldwide

1200

Service people worldwide

1500

Employees worldwide

Infrastructure

5,000,000

Square feet of factory land worldwide

1,000,000

Square feet of factory space worldwide

100,000

Square feet of dedicated parts warehouse worldwide

Manufacturing Capability

>5 million sq ft of “Future-ready” manufacturing facilities



COMPRESSOR FACTORY

3 state-of-the-art manufacturing units in the world with high standards of quality and safety



FOUNDRY

Produces high precision grey and SG iron castings



MOTOR MANUFACTURING

State-of-the-art motor manufacturing plant to produce highly efficient and reliable motors for captive consumption



PRESSURE VESSELS PLANT

Produces pressure vessels meeting international standards.

ELGi's Globally renowned vendors



Trademarks of companies acknowledged

Comprehensive Portfolio

Air compressors across the spectrum



EN Series
Encapsulated Screw Air Compressor
2.2 – 75 kW / 8 – 469 CFM



EG Series
Oil Lubricated Screw Air Compressor
11 – 250 kW / 47 – 1612 CFM



OF Series
Oil Free Screw Air Compressor
90 – 450 kW / 572 – 2450 CFM



CG Series
Centrifugal Compressor
450 – 930 kW / 3000 – 5200 CFM



Oil Lubricated Recip
Oil Lubricated Piston Compressor
1.0 – 40 HP / 2.0 – 128 CFM



Oil Free Recip
Oil Free Piston Compressor
1.0 – 75 HP / 1.8 – 300 CFM



PG Series (Electric)
Electric Portable Screw Compressor
22 – 75 kW / 131 – 514 CFM



PG Series (Diesel)
Diesel Powered Screw Compressor
175 – 1500 CFM / 100 – 400 PSI

Complete end-to-end solutions and accessories



- Variable Frequency Drives
- Receivers
- Dryers
- Downstream Filters
- Drain Valves

For all industries and applications



Automotive



Textiles



Pharma



Rice and Pulse



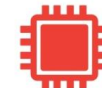
Leather



F & B



Healthcare



Electronics



Paper



Manufacturing



Oil & Gas



Iron & Steel



Mining



Nuclear Plant



Electrical



Aviation



Railways



Construction

Technology Capability – New Arrivals



SINGLE STAGE – AB SERIES

04 – 110 kW

12 – 550 cfm

OIL FREE. DISRUPTED

CLASS-0 ISO 8573-1

WITNESS A REVOLUTION IN OIL FREE
COMPRESSED AIR TECHNOLOGY

OIL FREE. DISRUPTED

ELGi[™]
Always Better.



Visit us at
**Hannover
ComVac 2019**

1st to 5th April

Hall no. 26
Stand no. C-12

Technology Capability – New Arrivals

*Getting ready to launch a completely new series of
Piston Compressors - LD Series*

Current



New



The ELGi Advantage



1

Best Energy Efficiency

2

Lowest Maintenance Cost

3

Highest Uptime

4

Lifetime Warranty Programs

Select Customers - India

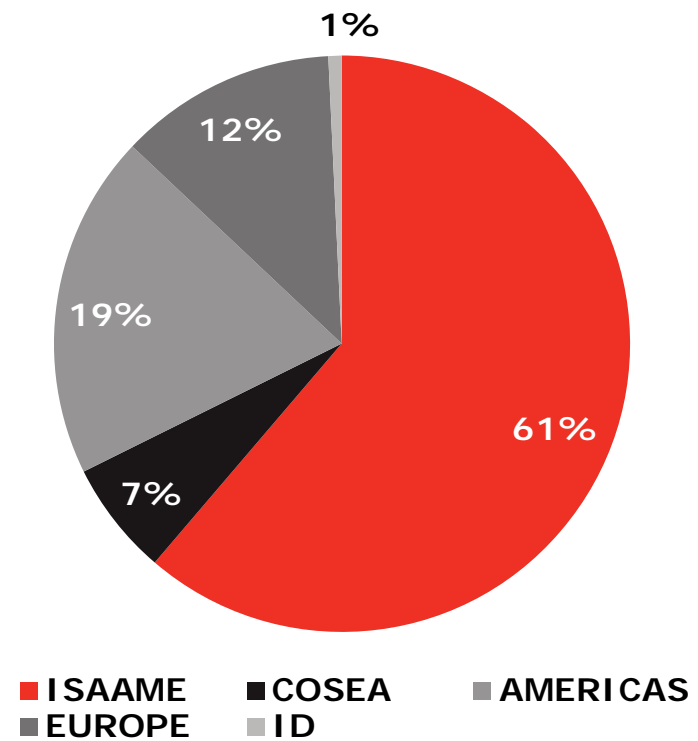
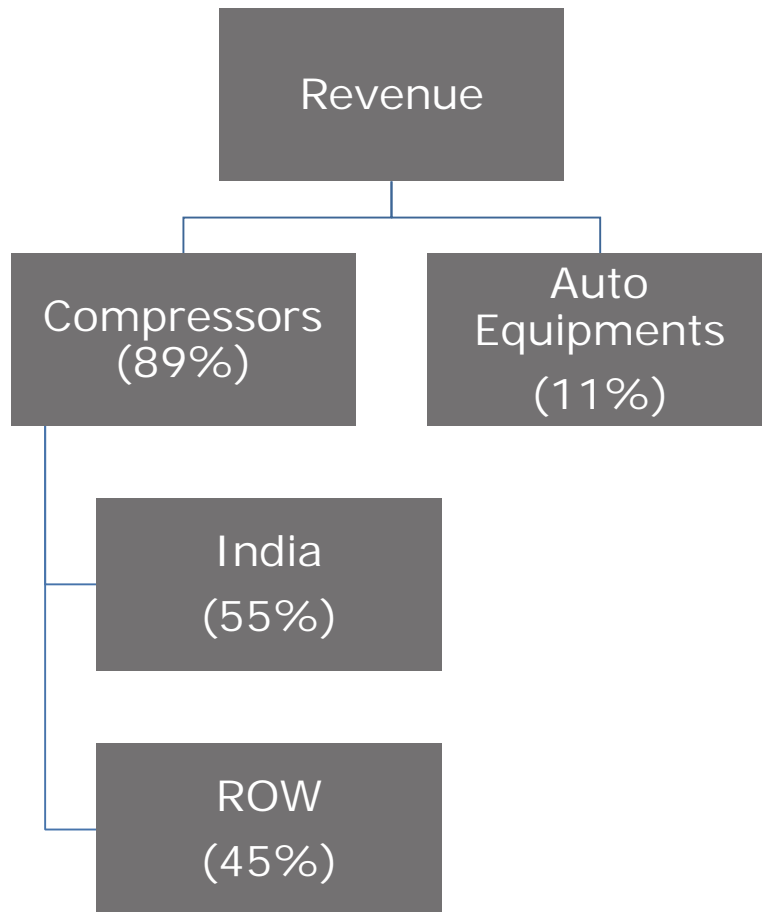
Auto									
Textile									
Pharma									
Cement									
Iron and steel									
Power									
FMCG									
Plastics and Leather									
Other									

Select Customers - Global



and many more..

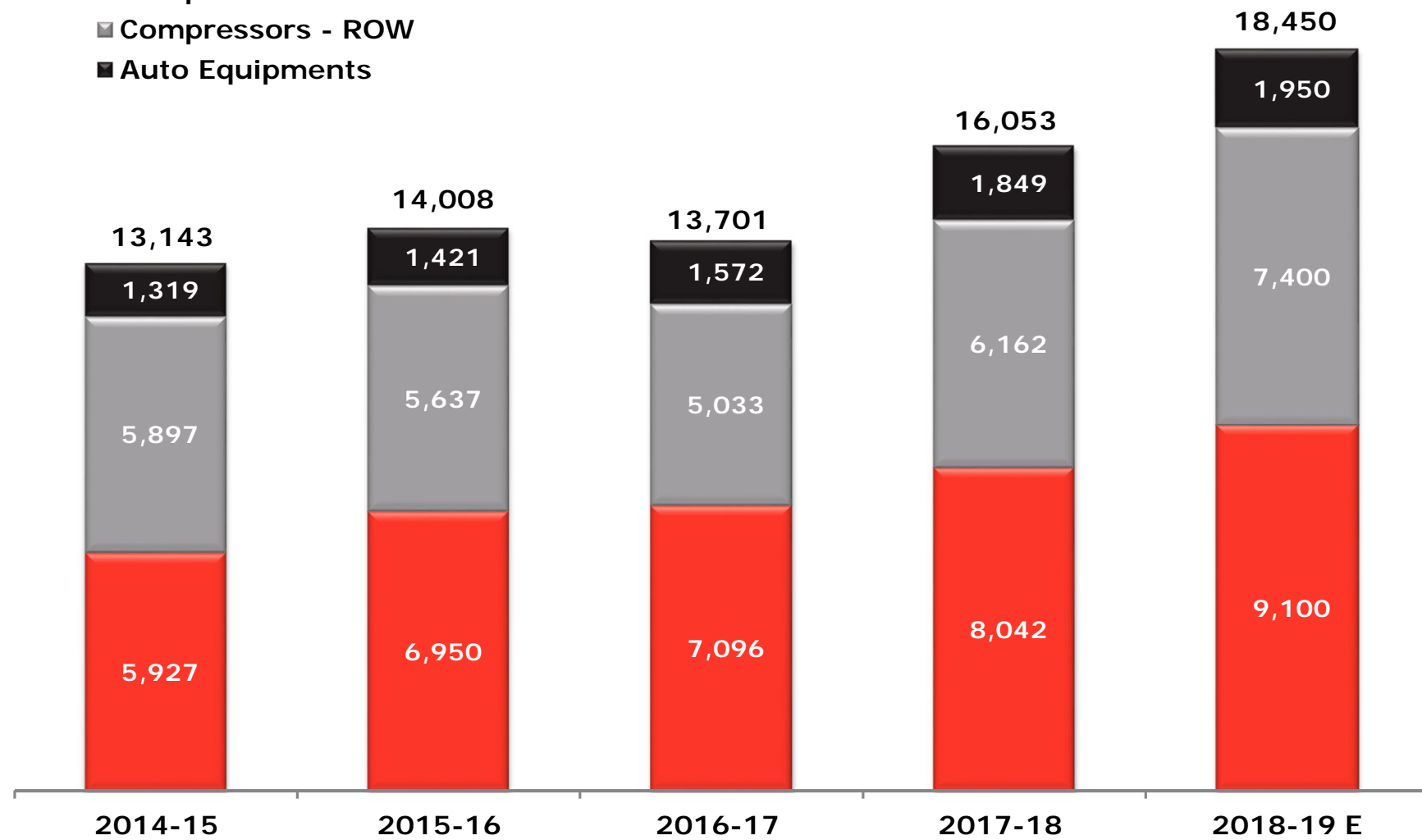
Revenue Mix



Sales Performance

(INR Mn)

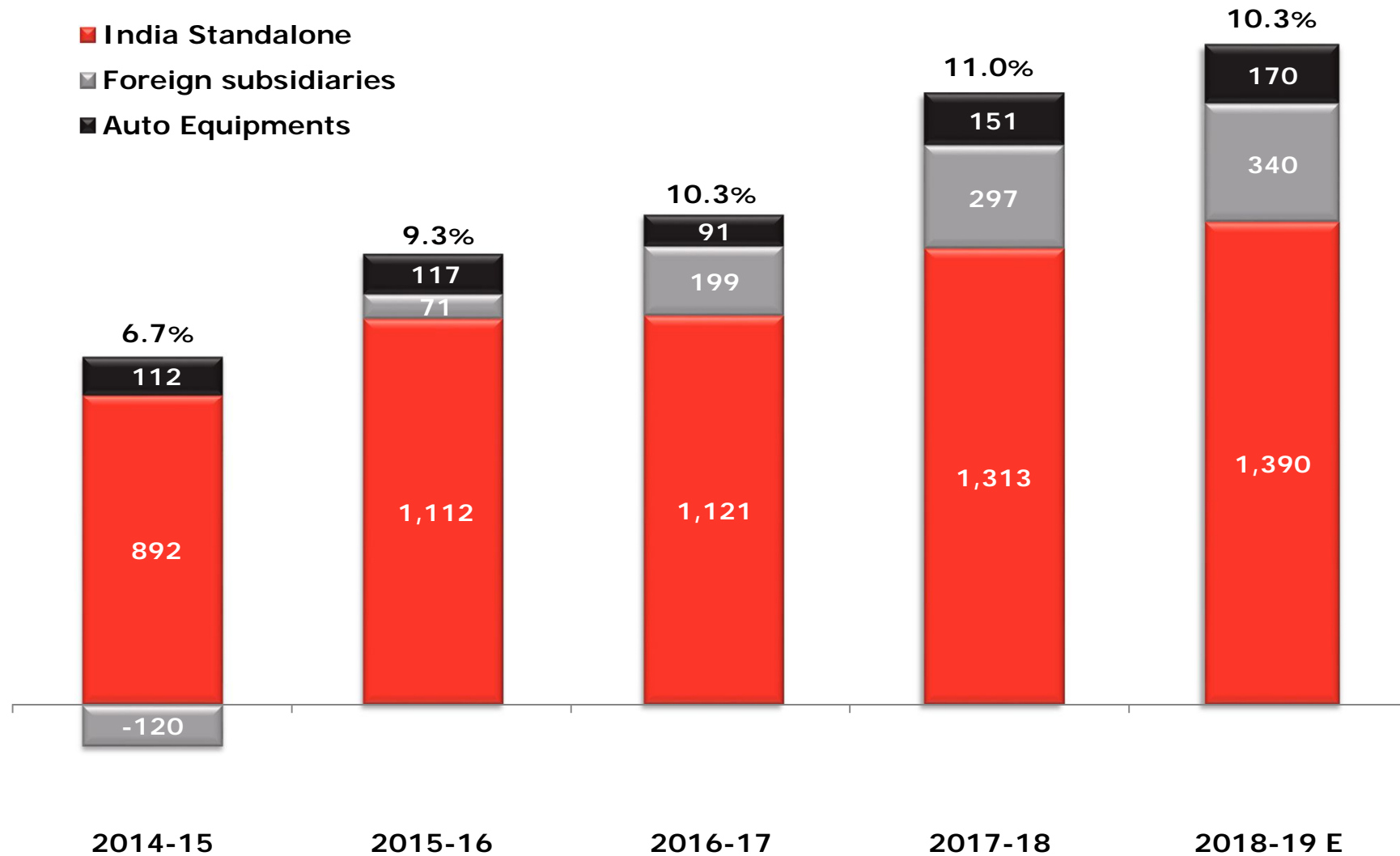
- Compressors - India
- Compressors - ROW
- Auto Equipments



EBITDA

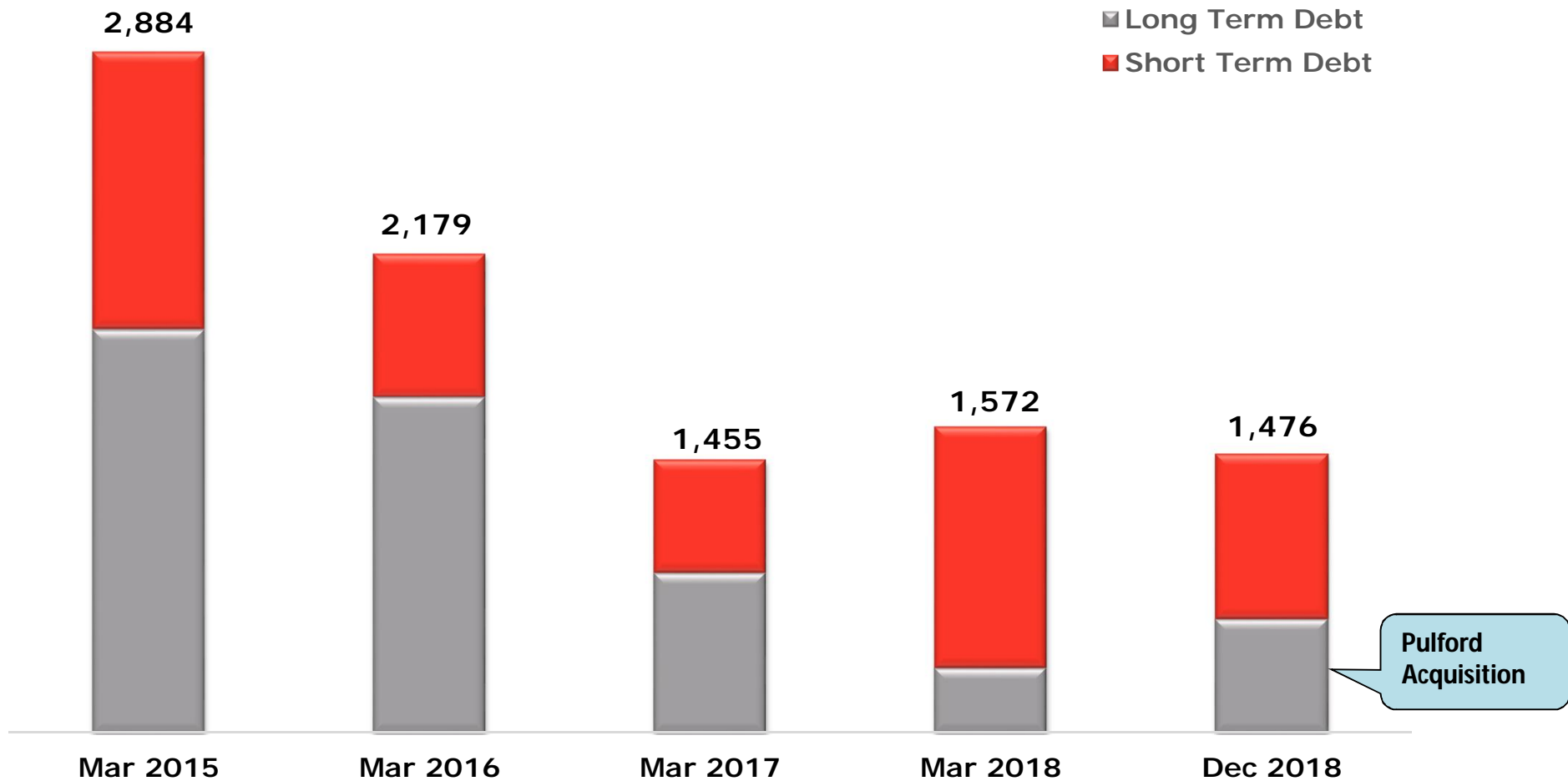
(INR Mn)

- India Standalone
- Foreign subsidiaries
- Auto Equipments



Net Debt Position

(INR Mn)



Thank You