

July 29, 2021

DCS-CRD
BSE Limited
Phiroze Jeejeebhoy Towers
Dalal Street
Mumbai - 400 001

DCS-CRD
National Stock Exchange of India Ltd.
Exchange Plaza
Bandra-Kurla Complex
Bandra (E), Mumbai - 400 051

Scrip Code: 519183

Symbol: ADFFOODS

Sub: Investor Presentation

Enclose please find Corporate Presentation of the Company for the First Quarter ended June 30, 2021.

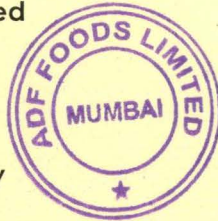
The aforementioned Presentation has been uploaded on the Company's website viz., www.adf-foods.com

You are requested to take the above on your records.

Yours faithfully,

For **ADF Foods Limited**


Shalaka Ovalékar
Company Secretary



Encl: As above





Investor Presentation

Q1FY22





Agenda

- 01 Q1FY22 Financial & Operational Highlights
- 02 About The Company
- 03 Our Growth Strategy
- 04 Historical Financial Overview

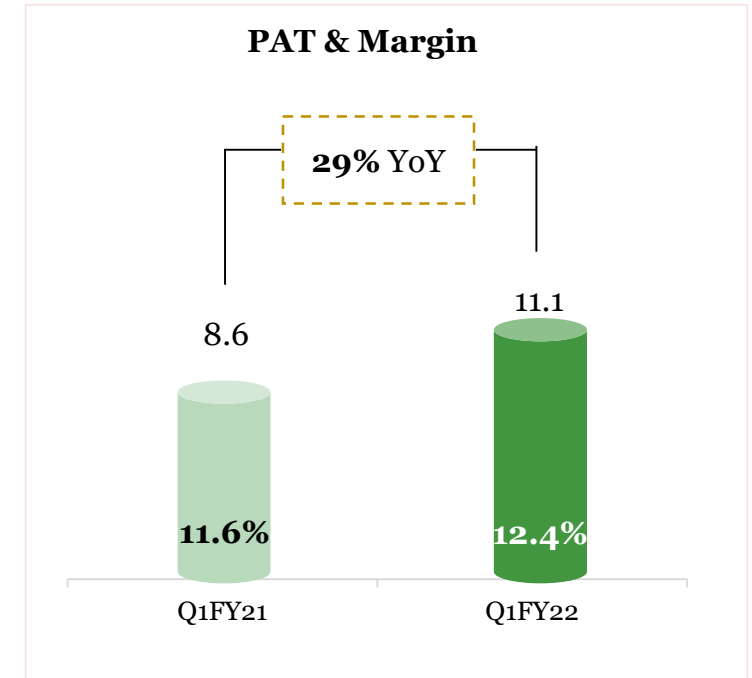
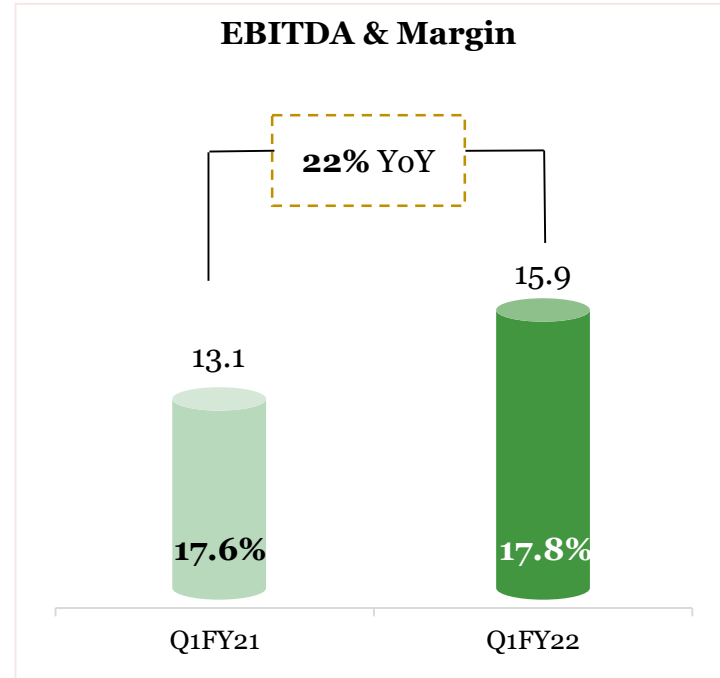
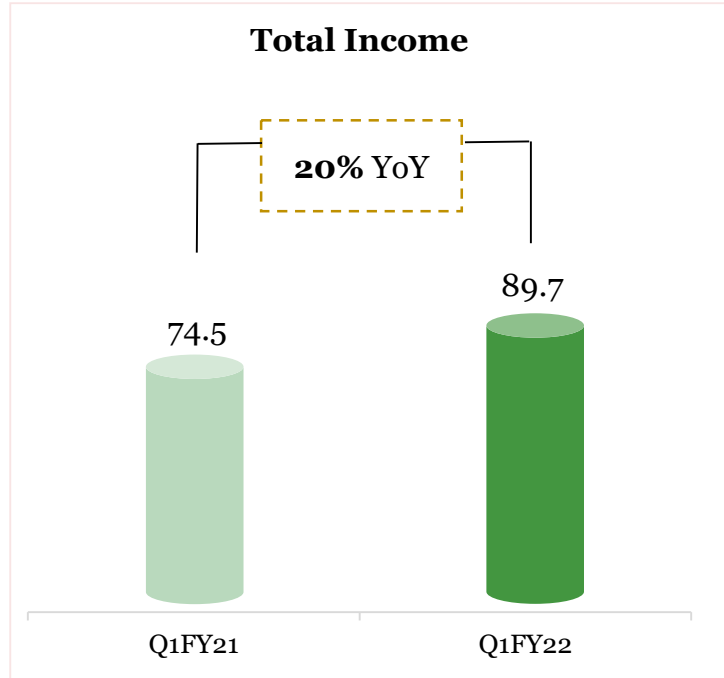


Q1FY22 Financial & Operational Highlights



Q1FY22 consolidated result highlights

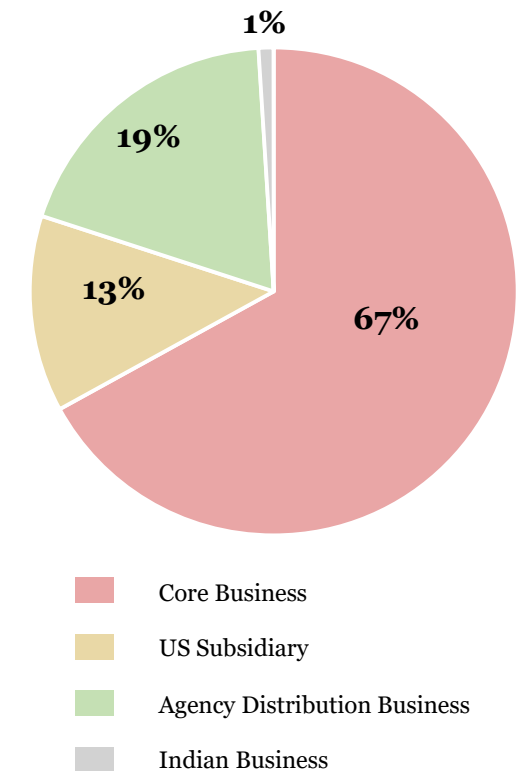
Financials in Rs. Cr



Consolidated profit & loss statement

(Rs Cr)	Q1FY22	Q1FY21	YoY
Revenue from operations	86.2	73.9	17%
Other income	3.5	0.6	
Total Income	89.7	74.5	20%
Cost of material consumed	36.6	22.2	
Purchase of stock-in-trade	43.9	22.8	
Changes in inventories	-31.8	0.0	
Employee expenses	4.8	3.9	
Other expenses	20.2	12.5	
Total Operating expenses	73.8	61.4	
EBITDA	15.9	13.1	22%
EBITDA margin	17.8%	17.6%	
Finance cost	0.1	0.3	
Depreciation	1.4	1.4	
PBT	14.3	11.3	27%
PBT margin	16.0%	15.2%	
Exceptional items	0.0	0.0	
Tax Expenses	3.2	2.7	
PAT	11.1	8.6	29%
PAT margin	12.4%	11.6%	

Contribution to Revenue – Q1FY22

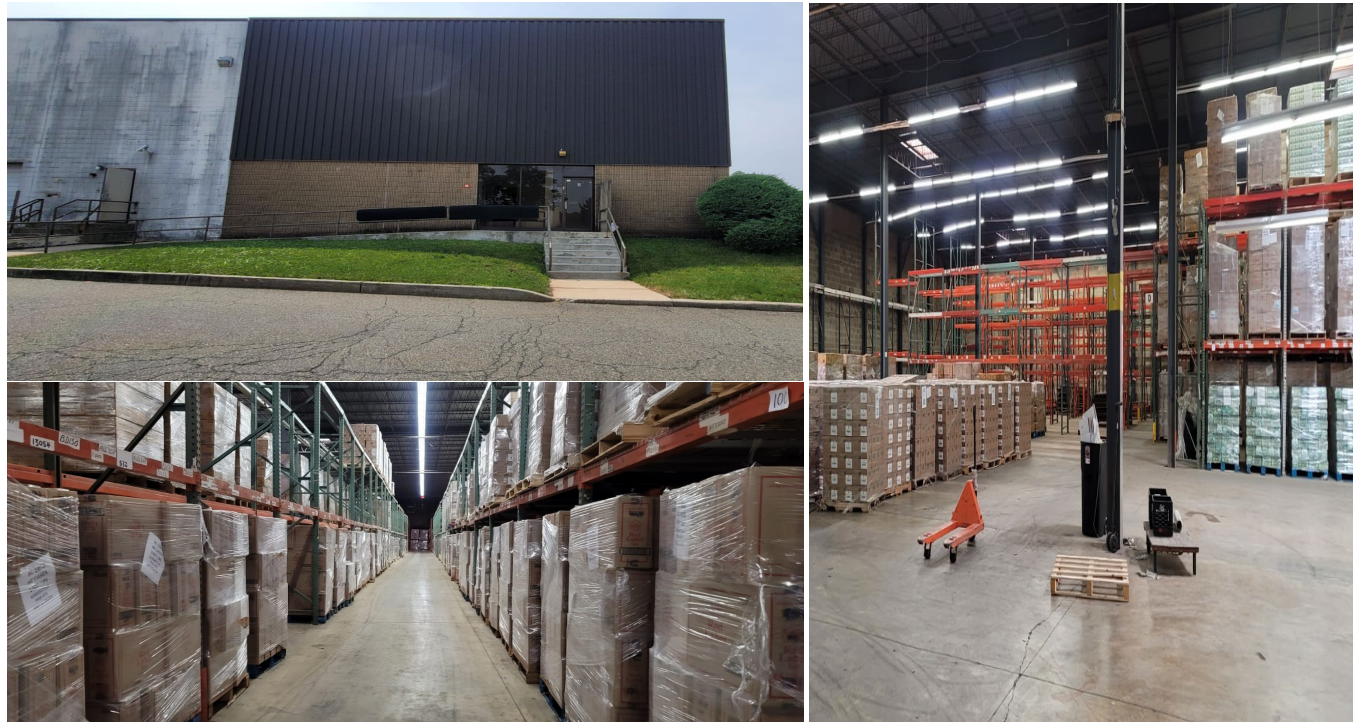


Operational highlights of the quarter

Strengthened sales and marketing team

- Appointed Mr. John Campbell as an Additional Country Manager (Retail Brands) to handle US market
- Appointed Mr. Simon Roberts as Sales Agent for UK mainstream market

Commenced operations from recently leased warehouse of 66,000 Sqft in New Jersey, USA



National promotion event of Ashoka Brand across 30 stores in the UAE



About the Company

“ At ADF we believe in maintaining high quality standards, introducing new and innovative products while remaining customer centric ”



Company highlights

Operational strengths

7
Brands

55+
Countries

180+
Distributors

3
State-of-the-art Facilities

400+
SKU

~28,000
MTPA Capacity

Financial strengths

Zero
Total Debt

20%
EBITDA Margin

13%
PAT Margin

21%
Return on Equity

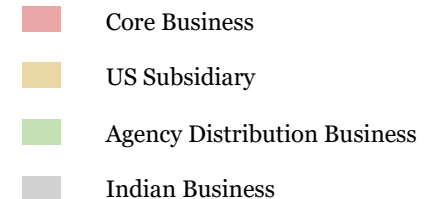
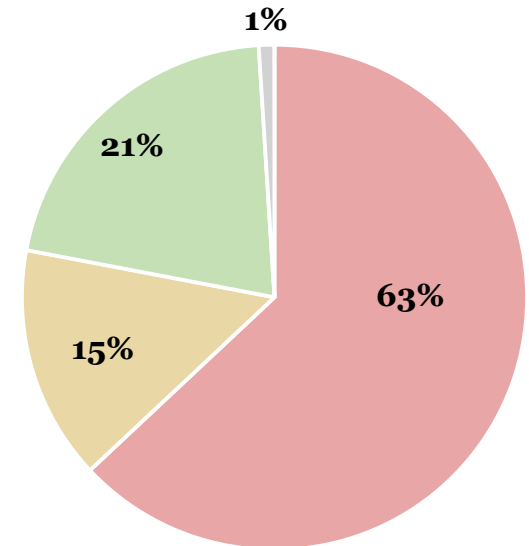
27%
Return on Capital Employed

Rs 81 cr
Net Cash & Equivalents

Our businesses – presence across all categories

Core business	Export of wide range of Indian ethnic products - ready-to-cook, ready-to-eat, frozen, pickles, condiments, etc. - to over 55 countries with significant presence across US, UK and GCC markets
US subsidiary	Dealing in organic & natural foods in the US in a wide range of authentic organic Mexican Food and Meat substitute products
Agency distribution business	Distribution of consumer products for a Fortune 500 FMCG , in the US and UK markets; the products are synergistic to own products and enables to offer a wide range to distributors
India business	Healthy & tasty products under the brand 'SOUL' for the urban India ; pioneer in some product categories such as olive oil based pickles

Contribution to Revenue FY21



Positioning	<ul style="list-style-type: none"> • Flagship brand primarily targeted at Indian diaspora worldwide
Products	<ul style="list-style-type: none"> • Frozen snacks, frozen breads, frozen vegetables, RTE, meal accompaniments, pastes, sauces, spices, milk drinks • 400+ products across categories
Geographies	<ul style="list-style-type: none"> • USA, Canada, UK and APAC
Retail channel	<ul style="list-style-type: none"> • 70-90% from ethnic stores* across geographies • Balance from mainstream/ modern trade stores



*Ethnic stores are a subcategory of general trade stores



Positioning	<ul style="list-style-type: none"> Primarily targeted at Non-Indian consumers 	<ul style="list-style-type: none"> Premium brand targeted at Arabic diaspora 	<ul style="list-style-type: none"> Economy brand
Products	<ul style="list-style-type: none"> RTE, meal accompaniments, pastes, sauces 	<ul style="list-style-type: none"> Meal accompaniments, pastes, sauces 	<ul style="list-style-type: none"> Meal accompaniments, pastes, sauces
Geographies	<ul style="list-style-type: none"> Germany and USA 	<ul style="list-style-type: none"> Middle East 	<ul style="list-style-type: none"> Middle East
Retail channel	<ul style="list-style-type: none"> 100% from mainstream/ modern trade stores 	<ul style="list-style-type: none"> 95% from mainstream/ modern trade stores 	<ul style="list-style-type: none"> 65% from mainstream/ modern trade stores ; 35% general trade





Positioning	<ul style="list-style-type: none"> • Organic, made with USDA certified organic ingredients 	<ul style="list-style-type: none"> • Non-GMO, all natural, vegan, vegetarian
Products	<ul style="list-style-type: none"> • Hand rolled burritos 	<ul style="list-style-type: none"> • Meatless meatballs
Geographies	<ul style="list-style-type: none"> • USA 	<ul style="list-style-type: none"> • USA
Retail channel	<ul style="list-style-type: none"> • 100% from mainstream/ modern trade stores 	<ul style="list-style-type: none"> • 100% from mainstream/ modern trade stores



- Distribution of some products of a global Fortune 500 FMCG in USA and UK markets
- Products are complimentary to existing range of ADF products and offers wide range of products to the distributors
- Enables the company access to a wider product portfolio to offer the retailers who stock the company's products
- Focusing on adding more complimentary products of similar nature in product basket as well as adding products of few more companies in newer markets





BINDASS KHAO

Positioning

- Primarily targeting urban Indian customers

Products

- Wide range of products - pickles, sauces, cooking paste, ready to cook instant masala mix, etc.

Geographies

- Sold and marketed primarily in Mumbai, India

Retail channel

- Available in Reliance Retail, Sahakari Bhandar & Haiko; Online Presence in Big Basket and Flipkart



State of the art manufacturing units

Nadiad, Gujarat

- Total Built up factory area - 15,000 Sqm
- Frozen Foods (Samosas, Vegetables, Snacks, Parathas, etc)
- Meal Accompaniments (Pickles, Chutneys, Pastes, Sauces)
- Ready to Eat Curries & Canned Vegetables



Nasik, Maharashtra

- Total Built up factory area – 10,100 Sqm
- Totally automated spice processing unit by Buhler, Germany
- Meal Accompaniments (Pickles, Chutneys, Pastes, Sauces)
- Ready to Eat Curries & Spices



Surat, Gujarat

- Leased facility with a capacity of 1,950 MTPA
- Spread over an area of 7 acres in Surat
- Frozen Foods (Breads, Snacks etc)
- Ready to Eat Curries



Accreditations



The facility at Nasik is USDA Organic accredited, ensuring stringent production norms and sound farming practises



Bureau Veritas accreditation which demonstrates that products, processes and services meet the highest levels of safety, quality and regulatory standards

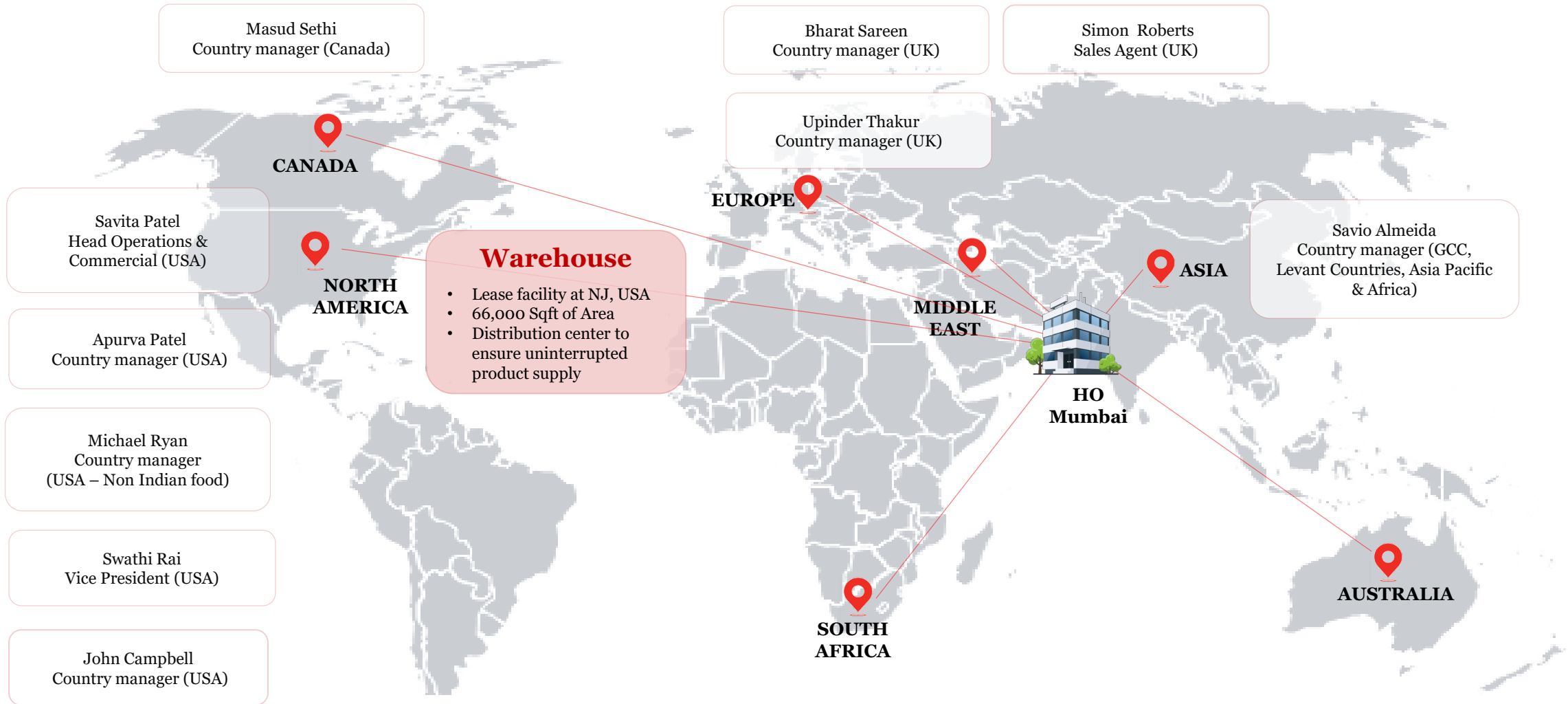


UKAS accreditation which ensures high standards for managing occupational health and safety



BRC accreditation ensuring both food safety & quality standard best practices are being maintained

Strong distribution network



55+
Countries

180+
Distributors

7
Country managers

Branding and advertising engagements in overseas markets



Ashoka was the Associate Sponsor of IPL 2020 for the US and Canada markets on Willow TV



BIG BOSS Sponsorship on Colors TV



Sponsorship of Taarak Mehta Ka Ooltah Chashmah on Sony SAB

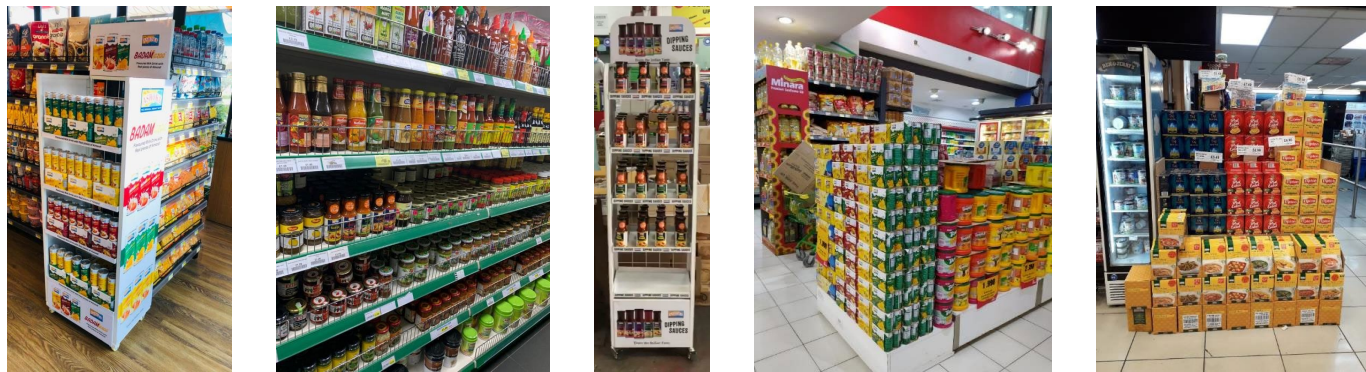


Sponsorship on Aajtak & India Today News Channels

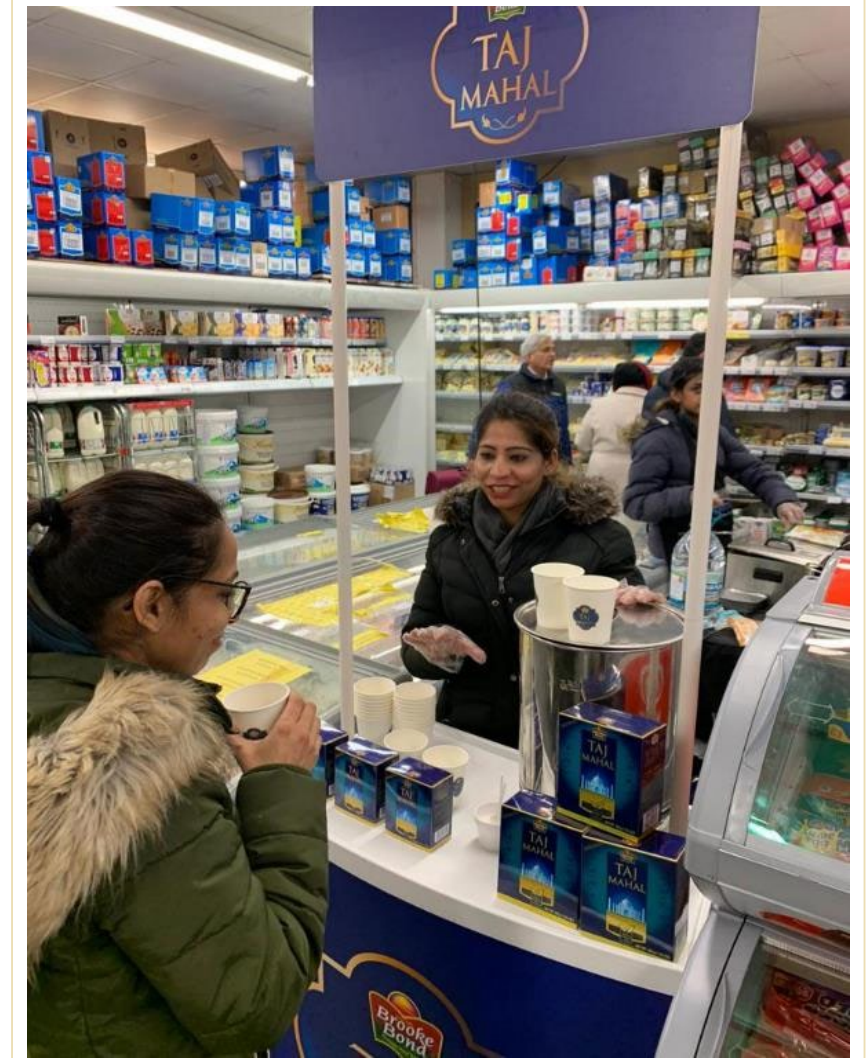
Instore promotions and displays



UK Cross promotion - Buy any pack of tea & get Ashoka RTE pack free



Instore displays



Tea sampling promotion

Bimal Thakkar

Chairman, Managing Director and CEO

- 30+ years of experience in domestic and export management
- Instrumental role in development of Brands and new products, tapping new markets, international acquisitions, setting up of subsidiary companies in U.K. and U.S.A.

Devang Gandhi

COO

- 30+ years of experience in business management
- Hold a bachelor's degree in commerce

Shardul Doshi

CFO

- 25 years of experience in finance, IR and accounting
- Is a CA, CWA and CS and holds a bachelor's degree in commerce

Shalaka Ovalekar

CS & Legal Head

- 15+ years of experience in secretarial and legal functions
- Is a CS, CWA, LLB and holds a bachelor's degree in commerce

Maneck Katpitia

VP, International Operations

- 30+ years of experience in international operations
- Holds bachelor's degree in commerce and postgraduate in marketing and sales management

Balbir Singh

VP, Manufacturing

- 25+ years of experience in food industry
- Holds a master's degree in food technology

Deepak Nachane

GM, Purchase

- 25+ years of experience in procurement, vendor development, inventory control
- Holds engineering degree in production technology & diploma in business & materials management

Deepa Harris

Independent Director

- 30+ years of expertise in high-end luxury hospitality category
- Currently Independent Director of PVR Limited, Jubilant Foodworks Ltd., Prozone Intu Properties Ltd, Taj Safaris, Concept Hospitality Ltd. and TCPL Packaging Limited.

Ravinder Jain

Independent Director

- 45+ years of experience in business management
- Has held various management position like MD of Shaw Wallace, MD of Millennium Alcobev and head of McDowell and Co.
- Has been instrumental in developing several green field businesses in alcohol and beverage industry as well as many well-known brands like McDowell's Whisky, Bagpiper Whisky etc.

Viren Merchant

Non-Executive Director

- 30+ years of experience and expertise in business management and pharmaceutical and healthcare industry
- Currently CEO of Encore Healthcare Pvt Ltd.

Chandir Gidwani

Independent Director

- 45+ years of experience in financial services
- Chairman Emeritus & Founder of Centrum Capital Ltd; also runs a proprietary investing business focused on mid-sized Indian companies. Member of industry associations e.g. FICCI, CII, etc.

Jay Mehta

Non-Executive Director

- 35+ years of rich industrial experience
- Executive Vice Chairman of Gujarat Sidhee Cement Ltd and Saurashtra Cement Ltd and is on the Board of various other private and public limited companies

Our Growth Strategy



Our strategy



Achievements so far

1 Increased Capacities

1. Started commercial production at the leased unit (capacity of 1,950 MTPA) in Surat, Gujarat, to drive near-time growth
2. Allotted ~7 acres land in Gujarat for Rs ~60 cr greenfield expansion to enhance capacity by ~10,000 MTPA in Phase I

2 Broadened Distribution Network

1. Acquired a warehouse on lease in the US as a distribution center for uninterrupted supply, having an area of 66,000 sq ft
2. Made major inroads with supermarket chains with additional listings in Canada and US and seeing good product takeoff

3 Strengthened 'Agency Distribution' Business

1. Continued addition of new products in distribution business, thereby enhancing product basket
2. Present in US and UK markets and looking at tapping into more geographies

Historical Financial Overview



Consolidated profit & loss statement

(Rs Cr)	FY21	FY20	FY19
Revenue from operations	369.3	285.2	231.4
Other income	6.0	9.4	14.1
Total Income	375.3	294.6	245.5
Cost of material consumed	107.3	81.8	89.3
Purchase of stock-in-trade	124.9	86.4	42.0
Changes in inventories	-17.1	-19.2	-11.1
Employee expenses	17.6	17.6	16.1
Other expenses	68.8	65.4	56.3
Total Operating expenses	301.6	232.1	192.6
EBITDA	73.8	62.5	52.9
EBITDA margin	19.7%	21.2%	21.5%
Finance cost	1.2	1.3	0.9
Depreciation	5.9	5.9	14.2
PBT	66.7	55.3	37.7
PBT margin	17.8%	18.8%	15.4%
Exceptional items	0.0	-0.3	0.0
Tax Expenses	16.6	12.2	12.4
PAT	50.1	42.8	25.3
PAT margin	13.3%	14.5%	10.3%

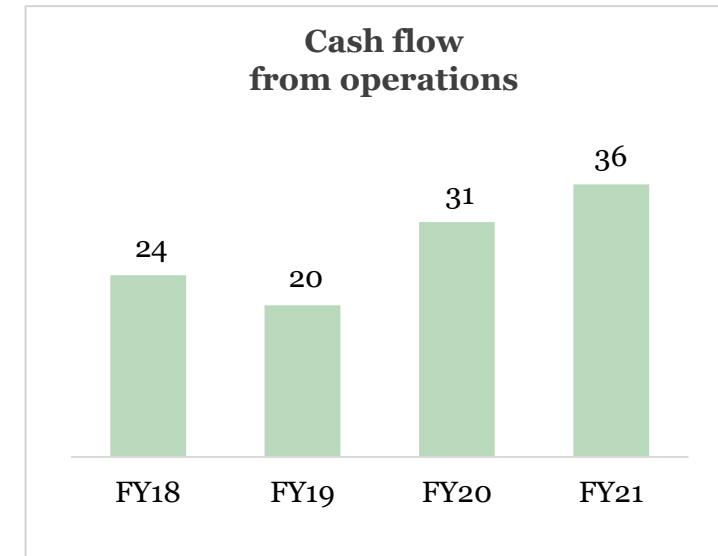
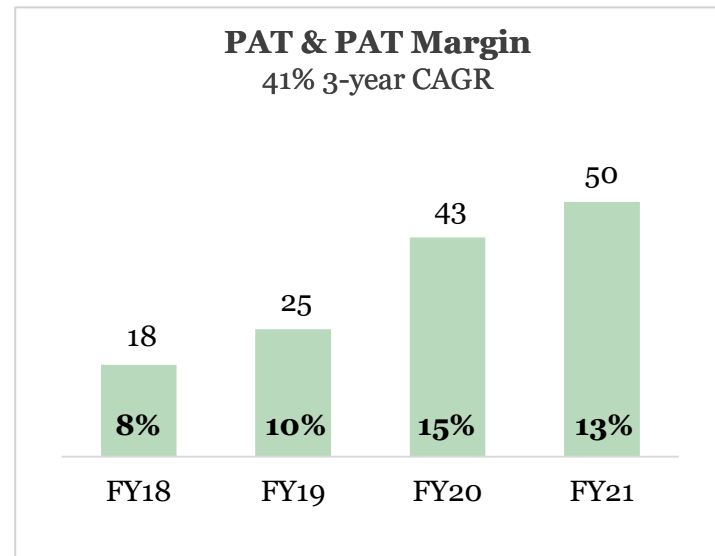
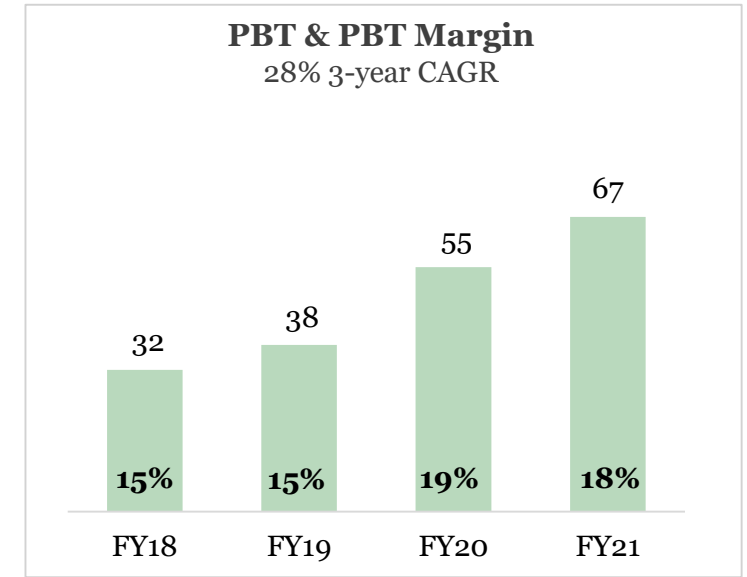
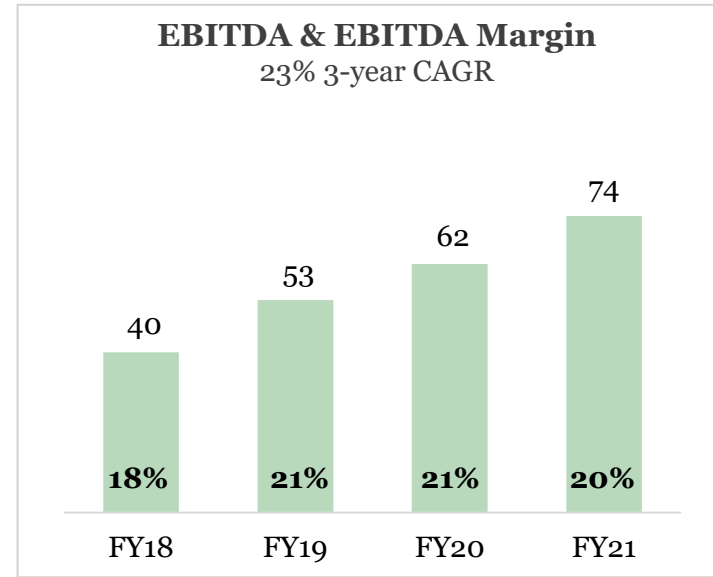
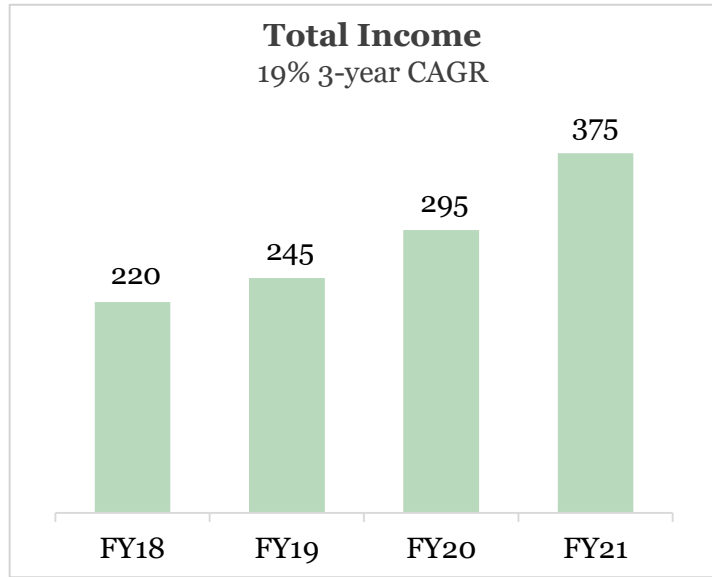
Consolidated balance sheet

(Rs Cr)	Mar'21	Mar'20
Share Capital	20.4	20.4
Reserves	253.1	184.0
Shareholders' Funds	273.5	204.4
Other liabilities	0.9	1.4
Deferred tax liability	7.6	7.1
Total Non-Current Liabilities	8.4	8.5
Trade Payables	34.8	21.3
Other Current Liabilities	7.8	11.7
Current Tax Liabilities	0.3	0.3
Other Financial Liabilities	2.1	2.6
Short Term Borrowings	0.0	23.2
Total Current Liabilities	45.1	58.9
Total Liabilities	327.0	271.8

(Rs Cr)	Mar'21	Mar'20
Fixed Assets incl. CWIP	56.2	58.2
Intangible Assets	21.3	21.4
Income Tax Asset (Net)	5.0	4.6
Other Non Current Assets	5.7	10.3
Total Non-Current Assets	88.3	94.4
Inventories	72.9	54.6
Sundry Debtors	64.9	53.1
Cash and Bank	64.7	36.7
Investments	16.6	18.0
Other Financial Assets	10.8	7.2
Other Current Assets	8.7	7.6
Total Current Assets	238.7	177.4
Total Assets	327.0	271.8

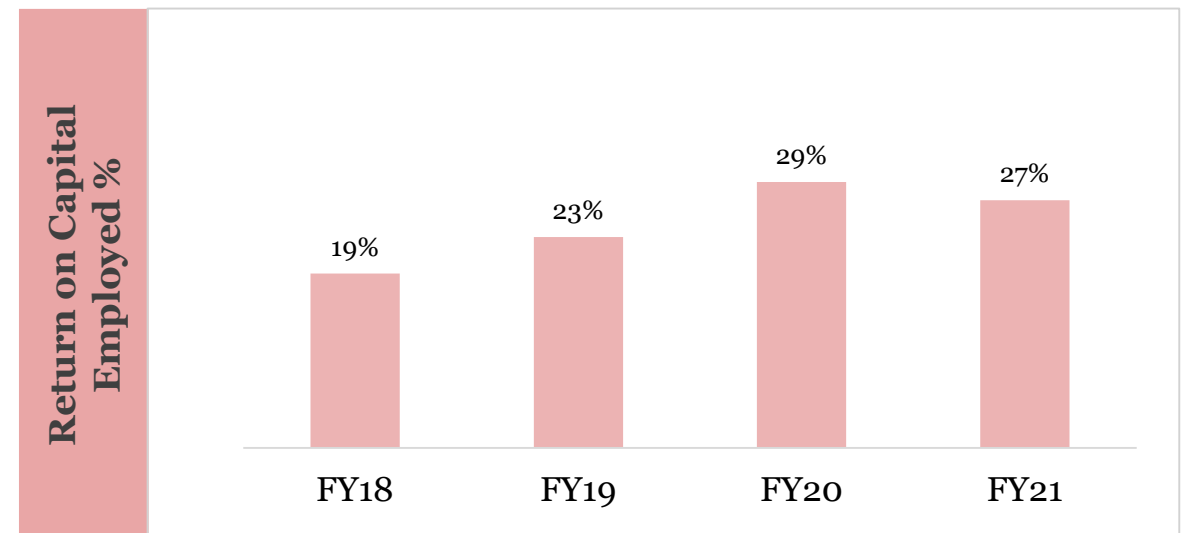
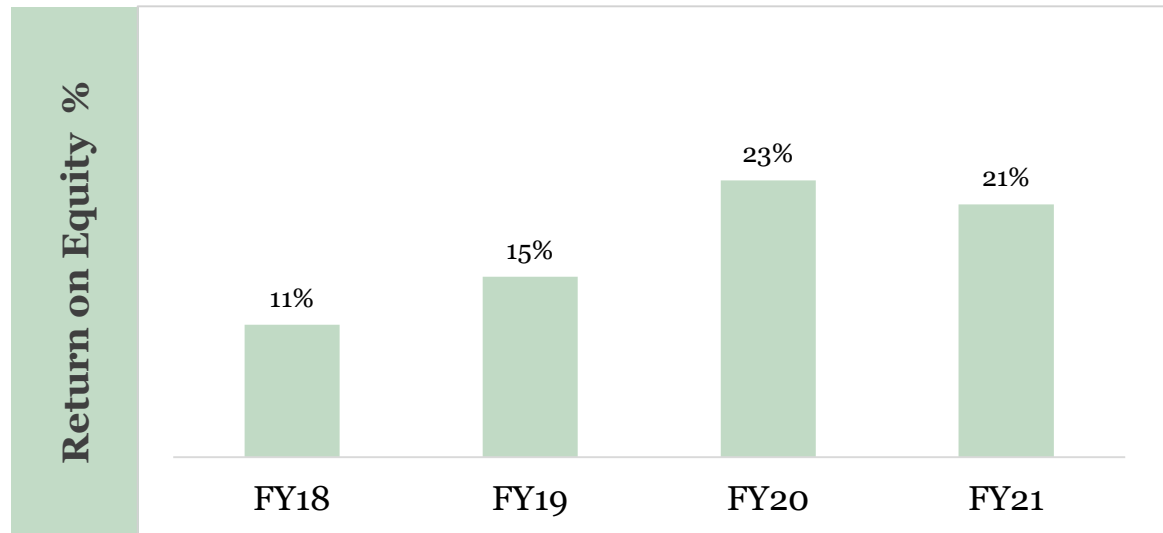
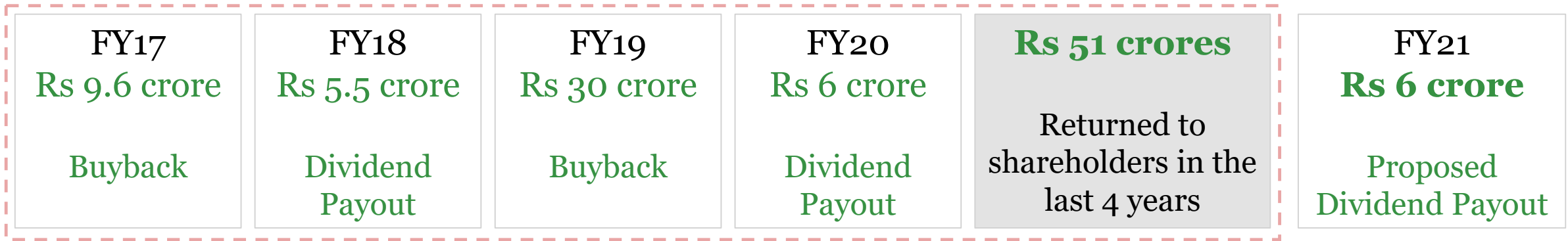
Consolidated financial performance

Financials in Rs. Cr



Generating value for shareholders

Our continued focus lies on improving cash generation and maintaining a robust balance sheet, thereby enabling us to generate strong returns and reward shareholders



Disclaimer

This presentation and the accompanying slides (the “Presentation”), which have been prepared by ADF Foods Limited (the “Company”), have been prepared solely for information purposes and do not constitute any offer, recommendation or invitation to purchase or subscribe for any securities, and shall not form the basis or be relied on in connection with any contract or binding commitment whatsoever. No offering of securities of the Company will be made except by means of a statutory offering document containing detailed information about the Company.

This Presentation has been prepared by the Company based on information and data which the Company considers reliable, but the Company makes no representation or warranty, express or implied, whatsoever, and no reliance shall be placed on, the truth, accuracy, completeness, fairness and reasonableness of the contents of this Presentation. This Presentation may not be all inclusive and may not contain all of the information that you may consider material. Any liability in respect of the contents of, or any omission from, this Presentation is expressly excluded.

Certain matters discussed in this Presentation may contain statements regarding the Company’s market opportunity and business prospects that are individually and collectively forward-looking statements. Such forward-looking statements are not guaranteeing of future performance and are subject to known and unknown risks, uncertainties and assumptions that are difficult to predict. These risks and uncertainties include, but are not limited to, the performance of the Indian economy and of the economies of various international markets, the performance of the industry in India and world-wide, competition, the company’s ability to successfully implement its strategy, the Company’s future levels of growth and expansion, technological implementation, changes and advancements, changes in revenue, income or cash flows, the Company’s market preferences and its exposure to market risks, as well as other risks. The Company’s actual results, levels of activity, performance or achievements could differ materially and adversely from results expressed in or implied by this Presentation. The Company assumes no obligation to update any forward-looking information contained in this Presentation. Any forward-looking statements and projections made by third parties included in this Presentation are not adopted by the Company and the Company is not responsible for such third-party statements and projections.

Thank You



Shardul Doshi (CFO)/ Shalaka Ovalekar (CS)

ADF Foods Limited

shardul@adf-foods.com

co_secretary@adf-foods.com

Marathon Innova B2 - G01, G. K. Road

Lower Parel, Mumbai 400 013



Pooja Dokania/ Rishav Das

Pareto Capital (Investor Relations)

pooja.dokania@paretocapital.in

rishav.das@paretocapital.in

210, B Wing, Kanakia Wall Street

Andheri East, Mumbai - 400069