



GE T&D India Limited

L31102DL1957PLC193993

T-5 & T-6, Plot I-14, Axis House,
Jaypee Wishtown, sector-128,
Noida-201304, Uttar Pradesh

T +91 120 5021500

F +91 120 5021501

<https://www.ge.com/in/ge-td-india-limited>

August 12, 2022

The Secretary
BSE Limited
Phiroze Jeejeebhoy Towers
Dalal Street
MUMBAI 400 001

The Manager
Listing Department
National Stock Exchange of India Ltd
Exchange Plaza, Bandra Kurla
Complex, Bandra (East)
MUMBAI 400 051

Code No. 522275

Symbol: GET&D

Dear Sir/ Madam,

Sub: **Analyst Presentation**

Further to our letter dated August 5, 2022, enclosed please find a copy of the analyst presentation in respect of earnings conference call with analysts/ institutional investors.

You are requested to take note of the same.

Thanking you,

Yours faithfully,

For GE T&D India Limited

Manoj Prasad Singh
Company Secretary



GE T&D India Limited

ACCELERATING INDIA'S ENERGY TRANSITION

Analyst Presentation
Q1 Financial Year 2022-23



DISCLAIMER

This presentation has been prepared solely for the use at analyst/ investor presentation. By attending the meeting where this presentation is made, or by reading the presentation slides, you agree to be bound by the following limitations-

- The forward-looking information and statements can generally be identified by the fact that they do not relate only to historical or current facts. Forward-looking statements sometimes use terminology such as “targets”, “believes”, “expects”, “aims”, “assumes”, “intends”, “plans”, “seeks”, “will”, “may”, “anticipates”, “would”, “could”, “continues”, “estimate”, “milestone” or other words of similar meaning and similar expressions or the negatives thereof. GE T&D India Limited cannot give assurance to the correctness of such information and statements.
- By their nature, forward-looking information and statements involve known and unknown risks, uncertainties and other important factors that could cause the actual results, performance or achievements of the Company to differ materially from any future results, performance or achievements that may be expressed or implied by the forward-looking information and statements in this presentation. Should one or more of these risks or uncertainties materialize, or should any underlying assumptions prove to be incorrect, the Company's actual financial condition or results of operations could differ materially from that or those described herein as anticipated, believed, estimated or expected
- Given the aforementioned uncertainties, prospective or present investors are cautioned not to place undue reliance on any of these forward-looking statements
- No part of this presentation, nor the fact of its distribution, should form the basis of, or be relied on in connection with, any contract or commitment or investments decision whatsoever. Investor/prospective advisors must be sought on specific situation from well-informed legal, investment, tax, financial, and management professionals
- This presentation and its contents are confidential and must not be distributed, published or reproduced. This presentation does not constitute a recommendation regarding the securities of the Company.



Executive Summary



- **Q1 FY 22-23 Orders booking at 6.0 BINR vs 4.7 BINR in Q1 FY 21-22, up by 27% yoy.**
- **Q1 FY 22-23 Sales at 5.9 BINR vs 6.4 BINR in Q1 FY 21-22, down 7% yoy.**
- **Q1 FY 22-23 Profit After Tax at 64 MINR vs loss After Tax of 193 MINR in Q1 FY 21-22.**
- **Order back log of ₹ 36.6 Billion**
- **Net debt increased by 1.1 BINR in Q1 FY 22-23**



Creating the Grid of Future | Key Commissioning



220/110kV 06 GIS Bays for KSEB at Vizhinjam



220/110kV GIS substation for KSEB at Ettumanoor



2 X 50 MVA, 132/33kV along with 9 X 33kV Bays at JUSNL at Naudiha



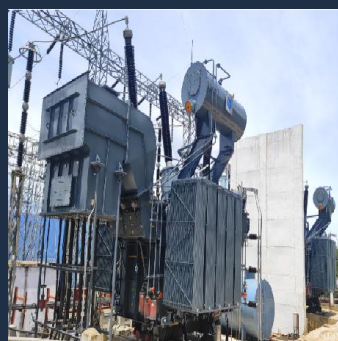
1 X 132kV GIS bay extension for OPTCL Unit VIII at Bhubaneswar



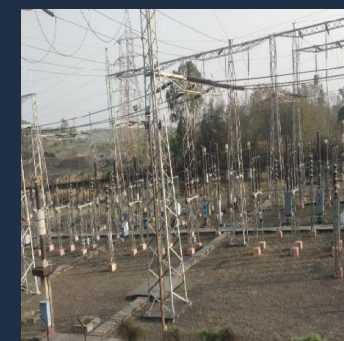
400kV Bus Reactor for PGCIL at Thiruvallam



5 bays 220kV GIS Substation along with line 220 kV 1&2 with associated 220kV AIS Outdoor equipment's, Bus 1&2 & Buscoupler for HPCL at Vizag



1 X 40 MVA, 220/ 33kV Transformer along with 33kV GIS for BPC at Dagapela, Bhutan

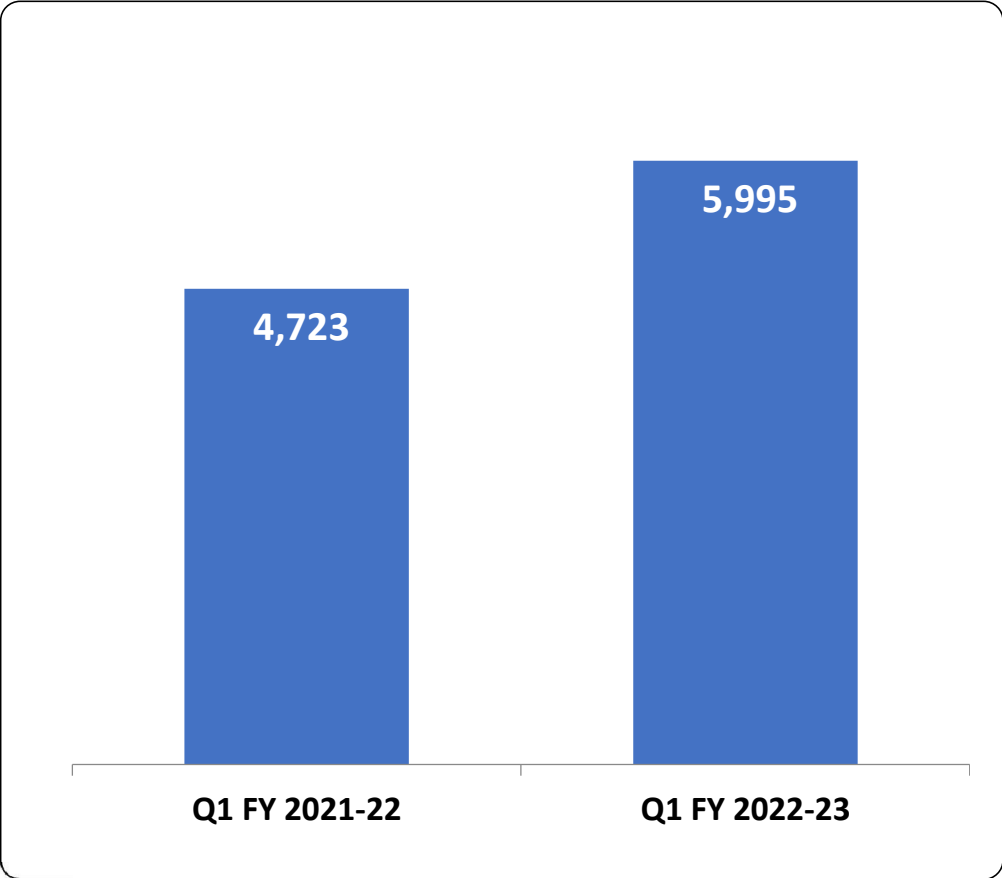


220kV 2 AIS Bays for MSETCL at Eklahare, Nasik

Order Intake

Q1 FY 2022-23

(₹ in millions)



Key Orders booked during Q1, FY 22-23

- 400KV, 315 MVA Power Transformer for Aditya Aluminium for their plant at Lapanga in Odhisa.
- 400kV GIS bay with reactor for NHPC at Parabati phase II
- 245/145 kV GIS in utility infrastructure space for Kalpatru at Durgapur
- 245/72.5 kV GIS supply and erection contract from KEC in KPTCL substation at Bengaluru
- 245 kV GIS Package at NHPC Teesta Hydroelectric Plant via BHEL
- 400 kV 125 MVAR reactor bay at Birsinghpur from M.P. Power Generation Company Limited
- Service contract for 400 kV upgradation work at Kahalgaon for NTPC



Financial Data

Q1 FY 2022-23

(₹ in millions)

| | Q1 2022-23 | Q1 2021-22 | Change | FY 2021-22 |
|--|---------------|---------------|----------------|----------------|
| Sales | 5,930 | 6,381 | -7.1% | 30,660 |
| EBITDA | 224 | 14 | | (1,089) |
| <i>% of Sales</i> | <i>3.8%</i> | <i>0.2%</i> | <i>3.6 pts</i> | <i>-3.6%</i> |
| Profit Before Tax & Exceptional Items | 103 | (253) | | (1,797) |
| <i>% of Sales</i> | <i>1.7%</i> | <i>-4.0%</i> | <i>5.7 pts</i> | <i>-5.9%</i> |
| Profit Before Tax & after exceptional Items | 103 | (253) | | (695) |
| <i>% of Sales</i> | <i>1.7%</i> | <i>-4.0%</i> | <i>5.7 pts</i> | <i>-2.3%</i> |
| Profit After Tax | 64 | (193) | | (496) |
| <i>% of Sales</i> | <i>1.1%</i> | <i>-3.0%</i> | <i>4.1 pts</i> | <i>-1.6%</i> |

Net Debt* of ₹1.9 Billion as on 30th Jun, 22 vs ₹ 0.8 Billion as on 31st Mar, 22



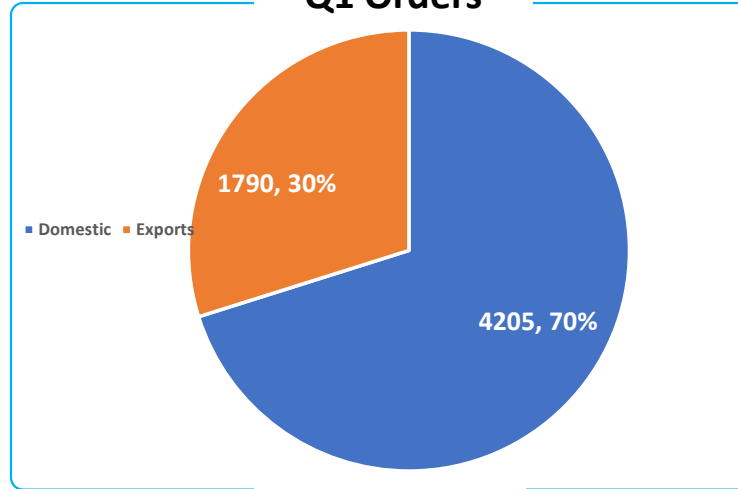
* Net of Cash & Bank Balance of 530 MINR vs 824 MINR on March 31, 2022

© GE T&D India Limited

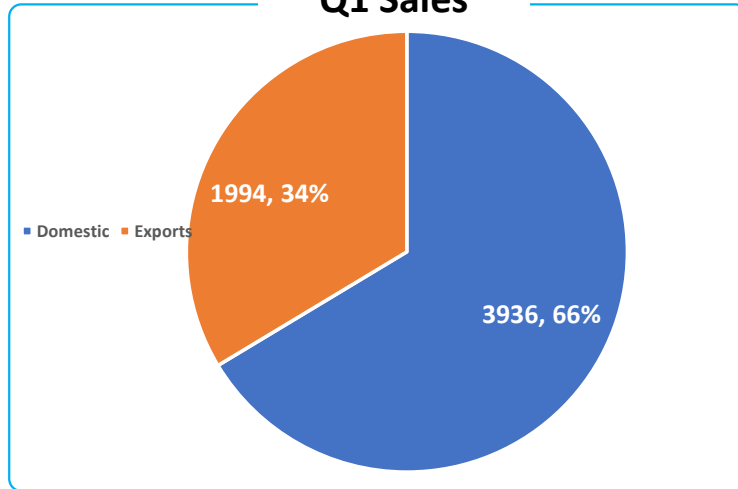
Orders, Sales and Backlog Details

(₹ in millions)

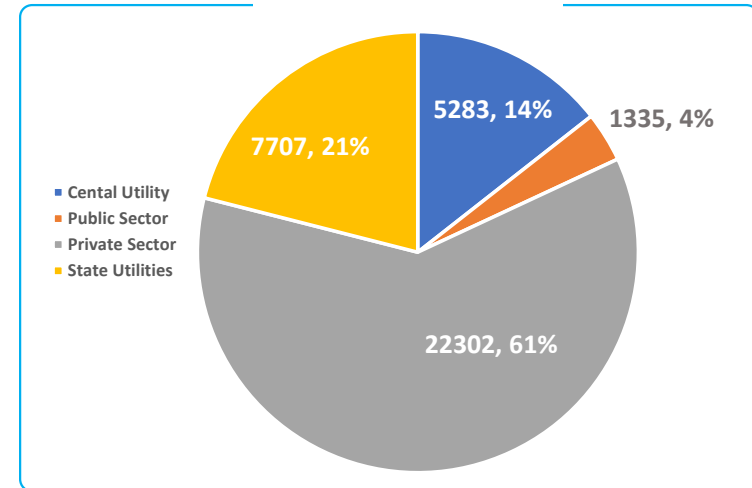
Q1 Orders



Q1 Sales



Order in hand



THANK YOU

Contact us:

Suneel Mishra
Investor Relations Officer
suneel.mishra@ge.com

Anshul Madaan
Head – Communications & PR
anshul.madaan@ge.com

<http://www.ge.com/in/ge-td-india-limited>

