



ALPHA GEO (INDIA) LIMITED

Plot No.1, Sagar Society, Road No.2, Banjara Hills, Hyderabad - 500034
Tel : +91-40-23550502 / 23550503 / 23540504, Fax : +91-40-23550238
E-mail : info@alphageoindia.com, Website : www.alphageoindia.com

Ref: AGIL/CS/NSE&BSE/18/2019-20
Dated: 19.06.2019

To
The Manager
Listing Department
National Stock Exchange of India Limited
Exchange Plaza, Plot No. C-1, G Block,
Bandra Kurla Complex, Bandra (E)
Mumbai- 400 051

Scrip ID: ALPHAGEO

To
The General Manager
Department of Corporate Services
BSE Limited
1st Floor, New Trading Ring, Rotunda Building
Phiroze Jeejeebhoy Towers, Dalal Street, Fort,
Mumbai- 400 001

Scrip Code: 526397

Dear Sir,

Sub: Investors Presentation

Ref: Regulation 30 and 46 of SEBI (Listing Obligations and Disclosure Requirements) Regulations, 2015

Pursuant to Regulation 30 of SEBI (Listing Obligations and Disclosure Requirements) Regulations 2015, please find enclosed an *Investors' Presentation June 2019* of the Company.

In accordance with Regulation 46 of SEBI (LODR) Regulations, 2015, the aforesaid presentation is also being hosted on website of the Company www.alphageoindia.com.

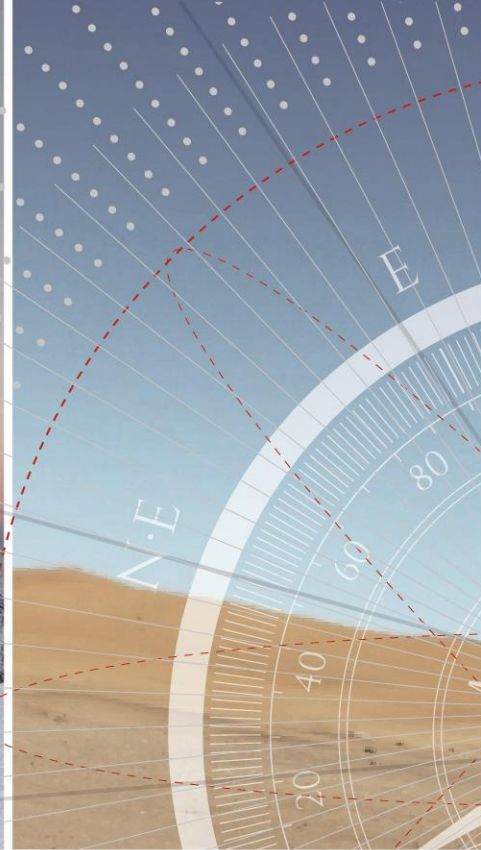
Thanking You

For Alpha Geo (India) Limited

Deepa Dutta

Company Secretary and Compliance Officer





ALPHAGEO (INDIA) LTD.
INVESTOR PRESENTATION | JUNE 2019

Company Snapshot



53

Projects completed till date



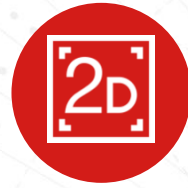
3

Countries in which they are present

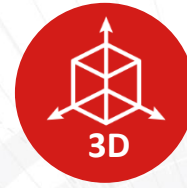


16

Years of experience in sedimentary basins



47,549 GLK
Of experience in 2D data



3D

7,022 Sq. Km
Of experience in 3D data



233

Team members as on 31st March, 2019



28

Years of Experience in Seismic Data Acquisition



66%

3 Years Revenue CAGR
FY19 – INR 4,102 Mn



60%

3 Years PAT CAGR
FY19 – INR 454 Mn



24.89%

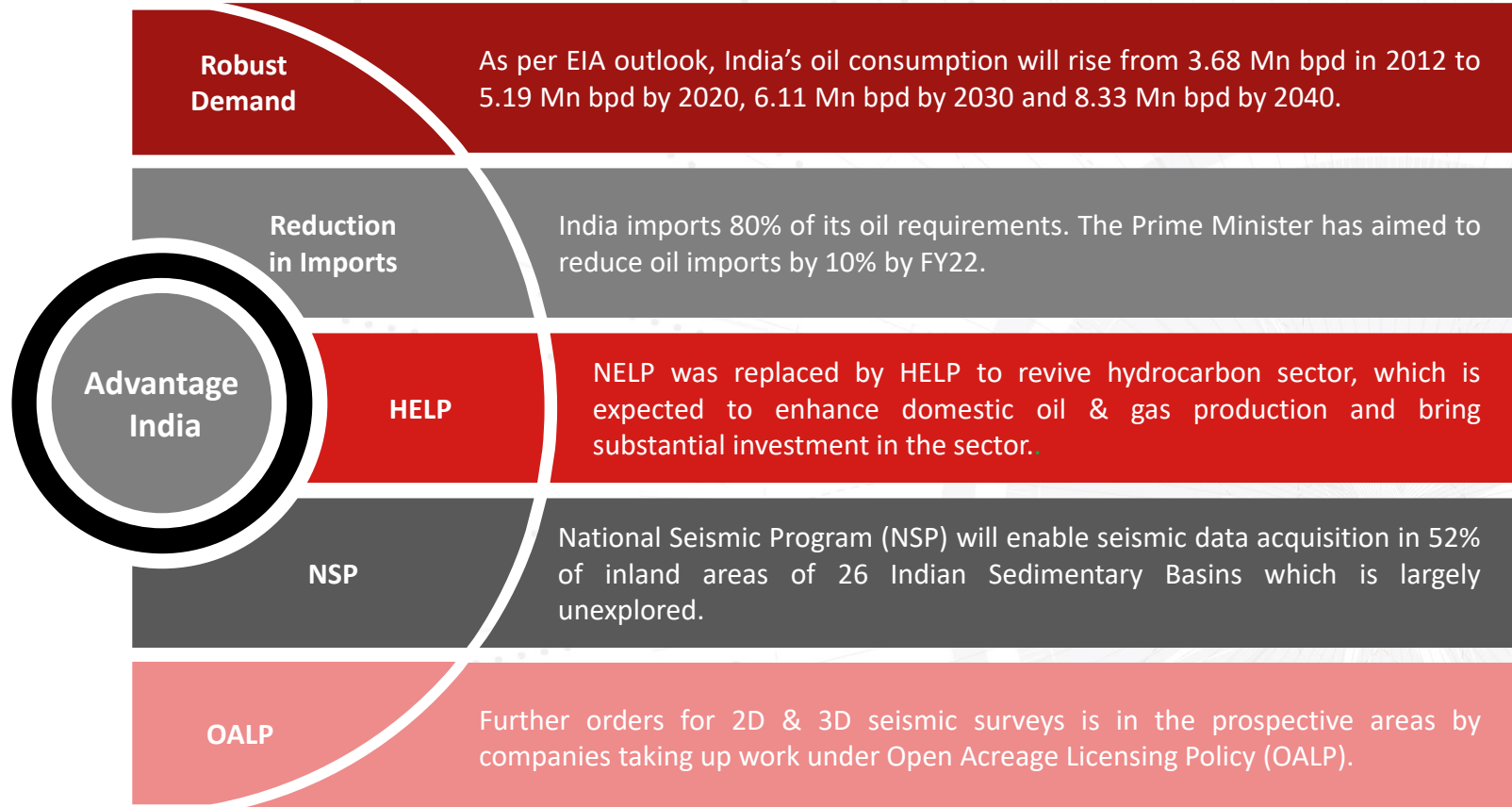
FY19 ROCE



INR 2,765 Mn
Capital Employed (FY19)



INR 3,063 Mn
Of Market Capitalization as on 31st March, 2019



Executive Summary

COMPANY OVERVIEW



- Incorporated in 1987, Alphageo (India) Ltd. (Alphageo), is India's oldest and largest private sector provider of seismic data acquisition services.
- The Company provides a wide range of geophysical services to renowned national and international oil and gas exploration companies and research organizations to identify subterranean deposits of hydrocarbons and other minerals with accuracy.

FINANCIAL HIGHLIGHTS (FY19)

TOTAL REVENUE
INR 4,102 Mn

BUSINESS SEGMENTS

Seismic data acquisition in 2D/3D/3C

Seismic data processing of 2D/3D data

Seismic data interpretation

Airborne Surveys

Geophysical mapping services

Other Services

EBITDA
INR 1,074 Mn

KEY CLIENTS



ऑयल इंडिया लिमिटेड
Oil India Limited



PAT
INR 454 Mn

The image is a composite graphic. The background is a landscape with a flat, golden-brown field in the foreground and a range of rugged, brown mountains in the distance under a clear sky. Overlaid on the right side is a large, semi-transparent compass rose. The compass rose has a white outer ring with degree markings from 0 to 360 in increments of 20. The cardinal directions are labeled: 'N' at the bottom, 'E' at the top, 'S·E' at the top-right, and 'S·W' at the bottom-right. The compass rose also features a star-like design in the center and several concentric circles. A network of thin white lines and small white dots is scattered across the landscape, suggesting a data or navigation theme.

Company Overview

Company Overview

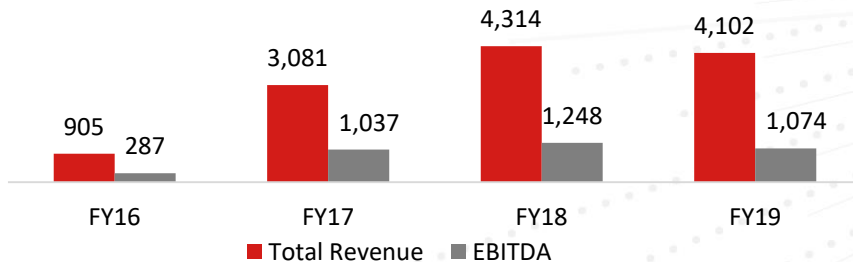


- Alphageo (India) Ltd. (Alphageo) is engaged in providing seismic data acquisition services to the oil exploration and production sector.
- Its services include design and pre-planning of 2D and 3D surveys, seismic data acquisition, data processing, data interpretation, generation, evaluation, and ranking of prospects, reservoir data acquisition and reservoir analysis.
- Until 2005, Alphageo offered only 2D acquisition services but its decision to start offering 3D was a game changer in the Indian Seismic Services Industry.
- It became the first Indian Company to offer 3D acquisition services for identifying subterranean deposits with accuracy.
- Alphageo operations are spread across North-East, Southern and

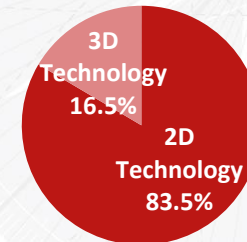
Western India.

- The Company's clients include large national and international oil majors like ONGC, Oil India Limited, GAIL (India), Petronas Carigali Inc. etc.
- Alphageo has acquired over 47,500 GLK, processed over 31,000 LKM, interpreted over 15,000 LKM of 2D seismic data and acquired over 7,000 Sq. Km of 3D seismic data in the last 6 years.
- Presently, the Company has 17 crews, it has also achieved a channel count in excess of 30,000 which is the highest in India.
- Diversifying into other forms of Geophysical services i.e. airborne surveys and geophysical mapping surveys through gravity and magnetic methods

Total Revenue (INR Mn) and EBITDA (INR Mn)



Revenue Break-Up FY19



BOARD OF DIRECTORS

Mr. Dinesh Alla (Chairman and Non- Executive Director)

He is a post graduate from BITS, Pilani and has very rich experience and deep knowledge in seismic / geophysical services for hydrocarbons and mineral exploration.

Ms. Savita Alla (Joint Managing Director)

She is a post graduate in Management studies from BITS, Pilani. She served in various managerial positions in corporate sector.

Mr. Rajesh Alla (Non-Executive Director)

He is a post graduate engineer from Carnegie Mellon University, Pittsburgh, USA and has specialized in Image Processing, Computer Vision and Robotics

Mr. Mohan Krishna Reddy (Non-Executive Director)

A finance professional with 3 decades of experience. He has a Master's Degree in Financial Management from Jamnalal Bajaj Institute of Management.

Mr. Ashwinder Bhel (Independent Director)

He has a Master's in Business Administration from Case Western Reserve University, Cleveland, Ohio with over two decades of rich and varied experience in the Oil Industry.

MANAGEMENT TEAM

Mr. Venkatesa Perumallu Pasumarthy - Chief Financial Officer - Qualified Chartered Accountant. He has over 30 years of experience of finance, taxation and accounting matters.

Ms. Deepa Dutta - Company Secretary - An Associate Member of Institute of Company Secretaries of India. She has completed her graduation in commerce from Patna University. She has around 3 years of experience.

Mr. Balaji Sundararajan - Sr. Vice President (SVP)-Operations - A graduate in Engineering and post-graduate in Mathematics from BITS Pilani. He has over 30 years of experience of which 18 years is in Seismic Industry.

Mr. Anthony Raymond Cheshire - Vice President (Technical Services) - An honours graduate with more than 40 years of experience in the geophysical exploration industry.

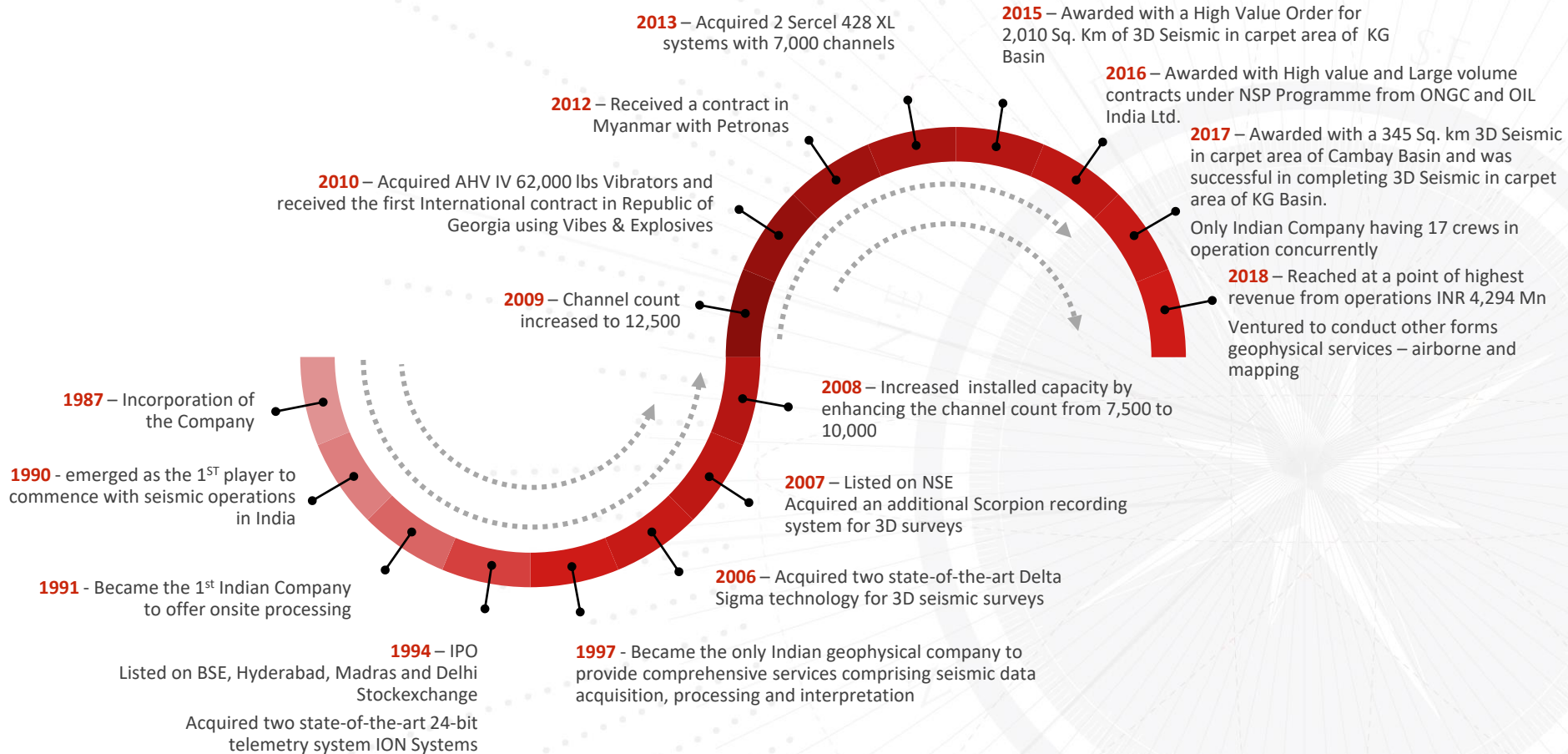
Mr. Yogendra Nath Singh - Vice President (Operations) - Holds a Master's Degree in Exploration Geophysics from Banaras Hindu University and has more than 35 years of experience in the seismic industry.

Dr. A.K Chaturvedi - Vice President (Airborne Surveys) - Holds Master's Degree from IIT Kanpur and PhD from Osmania University. He has more than 38 years of experience and specialises in Airborne Surveys, Remote Sensing and GIS based Projects

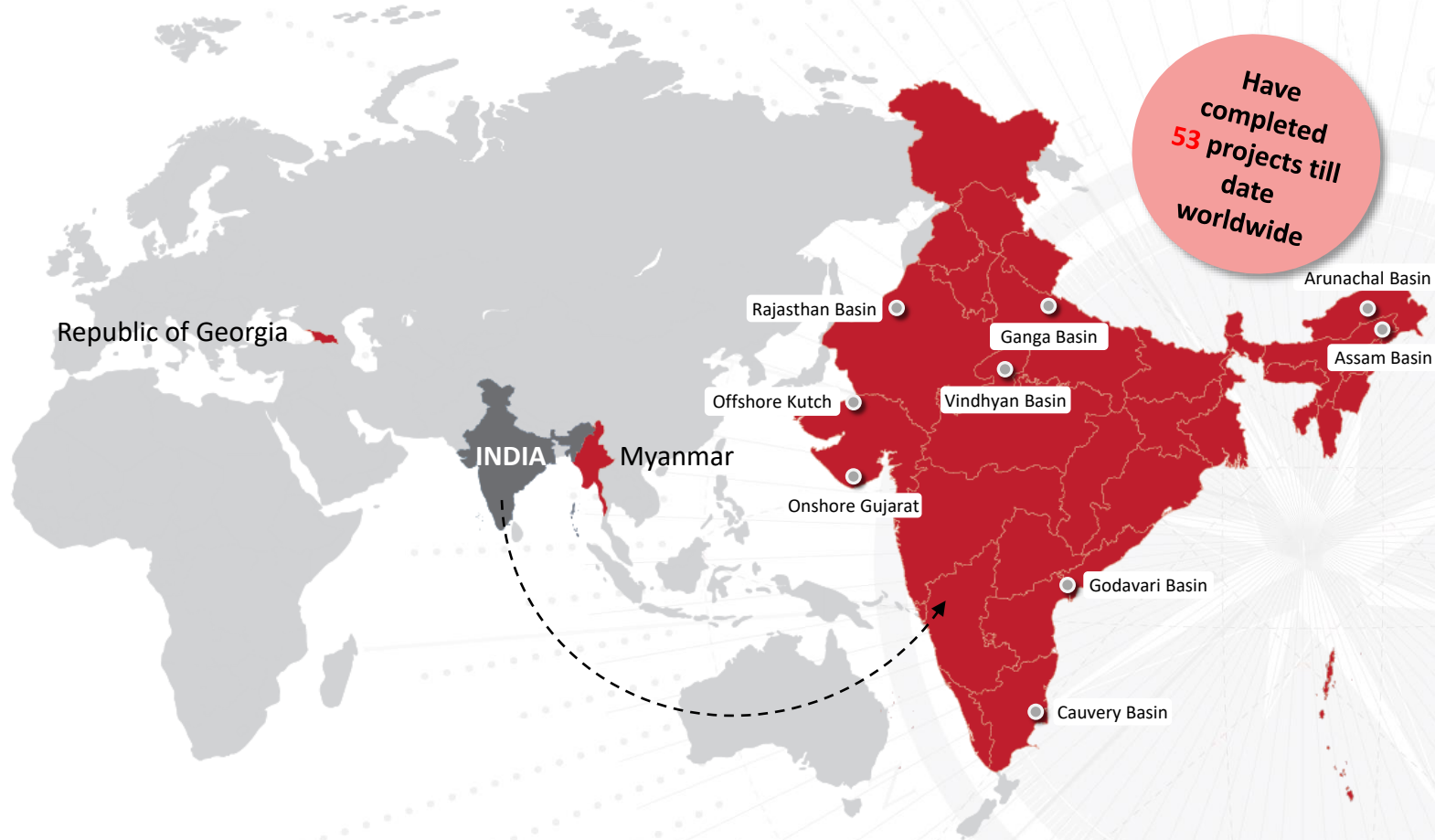
Mr. Thomas Ajewole - Chief Seismologist - Holds a Degree in Geophysics and has more than 22 years of experience in the seismic industry. He has held functional roles of Seismologist and Party Chief of 2D and 3D onshore data acquisition projects.

Mr. Suresh Rahul Bellap - General Manager (Contracts) - Holds a Bachelor's Degree in Engineering (Mechanical) and has more than 30 years of experience in different industries.

Key Milestones -2019



Geographical Presence



Key Clients



ऑयल इंडिया लिमिटेड
Oil India Limited



Awards & Accolades



Excellence in Financial Reporting from ICAI for FY 2014-15

2015



FE CFO of the year 2019 by Express Group

2015

198th of 1000 fastest growing companies in Asia Pacific

2018



Excellence in Financial Reporting from ICAI for FY 2013-14

2014



12 Key Strengths

Clients

include all leading National & international Oil & Gas companies



Diverse Experience

in understanding of diverse topographies



Financials

boasts of Strong Metrics including low Debt-to-Equity Ratio



Technology

and Art Equipment are modern and state-of-the-art



Project Management

is carried out professionally across different regions



Execution

is timely & cost-effective

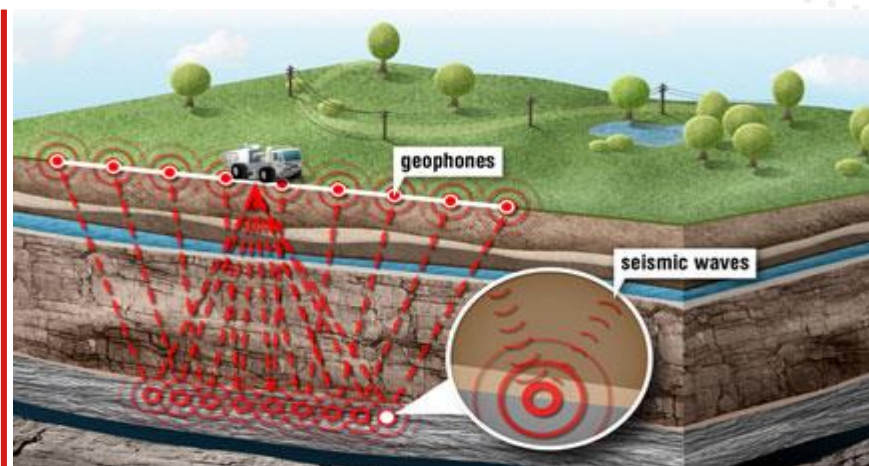




Business Overview

Why Seismic Surveys?

- Seismic surveys are primarily used for oil and gas exploration.
- Seismic surveys use reflected sound waves to produce a 'CAT scan' of the Earth's subsurface.
- Seismic images are produced by generating, recording, and analysing sound waves that travel through the Earth (such waves are also called seismic waves). Explosives or vibrating plates generate the waves and a line or grid of geophones records them.
- The seismic waves are created either by small explosive charges set off in shallow holes (shot holes) or by large vehicles equipped with heavy plates ('Vibroseis' trucks) that vibrate on the ground.
- By analysing the time it takes for the seismic waves to reflect off the subsurface formations and return to the surface, a geophysicist can map subsurface formations and anomalies and predict where oil or gas may be trapped in sufficient quantities for exploration activities.



Vibroseis Truck



Explosive



Geophone



2D Technology

- Until recently, seismic surveys were conducted along a single line on the ground, and their analysis created a two-dimensional picture akin to a slice through the earth beneath that line, showing the subsurface geology along that line.
- This is referred to as two-dimensional or 2D seismic data.

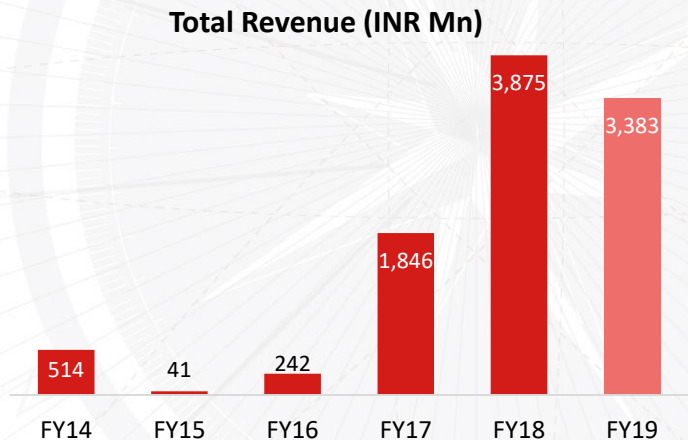
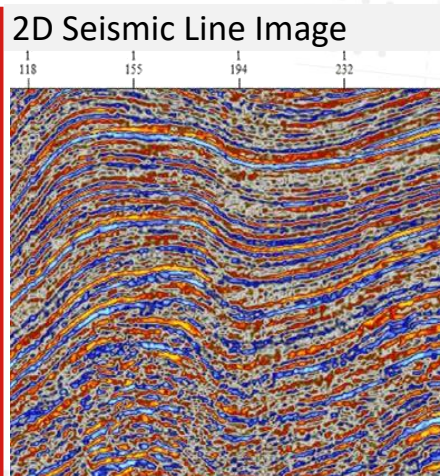
+ Easiest Survey Method

Relatively inexpensive method

Images are not of good quality

Anomalies are harder to map

Not effective in some locations



3D Technology

- The basic method of testing is the same as 2D, but instead of a single line of energy source points and receiver points, the source points and receiver points are laid out in a grid over the area to be surveyed.
- The receiver points – to record the reflected vibrations from the source points – are laid down in parallel lines (receiver lines), and the source points are laid out in parallel lines that are approximately perpendicular to the receiver lines.



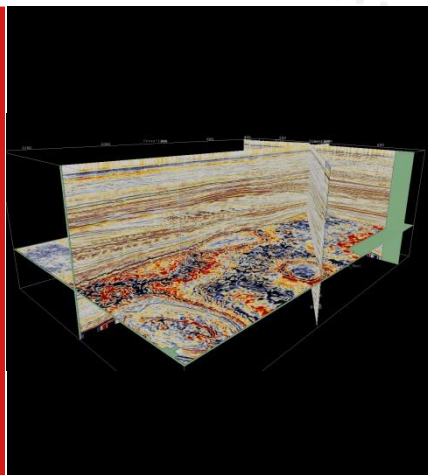
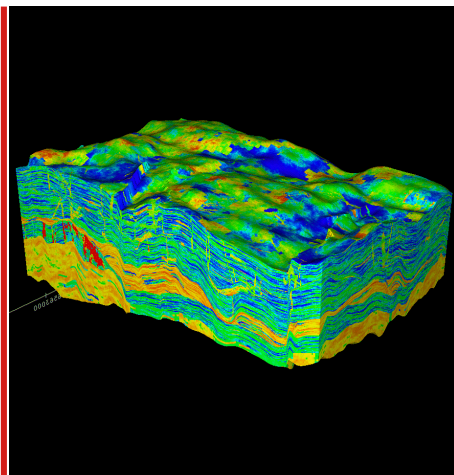
It is easy to recognize structure in almost every type of terrain.

It is accurate.

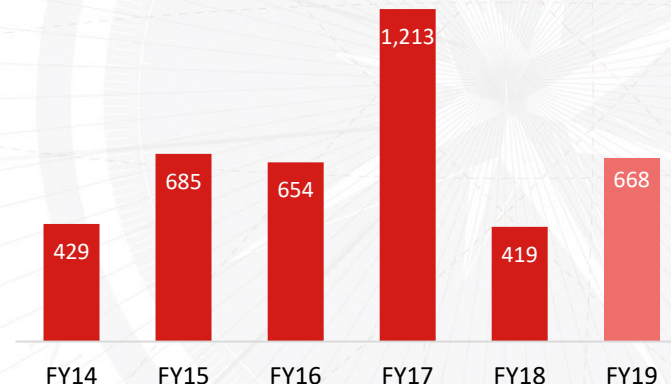
It enables detailed mapping of structures.

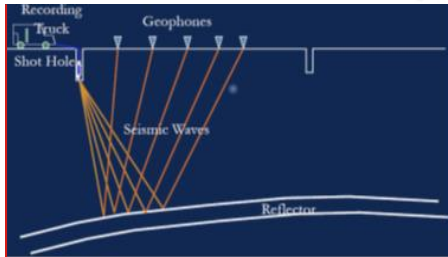
It is expensive.

Conversion of seismic data to acceptable format can be time consuming.



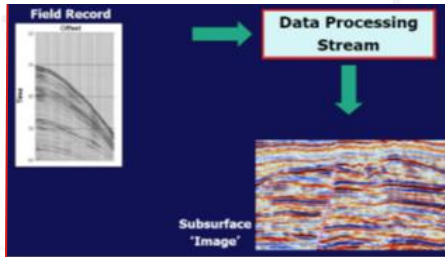
Total Revenue (INR Mn)





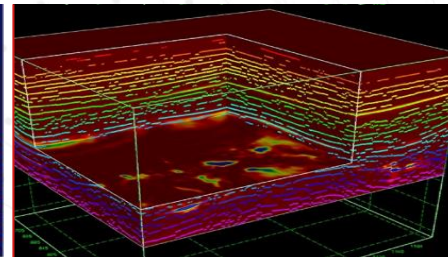
Data Acquisition

- Surveys are designed based on parameters and objectives defined in 2D, 3D and 3C surveys. Direction & layout of lines is also decided.
- Activities are pre-planned based on exclusion zones, inaccessible zones and methodology used to cover the area below exclusion and inaccessible zone is laid down.
- Accuracy and tolerance limit of topographic survey and other aspects of seismic survey is defined.
- Seismic data acquisition in 2D/3D/3C.



Data Processing

- The data recorded from a seismic survey is originally in its 'raw' form.
- Before it can be used, it must go through a series of computerized processes. These processes make the data useable and require powerful computers and sophisticated computer programs.
- Processing of data can be very expensive, depending on the size of the area surveyed and the amount of data acquired.



Data Interpretation

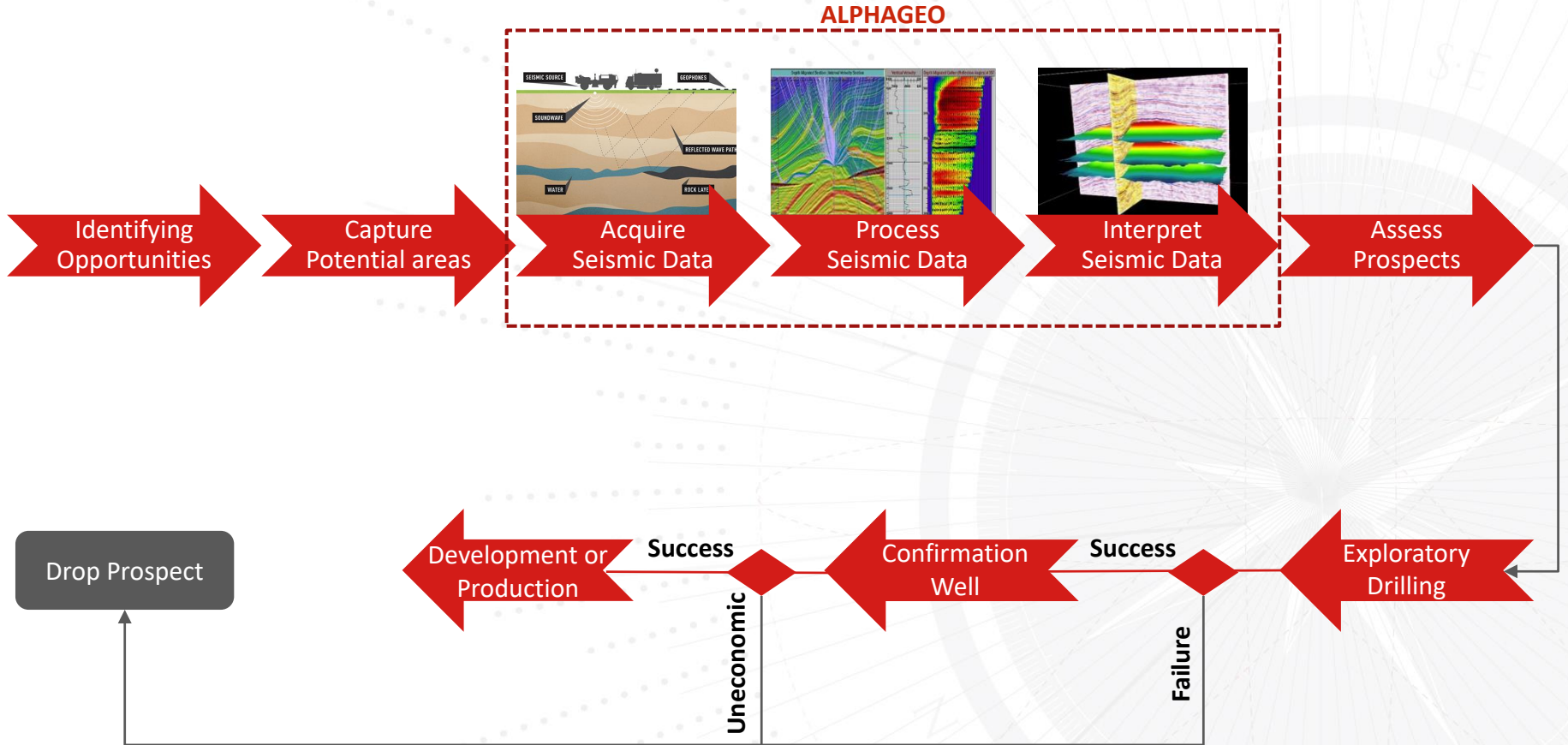
- Finally, the resulting processed data must be interpreted by the geophysicist or geologist.
- No two experts will interpret data identically.
- Geology is still a subjective science. The proper interpretation of 3D data is a critical step in the process.
- Data interpretation services include structural and stratigraphic interpretation, generation, evaluation and ranking of prospects and evaluation of blocks for exploration.



Other Services

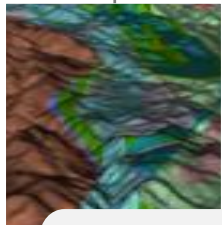
- Consultancy is provided in studying / analyzing the available data, identifying the need, pre-planning and laying down strategy for acquisition of these data and designing, delineation, development and extent of depletion of the field.
- EM & GM services of API.
- Topographic surveys with GPS and RTK.
- Reservoir data acquisition and Analysis.
- Airborne surveys for mineral exploration; Geophysical mapping surveys through gravity and magnetic methods for identification of potential areas from mineral prognostication point of view.

Typical Flowchart of Oil & Gas Exploration Companies



Detailed Services Flow Chart

Preparation



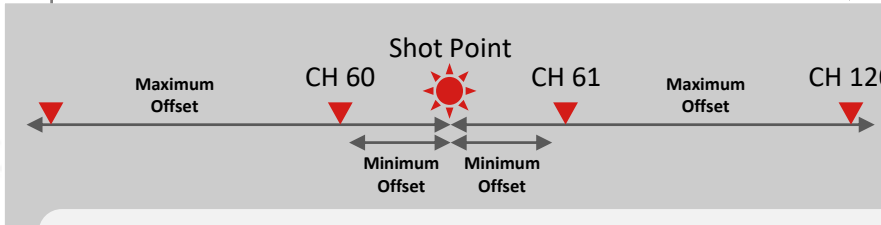
Geological Data

- Data is gathered through Topographic maps & Aerial Photos to determine which basins hold sufficient potential.

Geophysical Data

- Data is then gathered to determine the characteristics and images of the subsurface.

Planning & Designing



Shot Points & Layout

- To image the subsurface, decision is made on the placement and layout of shot point (source) and geophones. It also involves the usage of dynamite, vibroseis trucks, hammer or weight drop as a source type.



Contd. On next slide

Detailed Services Flow Chart

Execution



1

GPS used by the Survey Crew for locating the Source & Receiver Points of the Seismic lines, carried on their shoulders.



Source Point



Receiver Point

2

After locating the points, the crew mark the places of source and receiver points finally marking a seismic line.



3

Drilling Crew uses Jackhammers for shallow holes.



4

After drilling shot holes, dynamite is loaded in them using dynamite sticks and detonators.



5

Other than dynamite, Vibroseis trucks are also used.



6

The crew lay out the Geophones on the seismic lines as a spread.



7

These geophones are connected to each other by the Takeout Cable.



8

Geophone Plantation is then done.



9

All the Geophones are connected to a recording truck through which all the information goes into it



10

Recording is then done in the recording truck.



11

The tape driver records all the data on the magnetic tapes or cartridges.



12

The data is recorded in Seismograph.

Order Book / Bid Book Visibility

INR 1,314.45 Cr
order



- Acquisition of 2D Seismic Data on un-appraised land areas of Indian Sedimentary Basins of India, as a part of the National Seismic Program by June 2019.
- Execution of the contract involves addition of 10 seismic crew members to work in various sectors of India covering the states of Karnataka, Maharashtra, Gujarat, Rajasthan, MP, Uttarakhand, Himachal Pradesh and Kashmir to acquire an estimated 26,905 LKM of 2D seismic data.
- Acquisition of 2D Seismic Data in South Geleki Area of Assam & Assam Arakan Basin of India.
- Acquisition of 2D Seismic Data in Ganga-Punjab Basin.

INR 50.37 Cr



- Airborne Geophysical Surveys in India.
- Ground Geophysical Mapping Survey for creating gravity and magnetic maps with high-quality data on ground to delineate the subsurface geology and structures which will help in identification of the target areas for mineral exploration.

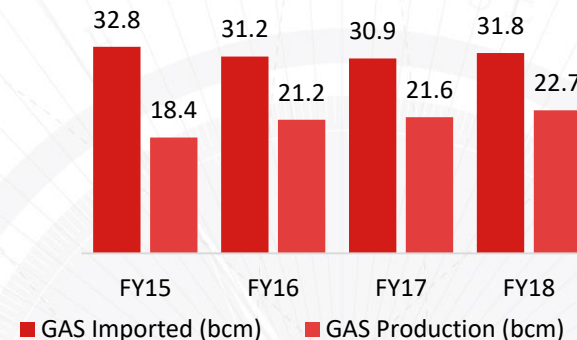


Industry Overview

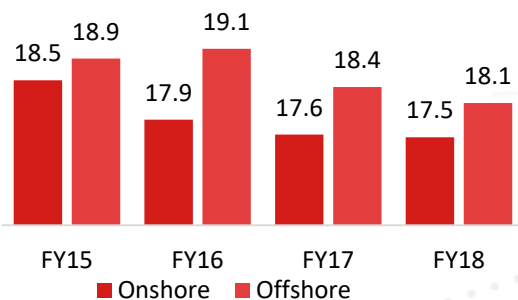
Oil & Gas Industry

- In India, the Oil and Natural Gas industry has huge potential and contributes over 15% to the India's GDP.
- Prime Minister Narendra Modi's envisions to reduce imports by at least 10% by 2022.
- There are three ways to operationally reduce import dependency of India for oil and natural gas:
 - Enhance production from the producing fields.
 - Reduce depletion rate in the producing fields which are ageing.
 - Discover new basins by appraising the unexplored areas.

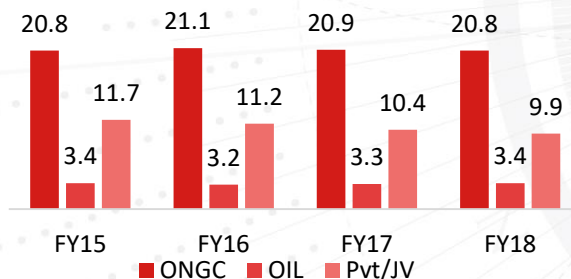
Domestic Gas Production and Imports (Bcm)



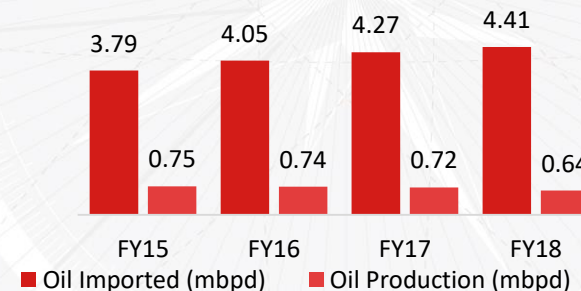
Annual crude oil production (in MMT)



Crude Oil Production (in MMT)



Domestic Oil Production and Imports (Mbpd)



What is OALP?

- The Open Acreage Licensing Policy (OALP) was launched in June 2017 as part of the Hydrocarbon Exploration Licensing Policy (HELP). Round-I under the OALP was the first auction of oil and gas exploration blocks in the country in eight years.
- Under OALP, the companies can carve out which geographical areas (blocks) they want to carry out exploration and development activities in — with the help of the geological & geophysical (G&G) data on India's sedimentary basins stored in the newly launched National Data Repository (NDR).
- The companies can submit Expressions Of Interest (EOIs) at any time of the year and the OALP also allows for bidding to take place a number of times in a year, but the government has indicated that as of now, EOIs would be accumulated and bidding would take place twice a year.

Opportunities under OALP

- A total of 32 oil and gas blocks (out of 37 on offer) were allotted in the second and third rounds of auction under the new Open Acreage Licensing Policy (OALP). This means that 87 blocks — in total — have been given away in the three rounds of auction under the OALP since last August when the first awardees were announced.
- Vedanta has won 51 blocks in three rounds, State-run Oil India Limited (OIL) won 12 blocks — six each in both rounds, Oil and Natural Gas Corporation (ONGC) — won 8 blocks in two rounds, Indian Oil Corporation (IOC) while Reliance Industries Limited (RIL), along with its British partner and global oil behemoth BP Plc, also won one block.
- Of the 14 blocks offered in round-II, eight are on land, five are in shallow water, and one is in ultra-deep water. In round-III, out of the 23 blocks on offer, 19 are on land (including five coal-bed methane), three in shallow water, and one in deep water.

Advantage India



Growing demand

India is the world's third largest energy consumer globally.

Demand for primary energy in India is expected to increase threefold by 2035 to 1,516 Mn tonnes of oil.



Rapid Expansion

The oil and gas industry is growing robustly and players are undertaking investments to cater to the burgeoning demand.

The industry is expected to attract USD 25 Bn investments in exploration and production by 2022.



Policy Support

The Government has enacted various policies such as the OALP policy to encourage the investments.

In September 2018, the Government of India approved fiscal incentive to attract investments and technology to improve recovery from oil fields which is expected to lead to hydrocarbon production worth INR 50 lakh Cr (USD 745.82 Bn) in the next twenty years.



Supportive FDI Guidelines

The government allows 100 per cent Foreign Direct Investment (FDI) in upstream and private sector refining projects.

I
A
D
V
A
N
T
A
G
E



Government

Policy

Hydrocarbon Exploration and Licensing Policy (HELP) was introduced in 2016, in order to revamp the oil and gas sector and address various industry concerns in the New Exploration and Licensing Policy (NELP) regime.

Uniform License

Unlike the multiple license model under NELP, HELP brings in a uniform licensing model.

Open Acreage Policy

Companies can choose blocks of their choice from the designated area round the year without waiting for roadshows and auctions like in NELP.

Revenue Sharing Model

Lower Royalty

A graded system has been introduced Under HELP and lower royalty as compared to NELP has been provided to encourage exploration and production.

National Seismic Programme (NSP) was introduced in 2016, in order to generate seismic data for initiating E&P activities, which envisages 2D seismic surveys of all sedimentary basins of India.

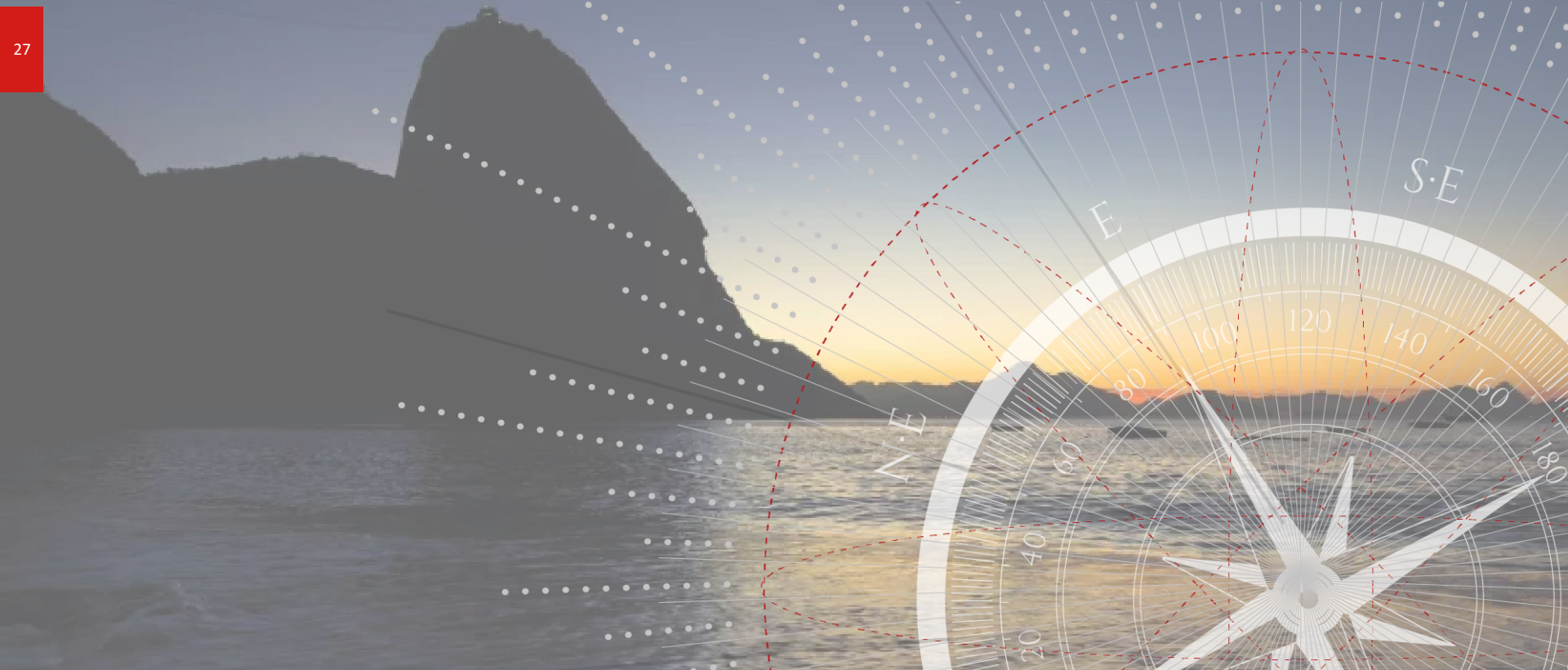
ONGC has been assigned to carry out the survey of **40,835 LKM** in 18 states.

OIL has been assigned to carry out 2D seismic API of 7,408 LKM in North Eastern states.

Discovered Small Fields was introduced in 2016, with a prime objective to bring Discovered Small Fields to production at the earliest so as to increase the domestic production.

No cess on the oil production and Customs duty exemptions.

Marketing and Pricing Freedom for Crude Oil and Natural Gas.



Financials

Historical Standalone Income Statement

INCOME STATEMENT (INR Mn)	FY16	FY17 [#]	FY18 [#]	FY19 [#]
Total Income *	702	2,979	4,311	4,102
Total Expenses	540	2,029	3,108	3,036
EBITDA	162	950	1,203	1,066
EBITDA Margin (%)	23.08%	31.89%	27.91%	25.99%
Depreciation	52	180	280	268
Finance Cost	7	41	55	30
PBT	103	729	867	768
Tax	33	249	305	269
Prior Period Adjustments	-	-	-	-
Profit After Tax	70	480	562	499
PAT Margin (%)	9.97%	16.11%	13.04%	12.16%
Other Comprehensive Income (Net of Tax)	-	-	1	-
Total Comprehensive Income	70	480	563	499
Diluted EPS (INR)	12.34	81.50	88.80	78.40

* Includes other income

[#] As per IND-AS

Standalone Balance Sheet (IND-AS)

PARTICULARS (INR Mn)	FY18	FY19	PARTICULARS (INR Mn)	FY18	FY19
EQUITIES & LIABILITIES			ASSETS		
Shareholder Funds			Non-Current Assets		
a) Share Capital	64	64	a) Property, Plant & equipment	940	765
b) Reserves & Surplus	1,995	2,432	b) Capital work-in-progress	10	10
			c) Intangible assets	33	14
Non-Current Liabilities			d) Trade Receivables	-	-
a) Long-Term Borrowings	1	-	e) Deferred tax assets	69	97
b) Long-term Provisions	12	11	f) Other Non-current Assets (including investment)	136	134
c) Trade Payable	-	-	Current Assets		
Current Liabilities			a) Inventories	5	5
a) Short-term Borrowings	461	278	b) Financial Assets	-	-
b) Trade Payables	704	783	i) Trade Receivables	1,960	1,639
c) Other Financial Liabilities	129	107	ii) Cash & Cash Equivalents	224	1,003
d) Other Current Liabilities	95	68	iii) Short-Term Loans & Advances	4	-
e) Short-Term Provisions	2	3	c) Other Current Assets	26	54
f) Current Tax Liabilities	-	-	d) Current tax Asset	56	25
GRAND TOTAL - EQUITIES & LIABILITIES	3,463	3,746	GRAND TOTAL – ASSETS	3,463	3,746

Historical Consolidated Income Statement

INCOME STATEMENT (INR Mn)	FY16	FY17 [#]	FY18 [#]	FY19 [#]
Total Income *	905	3,081	4,314	4,102
Expenses	618	2,044	3,066	3,028
EBITDA	287	1,037	1,248	1,074
EBITDA Margin (%)	31.77%	33.66%	28.93%	26.18%
Depreciation	123	237	339	320
Finance Cost	7	41	56	30
PBT	157	759	853	724
Tax	40	253	308	270
Profit After Tax	117	506	545	454
PAT Margin (%)	12.92%	16.42%	12.63%	11.07%
Other Comprehensive Income	-	11	(15)	25
Total Profit including Comprehensive Income (Net of Tax)	117	517	530	479
Diluted EPS (INR)	20.65	85.74	86.05	71.35

* Includes other income

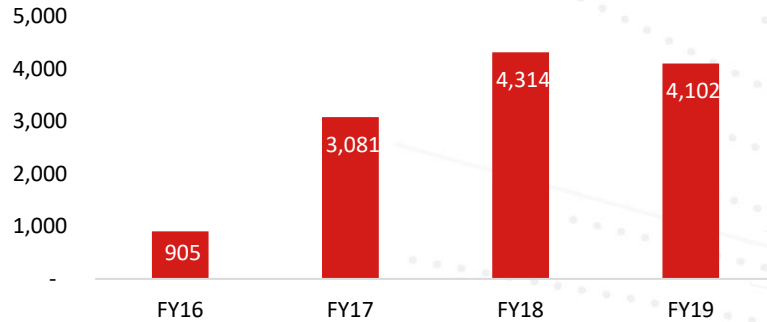
[#] As per IND-AS

Consolidated Balance Sheet (IND-AS)

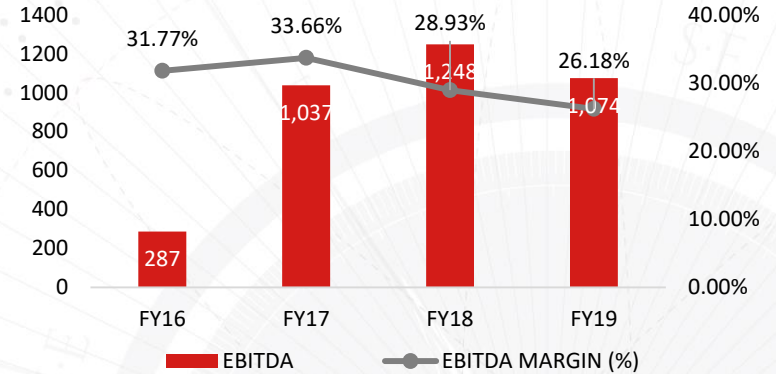
PARTICULARS (INR Mn)	FY18	FY19	PARTICULARS (INR Mn)	FY18	FY19
EQUITIES & LIABILITIES			ASSETS		
Shareholder Funds			Non-Current Assets		
a) Share Capital	64	64	a) Property, Plant & equipment	1,121	910
b) Reserves & Surplus	2,270	2,688	b) Capital work-in-progress	10	10
			c) Intangible assets	38	16
Non-Current Liabilities			d) Trade Receivables	-	-
a) Long-Term Borrowings	1	-	e) Deferred tax assets	69	97
b) Long-Term Provisions	13	11	f) Other Non-Current Assets (including investment)	4	1
c) Trade Payable	-	-	Current Assets		
Current Liabilities			a) Inventories	10	4
a) Short-Term Borrowings	461	278	b) Financial assets	-	-
b) Trade Payables	704	776	i) Trade Receivables	1,960	1,639
c) Other Financial Liabilities	130	108	ii) Cash & Cash Equivalents	389	1,237
d) Other Current Liabilities	95	68	iii) Short-Term Loans & Advances	56	-
e) Short-Term Provisions	2	2	c) Other Current Assets	27	56
f) Current Tax Liabilities	-	-	d) Current tax Asset	56	25
GRAND TOTAL - EQUITIES & LIABILITES	3,740	3,995	GRAND TOTAL – ASSETS	3,740	3,995

Key Financial Highlights

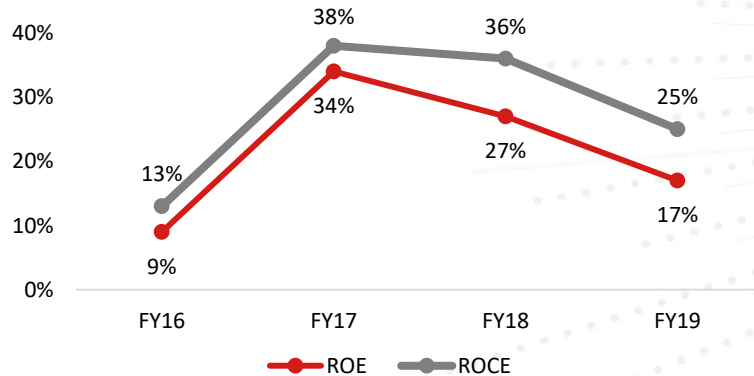
Total Revenue (INR Mn)



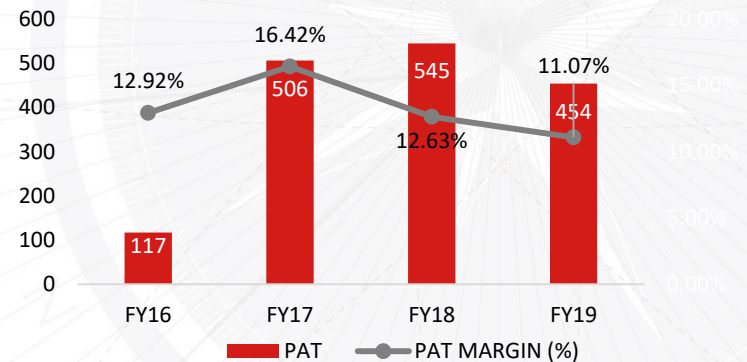
EBIDTA (INR Mn) & EBIDTA Margin (%)



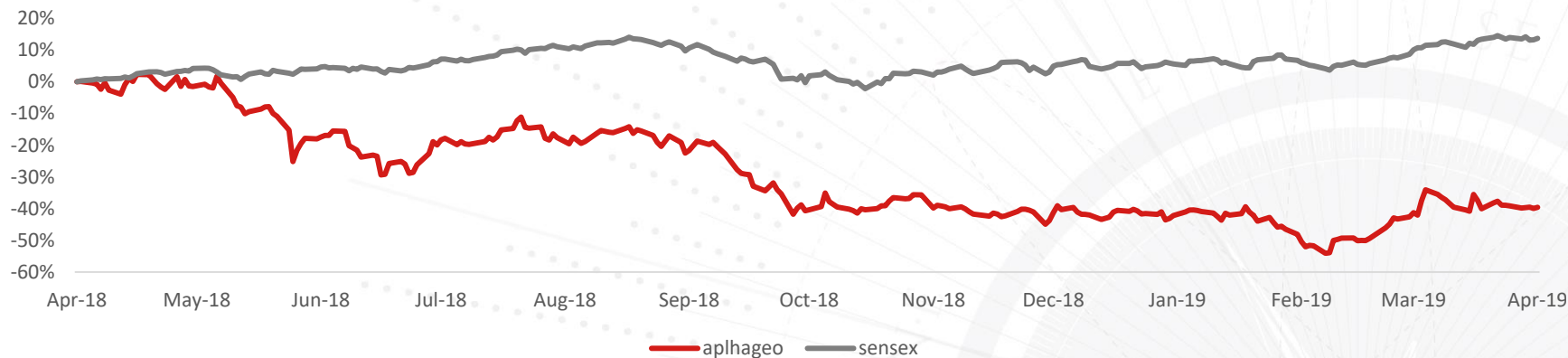
ROE(%) & ROCE (%)



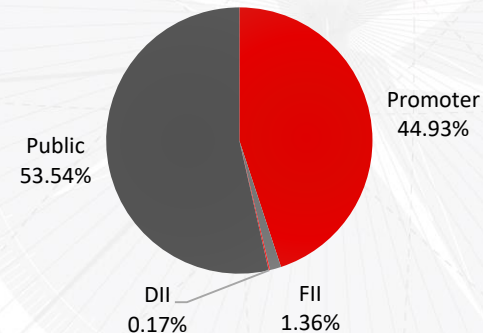
PAT (INR Mn) & PAT Margin (%)



Share Price Performance



Price Data (31 st March, 2019)	INR Mn
CMP	474.8
52 Week H/L (INR)	845.1/365
Avg. Net Turnover	1327.37
Market Cap (INR Mn) [Ranked 998 by NSE Market capitalisation as on March 31, 2019]	3063.4
Equity Shares Outstanding (Mn)	6.36

Shareholding Pattern as on 31st March, 2019

Alphageo (India) Limited Disclaimer:

The information contained in this presentation is only current as of its date. All actions and statements made herein or otherwise shall be subject to the applicable laws and regulations as amended from time to time. There is no representation that all information relating to the context has been taken care off in the presentation and neither we undertake any obligation as to the regular updating of the information as a result of new information, future events or otherwise. We will accept no liability whatsoever for any loss arising directly or indirectly from the use of, reliance of any information contained in this presentation or for any omission of the information. The information shall not be distributed or used by any person or entity in any jurisdiction or countries were such distribution or use would be contrary to the applicable laws or Regulations. It is advised that prior to acting upon this presentation independent consultation / advise may be obtained and necessary due diligence, investigation etc may be done at your end. You may also contact us directly for any questions or clarifications at our end. This presentation contain certain statements of future expectations and other forward-looking statements, including those relating to our general business plans and strategy, our future financial condition and growth prospects, and future developments in our industry and our competitive and regulatory environment. In addition to statements which are forward looking by reason of context, the words 'may, will, should, expects, plans, intends, anticipates, believes, estimates, predicts, potential or continue and similar expressions identify forward looking statements. Actual results, performances or events may differ materially from these forward-looking statements including the plans, objectives, expectations, estimates and intentions expressed in forward looking statements due to a number of factors, including without limitation future changes or developments in our business, our competitive environment, telecommunications technology and application, and political, economic, legal and social conditions in India. It is cautioned that the foregoing list is not exhaustive This presentation is not being used in connection with any invitation of an offer or an offer of securities and should not be used as a basis for any investment decision

Valorem Advisors Disclaimer:

Valorem Advisors is an Independent Investor Relations Management Service company. This Presentation has been prepared by Valorem Advisors based on information and data which the Company considers reliable, but Valorem Advisors and the Company makes no representation or warranty, express or implied, whatsoever, and no reliance shall be placed on, the truth, accuracy, completeness, fairness and reasonableness of the contents of this Presentation. This Presentation may not be all inclusive and may not contain all of the information that you may consider material. Any liability in respect of the contents of, or any omission from, this Presentation is expressly excluded. Valorem Advisors also hereby certifies that the directors or employees of Valorem Advisors do not own any stock in personal or company capacity of the Company under review.

For further details, please feel free to contact our Investor Relations Representatives:

Mr. Anuj Sonpal

Valorem Advisors

Tel: +91-22-4903 9500

Email: alphageo@valoremadvisors.com

THANK YOU