

**February 22, 2024**

To,  
National Stock Exchange of India Limited,  
Exchange Plaza  
Plot no. C/1, G Block,  
Bandra- Kurla Complex, Bandra (E),  
Mumbai - 400 051  
**NSE Symbol: JINDWORLD**

To,  
BSE Limited,  
Listing Department  
Phiroz Jeejeebhoy Tower,  
25<sup>th</sup> Floor, Dalal Street,  
Mumbai —400 001  
**Security Code: 531543**

Dear Sir/Madam,

**Subject: Presentation for Jindal Mobilitric Private Limited, subsidiary of the Company**

We are pleased to share a brief presentation on the vision statement, inter alia, the core management team, upcoming projects, geographical expansion, the technology, channel partners, dealership CI, service centre and the project synopsis for Jindal Mobilitric Private Limited, subsidiary of the Company in the EV sector.

For your information please.

**For Jindal Worldwide Limited**

**Amit Agrawal**  
**Vice Chairman & Managing Director**  
**DIN: 00169061**



Jindal Mobilitric Pvt Ltd

**Green | Electric | Autonomous**



# Vision



Since inception Jindal has been a brand with high standards and higher goals. With an aspiration to shape the future of Indian Electric Vehicle Industry with our contribution, we have always had an eye on the future of the Automobile industry to understand this field of endless possibilities. Planting a Greener tomorrow with Quality and Trust of Our Products.

"The future belongs to those who see possibilities before they become obvious." — John Scully

# Mission



With In-House Technological Innovations build entire Eco System for Intelligent yet Futuristic Vehicles to support the on-going Automobile Industry disruption for Greener Tomorrow.

We will not limit our-self only to B2C B2B B2G, we also believe to Go to H2H (Human to Human).

# Our Foray Into The Electric Vehicle Industry - Rationale & Proposed Investment



## Large Addressable Market

- With 25 Million 2 & 3 wheelers being sold in India each year, this is a large scalable opportunity with customers gradually adopting EVs..
- ICRA expects the 15-20 Million 2 & 3 Wheeler EVs on the road by 2030.

## Capital Availability

- The group has a strong balance sheet backing and ample capital availability from both internal and external forms.
- A strong relationship with almost all large banks and NBFCs enable debt raising at competitive terms.
- In talks with multiple large equity investors for an investment in the parent entity.
- Availability of capital from the promoter group

## Strong Pedigree

- Group is one of the most respected business entities in Gujarat and across India.
- Business has grown 100x in 20 years with no external equity support showing investment discipline and efficient capital utilisation.
- 2<sup>nd</sup> Gen from promoter group is running the business today and professionals from leading multinationals have been onboarded for various functions.



## An eye to the Future

- New business line being developed to keep in line with changing customer preferences with an eye to the future.
- The EV space is the dominant scalable new gen business opportunity for India and can be eventually used as an export hub for global multinationals as well.

## Strong Technology Tie-Up in Place

- Strong team in place that has put the technology and EV Business for Automotive OEMs.
- The team has built a strong technology platform and has the required know how to scale this opportunity.
- Internal capabilities being developed. Industry leaders onboarded team who are instrumental in the EV Disruption in India.
- Assembly and Battery Tech in place.

## B2C Diversification

- The group is de-risking its B2B focus with this B2C diversification.
- The consumption story in India is too large to be ignored and with this diversification, the group will have its presence across the entire value chain of large B2B and scalable B2C segments as well.
- Working with global brands all these years has given a deep understanding of the B2C space which will be used in this foray.



# Perfect blend of Leadership, Experience, Energy & complimentary skill sets ●●●

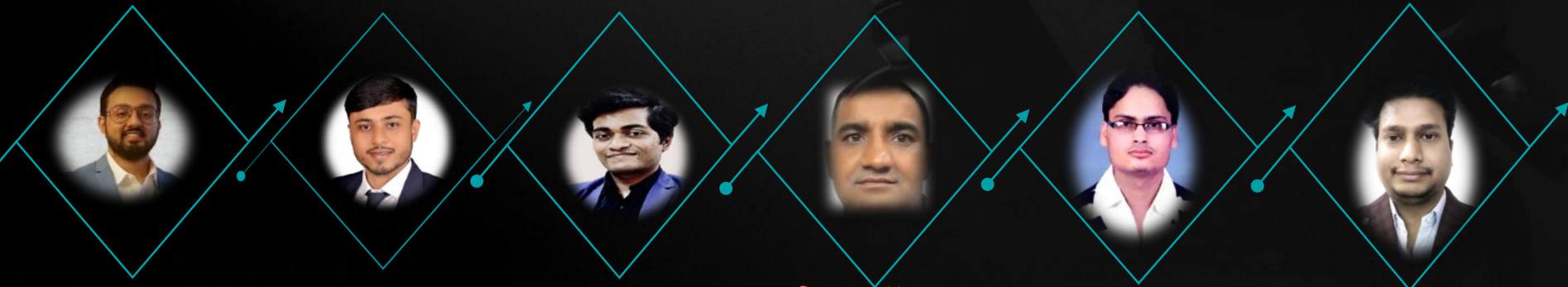


**Dr. Yamunadutt Agarwal**  
Chairman

**Amit Agrawal**  
Managing Director

**Puran Singh Negi**  
Senior Vice President

●●● JM Team Collective years of experience in Automotive ~200+ years



**Garvit Munjal**  
Design Lead

**Mukund Shinde**  
Mechanical Lead

**Ajay More**  
Embedded  
Software Lead

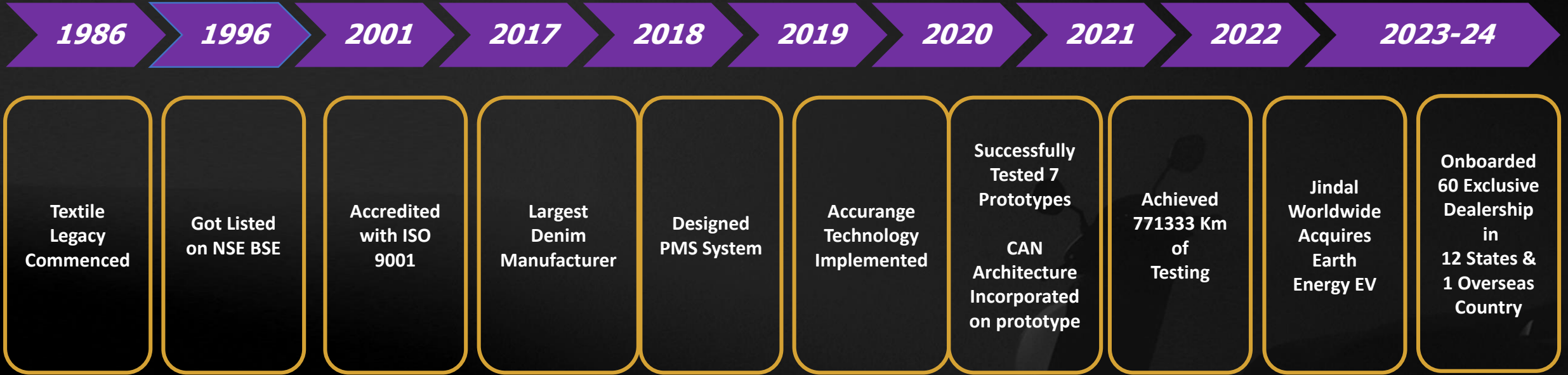
**Sanjay More**  
Vehicle  
Plant Head

**Deepak Sawaliya**  
Battery  
Plant Head

**Suraj Kumar Gupta**  
HMR Head



# Our Journey :

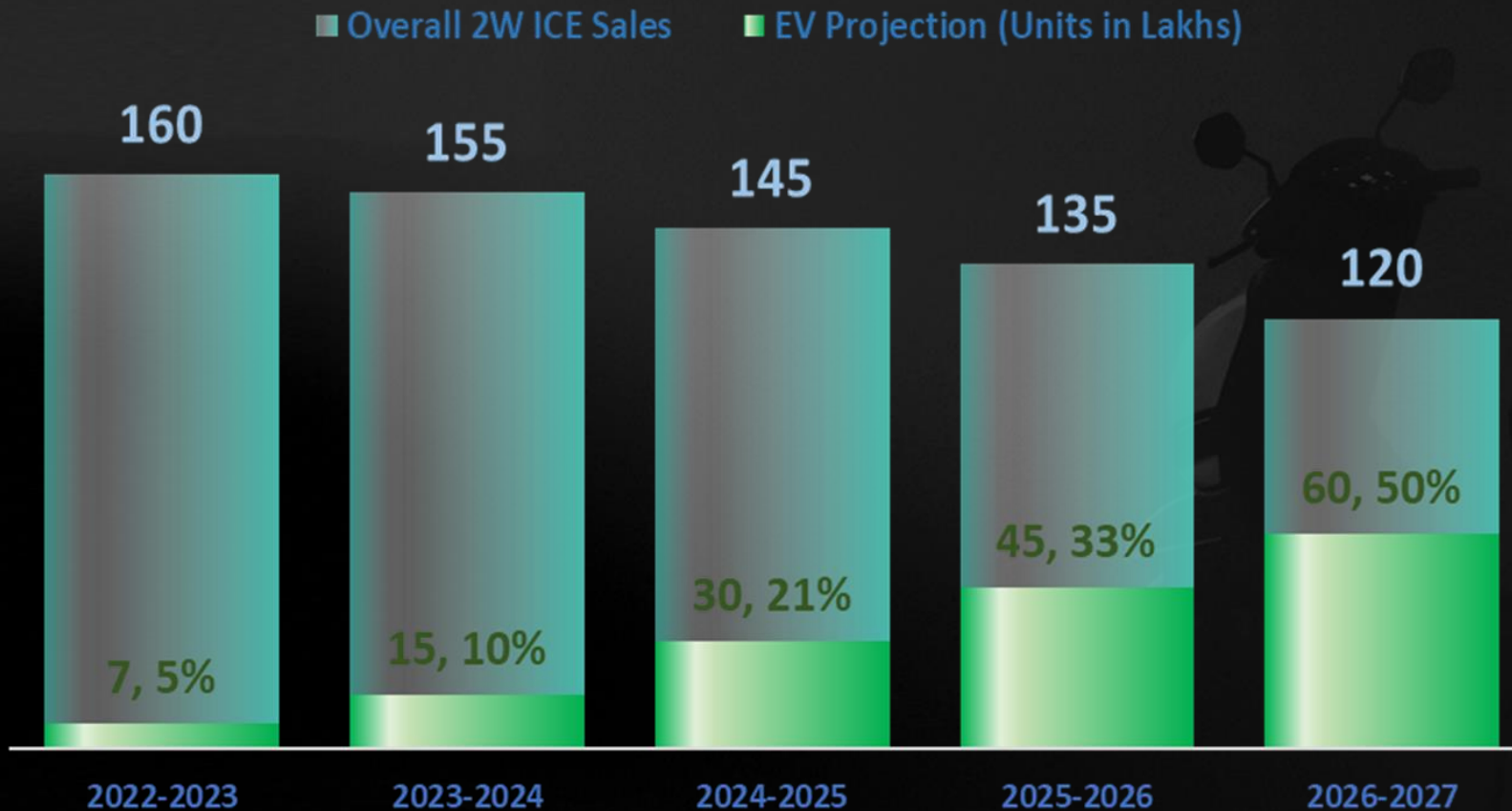


## Triumphs of Earth Energy EV powered by Jindal Mobilitric



# Support by Central & State Government & Potential 2-Wheeler EV & Gasoline

### Overall 2 Wheeler Sales Projection vs EV Projection



**AUTO PLI**  
25,931 Cr

**ACC PLI**  
18,100 Cr

**FAME II**  
10,000 Cr

**State Subsidy –**  
Max INR  
30,000

**Fame II Subsidy –**  
15%

**25 % capital**  
subsidy on  
Charging  
Station



# Why Jindal Mobilitric :



**36+ Years** Expetise  
of Quality & Trust



**Largest and Top-2** Globally  
in Denim Manufacturing



**NSE & BSE Listed** Organization  
since 1996



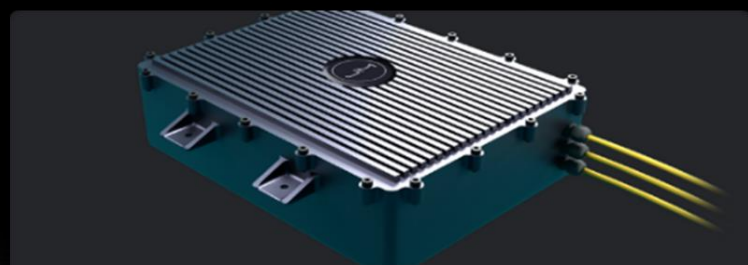
**INR 5000+** Crore  
Market Cap



**3000+** Dedicated Workforce  
in Jindal Family



**17.55 % CAGR**  
Over Last 5 Years



**In-House** Battery  
Manufacturing



**7 EV Prototypes**  
Built and Successfully tested



**In-House Technical Innovation Accu Range**  
(Accurate Range Prediction with AI Enabled Driver Pattern  
Analysis)

# Along with unmatched Value and Performance :



## Safe Battery Solution

LFP Chemistry  
Prismatic Cells

7.7 Lakhs

Test Hours

## Fast Charging

0-80% in  
2.5 Hrs

## Top Speed

95 Kmph



USP

## Vehicle Range

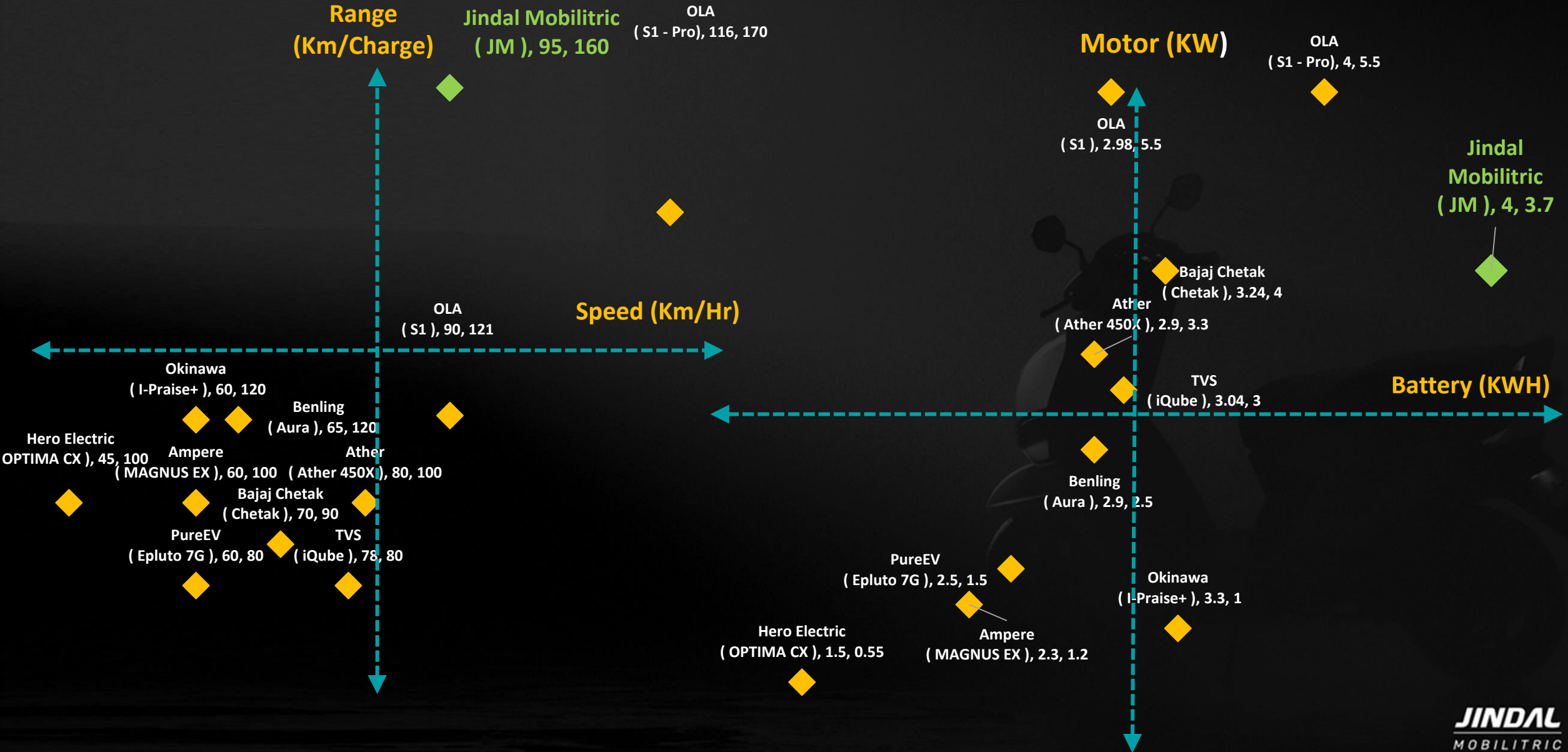
160 KM/Charge

0-40 Km in  
Just 3.5 Secs

3 Models with  
12 variants

## Smart Connectivity

# Competitive Landscape :



# Our Patents and Features:



173

Data Points  
Capture

61

Total Features

21

Unique Features

13+

Patents /  
Trademarks

## Intelligence

- **Smart Dashboard**
- 7" TFT Touchscreen
- Navigation
- Internal Storage of 32 GB
- RAM : 2 GB
- Arm Quadcore 2 Ghz processor
- 1024 \* 600 Pixels
- WiFi
- Bluetooth
- OTA Updates
- Internet Browsing
- Message / WhatsApp Alert Notifications
- Call Alert
- **App Based Smart Features**
- Live Fault reporting on App
- Variable Regen in App
- Mobile App For Android /IOS
- Speed Control
- Geo Fencing
- **OTA Based smart Features**
- OTA for batch based fault rectification
- OTA for Model Based fault rectification
- Dynamic Energy Usage Control
- Digital Clone
- **Accurance Technology**
- Accurate Range Prediction - in the range of +/- 2.5km/charge
- **CAN Based Technology**
- CAN Based Error Coding for all the failures
- Accurate Power Monitoring via BMS + PMS

## Performance

- **Motor and Drive Train**
- Variable Regen on Screen
- Guaranteed Minimum range
- High Gradeability
- IP 67 Rating
- PMSM technology
- High Tensile Belt Pully system
- **Battery and Charging**
- Smart Charging Stack
- SOH Tracker
- Fast Charging – 1.25 KW
- 0 to 80% in 2.5 Hour
- **Other Features**
- MID Drive Power Train
- Reverse Gear System
- Side stand sensor
- CBS System (Combined Brake System)
- 3 Riding Modes (ECO, JOY, PRO)
- Auto Hold
- Disc Brake
- Alloy Wheels
- All LED Lights
- DRL
- Position
- 26L Boot Space
- 45 NM Torque
- Top speed of 95 KMPH
- 0 to 40 in 3.5 Sec
- High 165mm Ground Clearance

## Riding & Safety

- **Power Train Safety**
- Driver Scoring
- Active Three stage Ignition Protection
- Active Aux System
- Temperature Based Rider Safety system
- **Battery Safety**
- IP 67 Rating
- Charge Control
- Active Ground monitoring
- Forced Battery Balancing
- Vehicle Auto OTA Possible
- Safest Cell Chemistry – LFP
- Thermal Alerts & Monitoring System
- Aluminum Battery Casing
- Thermal Quoting
- Thermal Pads
- Laser Welding
- Smart BMS
- Real Time Battery Monitoring System
- **SOS / Emergency**
- SOS & Accidental SOS
- Emergency Services
- **Other Common Features**
- Anti Theft System
- Road side Assistant (RSA)
- Vehicle Service Alert
- Real Time Tracking
- Geo Tagging
- Crash Detection

# Up-Coming Products

---

**JM | Electric | Future**

# Upcoming Products Plan:



**FY 2024-25**

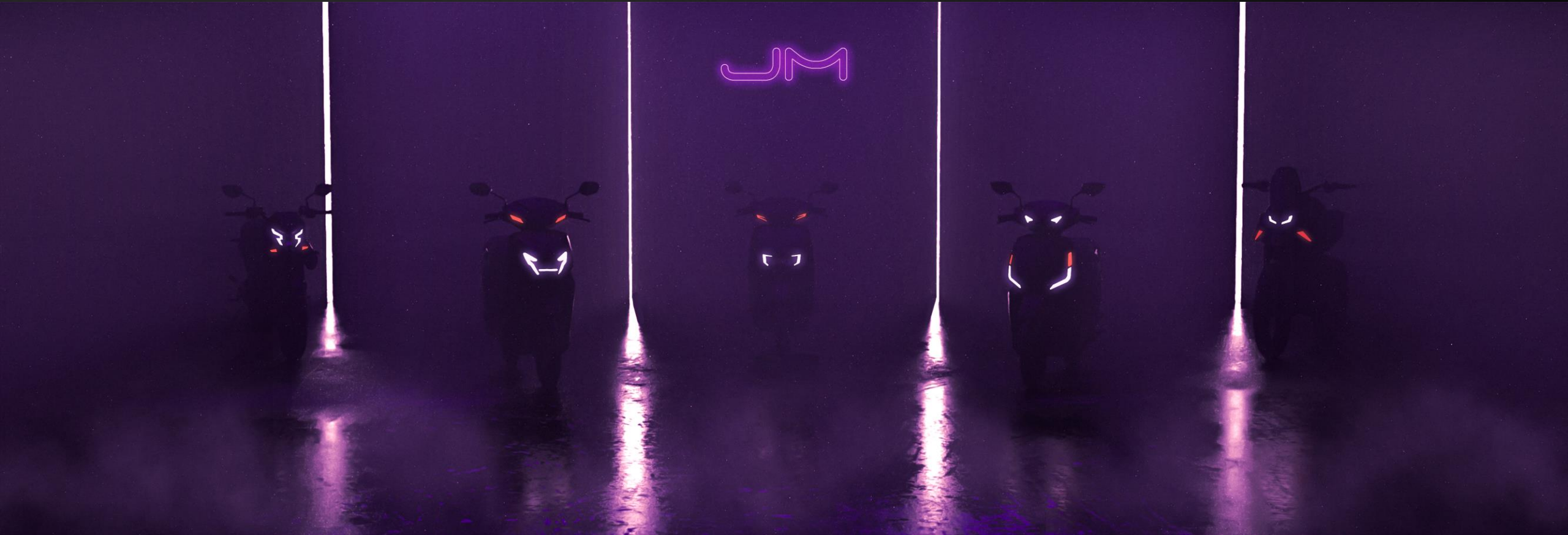
- **3 Scooter with 12 Variants – B2B & B2C**
- **1 Sports Bike with 2 Variants**

**FY 2025-26**

- **1 Commuter Bike with 2 Variants**
- **1 Moped**

**FY 2026-27**

- **1 Maxi Scooter**
- **1 Cruiser Bike with 2 Variants**



Up-Coming Product Range...

JM



Coming Soon...



# Technology

---

**JM | Electric | Future**



# HYPERCORE:



01

## Hypercore

Charging the Future : Introducing Our In-House EV Battery Technology



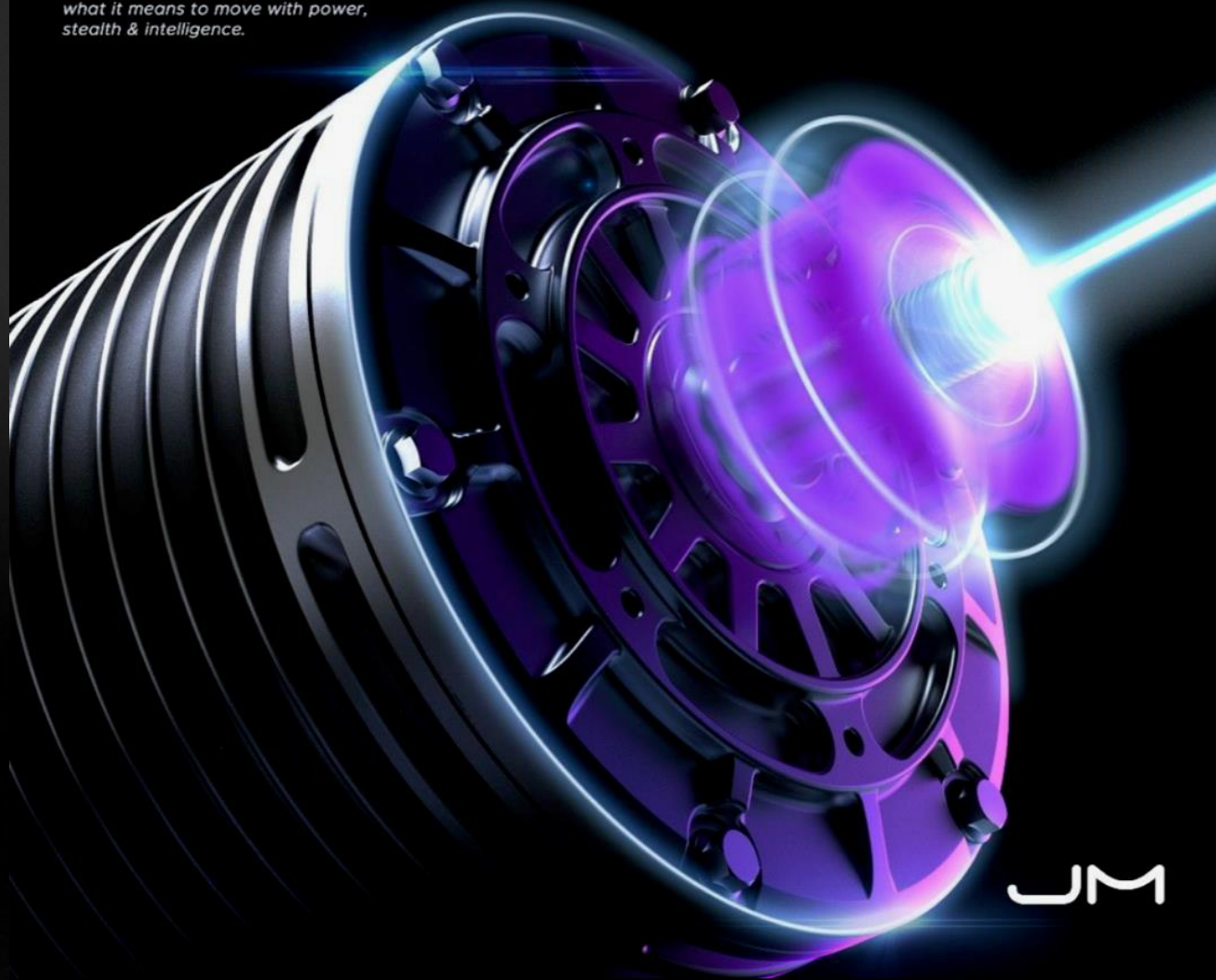
# VOLTCORE :

---

02

## Voltcore

*The electric motor that's redefining what it means to move with power, stealth & intelligence.*



# SMARTCORE:

03



## SMARTCORE

Drive the Future:  
Where Cutting-Edge Technology  
meets Exceptional Design.





04

# PULSECORE

*Charge ahead with unmatched efficiency  
and convenience.  
Power up faster, smarter, and with  
the utmost reliability.*



PULSECORE :



**JINDAL**  
MOBILITRIC

05

## SPACECORE

Spacecore will take care  
of all your need...



SPACECORE :

SAFECORE :

06

## SAFECORE

AT JM SAFETY IS OUR TOP PRIORITY  
WHICH COMES WITH  
SHORTER BREAKING DISTANCE..



JM

**JINDAL**  
MOBILITRIC

*BRIGHTCORE :*

07

## BRIGHTCORE

LED HEADLAMPS ALONG WITH DRLs AND PROJECTION LAMP  
WILL CHANGE THE WAY YOU LOOK THE WORLD.



JM

**JINDAL**  
MOBILITRIC



# Exclusive Channel Partners **JM | Electric | Future**

# THE FOOTPRINTS OF FUTURISTIC VISION

Our Presence in  
Automotive Electric Industry

Arriving to  
**Indore**



Arriving to  
**SURAT**



Arriving to  
**Ahmedabad**



Arriving to  
**Raipur**



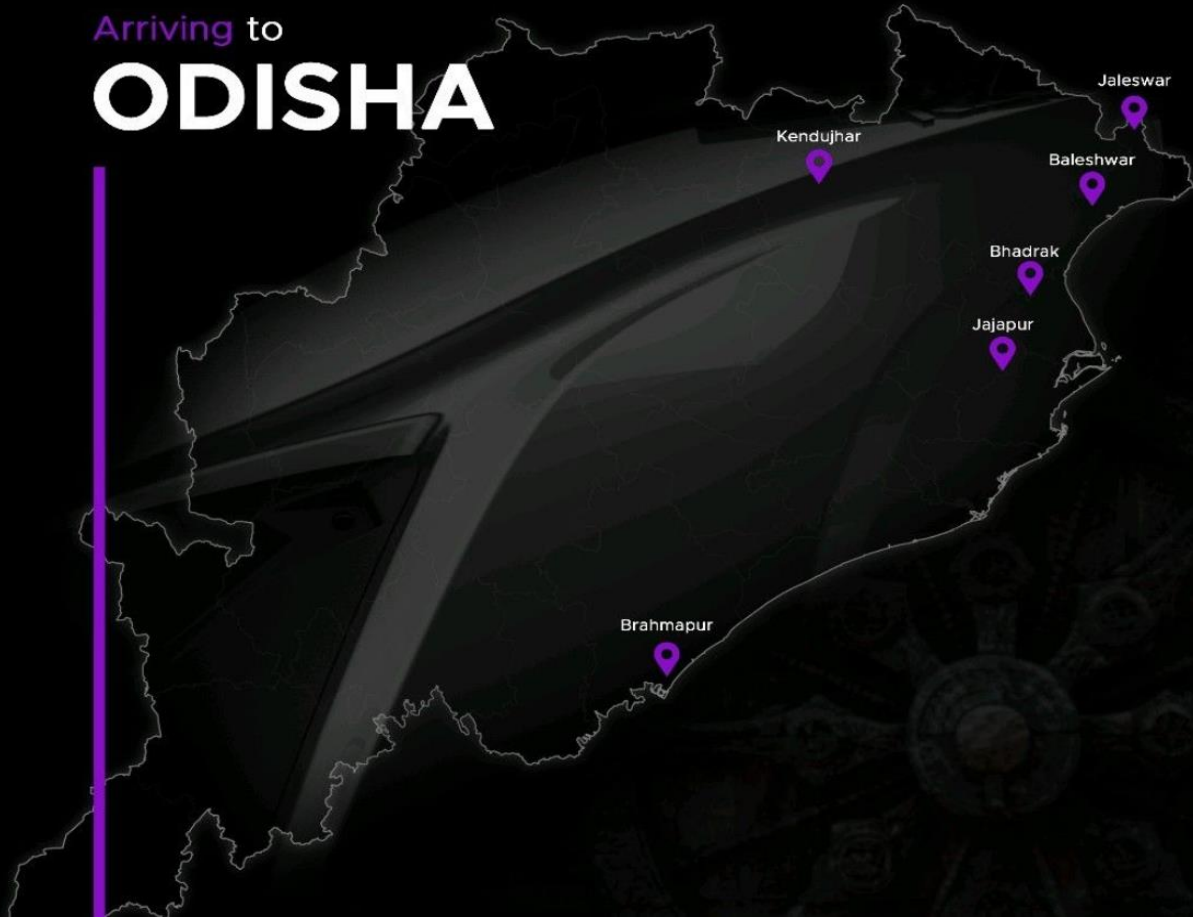
Arriving to  
**JAIPUR**



Arriving to  
**Pune**



Arriving to  
**ODISHA**



WE'VE  
REACHED,  
DIL SE  
TO DIL WALON  
KA SEHER,  
**DELHI**



**MAKING A MARK  
BEYOND OUR BOUNDARIES**



**WE ARE NOW IN  
NEPAL**



**JINDAL**  
MOBILITRIC

# Exclusive Dealership CI **JM | Electric | Future**

SCHEMATIC EXTERIOR VIEW OF  
THE PROPOSED FLAGSHIP STORE  
FOR JINDAL MOBILTRIC



INDIA'S  
ELECTRIC  
STRUCTURE



STORE VIEW FROM THE MAIN ENTRANCE OFFERS A STRIKING ESSENCE OF WHAT JINDAL MOBILITRIC OFFERS AND STANDS FOR



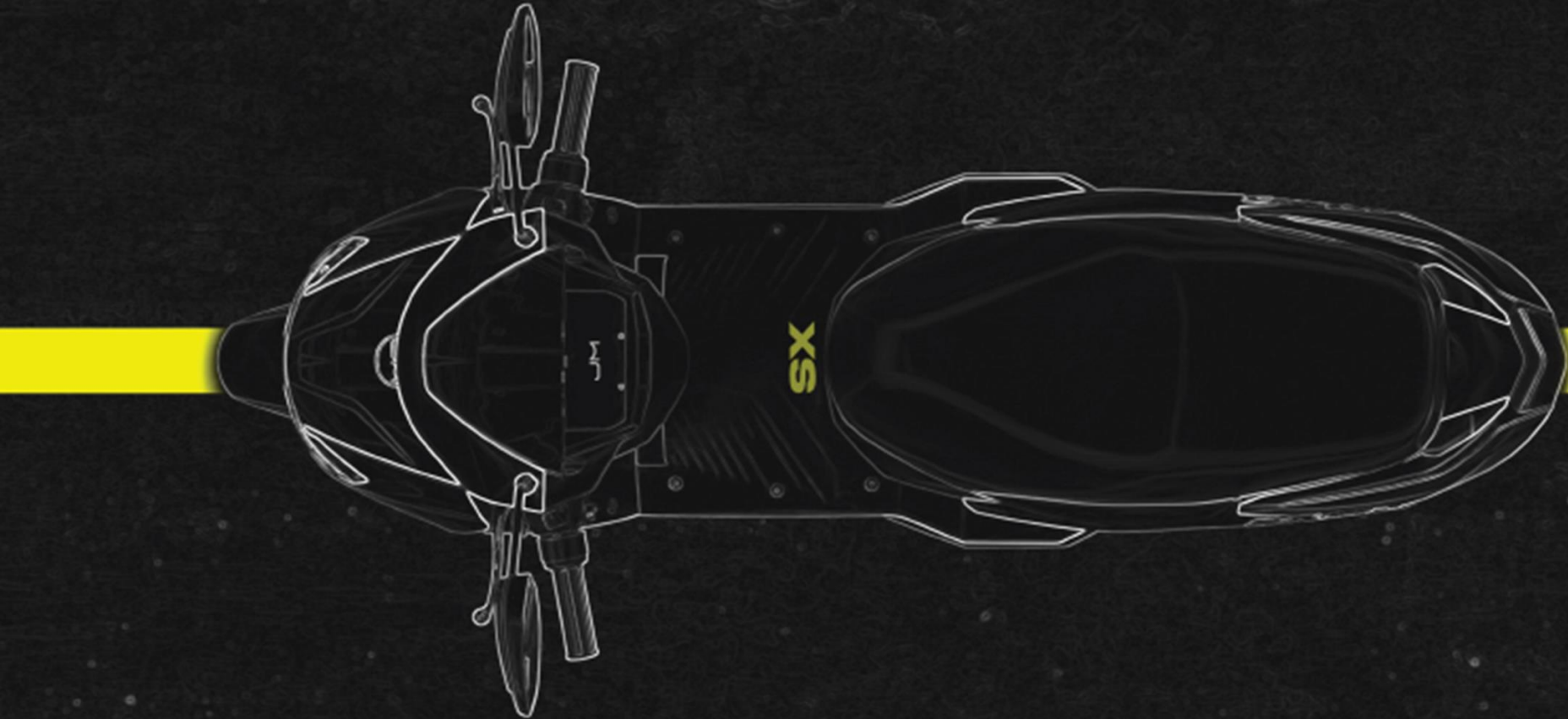
Exclusive Service Center  
**JM | Electric | Future**

PROPOSED FRONT VIEW OF  
THE SERVICE CENTRE





**THE FUTURE IS  
ELECTRIC**



**UN**

- Jindal Mobilitric is setting-up state-of-the-art Electric Vehicle Manufacturing Plant of 2.5 Lakh Vehicles Per Annum in Kheda, Gujarat.
- Company is also setting-up Fully Automated Battery Manufacturing Plant in Kheda, Gujarat.
- The Commercial production of the EV Project will start from April / May 2024.
- The objective of setting-up in-house battery plant is to ensure highest level of Battery Safety which builds consumers trust on EV Product resulting in faster adoption of EV in India and around the globe.
- Company aims to achieve \$1 Billion revenue in up-coming years after successful implementation of both Electric Vehicle Plant with Battery manufacturing plant.

# Thank You

---



Jindal House (JWL), Satellite, Ahmedabad, Gujarat-380015  
Telephone- +91 79 2573 5600 / 5700 / 5800 / 5900  
Mail- [info@jindalmobility.com](mailto:info@jindalmobility.com)  
[www.jindalmobility.com](http://www.jindalmobility.com)