

15<sup>th</sup> October, 2024

**National Stock Exchange of India Limited**

Exchange Plaza, 5<sup>th</sup> Floor,  
Plot No. C/1, G Block,  
Bandra Kurla Complex,  
Bandra (East), Mumbai - 400 051  
Fax: 022-26598237/38

**BSE Limited**

Corporate Relationship Department  
1<sup>st</sup> Floor, New Trading Ring,  
PJ Towers, Dalal Street,  
Fort, Mumbai - 400 001  
Fax: 022-22723121/1278

**Company Code: PVRINOX/532689**

**Sub: Second Quarter and Half Year for FY 25 – Investor Presentation**

Dear Sir / Madam,

Please find attached presentation on Investor update for 2<sup>nd</sup> quarter and half year ended on September 30, 2024 for the financial year 2024-25.

This is for your information and records.

Thanking You.

Yours faithfully,

**For PVR INOX Limited**

**Ajay Kumar Bijli**  
**Managing Director**

Encl: A/a



**PVR INOX**

OCTOBER 15<sup>th</sup>, 2024

**INVESTOR UPDATE**

**Q2 & H1 FY'25**

This presentation has been prepared for general information purposes in respect of PVR INOX Limited (“Company”) together with its subsidiaries and joint venture (together, with the “Company”, the “Group”) only, without regard to any specific objectives, suitability, financial situations and needs of any particular person and does not constitute any recommendation or form part of any offer or invitation, directly or indirectly, in any manner, or inducement to sell or issue, or any solicitation of any offer to purchase or subscribe for, any securities of the Company in any jurisdiction, nor shall it or any part of it or the fact of its distribution form the basis of, or be relied on in connection with, any contract or commitment therefor. This presentation does not solicit any action based on the material contained herein. Nothing in this presentation is intended by the Group to be construed as legal, accounting or tax advice.

This presentation has not been approved and will not or may not be reviewed or approved by any statutory or regulatory authority in India or by any Stock Exchange in India.

This presentation contains certain forward-looking statements relating to the business, financial performance, strategy and results of the Group and/ or the industry in which it operates. Forward-looking statements are statements concerning future circumstances and results, and any other statements that are not historical facts, sometimes identified by the words including, without limitation “believes”, “expects”, “predicts”, “intends”, “projects”, “plans”, “estimates”, “aims”, “foresees”, “anticipates”, “targets”, and similar expressions. The forward-looking statements, including those cited from third party sources, contained in this presentation are based on numerous assumptions and are uncertain and subject to risks. A multitude of factors including, but not limited to, changes in demand, competition and technology, can cause actual events, performance or results to differ significantly from any anticipated development. Neither the Group nor its affiliates or advisors or representatives nor any of its or their parent or subsidiary undertakings or any such person's officers or employees guarantees that the assumptions underlying such forward-looking statements are free from errors nor does either accept any responsibility for the future accuracy of the forward-looking statements contained in this presentation or the actual occurrence of the forecasted developments. Forward-looking statements speak only as of the date of this presentation and are not guarantees of future performance. As a result, the Group expressly disclaims any obligation or undertaking to release any update or revisions to any forward-looking statements in this presentation as a result of any change in expectations or any change in events, conditions, assumptions or circumstances on which these forward looking statements are based. Given these uncertainties and other factors, viewers of this presentation are cautioned not to place undue reliance on these forward-looking statements. Certain numbers in these presentations and materials have been subject to routine rounding off and accordingly figures shown as total in tables and diagrams may not be an arithmetic aggregation of the figures that precede them.

The information contained in these presentations and materials are only current as of the dates specified herein and have not been independently verified. None of the Group, its directors, promoters or affiliates, nor any of its or their respective employees, advisers or representatives or any other person accepts any responsibility or liability whatsoever, whether arising in tort, contract or otherwise, for any errors, omissions or inaccuracies in such information or opinions or for any loss, cost or damage suffered or incurred howsoever arising, directly or indirectly, from any use of this presentation or its contents or otherwise in connection with this presentation, and makes no representation or warranty, express or implied, for the contents of this presentation including its accuracy, fairness, completeness or verification or for any other statement made or purported to be made by any of them, or on behalf of them, and nothing in this presentation or at this presentation shall be relied upon as a promise or representation in this respect, whether as to the past or the future. Past performance is not a guide for future performance. The information contained in this presentation is current, and if not stated otherwise, made as of the date of this presentation. The Group undertakes no obligation to update or revise any information in this presentation as a result of new information, future events or otherwise. Any person/ party intending to provide finance/ invest in the shares/ businesses of the Group shall do so after seeking their own professional advice and after carrying out their own due diligence procedure to ensure that they are making an informed decision.

This presentation is not a prospectus, a statement in lieu of a prospectus, an offering circular, an advertisement or an offer document under the Companies Act, 2013, as amended, the Securities and Exchange Board of India (Issue of Capital and Disclosure Requirements) Regulations, 2018, as amended, or any other applicable law in India.

This presentation is strictly confidential and may not be copied or disseminated, reproduced, re-circulated, re-distributed, published or advertised in any media, website or otherwise, in whole or in part, and in any manner or for any purpose. Any unauthorized use, disclosure or public dissemination of information contained herein is prohibited. No person is authorized to give any information or to make any representation not contained in or inconsistent with this presentation and if given or made, such information or representation must not be relied upon as having been authorized by any person. Failure to comply with this restriction may constitute a violation of the applicable securities laws. Accordingly, any persons in possession of the aforesaid should inform themselves about and observe any such restrictions. By reviewing this presentation, you agree to be bound by the foregoing limitations. You may not repackage or sell the presentation. Information contained in a presentation hosted or promoted by the Group is provided “as is” without warranty of any kind, either expressed or implied, including any warranty of fitness for a particular purpose.

By accessing this presentation, you accept this disclaimer and any claims arising out of or in connection with this presentation shall be governed by the laws of India and only the courts in Gurugram, India, and no other courts shall have jurisdiction over the same.

<b>Particulars</b>	<b>Slide No.</b>
<b>Key Highlights</b>	<b>5</b>
<b>Box Office Update</b>	<b>7</b>
<b>Result Summary</b>	<b>11</b>
<b>Growth Update</b>	<b>17</b>
<b>Content Pipeline</b>	<b>19</b>

# Key Financial Highlights

(in INR Mn)

## TOTAL INCOME

## EBITDA & EBITDA MARGIN

## PAT

Q2, FY'25

Q2, FY'24

16,419

20,196

2,069 12.6%

4,473 22.1%

224

2,073

H1, FY'25

H1, FY'24

28,505

33,440

1,870 6.6%

5,476 16.4%

-1,142

1,633

Note: Above financial numbers are after excluding the impact of Ind AS 116 - 'Leases'

ADMITS (Mn)

ATP (INR)

SPH (INR)

Q2, FY'25

Q2, FY'24



H1, FY'25

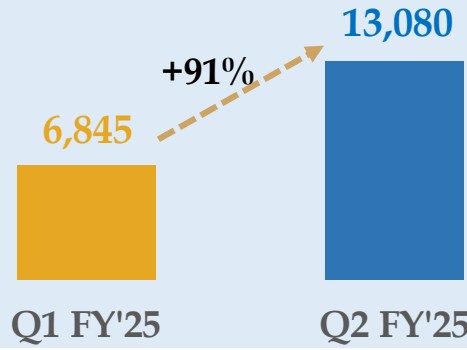
H1, FY'24



# Strong QoQ Bounceback in Box Office Collections

## India Gross Box Office in INR Mn <sup>(1)</sup>

HINDI



STREE 2

2,785 | 7,130



KALKI 2898 AD

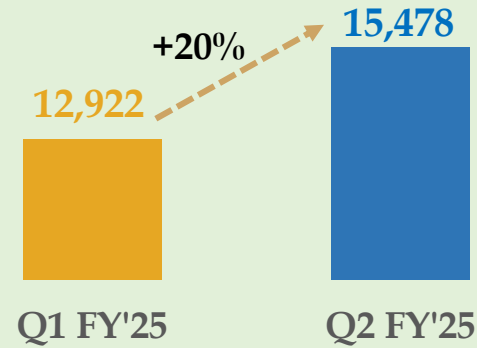
924 | 2,143



BAD NEWZ

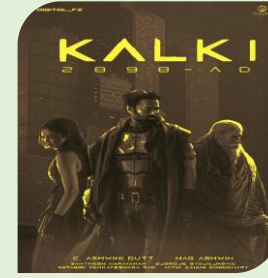
396 | 767

REGIONAL



G.O.A.T. (Tamil)

368 | 2,501



KALKI 2898 AD (Telugu)

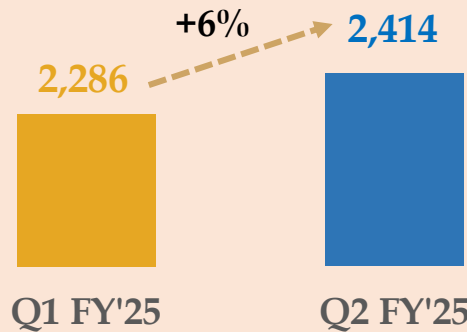
300 | 1,615



DEVARA (Telugu)

201 | 1,472

ENGLISH



DEADPOOL & WOLVERINE

863 | 1,601



DESPICABLE ME 4

DESPICABLE ME 4

147 | 214



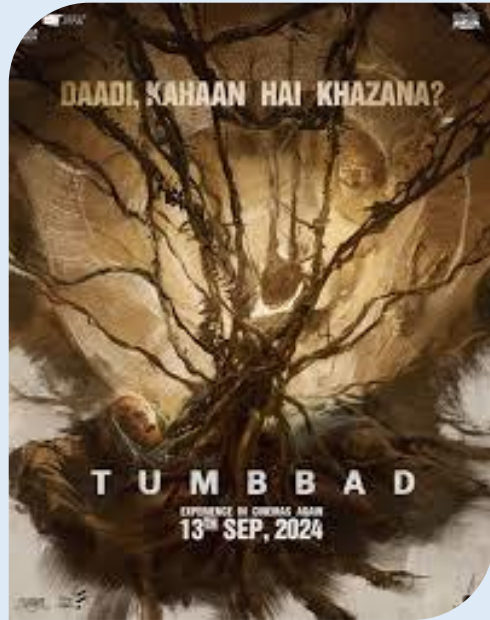
IT ENDS WITH US

101 | 135



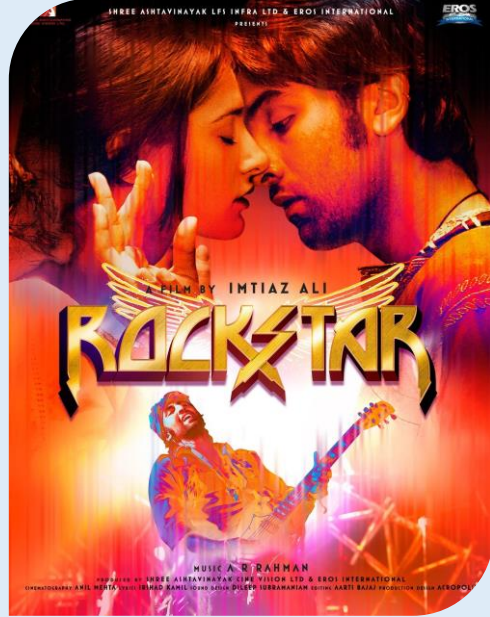
# Adding Another 'Superstar' to our line up - 'Re-releases'

## Top 3 Re-releases



Tumbbad (Hindi)

190 | 378



Rockstar (Hindi)

94 | 105

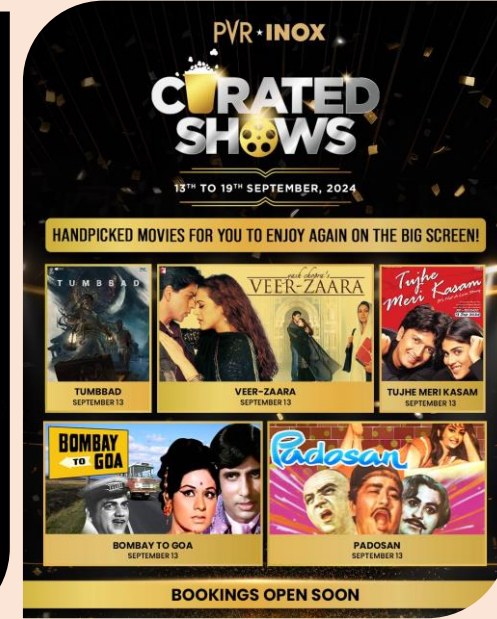


Laila Majnu (Hindi)

77 | 95

PVR INOX GBOC | India GBOC (INR Mn)

## Film Festivals / Curated Shows



- ❖ **Strong performance:** Re-released films contributed ~6% of Q2 admissions
- ❖ **Offers additional consumer choice:** Good Quality content is the key driver of cinema attendance.

Reaffirms the strong appetite of Indian audiences for cinematic experiences

# Bollywood Box Office gains momentum with 'Stree 2' ...

## Highest Grossing Hindi Movie of all time



STREE 2

## ...with a strong line up ahead



SINGHAM AGAIN



BHOOL BHULAIYA 3



BABY JOHN



CHAAVA



SKY FORCE



SIKANDAR

# Robust content line up for Regional and Hollywood



**PUSHPA 2**  
(Multilingual release – Telugu, Hindi, Tamil, Kannada, Malayalam)



**KANGUVA** (Multilingual)



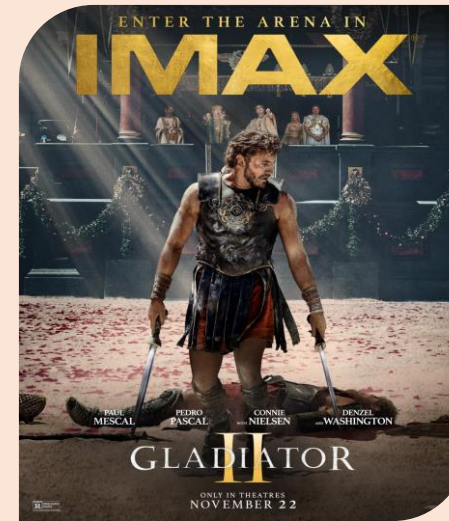
**GAME CHANGER** (Telugu)



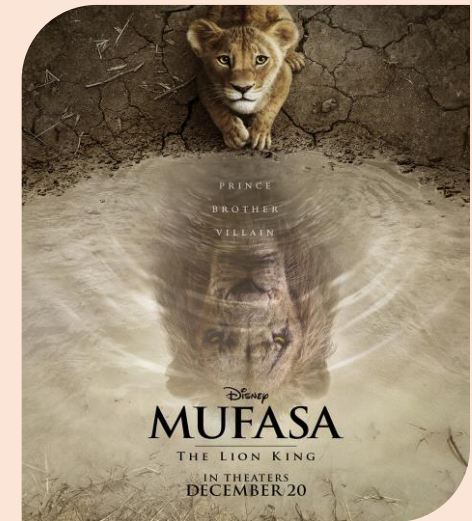
**VIDUTHALAI PART 2** (Tamil)



**VENOM : THE LAST DANCE**



**GLADIATOR 2**



**MUFASA : THE LION KING**

# Result Summary (Consolidated) - Q2, FY'25 vs Q2, FY'24

Particulars (INR Mn)	Q2, FY'25			Q2, FY'24		
	Reported	Ind-AS 116 Impact	Ind-AS 116 Adjusted	Reported	Ind-AS 116 Impact	Ind-AS 116 Adjusted
Total Income	16,639	220	16,419	20,237	41	20,196
Expenses	11,428	-2,922	14,350	12,931	-2,792	15,723
<b>EBITDA</b>	<b>5,211</b>	<b>3,142</b>	<b>2,069</b>	<b>7,306</b>	<b>2,833</b>	<b>4,473</b>
<b>EBITDA Margin</b>	<b>31.3%</b>		<b>12.6%</b>	<b>36.1%</b>		<b>22.1%</b>
Depreciation & Amortization	3,294	2,028	1,266	3,086	1,866	1,220
<b>EBIT</b>	<b>1,917</b>	<b>1,114</b>	<b>803</b>	<b>4,220</b>	<b>967</b>	<b>3,253</b>
Finance Costs	2,064	1,575	489	2,003	1,517	486
<b>PBT</b>	<b>-147</b>	<b>-461</b>	<b>314</b>	<b>2,217</b>	<b>-550</b>	<b>2,767</b>
Corporate Tax	-26	-116	90	555	-138	693
<b>PAT</b>	<b>-121</b>	<b>-345</b>	<b>224</b>	<b>1,662</b>	<b>-411</b>	<b>2,073</b>
<b>PAT Margin</b>	<b>-0.7%</b>		<b>1.4%</b>	<b>8.2%</b>		<b>10.3%</b>
EPS - Basic (INR)	-1.2		2.2	17.0		21.2
EPS - Diluted (INR)	-1.2		2.2	16.9		21.1

# Result Summary (Consolidated) - H1, FY'25 vs H1, FY'24

Particulars (INR Mn)	H1, FY'25			H1, FY'24		
	Reported	Ind-AS 116 Impact	Ind-AS 116 Adjusted	Reported	Ind-AS 116 Impact	Ind-AS 116 Adjusted
Total Income	28,833	328	28,505	33,535	95	33,440
Expenses	20,820	-5,815	26,635	22,455	-5,509	27,964
<b>EBITDA</b>	<b>8,013</b>	<b>6,143</b>	<b>1,870</b>	<b>11,080</b>	<b>5,604</b>	<b>5,476</b>
<b>EBITDA Margin</b>	<b>27.8%</b>		<b>6.6%</b>	<b>33.0%</b>		<b>16.4%</b>
Depreciation & Amortization	6,436	4,006	2,430	5,994	3,663	2,331
<b>EBIT</b>	<b>1,577</b>	<b>2,137</b>	<b>-560</b>	<b>5,086</b>	<b>1,941</b>	<b>3,145</b>
Finance Costs	4,105	3,165	940	3,948	2,998	950
<b>PBT</b>	<b>-2,528</b>	<b>-1,028</b>	<b>-1,500</b>	<b>1,138</b>	<b>-1,057</b>	<b>2,195</b>
Corporate Tax	-617	-259	-358	296	-266	562
<b>PAT</b>	<b>-1,911</b>	<b>-769</b>	<b>-1,142</b>	<b>842</b>	<b>-791</b>	<b>1,633</b>
<b>PAT Margin</b>	<b>-6.6%</b>		<b>-4.0%</b>	<b>2.5%</b>		<b>4.9%</b>
EPS - Basic (INR)	-19.4		-11.6	8.6		16.8
EPS - Diluted (INR)	-19.4		-11.6	8.6		16.6

# Key Operating Numbers

Particulars	Units	Q2, FY'25			Q2, FY'24			H1, FY'25			H1, FY'24		
		Reported (A)	Reported (B)	YoY Change (%) (A/B-1)	Reported (A)	Reported (B)	YoY Change (%) (A/B-1)	Reported (A)	Reported (B)	YoY Change (%) (A/B-1)	Reported (A)	Reported (B)	YoY Change (%) (A/B-1)
<b><u>Operating Numbers</u></b>													
Cinema Count (at the end of period) <sup>(1)</sup>		356	360	-1%	356	360	-1%	356	360	-1%	356	360	-1%
Screen Count (at the end of period) <sup>(1)</sup>		1,745	1,708	2%	1,745	1,708	2%	1,745	1,708	2%	1,745	1,708	2%
Weighted Average Screens <sup>(2)</sup>		1,708	1,666	2%	1,708	1,666	2%	1,705	1,656	3%	1,705	1,656	3%
Admits	Mns	38.8	48.4	-19.9%	38.8	48.4	-19.9%	69.2	82.3	-16.0%	69.2	82.3	-16.0%
Occupancy	%	25.7%	32.3%	-661 bps	25.7%	32.3%	-661 bps	23.0%	27.3%	-431 bps	23.0%	27.3%	-431 bps
Avg. Ticket Price (ATP)	INR	257	276	-6.7%	257	276	-6.7%	247	264	-6.1%	247	264	-6.1%
F&B Spend per Head (SPH)	INR	136	136	-0.1%	136	136	-0.1%	135	134	1.1%	135	134	1.1%

(1) Includes 42 management screens across 12 cinemas which are managed under a 'Management fee' model. The above table excludes Operating KPIs of management properties

(2) Weighted average screens has been calculated basis the actual no. of days of operations of each cinema during the period, excluding 42 management screens across 12 cinemas

Particulars (INR Mn)	Q2, FY'25			Q2, FY'24		
	Reported (A)	Reported (B)	YoY Change (%) (A/B-1)	Reported (A)	Reported (B)	YoY Change (%) (A/B-1)
Weighted Average Screens <sup>(1)</sup>	1,708	1,666	2%	1,705	1,656	3%
<b>Financials</b>						
Sale of Movie Tickets	8,376	11,193	-25.2%	14,311	18,138	-21.1%
Sale of Food & Beverages	5,232	6,412	-18.4%	9,250	10,689	-13.5%
Advertisement Income	1,093	1,176	-7.1%	2,027	2,069	-2.0%
Convenience Fees	650	685	-5.1%	1,088	1,217	-10.6%
Other Operating Income	870	533	63.2%	1,452	935	55.3%
Other Income	198	197	0.7%	377	392	-3.7%
<b>Total Income</b>	<b>16,419</b>	<b>20,196</b>	<b>-18.7%</b>	<b>28,505</b>	<b>33,440</b>	<b>-14.8%</b>

(1) Weighted average screens has been calculated basis the actual no. of days of operations of each cinema during the period, excluding 42 management screens across 12 cinemas

(2) Increase in Other operating income is due to increase on account of 'Income from Film Distribution from INR 358 mn in Q2 FY'24 to INR 603 mn in Q2 FY'25 for distributing Stree 2.

# Expense Analysis

Particulars (INR Mn)	Q2, FY'25			Q2, FY'24		
Weighted Average Screens <sup>(1)</sup>	1,708	1,666	2%	1,705	1,656	3%
<b>Variable Cost</b>	<i>Reported (A)</i>	<i>Reported (B)</i>	<i>YoY Change (%) (A/B-1)</i>	<i>Reported (A)</i>	<i>Reported (B)</i>	<i>YoY Change (%) (A/B-1)</i>
FHC (%)	44.9%	46.4%	-146 bps	44.4%	46.1%	-167 bps
COGS (%)	25.0%	23.7%	130 bps	24.8%	24.1%	70 bps
<b>Fixed Cost</b>						
Rent	3,128	3,129	0.0%	6,157	5,930	3.8%
CAM	909	836	8.7%	1,800	1,631	10.4%
Personnel	1,773	1,679	5.6%	3,416	3,238	5.5%
Electricity & Water / Utilities	1,092	1,117	-2.2%	2,158	2,175	-0.8%
Other Expenses ex Movie Dist., Print	1,884	1,907	-1.2%	3,663	3,541	3.4%
<b>Total Fixed Expenses ex Movie Dist.</b>	<b>8,786</b>	<b>8,668</b>	<b>1.4%</b>	<b>17,194</b>	<b>16,515</b>	<b>4.1%</b>
Movie Dist., Print charges <sup>(2)</sup>	977	557	75.4%	1,398	900	55.3%
<b>Total Fixed Expenses incl. Movie Dist.</b>	<b>9,763</b>	<b>9,225</b>	<b>5.8%</b>	<b>18,592</b>	<b>17,415</b>	<b>6.8%</b>

(1) Weighted average screens has been calculated basis the actual no. of days of operations of each cinema during the period, excluding 42 management screens across 12 cinemas

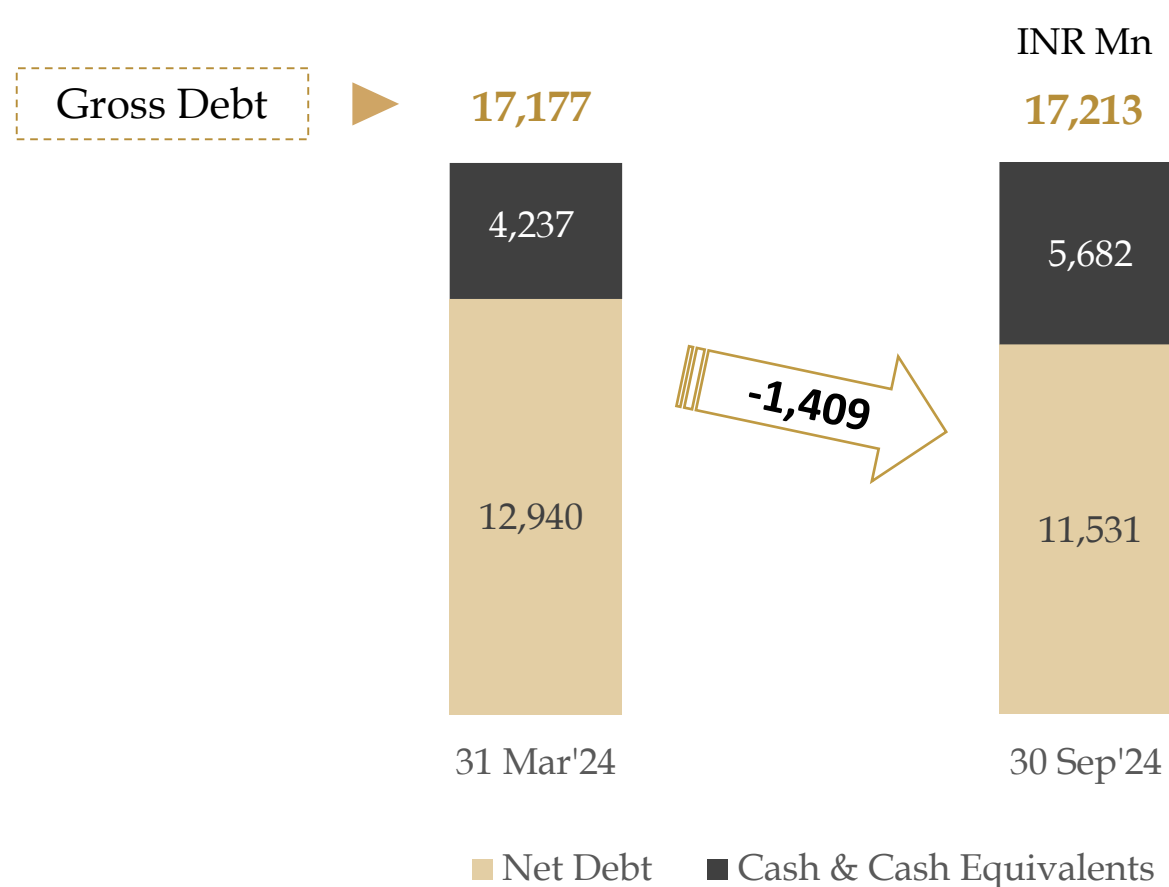
(2) Expenses relating to Distribution of movies



# Balance Sheet

Particulars (INR Mn)	Consolidated	
	September 30, 2024	March 31, 2024
<b>Total Shareholder funds</b>	<b>71,401</b>	<b>73,232</b>
Equity Share Capital	982	981
Other Equity	70,399	72,254
Non-Controlling Interest	20	-3
<b>Total Debt</b>	<b>17,213</b>	<b>17,177</b>
Long Term Borrowings	10,595	10,474
Short Term Borrowings	6,618	6,703
Lease Liability	66,087	65,858
Other Non Current Liabilities	1,526	930
<b>Total Sources of Funds</b>	<b>1,56,227</b>	<b>1,57,197</b>
Net Fixed Assets Incl. CWIP	34,042	34,897
Goodwill	57,431	57,431
Right of Use assets (ROU)	54,098	54,917
Other Non Current Assets	11,889	11,010
Cash & Cash Equivalents <sup>(1)</sup>	5,682	4,237
Current Assets	5,380	5,712
Less: Current Liabilities	12,295	11,007
Net Current Assets	-6,915	-5,295
<b>Total Assets</b>	<b>1,56,227</b>	<b>1,57,197</b>

(1) Includes Investments, Other Bank balances and Bank deposits (under 'Other Financials Assets')



**Reduced Net Debt by INR 1,409 mn in H1 FY'25**

Q1

#	Cinemas Opened	Opening Date	Screens
1.	PVR Forum Mall, Kochi	10-Apr-24	9
2.	INOX Phoenix Market City, Bengaluru (Mall of Asia)	11-Apr-24	14
3.	PVR KOPA, Koregaon Park, Pune	8-May-24	7
4.	PVR Ambience Gurgaon (Experience Zone) <sup>(1)</sup>	9-May-24	4
5.	INOX Urban Square Udaipur	30-May-24	6
6.	PVR Machlipatnam, Andhra Pradesh	31-May-24	3
7.	PVR LIDO Mumbai	31-May-24	3
8.	INOX Prism, Hyderabad	27-Jun-24	4
<b>New Screens Opened in Q1</b>			<b>50</b>

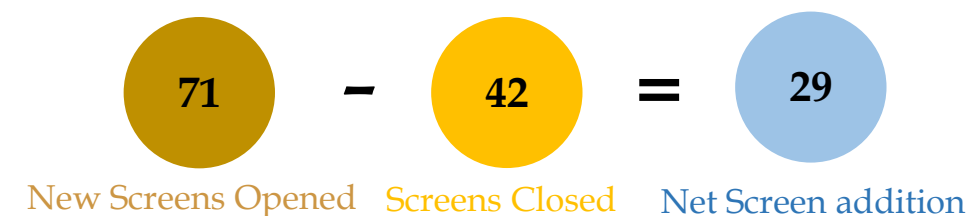
(1) 4 screens were added to our existing cinema in Ambience Mall, Gurgaon

Q2

#	Cinemas Opened	Opening Date	Screens
9.	PVR Palladium, Ahmedabad	1-Aug-24	9
10.	PVR PP Mall, Mohali	6-Sep-24	7
<b>New Screens Opened in Q2</b> <sup>(2)</sup>			<b>16</b>

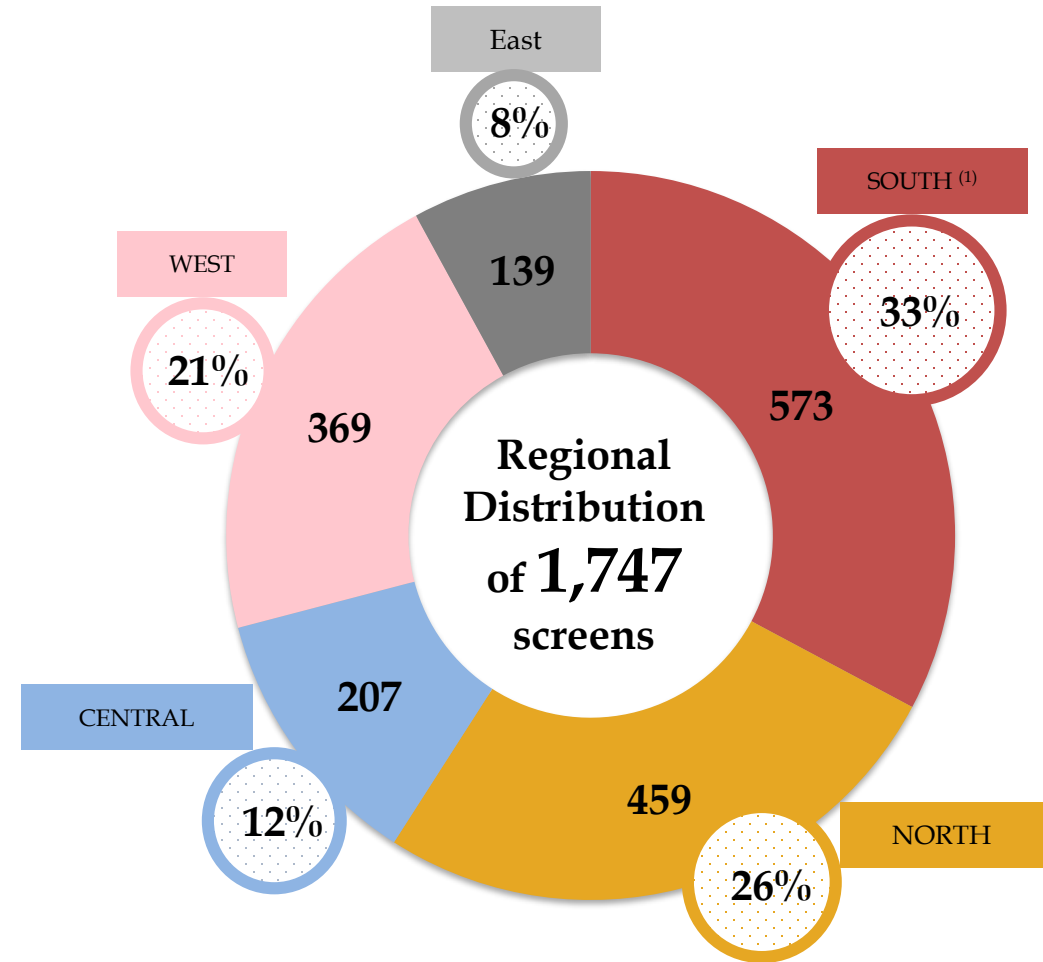
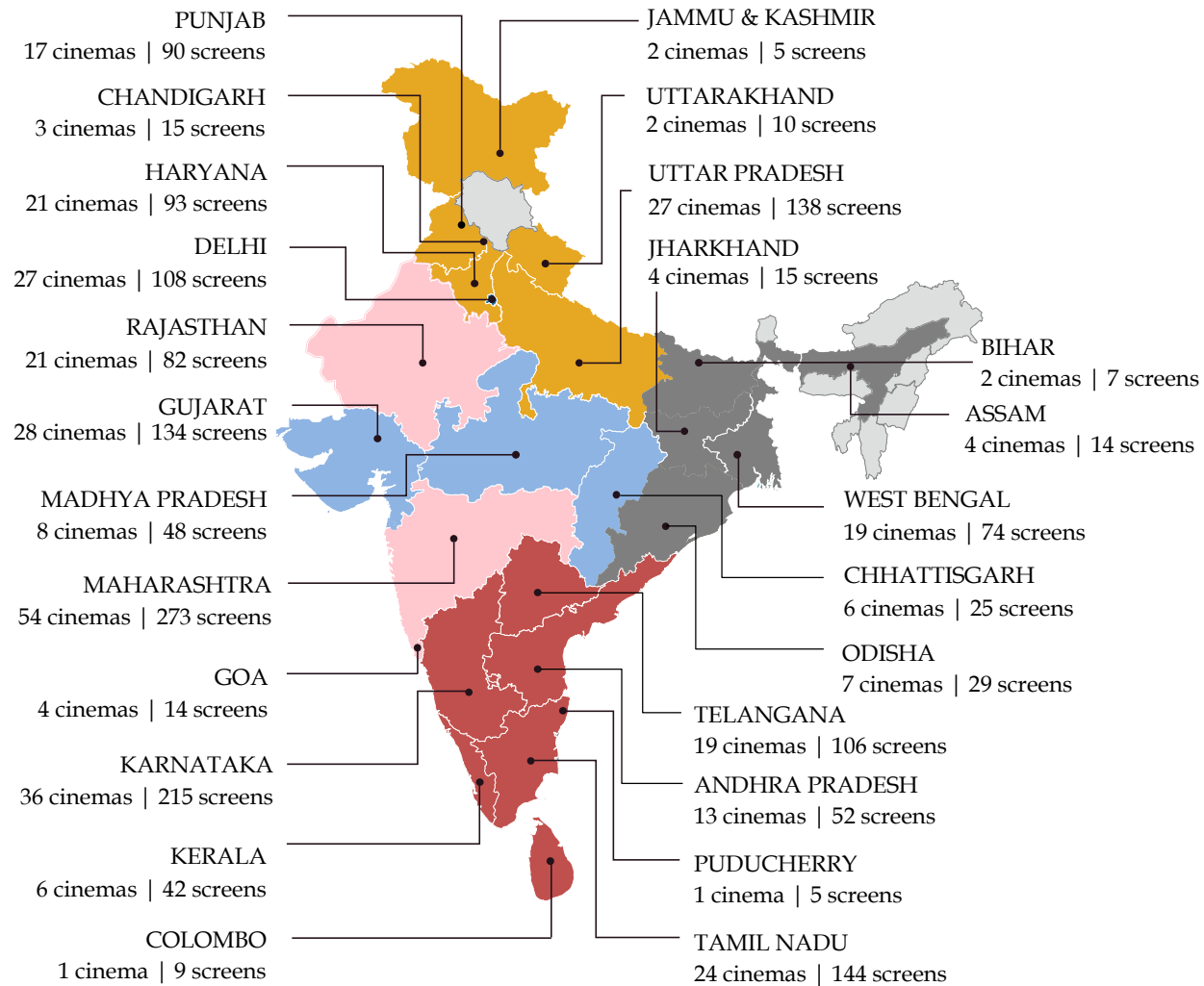
(2) PVR Alveal Coimbatore (5 screens) was opened on 2<sup>nd</sup> October (Q3 FY'25)

## YTD FY'25



**Expect to open 110-120 new screens in FY'25. Net screen addition of ~50 screens**

# Diversified Screen Network of 1,747 Screens across 111 Cities



Note : Includes 12 Management Properties with 42 screens  
Map not to scale, Screen Portfolio as on date

(1) South includes Sri Lanka



# CONTENT LINEUP



## BOUGAINVILLEA

**CAST**  
FAHADH FAASIL,  
KUNCHACKO  
BOBAN

**DIRECTOR**  
AMAL NEERAD

**MALAYALAM**

**17<sup>TH</sup> OCT'2024**



## SMILE 2

**CAST**  
NAOMI SCOTT,  
ROSEMARIE DEWITT,  
KYLE GALLNER,  
LUKAS GAGE

**DIRECTOR**  
PARKER FINN

**ENGLISH**

**18<sup>TH</sup> OCT'2024**



## THE WILD ROBOT

**CAST**  
LUPITA NYONG'O,  
PEDRO PASCAL,  
KIT CONNOR

**DIRECTOR**  
CHRIS SANDERS

**ENGLISH**

**18<sup>TH</sup> OCT'2024**



## TABAAH

**CAST**  
PARMISH VERMA,  
WAMIQA GABBI

**DIRECTOR**  
PARMISH VERMA

**PUNJABI**

**18<sup>TH</sup> OCT'2024**



## VENOM: THE LAST DANCE - IMAX

**CAST**  
TOM HARDY

**DIRECTOR**  
KELLY MARCEL

**ENGLISH**

**25<sup>TH</sup> OCT'2024**



## LUCKY BASKHAR

**CAST**  
DULQUER SALMAAN,  
MAGANTI SRINATH,  
MEENAAKSHI  
CHAUDHARY

**DIRECTOR**  
VENKY ATLURI

**MALAYALAM,  
TELUGU, TAMIL,  
HINDI**

**31<sup>ST</sup> OCT'2024**



## BHOO BHULAIYAA 3

**CAST**  
KARTIK ARYAN,  
VIDYA BALAN,  
TRIPTI DIMRI

**DIRECTOR**  
ANEES BAZMEE

**HINDI**

**1<sup>ST</sup> NOV'2024**



## SINGHAM AGAIN

**CAST**  
AJAY DEVGN,  
KAREENA KAPOOR  
KHAN,  
RANVEER SINGH

**DIRECTOR**  
ROHIT SHETTY

**HINDI**

**1<sup>ST</sup> NOV'2024**

The latest content lineup can also be accessed at : <https://www.pvrcinemas.com/coming-soon-movie-calender>



## KANGUVA

**CAST**  
SURIYA,  
BOBBY DEOL,  
DISHA PATANI

**DIRECTOR**  
SIVA

TAMIL, TELUGU,  
HINDI, KANNADA,  
MALAYALAM

**14<sup>TH</sup> NOV'2024**



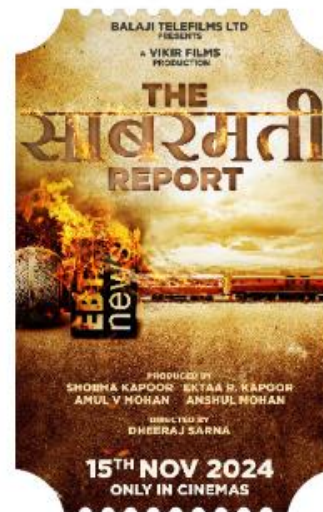
## GLADIATOR 2 - IMAX, ICE

**CAST**  
PAUL MESCAL,  
DENZEL  
WASHINGTON,  
CONNIE NIELSEN,  
DEREK JACOBI

**DIRECTOR**  
RIDLEY SCOTT

ENGLISH

**15<sup>TH</sup> NOV'2024**



## THE SABARMATI REPORT

**CAST**  
VIKRANT MASSEY,  
RAASHI KHANNA,  
RIDHI DOGRA

**DIRECTOR**  
RANJAN CHANDEL

HINDI

**15<sup>TH</sup> NOV'2024**



## DHADAK 2

**CAST**  
SIDDHANT  
CHATURVEDI,  
TRIPTI DIMRI

**DIRECTOR**  
SHAZIA IQBAL

HINDI

**22<sup>ND</sup> NOV'2024**



## MOANA 2

**CAST**  
DWAYNE JOHNSON

**DIRECTOR**  
THOMAS KAIL

ENGLISH

**29<sup>TH</sup> NOV'2024**



## PUSHPA 2: THE RULE

**CAST**  
ALLU ARJUN,  
RASHMIKA  
MANDANNA

**DIRECTOR**  
SUKUMAR

TELUGU, HINDI,  
TAMIL, KANNADA,  
MALAYALAM

**6<sup>TH</sup> DEC'2024**



## LORD OF THE RINGS: THE WAR OF ROHIRRIM- IMAX, ICE

**CAST**  
BRIAN COX,  
MIRANDA OTTO

**DIRECTOR**  
KENJI KAMIYAMA

ENGLISH

**13<sup>TH</sup> DEC'2024**



## KRAVEN THE HUNTER

**CAST**  
AARON TAYLOR -  
JOHNSON,  
ARIANA DEBOSE,  
RUSSELL CROWE

**DIRECTOR**  
J.C CHANDOR

ENGLISH, HINDI,  
TAMIL, TELUGU

**13<sup>TH</sup> DEC'2024**

The latest content lineup can also be accessed at : <https://www.pvrcinemas.com/coming-soon-movie-calender>



**MUFASA: THE LION KING - IMAX, ICE**

**CAST**  
SETH ROGEN, BILLY EICHNER, KELVIN HARRISON JR

**DIRECTOR**  
BARRY JENKINS

**ENGLISH**

**20TH DEC'2024**



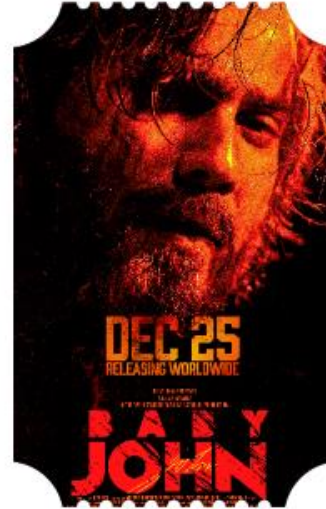
**VIDUTHALAI PART 2**

**CAST**  
VIJAY SETHUPATHI, SOORI, BHAVANI SRE

**DIRECTOR**  
VETRIMAARAN

**TAMIL**

**20TH DEC'2024**



**BABY JOHN**

**CAST**  
VARUN DHAWAN, KEERTHY SURESH, WAMIQA GABBI

**DIRECTOR**  
KALEES

**HINDI**

**25TH DEC'2024**



**GAME CHANGER**

**CAST**  
RAM CHARAN, KIARA ADVANI, SAMUTHIRAKANI

**DIRECTOR**  
SHANKAR SHANMGHAM

**TELUGU**

**10TH JAN'2025**



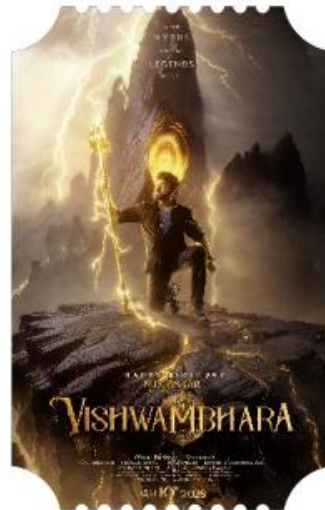
**DEN OF THIEVES 2: PANTERA**

**CAST**  
GERARD BUTLER, O'SHEA JACKSON JR, 50 CENT

**DIRECTOR**  
CHRISTIAN GUDEGAST

**ENGLISH**

**10TH JAN'2025**



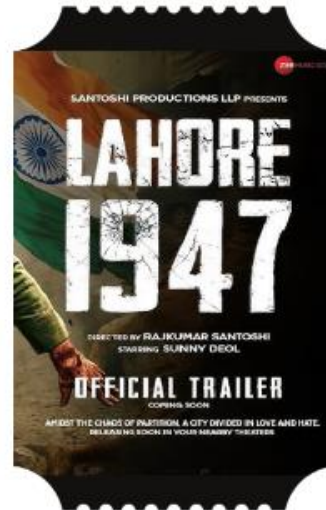
**VISHWAMBHARA**

**CAST**  
CHIRANJEEVI, TRISHA

**DIRECTOR**  
MALLIDI VASSISTHA

**TELUGU**

**10TH JAN'2025**



**LAHORE 1947**

**CAST**  
SUNNY DEOL, PREITY ZINTA, ALI FAZAL

**DIRECTOR**  
RAJKUMAR SANTOSHI

**HINDI**

**24TH JAN'2025**



**FLIGHT RISK**

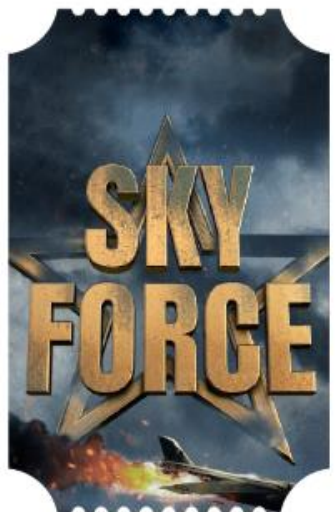
**CAST**  
MARK WAHLBERG, TOPHER GRACE, MICHELLE DOCKERY

**DIRECTOR**  
MEL GIBSON

**ENGLISH**

**24TH JAN'2025**

The latest content lineup can also be accessed at : <https://www.pvrcinemas.com/coming-soon-movie-calender>



## SKY FORCE

**CAST**  
AKSHAY KUMAR,  
VEER PAHARIYA

**DIRECTOR**  
SANDEEP KEWLANI,  
ABHISHEK ANIL  
KAPUR

**HINDI**

**24<sup>TH</sup> JAN'2025**



## CAPTAIN AMERICA: BRAVE NEW WORLD

**CAST**  
HARRISON FORD,  
TIM BLAKE NELSON

**DIRECTOR**  
JULIUS ONAH

**ENGLISH**

**14<sup>TH</sup> FEB'2025**



## DEVA

**CAST**  
SHAHID KAPOOR,  
POOJA HEGDE

**DIRECTOR**  
ROSSHAN ANDRREWS

**HINDI**

**14<sup>TH</sup> FEB'2025**



## RAID 2

**CAST**  
AJAY DEVGN,  
VAANI KAPOOR

**DIRECTOR**  
RAJKUMAR GUPTA

**HINDI**

**21<sup>ST</sup> FEB'2025**



## NIKKA ZAILDAR 4

**CAST**  
AMMY VIRK,  
SONAM BAJWA

**DIRECTOR**  
SIMERJIT SINGH

**PUNJABI**

**7<sup>TH</sup> MAR'2025**



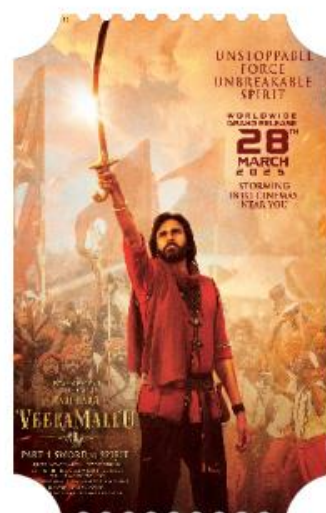
## SIKANDAR

**CAST**  
SALMAN KHAN,  
RASHMIKA  
MANDANNA

**DIRECTOR**  
A R MURUGADOSS

**HINDI**

**28<sup>TH</sup> MAR'2025**



## HARI HARI VEERA MALLU PART 1 - SWORD AND SPIRIT

**CAST**  
PAWAN KALYAN,  
BOBBY DEOL,  
NIDHI AGERWAL

**DIRECTOR**  
KRISH JAGARLAMUDI,  
A.M. JYOTHI KRISHNA

**TELUGU**

**28<sup>TH</sup> MAR'2025**



## VD 12

**CAST**  
VIJAY DEVERAKONDA,  
RUKMINI VASANTH,  
BHAGYASHRI BORSE

**DIRECTOR**  
GOWTAM TINNANURI

**TELUGU**

**28<sup>TH</sup> MAR'2025**

The latest content lineup can also be accessed at : <https://www.pvrcinemas.com/coming-soon-movie-calender>



A dimly lit cinema lobby with a bar and seating area. The bar has signs for 'CHAAT' and 'POPCORNI'. The floor has a black and white zigzag pattern. There are red armchairs and a long red sofa. The ceiling has a grid pattern and several chandeliers. The text 'PVR INOX' is in orange and 'THANK YOU' is in white with a gold outline.

**PVR INOX**  
**THANK YOU**