

TEL : +91-40-27898206 / 27892071
 FAX : +91-40-27816171
 E-MAIL : infohyd@balajiamines.com
 unit2mktg@balajiamines.com
 WEBSITE : www.balajiamines.com

Balaji



CIN : L24132MH1988PLC049387

AMINES LTD.

Admn. Off :
 3rd FLOOR, K.P.R. HOUSE, S.P. ROAD,
 SECUNDERABAD - 500 003. (INDIA)

BALAJI AMINES LIMITED

(An ISO 9001:2008 Company)

CIN : L24132MH1988PLC049387

Regd. Office : - "Balaji Towers", 9/1A/1, Hotgi Road Aasara Chowk, SOLAPUR - 413 224

UNAUDITED FINANCIAL RESULTS FOR THE QUARTER & NINE MONTHS ENDED DECEMBER 31, 2014

Rs. in Crores

Particulars	3 months ended (31.12.2014)	Preceding 3 months ended (30.09.2014)	Corresponding 3 months ended (31.12.2013) in the previous year	Year to date figures for current period ended (31.12.2014)	Year to date figures for the previous year ended (31.12.2013)	Previous year ended (31.03.2014)
	(Unaudited)	(Unaudited)	(Unaudited)	(Unaudited)	(Unaudited)	(Audited)
1 Income from operations						
(a) Net sales/income from operations (Net of excise duty)	141.67	150.45	137.51	456.59	438.63	610.13
(b) Other operating income	0.00	0.00	0.00	0.00	0.00	0.00
Total income from operations (net)	141.67	150.45	137.51	456.59	438.63	610.13
2 Expenses						
(a) Cost of materials consumed	90.00	80.40	100.15	273.68	298.97	403.42
(b) Changes in inventories of finished goods & work-in-progress	-5.50	4.91	-14.51	-2.67	-27.15	-22.45
(c) Employee benefits expense	6.16	5.54	5.29	17.41	14.51	20.78
(d) Depreciation	4.98	4.93	4.50	14.81	12.05	16.46
(e) Other expenses	30.69	31.43	27.14	94.72	82.41	117.36
Total expenses	126.32	127.21	122.58	397.94	380.79	535.57
3 Profit / (Loss) from operations before other income, finance costs and exceptional items (1-2)						
	15.35	23.24	14.94	58.65	57.84	74.56
4 Other income						
	0.52	0.85	0.54	2.15	2.06	2.60

Regd. Office : "Balaji Towers", No. 9/1A/1, Hotgi Road, Aasara Chowk, Solapur - 413 003.

■ Fax : (0217) 2451521, Phones : (0217) 2451523, 2451524, E-mail : info@balajiamines.com

Unit II Works : Beside APSEB Sub Station II, IDA, Bollaram - 502 325, Jinnaram Mandal, Medak Dist. Telangana

■ Phones : 08458-329660, Telefax : 08458-279240, E-mail : works2@balajiamines.com





TEL : +91-40-27898206 / 27892071
 FAX : +91-40-27816171
 E-MAIL : infohyd@balajiamines.com
 unit2mktg@balajiamines.com
 WEBSITE : www.balajiamines.com

Balaji



CIN : L24132MH1988PLC049387

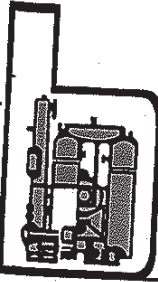
AMINES LTD.

Admn. Off :
 3rd FLOOR, K.P.R. HOUSE, S.P. ROAD,
 SECUNDERABAD - 500 003. (INDIA)

5	Profit / (Loss) from ordinary activities before finance costs and exceptional items (3 + 4)	15.87	24.09	15.48	60.80	59.90	77.16
6	Finance costs	7.66	7.94	8.70	23.96	23.18	31.51
7	Profit / (Loss) from ordinary activities after finance costs but before exceptional items (5 - 6)	8.21	16.15	6.78	36.84	36.72	45.65
8	Exceptional items	0.00	0.00	0.00	0.00	0.00	0.00
9	Profit / (Loss) from ordinary activities before tax						
	(7 + 8)	8.21	16.15	6.78	36.84	36.72	45.65
10	Tax expense	2.02	5.81	2.58	12.25	12.28	12.12
11	Net Profit / (Loss) from ordinary activities after tax (9 - 10)	6.19	10.34	4.20	24.59	24.44	33.53
12	Extraordinary items (net of tax expense)		1.25	0.00	0.00	0.00	0.00
13	Net Profit / (Loss) for the period (11 + 12)	6.19	9.09	4.20	24.59	24.44	33.53
14	Paid-up equity share capital (Face Value of each Share Rs. 2/-)	6.48	6.48	6.48	6.48	6.48	6.48
15	Reserve excluding Revaluation Reserves as per balance sheet of previous accounting year	195.76	195.76	166.00	195.76	166.00	166.00
16 i	Earnings per share (before extraordinary items) (of Rs 2/- each) (not annualised):						
	(a) Basic	1.91	2.80	1.30	7.59	7.54	10.35
	(b) Diluted	1.91	2.80	1.30	7.59	7.54	10.35
16 ii	Earnings per share (after extraordinary items) (of Rs 2/- each) (not annualised):						
	(a) Basic	1.91	2.80	1.30	7.59	7.54	10.35
	(b) Diluted	1.91	2.80	1.30	7.59	7.54	10.35

Regd. Office : "Balaji Towers", No. 9/1A/1, Hotgi Road, Aasara Chowk, Solapur - 413 003
 Fax : (0217) 2451521, Phones : (0217) 2451523, 2451524, E-mail : info@balajiamines.com
 Unit II Works : Beside APSEB Sub Station II, IDA, Bollaram - 502 325, Jinnaram Mandal, Medak Dist. Telangana
 Phones : 08458-329660, Telefax : 08458-279240, E-mail : works2@balajiamines.com





TEL : +91-40-27898206 / 27892071
 FAX : +91-40-27816171
 E-MAIL : infohyd@balajiamines.com
 unit2mktg@balajiamines.com
 WEBSITE : www.balajiamines.com

Balaji



CIN : L24132MH1988PLCO49387

AMINES LTD.

Admn. Off :
 3rd FLOOR, K.P.R. HOUSE, S.P. ROAD,
 SECUNDERABAD - 500 003. (INDIA)

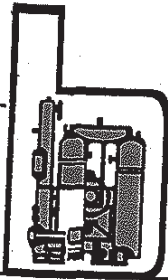
PART II SELECTED INFORMATION FOR THE QUARTER AND NINE MONTHS ENDED 31ST DECEMBER 2014

	3 Months ended	Preceding 3 Months ended	Corresponding 3 months ended in the previous year	Year to date figures for current period ended	Year to date figures for the previous year ended	Previous Financial Year
	31.12.2014	30.09.2014	31.12.2013	31.12.2014	31.12.2013	31.03.2014
A PARTICULARS OF SHAREHOLDING						
1 Public shareholding						
- Number of shares	14794918	14794918	14794918	14794918	14794918	14794918
- Percentage of shareholding	45.66	45.66	45.66	45.66	45.66	45.66
Promoters and Promoter Group	17606082	17606082	17606082	17606082	17606082	17606082
2 Shareholding **						
a) Pledged / Encumbered						
Number of shares	6732000	6732000	6732000	6732000	6732000	6732000
Percentage of shares (as a % of the total shareholding of promoter and promoter group)	38.24	38.24	38.24	38.24	38.24	38.24
Percentage of shares (as a % of the total share capital of the company)	20.78	20.78	20.78	20.78	20.78	20.78
b) Non - encumbered						
Number of shares	10874082	10874082	10874082	10874082	10874082	10874082
Percentage of shares (as a % of the total shareholding of the Promoter and Promoter group)	61.76	61.76	61.76	61.76	61.76	61.76
Percentage of shares (as a % of the total share capital of the company)	33.56	33.56	33.56	33.56	33.56	33.56

Particulars	3 months ended 31.12.2014
B INVESTOR COMPLAINTS	
Pending at the beginning of the quarter	Nil
Received during the quarter	1
Disposed of during the quarter	1
Remaining unresolved at the end of the quarter	Nil

Regd. Office : "Balaji Towers", No. 9/1A/1, Hotgi Road, Aasara Chowk, Solapur - 413 001
 ■ Fax : (0217) 2451521, Phones : (0217) 2451523, 2451524, E-mail : info@balajiamines.com
 Unit II Works : Beside APSEB Sub Station II, IDA, Bollaram - 502 325, Jinnaram Mandal, Medak Dist. Telangana
 ■ Phones : 08458-329660, Telefax : 08458-279240, E-mail : works2@balajiamines.com





TEL : +91-40-27898206 / 27892071
 FAX : +91-40-27816171
 E-MAIL : infohyd@balajiamines.com
 unit2mktg@balajiamines.com
 WEBSITE : www.balajiamines.com

Balaji



CIN : L24132MH1988PLCO49387

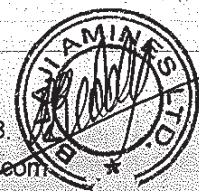
AMINES LTD.

Admn. Off :
 3rd FLOOR, K.P.R. HOUSE, S.P. ROAD,
 SECUNDERABAD - 500 003. (INDIA)

Balaji Amines Limited
 Segment Information

(Rs. In Crores)

Sl. No.	Particulars	3 months ended (31.12.2014)	Preceding 3 months ended (30.09.2014)	Year to date figures for current period ended (31.12.2014)	Year to date figures for current period ended (31.12.2013)	Previous Financial Year Ended 31.03.2014
		(Unaudited)	(Unaudited)	(Unaudited)	(Unaudited)	(Audited)
1	Segment Revenue					
	Amines Division	138.88	148.03	448.90	437.07	606.18
	Hotel Division	2.87	2.44	7.83	1.59	4.01
	Sub Total :	141.75	150.47	456.73	438.66	610.19
	Less: Inter-segment revenue	0.08	0.02	0.14	0.03	0.06
	Net revenue from operations	141.67	150.45	456.59	438.63	610.13
2	Segment Results before Depreciation, Interest & Tax					
	Amines Division	20.19	28.87	74.84	71.88	93.43
	Hotel Division	0.66	0.15	0.77	0.07	0.18
	Total :	20.85	29.02	75.61	71.95	93.61
3	Depreciation					
	Amines Division	3.92	3.88	11.66	11.42	14.74
	Hotel Division	1.06	1.05	3.15	0.63	1.72
	Total :	4.98	4.93	14.81	12.05	16.46
4	Interest					
	Amines Division	6.78	7.01	21.19	22.51	29.85
	Hotel Division	0.88	0.93	2.77	0.67	1.66
	Total :	7.66	7.94	23.96	23.18	31.51
5	Segment Profit/Loss (-) before tax					
	Amines Division	9.48	17.99	41.99	37.95	48.84
	Hotel Division	-1.27	-1.84	-5.15	-1.23	-3.20
	Total :	8.21	16.15	36.84	36.72	45.64
6	Tax Expenses					
	Amines Division	0.64	3.25	7.27	8.94	12.12
	Hotel Division	1.38	3.81	4.98	3.33	0.00
7	Profit/Loss (-) after tax	6.19	9.09	24.59	24.45	33.52



Regd. Office : "Balaji Towers", No. 9/1A/1, Hotgi Road, Aasara Chowk, Solapur - 413 003
 Fax : (0217) 2451521, Phones : (0217) 2451523, 2451524, E-mail : info@balajiamines.com
 Unit II Works : Beside APSEB Sub Station II, IDA, Bollaram - 502 325, Jinnaram Mandal, Medak Dist. Telangana
 Phones : 08458-329660, Telefax : 08458-279240, E-mail : works2@balajiamines.com



TEL : +91-40-27898206 / 27892071
FAX : +91-40-27816171
E-MAIL : infohyd@balajiamines.com
unit2mktg@balajiamines.com
WEBSITE : www.balajiamines.com

Balaji



CIN : L24132MH1988PLC049387

AMINES LTD.

Admn. Off :
3rd FLOOR, K.P.R. HOUSE, S.P. ROAD,
SECUNDERABAD - 500 003. (INDIA)

8	Segment Assets					
	Amines Division	537.93	501.85	537.93	479.94	516.22
	Hotel Division	103.86	104.13	103.86	103.62	105.13
	Total :	641.80	605.98	641.80	583.56	621.35
9	Segment Liabilities					
	Amines Division	367.42	338.36	367.42	353.97	385.99
	Hotel Division	46.23	46.00	46.23	32.99	33.12
	Total :	413.65	384.36	413.65	386.96	419.11
10	Segment Assets acquired during the year					
	Amines Division	0.80	0.40	5.54	9.94	5.79
	Hotel Division	0.38	0.30	1.08	103.62	102.03
	Total :	1.18	0.70	6.62	113.56	107.82
11	Capital Work in Progress					
	Amines Division	8.55	8.43	8.55	2.55	8.12
	Total :	8.55	8.43	8.55	2.55	8.12

Notes:

1. The above unaudited results have been reviewed by the audit committee and taken on record by the Board of Directors at their meeting held on 14-02-2015.
2. The Limited Review by the Statutory Auditors for the quarter and Nine months as required under clause 41 of the Listing Agreement has been completed and the related Report is being forwarded to stock Exchanges.
3. Corresponding figures in previous year have been regrouped wherever considered necessary.
4. Segment wise reporting as applicable under AS-17 for the quarter and Nine months ended 31st December 2014, given separately.

*The Shares are pledged in favour of Banks to Secure various credit facilities to the company

Date: 14/02/2015
Place : Secunderabad

By order of Board
for Balaji Amines Limited

A Prathap Reddy
Chairman & Managing Director

Regd. Office : "Balaji Towers", No. 9/1A/1, Hotgi Road, Aasara Chowk, Solapur - 413 003.

■ Fax : (0217) 2451521, Phones : (0217) 2451523, 2451524, E-mail : info@balajiamines.com

Unit II Works : Beside APSEB Sub Station II, IDA, Bollaram - 502 325, Jinnaram Mandal, Medak Dist. Telangana.

■ Phones : 08458-329660, Telefax : 08458-279240, E-mail : works2@balajiamines.com