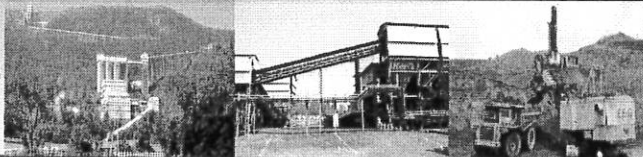


Q4 and
FY 2014-15
Performance



NMDC Limited

Corporate Investors Presentation on Q4 and FY 2014-15 Performance

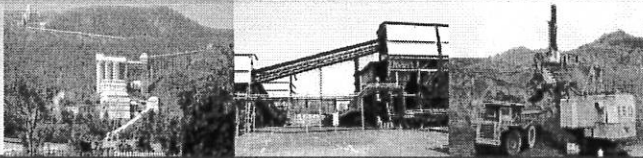
Disclaimer

Cautionary Statement

The statements contained in the Presentation may be forward looking statements and progressive within the meaning of applicable laws and regulations. Actual results may vary from those expressed or implied, depending upon economic conditions, government policies and other incidental factors that may arise. Readers are cautioned not to place undue reliance on the forward looking statements.

1

Q4 and
FY 2014-15
Performance

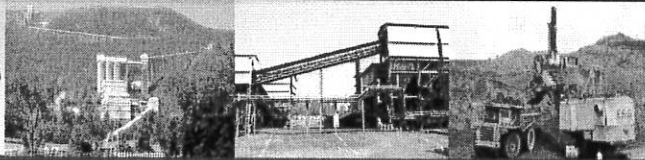


Performance Highlights of 12M (14-15) Vs 12M (13-14) – Physical & Financial Parameters

- Production increased to 304.41 LT from 300.25 LT (1%)
- Sales increased marginally to 305.16 LT from 305.00 LT
- Sales Turnover increased to Rs 12,356 crs from Rs 12,058 crs (2%)
- Avg. Sale Price increased to Rs 3,997/- from Rs 3,901/- per ton (3%)
- PBT increased to Rs 9,768 crs from Rs 9,759 crs
- PAT increased to Rs 6,422 crs from Rs 6,420 crs
- Total Dividend declared increased to 855% from 850%
- Capex increased to Rs 3,136 crs from Rs 2,518 crs

2

Q4 and
FY 2014-15
Performance



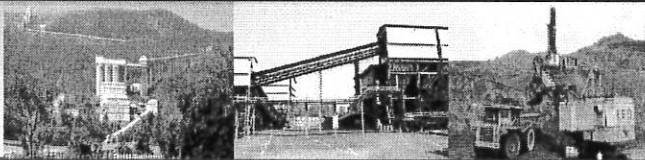
Performance Highlights of Q4 (14-15) Vs Q4 (13-14)

Physical & Financial Parameters

- Production decreased to 79.43 LT from 98.62 LT (-20%)
- Sales decreased to 76.90 LT from 94.00 LT (-19%)
- Sales Turnover decreased to Rs 2,829 crs from Rs 3,884 crs (-27%)
- Avg. Sale Price decreased to Rs 3,634/- from Rs 4,078/- per ton(-10%)
- PBT decreased to Rs 2,064 crs from Rs 2,998 crs.(-31%)
- PAT decreased to Rs 1,347 crs from Rs 1,962 crs.(-31%)

3

Q4 and
FY 2014-15
Performance



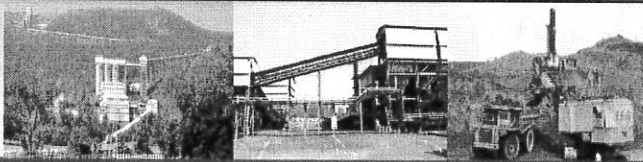
Performance Highlights of Q4 Vs Q3 (14-15)

Physical & Financial Parameters

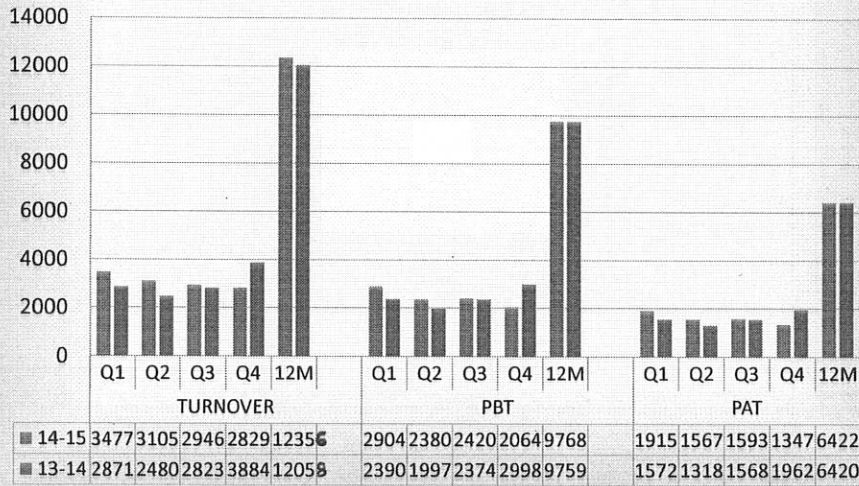
- Production decreased to 79.43 LT from 81.09 LT (-3%)
- Sales increased to 76.90 LT from 69.67 LT (10%)
- Sales Turnover decreased to Rs 2,829 crs from Rs 2,946 crs.(-4%)
- Avg. Sale Price decreased to Rs 3,634/- from Rs 4,170/- per ton(-12%)
- PBT decreased to Rs 2,064 crs from Rs 2,420 crs (-14%)
- PAT also decreased to Rs 1,347 crs from Rs 1,593 crs. (-15%)

4

Q4 and
FY 2014-15
Performance

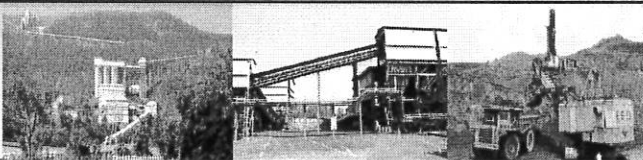


QUARTERLY FINANCIAL PERFORMANCE (Rs.in Cr)



5

Q4 and
FY 2014-15
Performance



PRODUCT WISE DETAILS

PRODUCTION (LWMT)	2013-14					2014-15				
	Q 1	Q 2	Q 3	Q 4	2013-14	Q 1	Q 2	Q 3	Q 4	2014-15
Lump	25.38	20.37	26.49	36.67	108.91	27.26	21.88	29.45	29.87	108.46
Fines	43.83	39.04	46.52	61.95	191.34	52.17	42.58	51.64	49.56	195.95
Total:	69.21	59.41	73.01	98.62	300.25	79.43	64.46	81.09	79.43	304.41
Lump : Fines Ratio	37:63	34:66	36:74	37:63	36:64	34:66	34:66	36:64	38:62	36:64

6

Q4 and
FY 2014-15
Performance

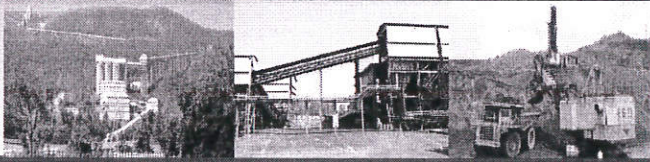


AVERAGE REALIZATION OF IRON ORE FOR LAST 3 FINANCIAL YEARS
(Rs/Ton) {inclusive of Royalty}

PRODUCT	2012-13	2013-14	2014-15			
			Q1	Q2	Q3	Q4
LUMP	5955	4942	5001	5102	5162	4913
FINES	3139	3311	3463	3731	3588	3480
TOTAL IRON ORE	4019	3901	4004	4209	4170	3997

7

Q4 and
FY 2014-15
Performance

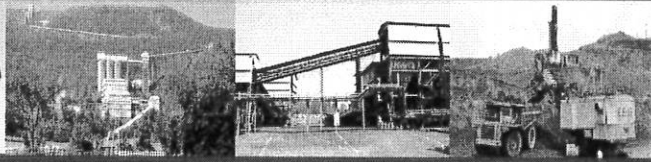


Details of Top 25 Shareholders
(As on 29.05.2015)

Sl. No.	Name of the Shareholder	No. of Shares	%
1	PRESIDENT OF INDIA	3171946300	80
2	LIFE INSURANCE CORPORATION OF INDIA	354710302	8.95
3	LIFE INSURANCE CORPORATION OF INDIA P & GS FUND	61980050	1.56
4	THE MASTER TRUST BANK OF JAPAN, LTD. AS TRUSTEE OF EASTSPRING I	36374752	0.92
5	MATTHEWS INDIA FUND	23423892	0.59
6	VANGUARD EMERGING MARKETS STOCK INDEX FUND, A SERIES OF VAN	14285431	0.36
7	INVESTEC GLOBAL STRATEGY FUND A/C ASIAN EQUITY FUND	12889962	0.33
8	ROBECO CAPITAL GROWTH FUNDS A/C ROBECO CAPITAL GROWTH FUN	11699324	0.3
9	STATE BANK OF INDIA	11421580	0.29
10	CANARA BANK-MUMBAI	10772388	0.27
11	WISDOMTREE INDIA INVESTMENT PORTFOLIO, INC.	8979286	0.23
12	THE NEW INDIA ASSURANCE COMPANY LIMITED	8316508	0.21
13	NATIONAL INSURANCE COMPANY LTD	6660721	0.17
14	UNITED INDIA INSURANCE COMPANY LIMITED	6566033	0.17
15	VANGUARD TOTAL INTERNATIONAL STOCK INDEX FUND	6180992	0.16
16	EASTSPRING INVESTMENTS INDIA EQUITY OPEN LIMITED	6115208	0.15
17	EDGBASTON ASIAN EQUITY TRUST	5541645	0.14
18	GOVERNMENT PENSION FUND GLOBAL	5502491	0.14
19	SPDR S AND P EMERGING MARKETS DIVIDEND ETF	5460338	0.14
20	GENERAL INSURANCE CORPORATION OF INDIA	5000000	0.13
21	THE ORIENTAL INSURANCE COMPANY LIMITED	4523019	0.11
22	ICICI PRUDENTIAL LIFE INSURANCE COMPANY LTD	4145730	0.1
23	INVESTEC GLOBAL STRATEGY FUND A/C INVESTEC GLOBAL STRATEGY FU	3688582	0.09
24	GMO EMERGING MARKETS FUND	3598365	0.09
25	POWERSHARES MAURITIUS	3516337	0.09
	TOTAL:	3793299236	95.69

8

Q4 and
FY 2014-15
Performance



THANK YOU