



SKMEGG/SEC/BSE/NSE/AGM/OC/2016-17

September 02, 2016

Bombay Stock Exchange Limited
Phiroze Jeejeebhoy Towers
Dalal Street
Mumbai-400 001

National Stock Exchange of India Limited
Exchange Plaza,
Plot No:C/G Block
Bandra Kurla Complex
Mumbai-400 051

Dear Sir,

Sub: Outcome of the proceedings of the 21st Annual General Meeting (AGM) of the Company held on 2nd September 2016

Ref: Scrip Code: 532143(BSE)/SKMEGGPROD (NSE)

.....

We would like to inform you that pursuant to Regulation 30 of SEBI (Listing Obligations and Disclosure Requirements) Regulations, 2015, the following resolutions, as set out in the notice convening the 21st Annual General Meeting of the Members of the Company were transacted at the Annual General Meeting held on 02nd September, 2016 at Registered office situated at 185, Chennimalai Road, Erode-638001 at 4.00 p.m.

Resolution No.1

Adoption of Financial Statement

- a. the audited financial statements including audited Balance sheet and profit and loss account of the Company for the financial year ended 31st March 2016, and the Reports of the Board of Directors and the Auditors thereon; and
- b. the audited consolidated financial statements including audited consolidated Balance sheet and Profit and Loss account of the Company for the financial year ended 31st March 2016 and the Report of the Auditors thereon;

Resolution No.2

To appoint a Director in place of Smt. S Kumutaavalli, Non-executive Director (DIN: 00002390), who retires by rotation, and being eligible, offers herself for re-appointment;

Resolution No.3

To appoint Statutory Auditors to hold office from the conclusion of this meeting until the conclusion of the next AGM and to fix their remuneration.

SKM EGG PRODUCTS

THINKING OUT OF THE SHELL

SKM EGG PRODUCTS EXPORT (INDIA) LIMITED CIN : L01222TZ1995PLC006025

Registered Office: 185, Chennimalai Road, Erode - 638 001, Tamil Nadu, India. Tel: +91 424 2262963, Fax: +91 424 2258419

Factory: Erode - Karur Main Road, Cholanganpalayam, Erode - 638 154, Tamil Nadu, India. Tel: +91 424 2351532 - 34, Fax: +91 424 2351531, Web: www.skmeegg.com





Resolution No.4

Re-appointment of Shri SKM Shree Shivkumar as the Managing Director of the company

Resolution No.5

Re-appointment of Shri SKM Maeilanandhan, as Executive Chairman of the Company

Resolution No.6

Approval for reclassification of promoters/promoters group as public holdings (Dr. M. Chandrasaker and Mrs. C. Shyamala Sharmili)

Resolution No.7

Approval of related party transactions.

The facility of voting on all the above resolutions was provided through remote e-voting(prior to AGM and physical ballots at the AGM venue)

The voting results on the above resolutions will be declared and communicated to the Exchanges subsequent to the receipt of Scrutinizers' Report. The same shall also be placed on the Company's website and also on the website of NSDL. The voting results as per Regulation 44 (3) of the SEBI (Listing Obligations and Disclosure Requirements) Regulations, 2015 shall be communicated in due course.

Moreover, please find enclosed herewith the presentation made at the Annual General Meeting of the company.

Kindly take on record the same in your records.

Thanking You

Yours faithfully
For SKM Egg Products Export (India) Limited

SKM Shree Shivkumar
Managing Director
(DIN:00002384)

Enclosure: As above

SKM EGG PRODUCTS

THINKING OUT OF THE SHELL

SKM EGG PRODUCTS EXPORT (INDIA) LIMITED CIN : L01222TZ1995PLC006025

Registered Office: 185, Chennimalai Road, Erode - 638 001, Tamil Nadu, India. Tel: +91 424 2262963, Fax: +91 424 2258419

Factory: Erode - Karur Main Road, Gholangapalayam, Erode - 638 154, Tamil Nadu, India. Tel: +91 424 2351532 - 34, Fax: +91 424 2351531, Web: www.skmeegg.com





SKMEGG PRODUCTS
THINKING OUT OF THE SHELL

Thinking Out

of the Shell



Operations Overview

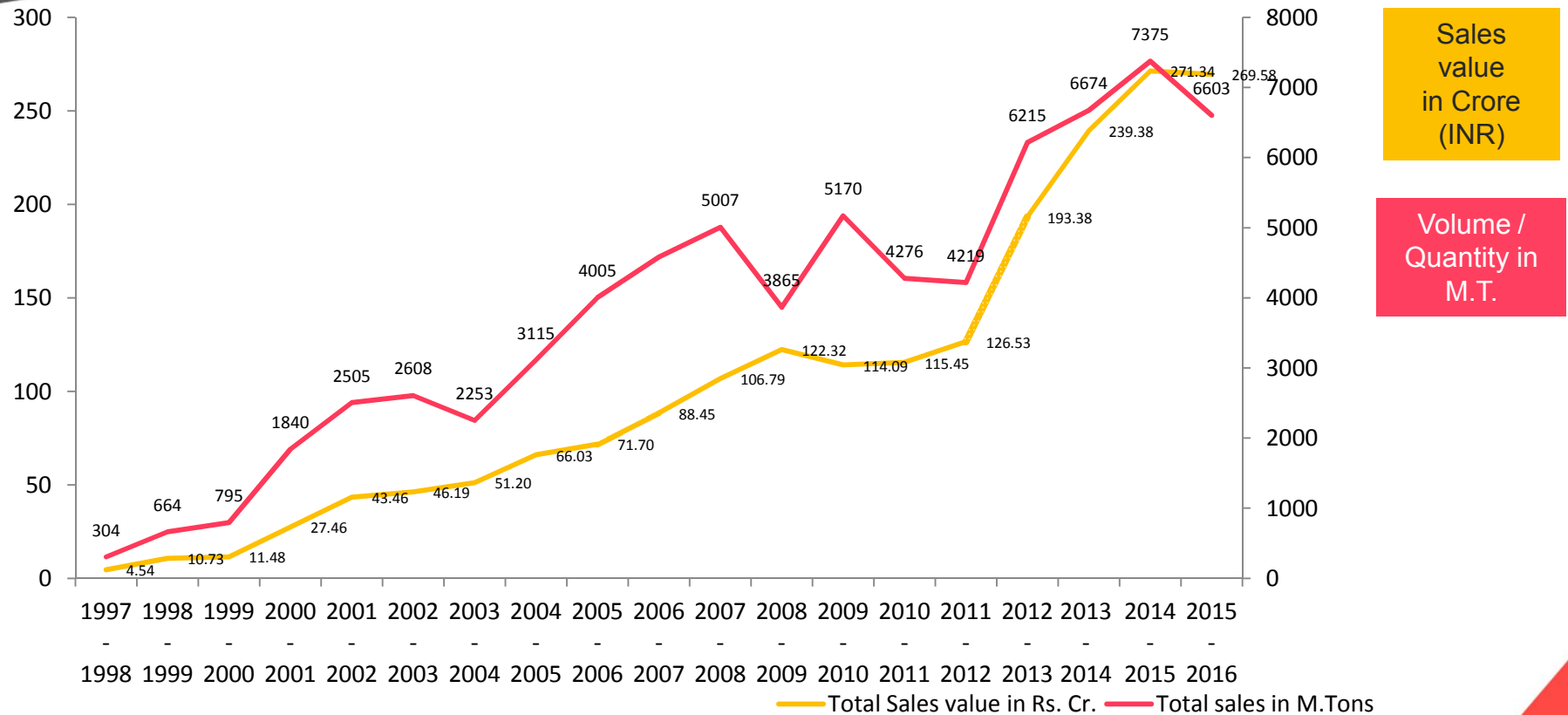
Presented by

Mr.SKM. Shree Shivkumar
Managing Director &
Chief Executive Officer





Sales-Volume & Value Since 1997



- SKM Egg Products is one of the largest egg processing company in Asia
- SKM Egg contributes more than 60% of total export of egg products from India.
- It has very good market share in Japan, South East and Far East Asian countries.
- In Japan, it enjoys more than 10% share in total import of egg powders in to Japan
- At an average it identifies minimum 2 new customers every year and expands its market
- In last two years, it has penetrated new markets and customers in Nigeria, Taiwan, Thailand, Indonesia and Malaysia
- We are a globally approved supplier for multinational companies like Mondelez, Heinz, CSM, etc.,

- SKM Egg Products is the only company in India to get approval for export to Russian Market after consistent efforts of more than 3 years and started exporting to this market from 2015 onwards.
- In 2016, it has placed strong foot in Russian Market with a red carpet welcome given for its products by the leading mayonnaise processors of Russia.
- The Egg Albumen powder market has dropped considerably , consequently there is a big drop in imports of this products by Japanese customers from Europe. SKM Egg Products is still maintaining its share by delivering quality products at a small premium over the market price.
- This is a clear indication of our reputation with Japanese customers and our position as a preferred supplier.

 **Production – 2015-16****Egg Powder**

Production 6,140.65 MT

Despatch

By Export 6,165.35 MT

By Domestic 43.16 MT

Egg Liquids

Production 394.92 MT

Despatch

By Export 189.42 MT

By Domestic 205.00 MT

Total Despatch

6,602.93 MTs



5S Roadmap Vision

- 5S Model Unit**
2017-18
- Sustenance Award**
2016-17
- 5S Certified Unit**
2015-16
- 5S Implementation**
2014-15

We want to bench mark our self as one of the most efficient egg processors

**PLATINUM AWARD BY ABK-AOTS @
Chennai on 10.01.2016**



**QUALITY CIRCLE GOLD AWARD @
Chennai on 23.07.2016**



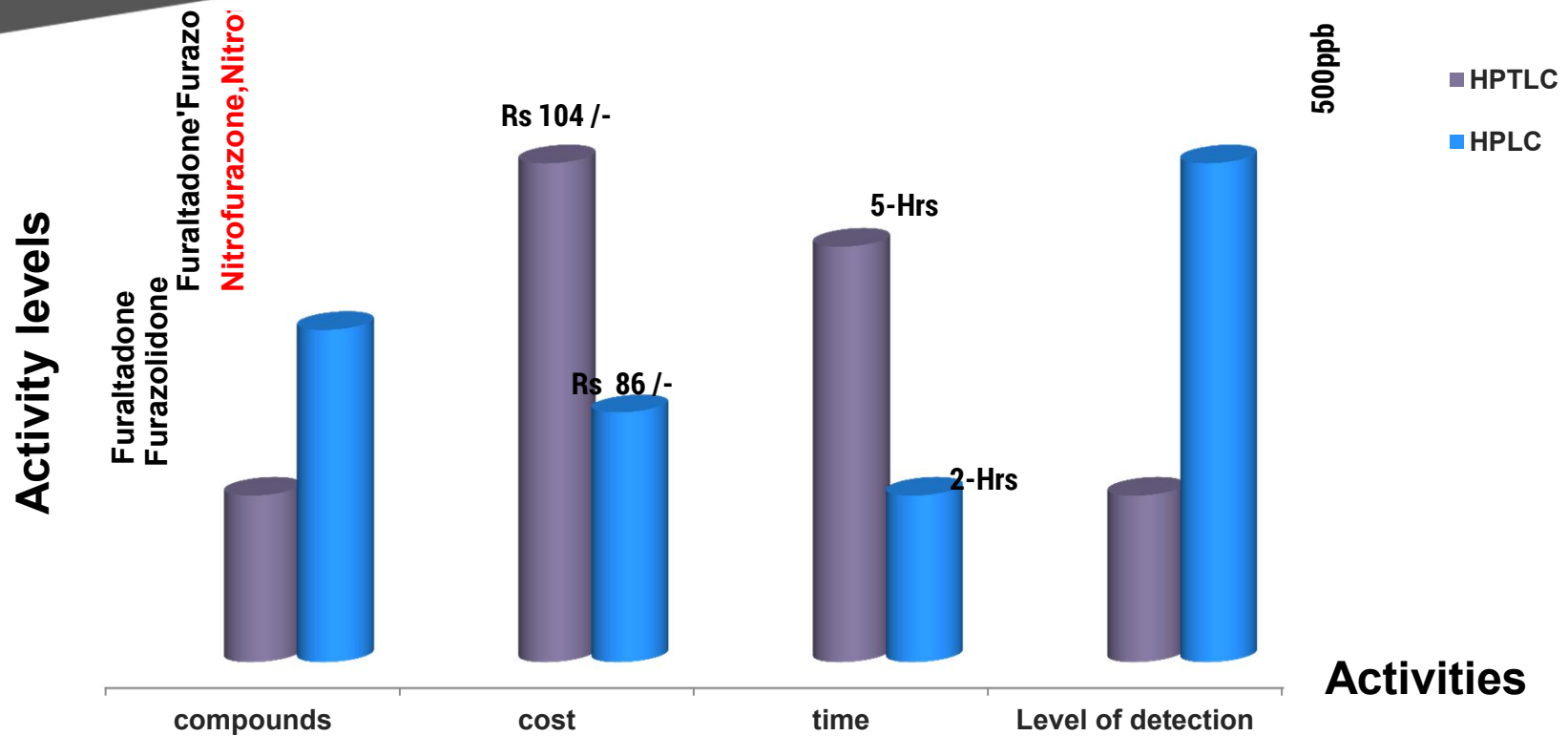
 **Cost Reduction Project**



Converted Wood Boiler to Coal Boiler for better Efficiency and Cost Saving



Quality upgradation project

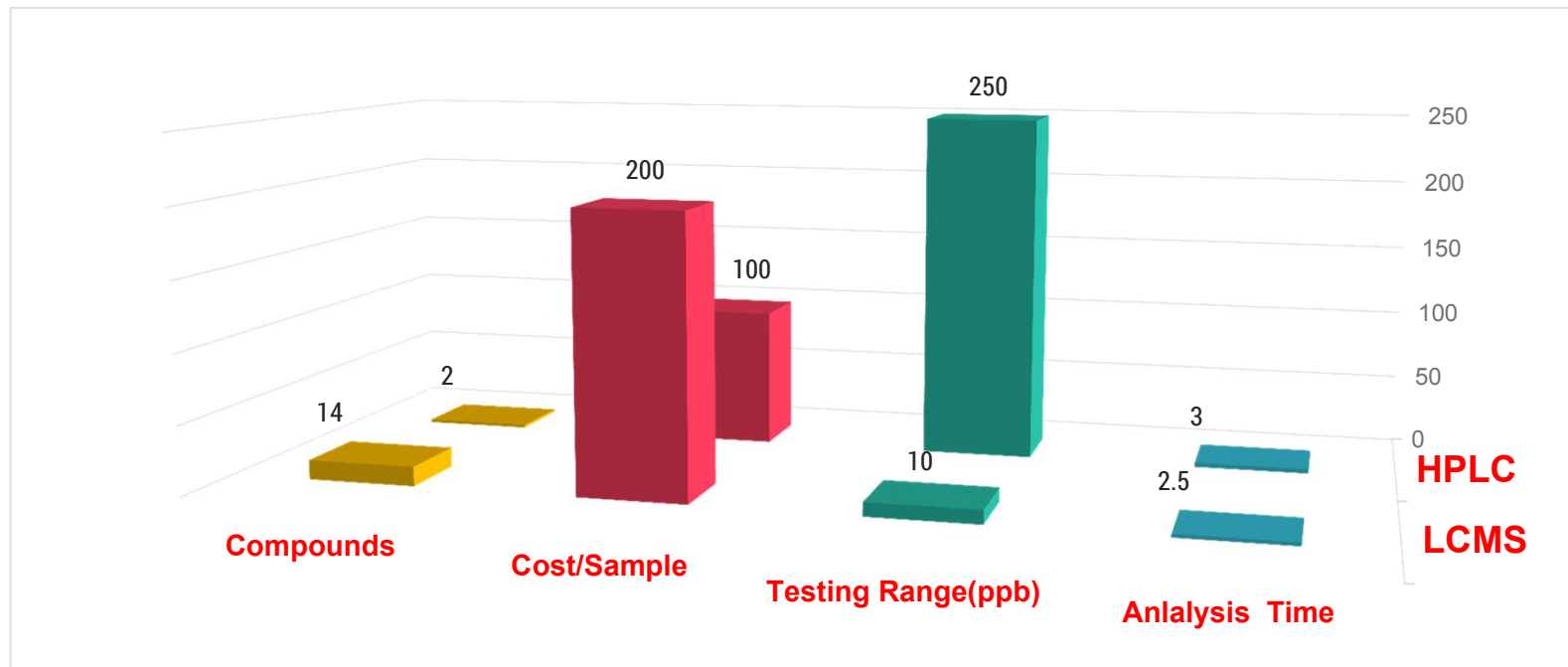


Nitrofurans Parameters Increased by HPLC with lower detection limits



Quality upgradation project

Quinolone groups wise residue by LCMSMS with lower detection for egg products



- Rating Agency M/s. Care Ratings has upgraded the rating of our company from 'BBB' – to 'BBB' category based on the performance of the company for the past years.
- Ours is a TERM LOAN DEBT FREE Company. We had closed all the term loans of our company before the due dates.
- The management has taken all the steps to get the listing from Bombay Stock Exchange (BSE).
- After this Annual General Meeting, listing will be considered by BSE.

- The company's shares are trading between Rs.60 - Rs.65 levels.
- The company has given dividend for the years 2014-15 and 2015-16 at the rate of 10%.
- The pledged promoter shares of 33,72,752 (nos) belonging to Managing Director has been released by State Bank of India and there is no lien on shares.

Employee's Welfare

SKM Shree Group Companies "KUDUMPATHIRUVIZHA"



THANK YOU !

Our Employees are our Biggest Asset

