

EW/Sec/2018/385

November 5, 2018

BSE Limited

P J Towers, Dalal Street,
Fort, Mumbai – 400 001.

Dear Sirs,

Ref.:- Scrip Code:- 532922

Sub: General Announcement - Update on Liquidity Management in USD

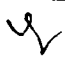
Enclosed is an Update on Liquidity Management in USD for your information and record.

Thanking you,

Yours faithfully,

For Edelweiss Financial Services Limited


B. Renganathan
Executive Vice President & Company Secretary


Encl: a/a



Update on Liquidity Management

Oct 01, 2018

Liquidity and Growth Outlook (1/2)



Liquidity

- Maintained a Liquidity Cushion of ~9-10% of balance sheet at all points of time
 - Current Liquidity Cushion at ~ \$ 750 Mn
- Medium and long term sources of funds are upwards of 68% of total balance sheet
- Adequate Liquidity Cushion currently positions us to meet all contractual liabilities over next 6 months even without roll-overs (slide 7)

Growth

- Short-term funding is seeing tightness, expected to improve in coming months
- Demand for credit is steady, however, growth may taper down by around 10 -12 percentage points for the market; NIMs likely to see an expansion
- In 2017, we communicated about Aspirations for 2020 in terms of asset quality, ROA and ROE. Based on current conditions, we do not see any reason to revise our Aspirations

Liquidity and Growth Outlook (2/2)



Profitability & Outlook

- Reduction in low-yielding High Quality Liquid Assets (HQLA) will have positive impact on RoA
- High RoA business is primarily long-term in nature and is expected to pick up in some time
- Our diversified model will help us navigate through the short-term challenges
 - 45% of the PAT contribution came from Distressed Assets, Wealth and Asset Management and Capital Markets business in FY18
- Tail-wind of ARC resolutions will help PAT growth
- We are currently not experiencing any deterioration in asset quality

Short-term assets are primarily low RoA in nature



Assets (\$ Mn)	Sep 27, 2018	Typical RoA range	Majorly funded by	Asset Behavioral Tenor		
				ST	MT	LT
Liquid Treasury Assets (A)	1,080	0.60% - 1.00%	CP & ST Debt	100%	0%	0%
Liquid Credit Book (LAS, Others) (B)	1,020	0.75% - 1.25%	CP	100%	0%	0%
High Quality Liquid Assets (A+B)	2,100					
Retail Mortgages	1,160	1.00% - 1.50%	Debt	15%	30%	55%
SME and Business Loans	570	1.50% - 2.00%	Debt	10%	50%	40%
Corporate Credit	1,320	1.75% - 2.25%	Debt and TL	20%	40%	40%
Wholesale Mortgage	1,590	2.50% - 3.00%	Debt and TL	20%	40%	40%
Distressed Credit	1,020	4.00% - 4.50%	Debt, TL & Equity	10%	30%	60%
Corporate Assets incl. Insurance	360	0%	Equity & Tier-2	0%	0%	100%
Total	8,120					

High Quality Liquid Assets constitute ~26% of Total Assets

Unaudited provisional numbers as on Sep 27, 2018 rounded off to nearest 10s

Liquid Treasury Assets include On Balance Sheet Liquidity Cushion

ST – Maturity less than one year, MT –Maturity between 1 and 3 years, LT – Maturity more than 3 years

Assets are funded by liabilities across tenors..



Assets (\$ Mn)	Sep 27, 2018	Funded by..					
		Repo	CP	Debt	Bank CC	TL	Tier 2 & Equity
Liquid Treasury Assets	1,080	70	400	360	30	150	70
Liquid Credit Book (LAS, Others)	1,020		870	40			110
Retail Mortgages	1,160			750	100	170	150
SME and Business Loans	570			340	40	100	80
Corporate Credit	1,320			440	80	540	260
Wholesale Mortgage	1,590			460	110	720	300
Distressed Credit	1,020			280	70	410	260
Corporate Assets & Insurance Equity	360			140			220
Total	8,120	70	1,270	2,810	430	2,090	1,450

Short-term money largely funds liquid treasury assets and liquid credit book

Unaudited provisional numbers as on Sep 27, 2018 rounded off to nearest 10s

Liquid Treasury Assets include On Balance Sheet Liquidity Cushion

.. With assets in each tenor range adequately covering the liabilities



(\$ Mn)	Assets	Liabilities	Gap
Short-Term	3,010	2,590	420
Medium-Term	2,100	1,770	330
Long-Term	2,650	2,280	370

Unaudited provisional numbers as on Sep 27, 2018, rounded off to nearest 10s

Above table does not include Corporate and Insurance on the assets side and Tier-2 capital and Net worth on the liabilities side

Short Term Liabilities include Repo, CPs, Bank CC lines and ST debt with residual tenor less than one year

Medium Term Liabilities include Debt with residual tenor between one to three years

Long Term Liabilities includes all other Debt

Estimated Liquidity Cushion till March 2019

Particulars (\$ Mn)	Oct-18	Nov-18	Dec-18	Jan-19	Feb-19	Mar-19
Opening Liquidity Cushion (A)	750	1,000	1,100	1,120	1,090	1,090
A) Inflows:						
1. Reduction in High Quality Liquid Assets	630	510	80	-	-	-
2. Asset EMI and Repayments	150	120	230	100	100	280
Total Inflows (B)	780	630	310	100	100	280
B) Outflows :						
1. Total Borrowings Repayments	(470)	(520)	(260)	(100)	(70)	(300)
2. Expenses & Other Payment	(60)	(10)	(30)	(30)	(30)	(30)
Total Outflows (C)	(530)	(530)	(290)	(130)	(100)	(330)
Closing Liquidity Cushion (A+B-C)	1,000	1,100	1,120	1,090	1,090	1,040

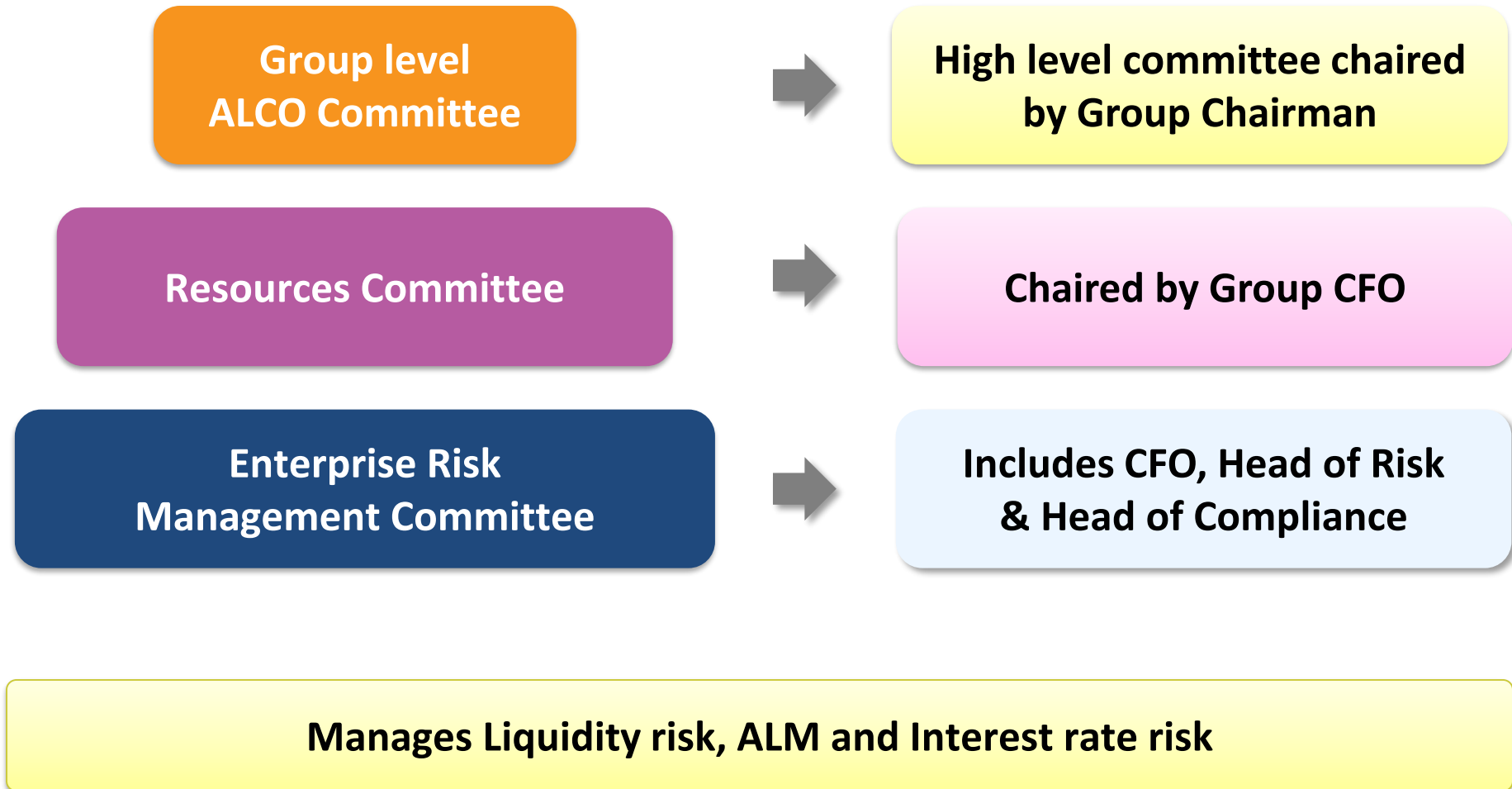
Even without fresh borrowings, existing cash flows will ensure adequate liquidity

Liquidity Cushion as on Sep 27, 2018 was ~\$660 Mn

Liquidity Cushion includes committed but undrawn banking sanction lines

Numbers are rounded off to nearest 10s

Asset Liability Management – Governance Structure



Safe Harbour



DISCLAIMERS:

This presentation and the discussion may contain certain words or phrases that are forward - looking statements, which are tentative, based on current expectations of the management of Edelweiss Financial Services Ltd. or any of its subsidiaries and associate companies (“Edelweiss”). Actual results may vary from the forward-looking statements contained in this presentations due to various risks and uncertainties. These risks and uncertainties include the effect of economic and political conditions in India and outside India, volatility in interest rates and in the securities market, new regulations and Government policies that may impact the businesses of Edelweiss as well as the ability to implement its strategy. The information and numbers contained herein are as of the date referenced and subject to change. Edelweiss does not undertake any obligation to update the same. Edelweiss has obtained all market data and other information from sources believed to be reliable or from its internal estimates unless otherwise stated, although its accuracy or completeness can not be guaranteed. The numbers have also been rounded off in the interest of easier understanding. Numbers have been re-casted, wherever required. Prior period figures have been regrouped/reclassified wherever necessary. All information in this presentation has been prepared solely by the company and has not been independently verified by anyone else.

This presentation is for information purposes only and does not constitute an offer or recommendation to buy or sell any securities of Edelweiss. This presentation also does not constitute an offer or recommendation to buy or sell any financial products offered by Edelweiss. Any action taken by you on the basis of the information contained herein is your responsibility alone and Edelweiss or its directors or employees will not be liable in any manner for the consequences of such action taken by you. Edelweiss and/or its directors and/or its employees may have interests or positions, financial or otherwise, in the securities mentioned in this presentation.

Edelweiss Financial Services Limited Corporate Identity Number: L99999MH1995PLC094641

For more information, please visit www.edelweissfin.com or drop us an e-mail on ir@edelweissfin.com.

Currency Conversion: Conversion rate of 1 USD equal to 72.47 INR has been used. Due to rounding off, numbers presented in this presentation may not add up to the totals provided and/or correlate with the growth and contribution percentages provided. Data provided in the INR version of the Presentation shall prevail in case of disparity.