

Ambuja Cement

ACL:SEC:

February 20, 2018

BSE Limited, Phiroz Jeejeebhoy Towers, Dalal Street, Mumbai – 400 023 Fax No. 22723719/22723121/22722037 / 22722039 / 22722041/ 22722061 corp.relations@bseindia.com	National Stock Exchange of India Ltd., Plot No.C/1 'G' Block Bandra – Kurla Complex Bandra East, Mumbai 400 051 Fax No.26598237 / 38 cmlist@nse.co.in
Deutsche Bank Trust Company Americas Winchester House 1 Great Winchester Street London EC2N 2DB, Fax No.+44207547 6073 <a href="mailto:Ctas Documents <ctas.documents@db.com">Ctas Documents <ctas.documents@db.com	Societe de la Bourse de Luxembourg, Avenue de la Porte Neuve L-2011 Luxembourg, B.P 165 FAX NO.00352 473298 "Luxembourg Stock Ex-Group ID " <a href="mailto:<ost@bourse.lu">ost@bourse.lu

Dear Sir,

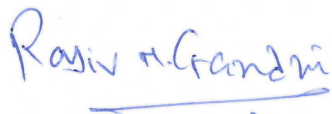
Sub: Investor Presentation on the Financial Results for the year ended December 31, 2017

Pursuant to Regulation 30 of SEBI (Listing Obligations and Disclosure Requirements) Regulations 2015, please find enclosed the Investor presentation on financial results for the year ended December 31, 2017.

Kindly take the same on record.

Thanking you,

Yours faithfully,
For Ambuja Cements Limited



Rajiv Gandhi
Company Secretary
Membership No. A11263

AMBUJA CEMENTS LIMITED

Elegant Business Park, MIDC Cross Road 'B', Off Andheri Kurla Road, Andheri (E), Mumbai 400059.
Tel.: 022- 4066 7000 / 6616 7000, Fax: 022 - 6616 7711 / 4066 7711. Website: www.ambujacement.com
Regd. Off. : P. O. Ambujanagar, Taluka - Kodinar, Dist. Gir Somnath, Gujarat.
CIN: L26942GJ1981PLC004717

**Ambuja
Cement**

Jahan pyaar ki dor se bandhthe hai चलो #ChhatPeMilteHain

**Ambuja PLUS
ROOF SPECIAL**

The "Chhat." A place without walls. Where houses became homes, neighbourhoods became communities.

Investor Presentation

20th February, 2018

1 CAN.

Disclaimer / Safe Harbour

Cautionary statement regarding forward-looking statements

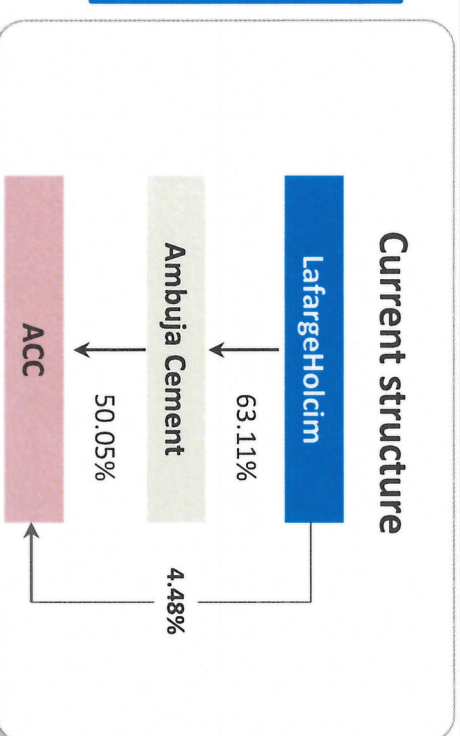
This presentation may contain certain forward-looking statements relating to Ambuja Cements Ltd. (“**Ambuja**”, or “**Company**”) and its future business, development and economic performance. These statements include descriptions regarding the intent, belief or current expectations of the Company, its subsidiaries and associates and their respective directors and officers with respect to the results of operations and financial condition of the Company, subsidiary or associate, as the case may be. Such forward-looking statements are not guarantees of future performance and are subject to known and unknown risks, uncertainties and assumptions that are difficult to predict. These risks and uncertainties include, but are not limited to (1) competitive pressures; (2) legislative and regulatory developments; (3) global, macroeconomic and political trends; (4) fluctuations in currency exchange rates and general financial market conditions; (5) delay or inability in obtaining approvals from authorities; (6) technical developments; (7) litigation; (8) adverse publicity and news coverage, which could cause actual development and results to differ materially from the statements made in this presentation. Company assumes no obligation to update or alter forward-looking statements whether as a result of new information, future events or otherwise. Any forward-looking statements and projections made by third parties included in this presentation are not adopted by the Company and the Company is not responsible for such third party statements and projections.

This presentation has been prepared by the Company based on information and data which the Company considers reliable, but the Company makes no representation or warranty, express or implied, whatsoever, and no reliance shall be placed on, the truth, accuracy, completeness, fairness and reasonableness of the contents of this presentation. This presentation may not be all inclusive and may not contain all of the information that you may consider material. Any liability in respect of the contents of, or any omission from, this presentation is expressly excluded.

This presentation and its contents are confidential and should not be distributed, published or reproduced, in whole or in part, or disclosed by recipients directly or indirectly to any other person.

Ambuja Cement (ACL): Leading cement company in India

- Pan India footprint with consolidated cement capacity of 63 mn tonnes.
- Attractive geographical positioning.
- Market leading brands with large network of dealers/retailers (trade sales >80% of total volume).
- Strong balance sheet with consolidated net cash of Rs. 59 bn.



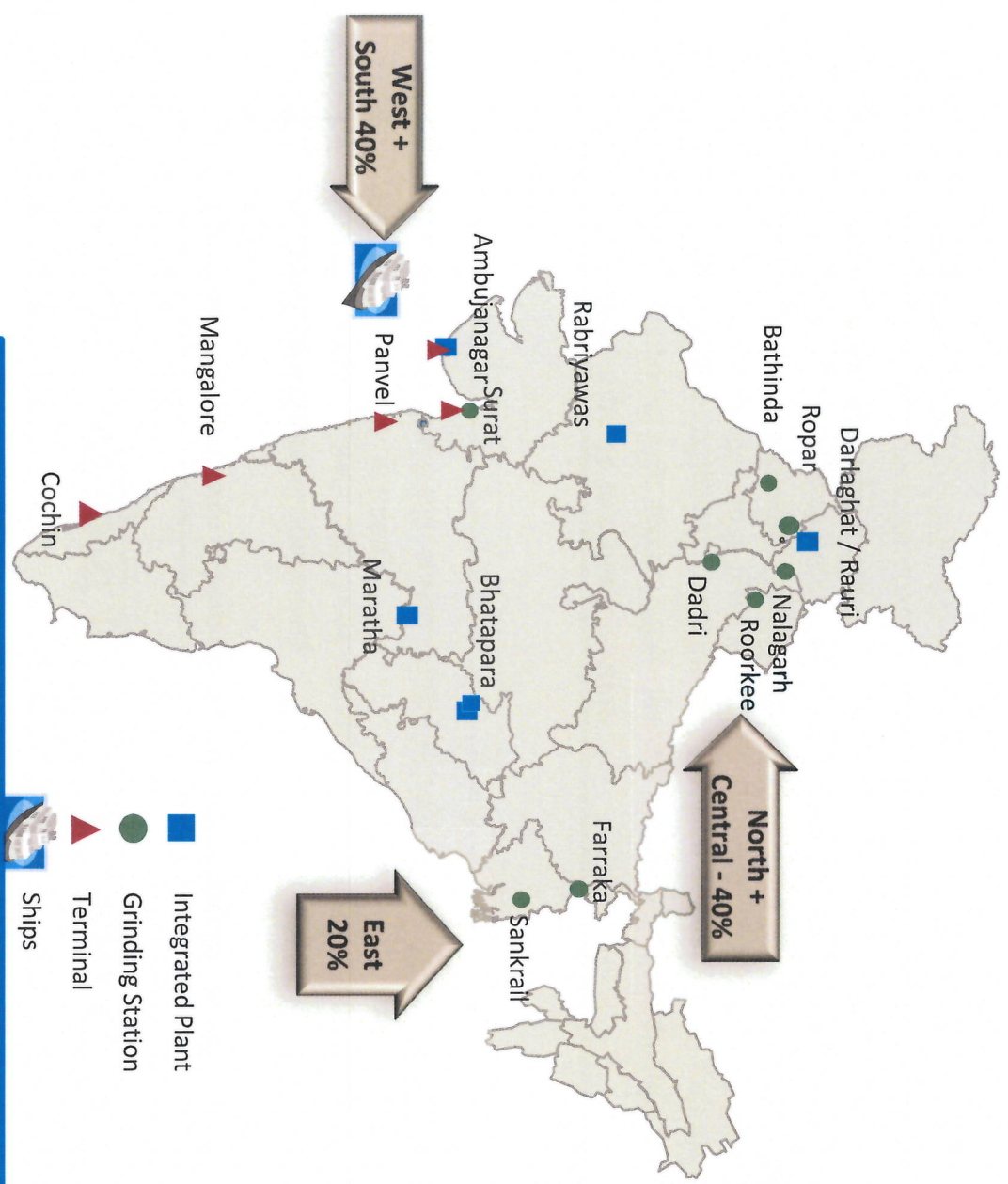
ACL - Strategies in place to enhance value

- CY17 capacity utilization of 78% - leaving scope for volume growth.
- The company proposes to set up a 3.1 Million Tonnes (9500 tpd) clinkerisation plant at Marwar Mundwa in Rajasthan. The Board of Directors have approved an initial investment of Rs.1,391 Crore towards the first phase of 1.7 Million Tonnes (5000 tpd) capacity which is expected to be commissioned in the second half of 2020.
- Commercial transformation: New and innovative premium product launches, focus on customer excellence and on margin management levers.
- To continue to optimize cost structure: Optimisation of fuel including alternative fuel journey, reduction in lead distance and savings in fixed overheads.

Ambuja Cements Ltd. is one of the leading cement companies in India. It is part of the LafargeHolcim Group, the world leader in the building materials industry, with a presence in 80 countries, and a focus on cement, aggregate and concrete since 2006. For three decades, Ambuja Cements has provided hassle-free home building solutions with its unique sustainable development projects and environment-friendly practices.

1 CAN.

ACL – Standalone Asset Footprint



Physical infrastructure	
Integrated Plants	5
Kilns	9
Clinkerisation Capacity (MTPA)	17.7
Grinding Units	8
Bulk Cement Terminals	3
Loading Port	1
Cement Grinding Capacity (MTPA)	29.7
Ships	10

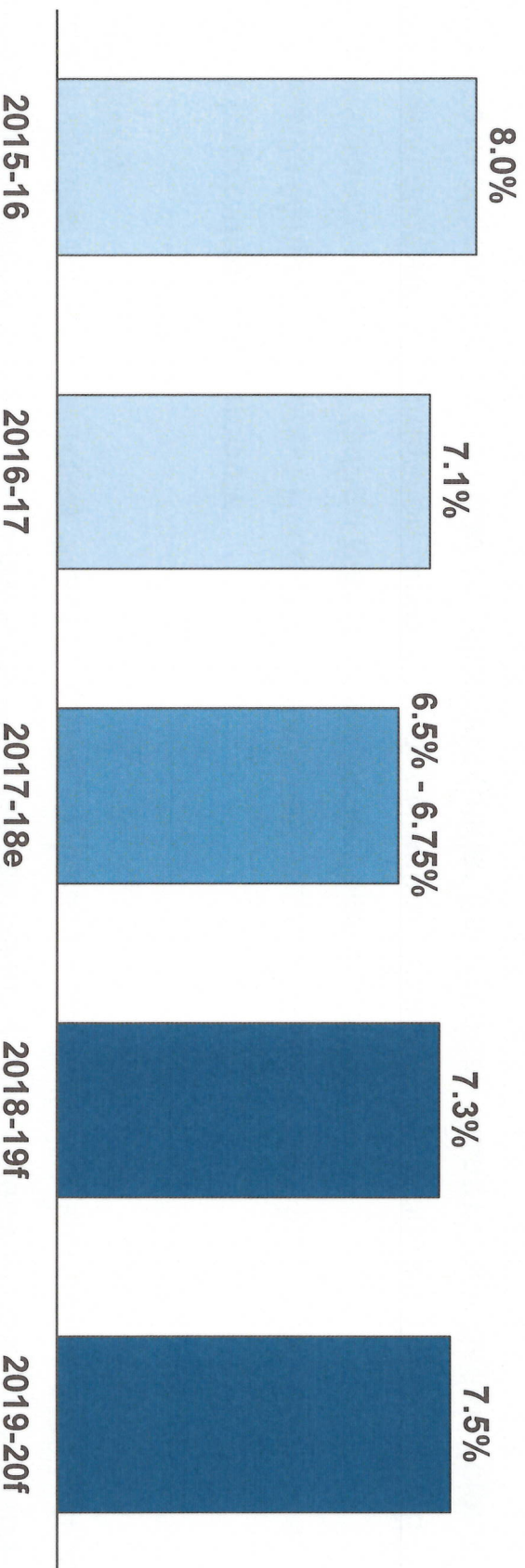
With a strong footprint in the North, West and East parts of India, and a presence in the South Ambuja Cement covers key locations in each region

1 CAN.

Indian economy projected to grow fastest in 2018 & 2019

■ GDP Growth %

(Base: 2011-12)



- Indian economy has strong growth fundamentals and is expected to grow in the range of 7.3%-7.5% over the next two years. *Source – World Bank Global Economic Prospects Report*
- GST implementation is stabilising, augurs well for the economy.
- Signs of revival in investment activity as reflected in improving credit offtake, large resource mobilisation from the primary capital market, and improving capital goods production and imports.
- The process of recapitalisation of public sector banks has commenced.
- Export growth is expected to improve further on account of improving global demand.

2018 Potential drivers for cement demand

Recent budget announcements to support cement demand growth in the near to long term

Infrastructure and Housing

- Affordable housing fund to be set up under the National Housing Bank.
- Increased allocation of Rs. 31,500 crore for the Pradhan Mantri Awas Yojana - Urban (PMAY-U).
- Outlays for the Ministry of Road Transport and Highways and Railways increased 11% and 22%, respectively.

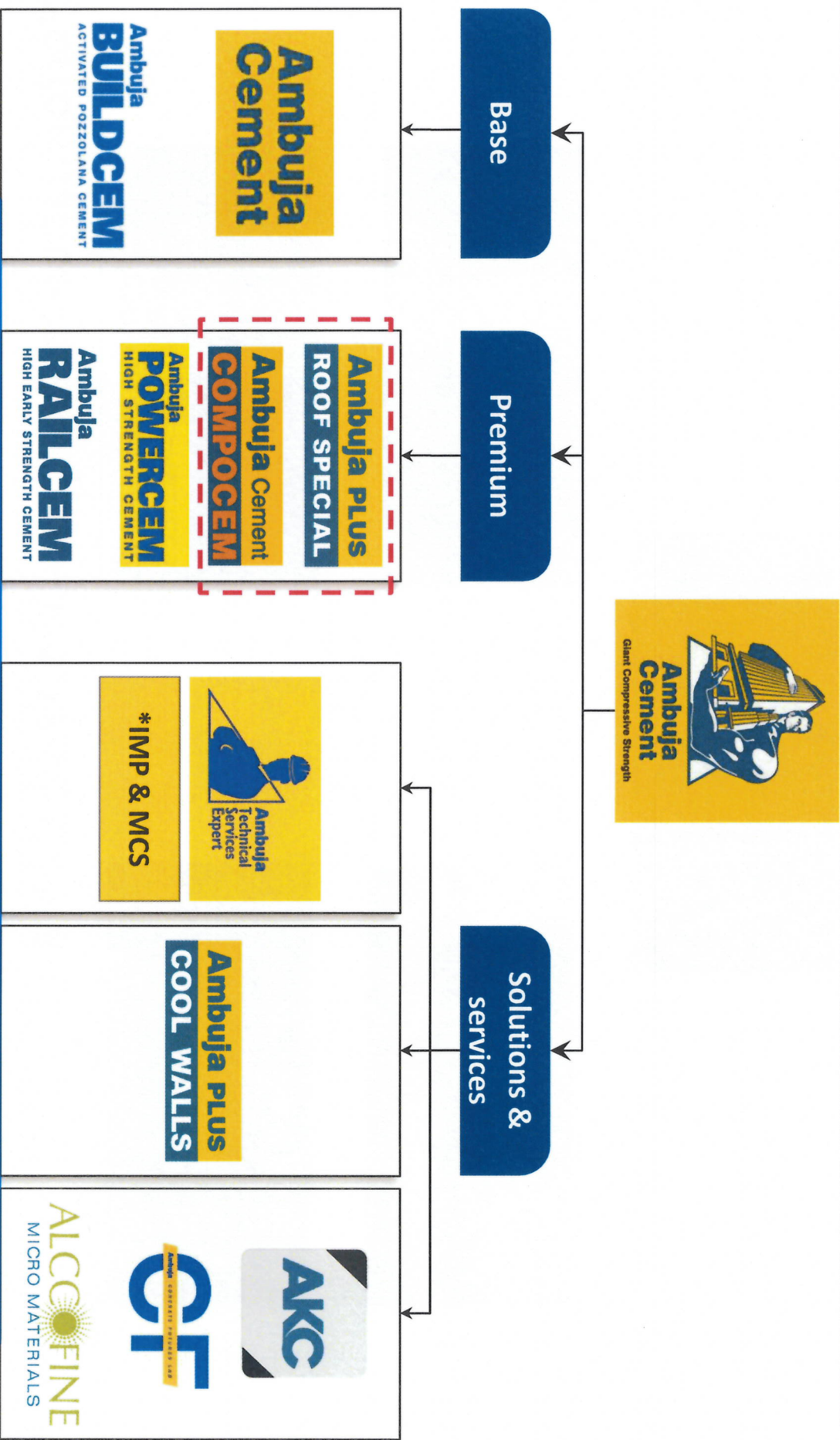
Focus on improving rural income

- Increase in Minimum Support Price (MSP) for kharif crops to be at least 1.5x of production cost.
- Crop Insurance scheme Pradhan Mantri Fasal Bima Yojana (PMFBY).
- Increase in allocation for irrigation projects under Pradhan Mantri Krishi Sinchayi Yojna (PMKSY).
- Increase in allocation for rural road construction (under the Pradhan Mantri Gram Sadak Yojana).

Cement demand to see a positive growth backed by infrastructure development, housing and increased rural spends

1 CAN.

Brand Architecture



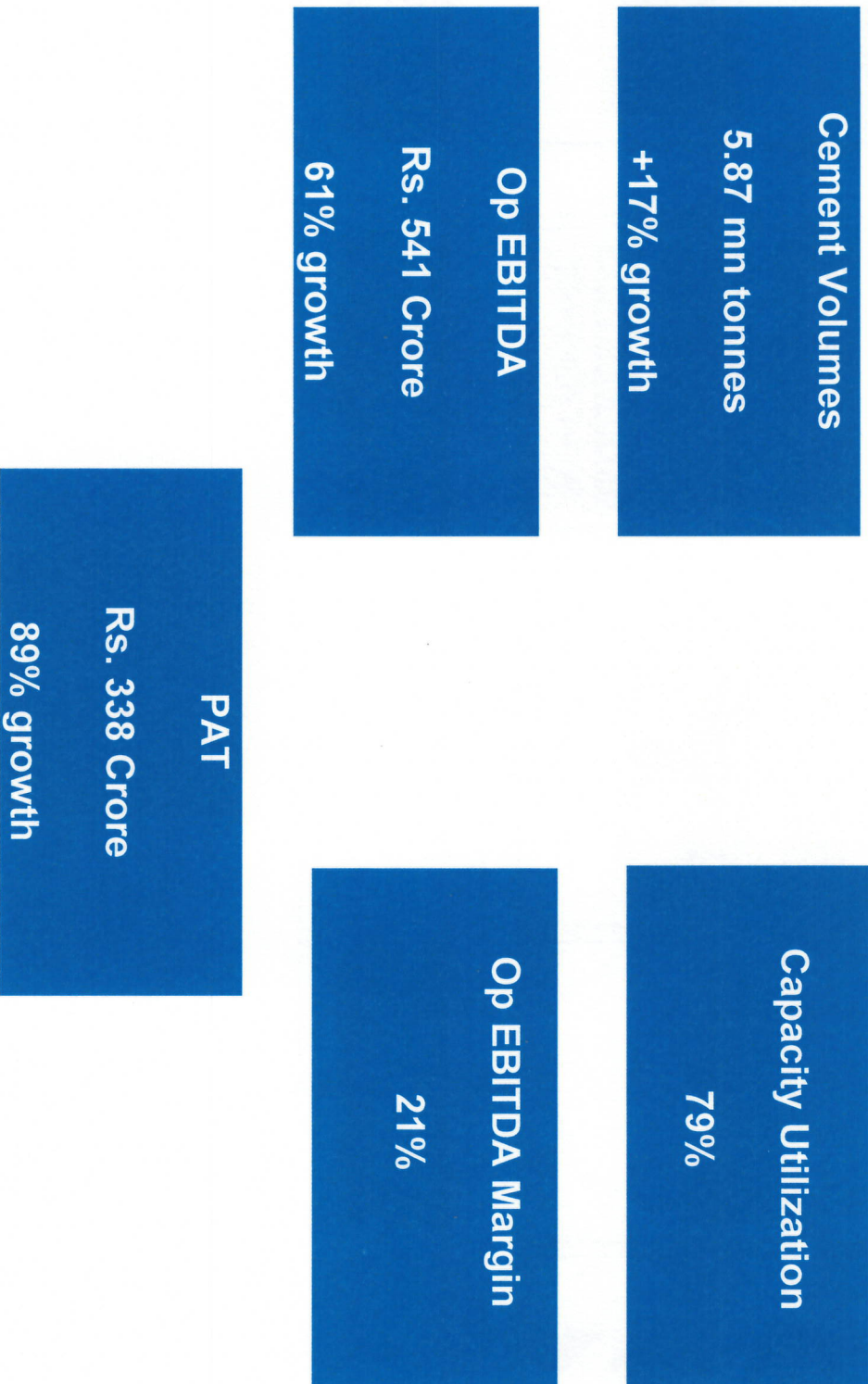
Share of Premium products expected to increase sharply

Ambuja Cement

*IMP – Instant Mix Proportion, MCS – Modular Curing Solution, AKC - Ambuja Knowledge Centre

1 CAN.

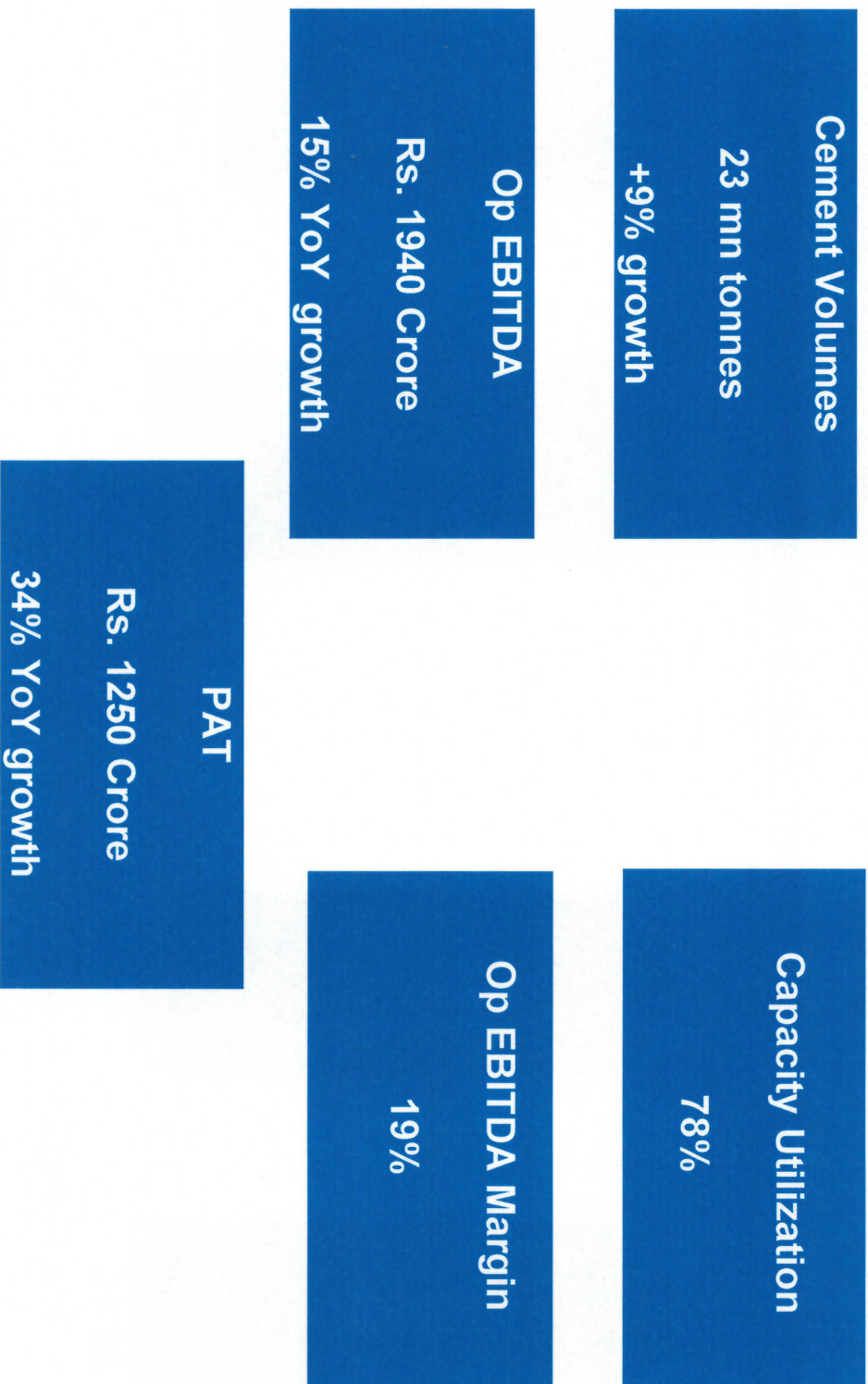
Performance Indicators – Q4'17 vs Q4'16



In Q4'17 cement sales were robust on improved demand

1 CAN.

Performance Indicators – CY 2017 vs CY 2016

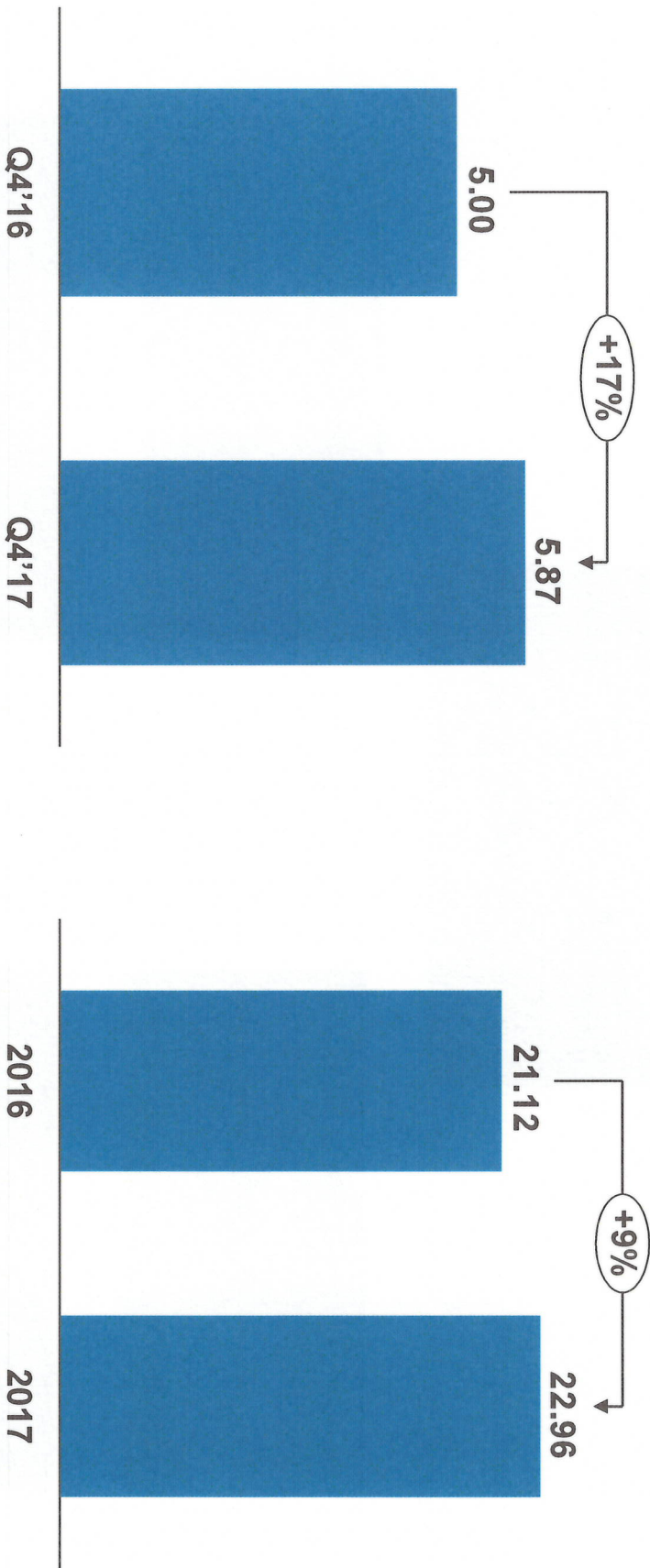


In CY 2017 cement sales grew by 9% due to improved demand

1 CAP.

Cement Sales Volumes

(Mn Tonnes)

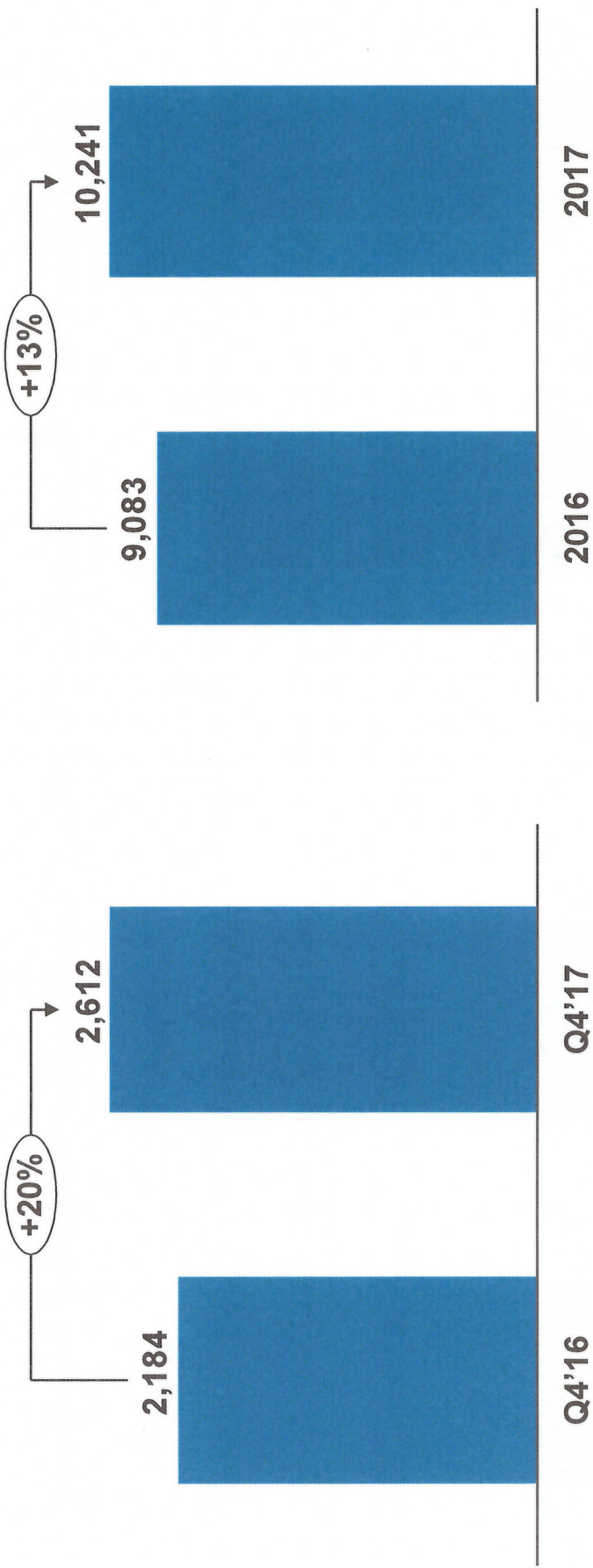


- Strong growth in Individual Housing Building (IHB) segment
- Increased participation in the Building and Infrastructure segment

1 CAN.

Net Sales

(Rs. Crore)

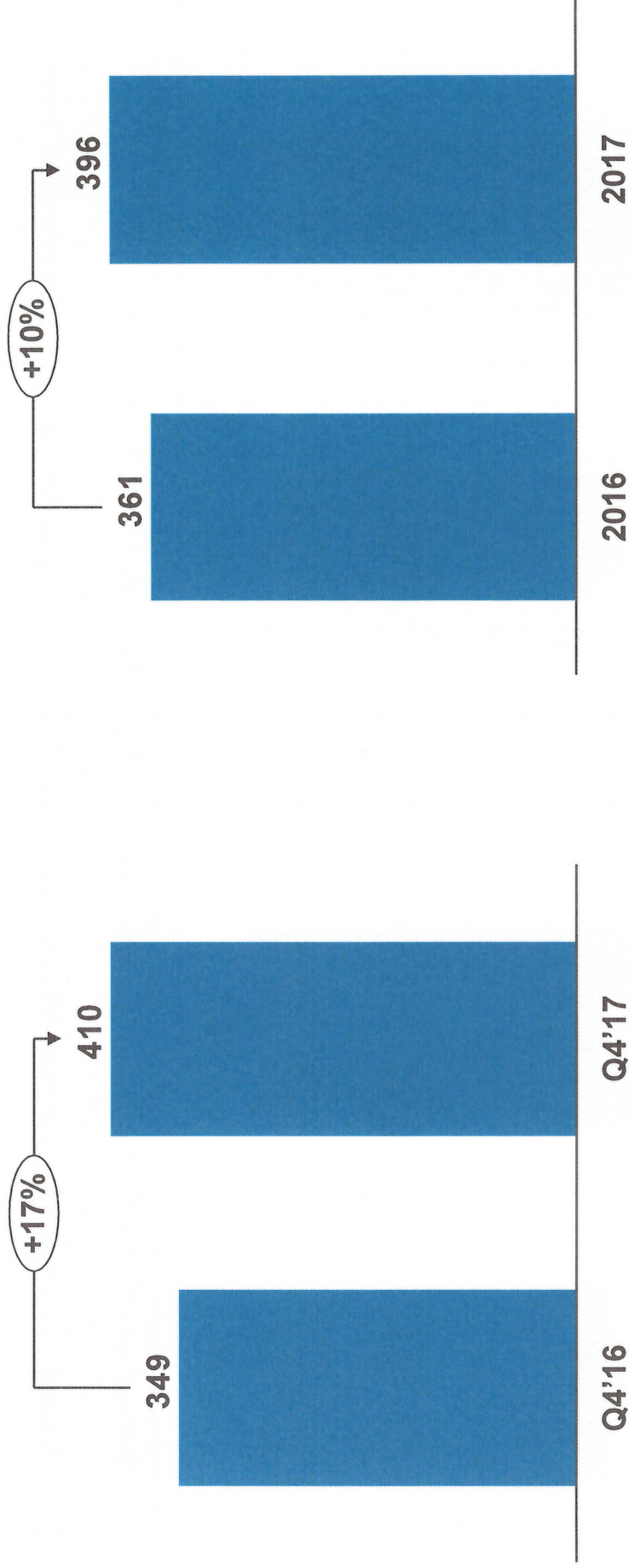


- Focus on Premium Products (Compozem and Roof Special)
- Ambuja's customer oriented initiatives are creating differentiation resulting in increased sales.
- Higher top line and mitigation measures helped overcome challenges and achieve strong results for the quarter and full year.

1 CAN.

Raw Material Cost

(Rs. / Tonne)

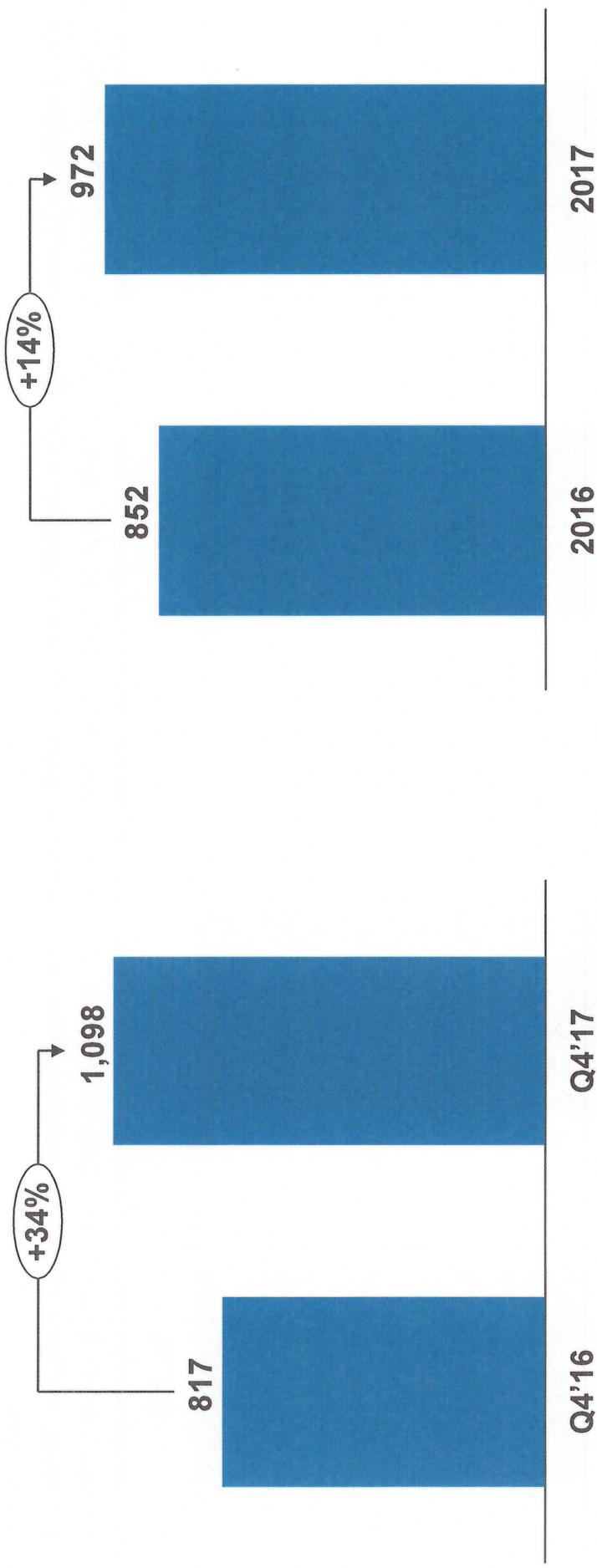


- ACL's raw material cost is higher on account of rising input costs such as fly ash and gypsum. However, the company adopted various initiatives such as optimisation of additives and correctives in Raw Mix.

1 CAN.

Power & Fuel Cost

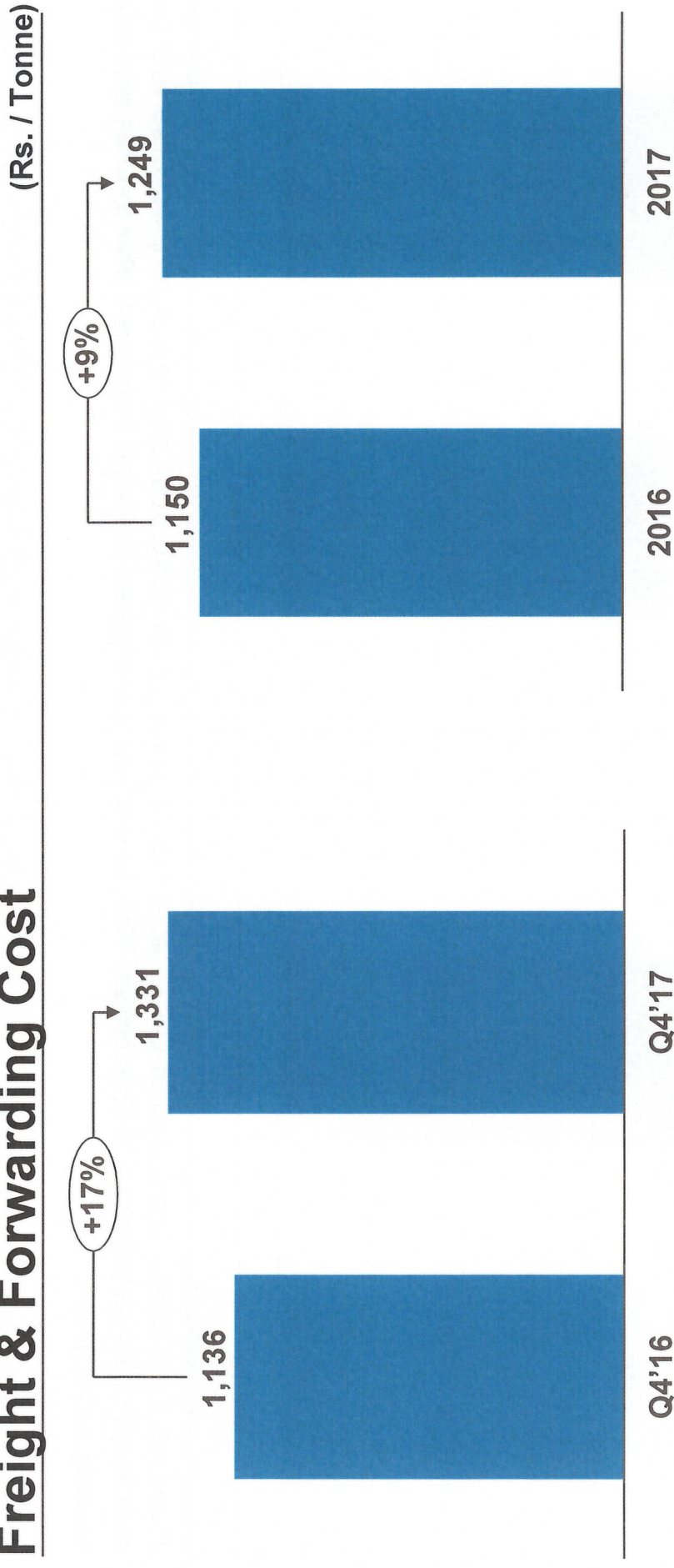
(Rs. / Tonne)



- Power & Fuel costs increased in Q4'17 as a result of rising petcoke cost and temporary adverse fuel mix due to the ban on petcoke in Rajasthan. This impact was mitigated through improved efficiencies and cost saving measures.
- ACL saw increase in its Power & Fuel cost as it produced highest clinker in Q4'17 to service the markets.
- On a full year basis Power & Fuel costs saw an increase of 14% due to increase in fuel price.

1 CAN.

Freight & Forwarding Cost

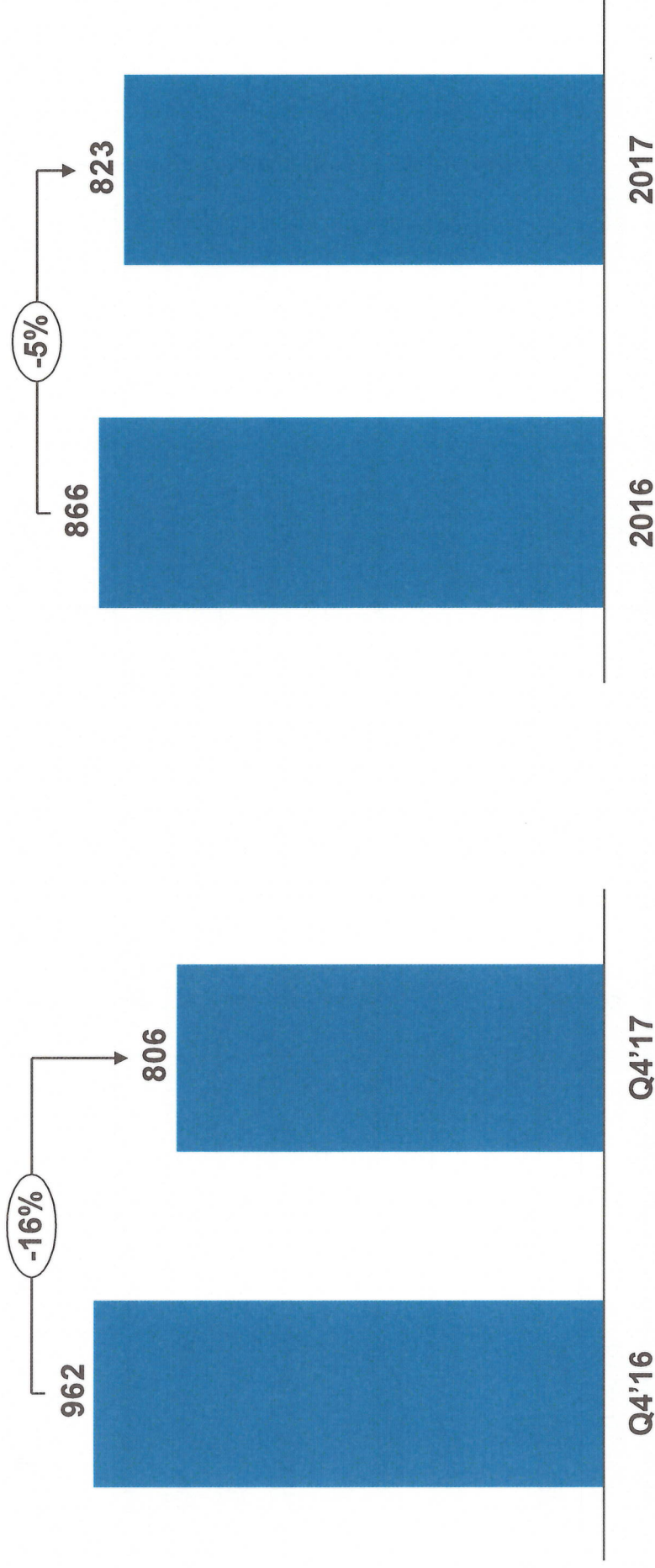


- Freight cost increased due to higher diesel prices, lead, inco-terms and rake unavailability, however, various initiatives were undertaken to optimize geo mix and mode mix. Road direct dispatch also improved.
- Long Term Traffic Contract (L TTC) signed with Railways for 3 years.

1 CAN.

Other Expenses Cost

(Rs. / Tonne)



■ ACL's other expenses fell in Q4'17 and full year basis, due to various fixed cost optimization measures.

1 CAN.

Ind AS Result – Standalone – ₹ crore

Particulars	UOM	Q4'16	Q4'17	+ / - PY	12M'16	12M'17	+ / - PY
Sales (net of excise duty)	₹ Cr	2,188	2,612	19%	9117	10,240	12%
Op. EBITDA	₹ Cr	335	541	62%	1,692	1,940	15%
Op. EBITDA margin	%	15.3%	20.7%	540 bps	18.6%	18.9%	30 bps
Depreciation	₹ Cr	156	143	-8%	849	573	-33%
Other Income	₹ Cr	41	48	17%	510	359	-30%
Finance Cost	₹ Cr	14	22	50%	74	107	44%
Profit Before Tax (PBT)	₹ Cr	205	424	106%	1,279	1,619	27%
Tax Expenses	₹ Cr	26	86	228%	347	370	6%
Profit After Tax (PAT)	₹ Cr	179	338	89%	932	1,250	34%
EPS	₹ / share	0.9	1.7	89%	4.7	6.3	34%

Adoption of Indian Accounting Standard (Ind AS) with effect from Jan1, 2017. The figures for the quarter & year ended December 31, 2016 have also been restated as per Ind AS

Ind AS Result – Consolidated – Rs. crore

Particulars	UOM	Q4'16	Q4'17	+ / - PY	12M'16	12M'17	+ / - PY
Sales (net of excise duty)	₹ Cr	4,827	6,021	25%	19,875	23,116	16%
Op. EBITDA	₹ Cr	625	986	58%	3,181	3,858	21%
Op. EBITDA margin	%	12.9%	16.4%	350 bps	16.0%	16.7%	70 bps
Depreciation	₹ Cr	325	302	-7%	1,461	1,219	-17%
Other Income	₹ Cr	71	94	33%	468	323	-31%
Finance Cost	₹ Cr	34	54	58%	153	206	35%
Share of profit in associates	₹ Cr	5	4	-25%	11	13	13%
Exceptional item	₹ Cr	39	0	-100%	39	0	-100%
Profit Before Tax (PBT)	₹ Cr	303	727	140%	2,008	2,768	38%
Tax Expenses	₹ Cr	33	249	658%	574	823	43%
Profit After Tax (PAT)	₹ Cr	270	479	77%	1,434	1,945	36%
Minority interest	₹ Cr	45	69	53%	329	429	31%
Net profit for the period	₹ Cr	225	409	82%	1,105	1,516	37%
EPS	₹ / share	1.1	2.1	82%	5.6	7.6	37%

Adoption of Indian Accounting Standard (Ind AS) with effect from Jan1, 2017. The figures for the quarter & nine months ended December 31, 2016 have also been restated as per Ind AS

1 CAN.

Ambuja - Financial Position – Standalone – ₹ in crore

Particulars	31.12.16	31.12.2017
Shareholders funds	19,357	19,973
Non Current Liabilities	564	527
Current Liabilities	3,432	4,117
Equity & Liabilities	23,353	24,617
Fixed Assets	6,262	6,119
Non Current Investments	11,845	11,845
Non Current Loan and advances	65	67
Other Non Current assets	968	1,094
Current Assets	4,213	5,492
Assets	23,353	24,617

Other key highlights



NCBM Awards

Ambuja Cement wins two prestigious awards at NCB International seminar. Submitted 22 technical Papers



ACF- Silver Jubilee

ACF Silver Jubilee year celebrated at mother plant Ambujanagar



CII Sustainability Awards

Ambuja bags six prestigious accolades @CII-ITC Sustainability Awards 2017



DJSI* Results 2017

ACL emerging among the top 10 companies in the Global Dow Jones Sustainability Index (DJSI) ranking 2017 in the Construction Material category and has been ranked at No.7 in the list



Health & Safety

Nalagarh plant achieved 'Zero Harm' journey with no injury in one-year Started Driver Management Center at All Ambuja Locations



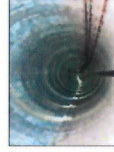
Top 40 Brands

Global consultancy firm, Interbrand India – division of communications giant Omnicom – lists Ambuja Cement in top 40 brands in recently published Interbrand Best Indian Brands 2017 report.



New Product & Solutions

'Ambuja Plus Cool Walls' launched in Punjab and Himachal Pradesh in addition to Gujarat and Maharashtra



Iconic Projects

Ambuja has supplied 100% high quality, strong and durable cement for South Asia's first underwater rail tunnel, linking Howrah and Kolkata



Logistics

Ambuja inks long Term Traffic Contract with Railway in East

1 CAN.

Sustainability a way of life

Ambuja Cement aspires to be the most competitive and sustainable company in the cement manufacturing industry. Acting in a sustainable manner is not only a business imperative but also provides the company with a competitive advantage



1 CAN.

END

