

**REGD. OFFICE:**

S5 Off 3rd Cross Peenya Industrial Area  
Peenya 1st Stage ,Bengaluru – 560 058.  
Tel: +91-80-22046969-78  
Fax : +91-80-22046980  
Web : [www.cerebracomputers.com](http://www.cerebracomputers.com)  
E-mail : [info@cerebracomputers.com](mailto:info@cerebracomputers.com)  
CIN: L85110KA1993PLC015091

REF: CITL/BSE/013/2018-19  
Tuesday, 24 July, 2018

Department of Corporate Services (Listing)  
BSE Limited (Bombay Stock Exchange Limited)  
P J Towers, Dalal Street, FORT  
MUMBAI - 400 001

Dear Sirs

**Sub: NSIC-CRISIL, Performance and Credit Rating**


We are pleased to inform that CRISIL has awarded 'CRISIL MSE 2' rating to Cerebra Integrated Technologies Limited (Cerebra) which indicates financial strength High, Operating performance High and also "High Credit worthiness in relation to other MSEs". Also note that last year, Cerebra was awarded as "CRISIL MSE 4" which was indicated as "above average financial strength".

We have also enclosed the copy of "NSIC-CRISIL, Performance and Credit Rating Certificate".

Kindly take the above on record and treat this as compliance with the listing Regulations.

Thanking you.

Yours sincerely  
For Cerebra Integrated Technologies Limited



Shridhar S Hegde  
Whole Time Director  
DIN: 01247342

## NSIC-CRISIL Performance and Credit Rating

**Cerebra Integrated Technologies Limited, Karnataka**  
has been awarded an NSIC-CRISIL Rating of



On July 17, 2018 and valid till July 16, 2019

The rating **MSE 2** indicates `High credit worthiness in relation to other MSEs`..

R. Vasudevan  
Business Head  
CRISIL SME Ratings





# Cerebra Integrated Technologies Limited

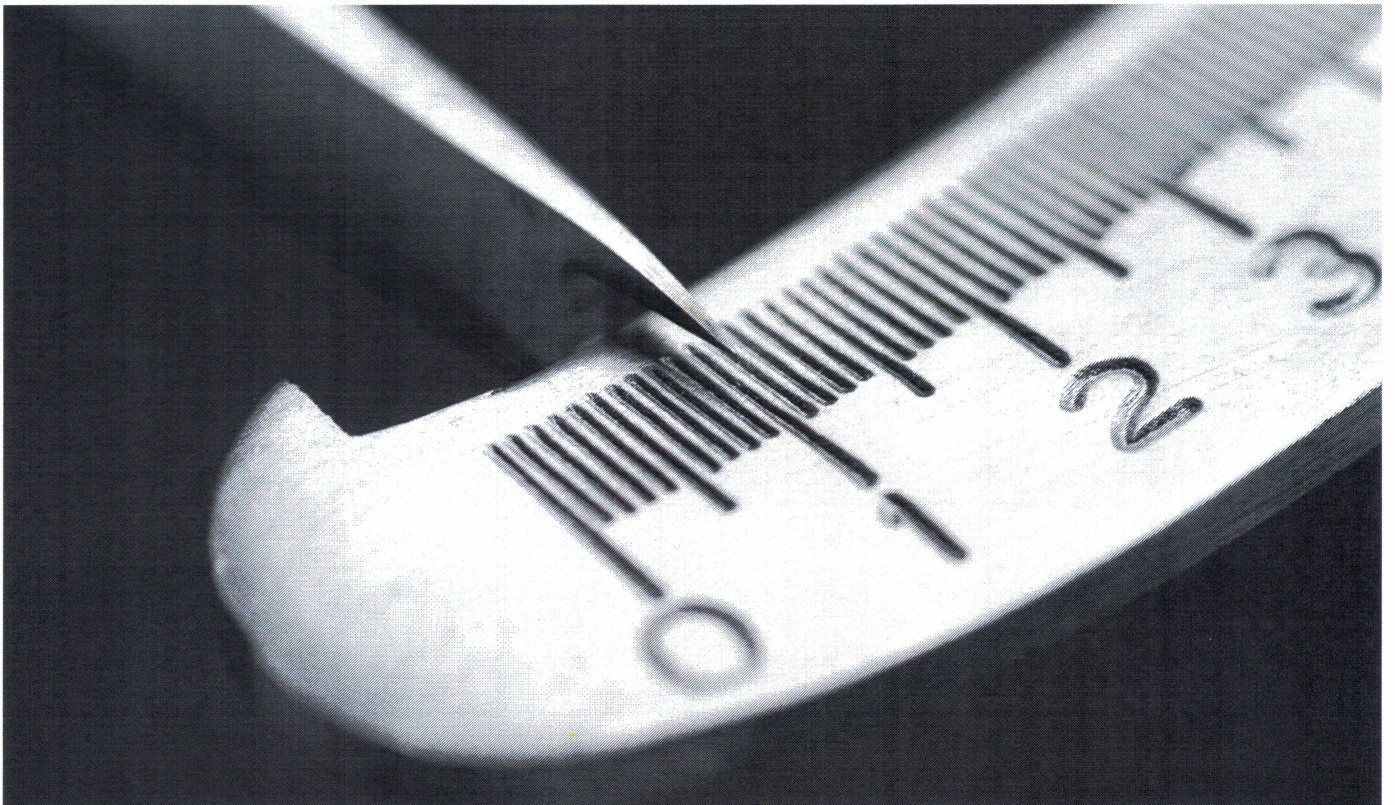
**NSIC-CRISIL Rating: CRISIL MSE 2**

Financial strength: High

Operating performance: High

Indicates 'High' creditworthiness in relation to other

Report Date: July 17, 2018 / Valid Till: July 16, 2019



## NSIC-CRISIL performance and credit rating

<b>CRISIL MSE 2</b> indicates 'High' credit worthiness adjudged in relation to other MSEs	CRISIL MSE Rating	Definition	Financial Strength	Operating Performance
	MSE 1	Highest	Highest	Highest
	<b>MSE 2</b>	<b>High</b>	<b>High</b>	<b>High</b>
	MSE 3	Good	Good	Average
	MSE 4	Above Average	Above Average	Weak
	MSE 5	Average	Average	Poor
	MSE 6	Below Average	Below Average	
	MSE 7	Weak	Weak	
	MSE 8	Poor	Poor	

## Rating history

Rating	Financial Strength	Operating Performance	Assigned on	Valid till	Rating acceptance	Type
CRISIL MSE 4	Above Average	High	July 31, 2017	July 05, 2018	Rating accepted	New